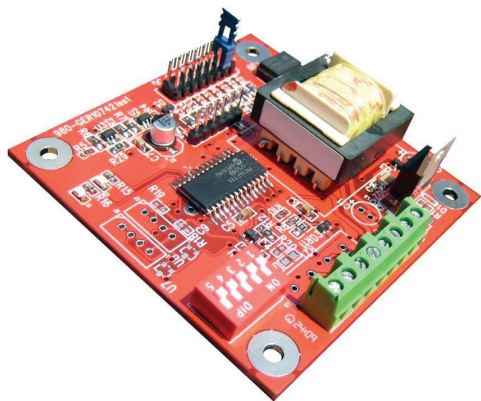


DC Temperature Controller



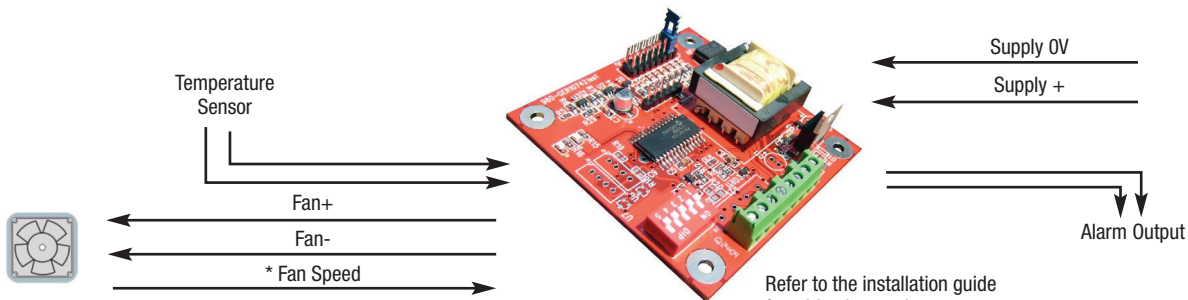
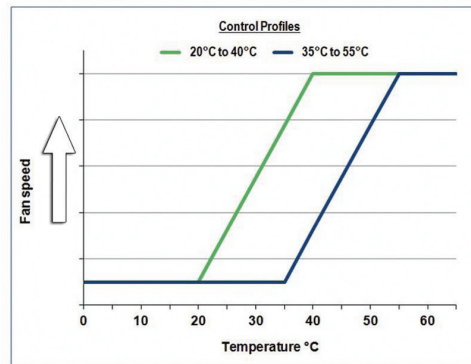
The DC temperature controller provides closed loop, temperature sensitive speed control for ebm-papst 2-wire and 3-wire DC fans. The controller regulates the electrical power supplied to the fan to maintain optimum performance and reliability.

The controller regulates fan speed between 0% and 100% against the selected temperature profile and also incorporates a combined fan fail, sensor fail and over-temperature alarm.

Note: Due to the variations in motor electronics, a small number of mainly high speed fans may not work correctly with this controller.

Part Number	Temperature Profile	Supply Voltage	Ambient temperature	Max Humidity	Alarm Output	Width	Length	Height
	°C	VDC	°C	% RH		mm	mm	mm
CDC122055UC-000	20-40 / 35-55	12	-20...+75	95	Open Collector	72.4	71.1	35
CDC122055UR-000	20-40 / 35-55	12	-20...+75	95	Relay	72.4	71.1	35
CDC242055UC-000	20-40 / 35-55	24	-20...+75	95	Open Collector	72.4	71.1	35
CDC242055UR-000	20-40 / 35-55	24	-20...+75	95	Relay	72.4	71.1	35
CDC482055UC-000	20-40 / 35-55	48	-20...+75	95	Open Collector	72.4	71.1	35
CDC482055UR-000	20-40 / 35-55	48	-20...+75	95	Relay	72.4	71.1	35

- DIP- switch selection for:
 - Temperature profile
 - Minimum fan speed
 - Soft start
- Alarm output
 - Fan failure*
 - Over-temperature
 - Sensor failure
- Supplied complete with 2m NTC temperature sensor
- Up to 17W total fan load



Refer to the installation guide for wiring instructions

*3-wire fans only

X-ON Electronics

Largest Supplier of Electrical and Electronic Components

Click to view similar products for [DC Fans](#) category:

Click to view products by [ebm papst](#) manufacturer:

Other Similar products are found below :

[614R](#) [6424/2HP-210](#) [8312R](#) [DV4118/2NP-183](#) [AFB0948HH-S687](#) [PFB0824DHE-8B72](#) [G2E085-AA05-10](#) [RD20S-4/210660](#) [4318/12T](#)
[4418HH](#) [AUB0912H-F00](#) [3412N/2ME](#) [K2E225-RA92-09](#) [4184N/2XR](#) [5214N2HH](#) [614J2HHPR-010](#) [8412NGL-12](#) [4114N/12HHR-297](#)
[4656](#) [ZWR-903](#) [4112N12GL-175](#) [KD2406PKB2.\(2\).GN](#) [AFB1248HHE](#) [AFB1212LE-F00](#) [FAN-SCH-1](#) [MF60151V1-1000U-G99](#)
[PF80252V1-1000U-G99](#) [PF92252V1-1000U-G99](#) [4112N/2H6P](#) [4114N/17-251](#) [6212NH](#) [622/2N](#) [712F-011](#) [8218J/2NP-181](#) [W1G180-AB47-](#)
[15](#) [FAA1-12038NBKW31-A](#) [6318N/2TDP](#) [6318N/2H3PU](#) [6318HU](#) [424JMU](#) [PMD1206PTVX-A.U.GN](#) [PF80251B2-000U-F99](#)
[EF40101BX-1000U-G99](#) [AD1224LB-A71GL](#) [9GA0924L4021](#) [9GA0924M4021](#) [9GA0924M4011](#) [9GA0824B20011](#) [9GA0812A2D0011](#)
[9GA0912M4D011](#) [9GA0924W4D01](#)