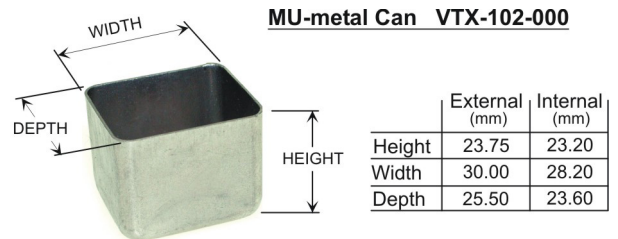
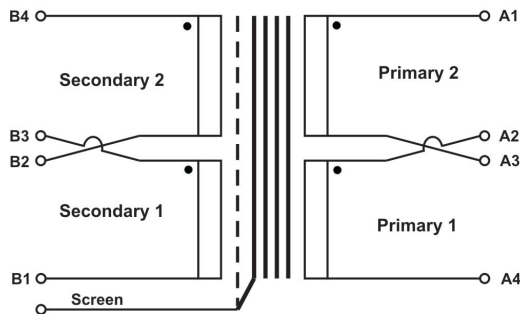
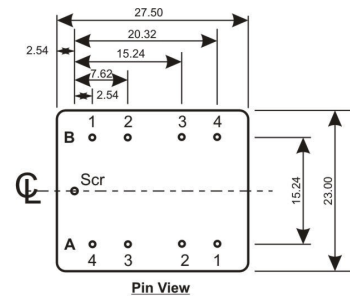
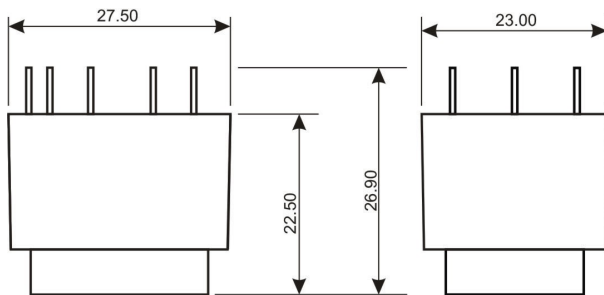
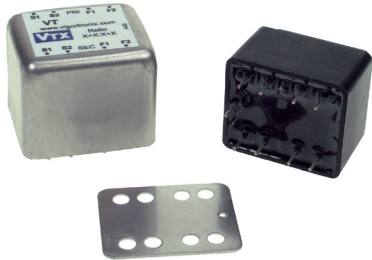




Features:

- High Quality Audio Transformers
- Encapsulated PCB mounting
- Optional MU-metal can with Lid to minimise external noise.
- Less than 1% T.H.D
- 30Hz ~ 35KHz Freq. Range
- RoHS Compliant



Part No	Ratio	Imp. Pri Z (Ω)	Imp. Sec Z (Ω)	Imp. Pri Series Z (Ω)	Imp. Sec Series Z (Ω)	Pri DCR Ω +/-10%	Sec DCR Ω +/-10%	Freq. Range	Isolation Voltage	
VTX-101-001	6.3+6.3 : 1+1	150 + 150	3.75 + 3.75	600	15	10 + 10	0.36+0.36	30~ 30KHz	1KVac	
VTX-101-002	1+1 : 2+2	150 + 150	600 + 600	600	2.4k	10 + 10	55 + 55	30~ 35KHz		
VTX-101-003	1+1 : 6.45+6.45	150 + 150	6.25k + 6.25k	600	25k	9.6 + 9.6	535+605	30~ 25KHz		
VTX-101-006	1+1 : 1+1	150 + 150	150 + 150	600	600	15 + 15	20 + 20	30~ 30KHz		
VTX-101-007	1+1 : 1+1	600 + 600	600 + 600	2.4k	2.4k	42 + 42	58 + 58	30~ 35KHz		
VTX-102-000	Mu-metal screening can + Lid									
VTX-102-001	VTX-101-001 fitted with VTX-102-000									
VTX-102-002	VTX-101-002 fitted with VTX-102-000									
VTX-102-003	VTX-101-003 fitted with VTX-102-000									
VTX-102-006	VTX-101-006 fitted with VTX-102-000									
VTX-102-007	VTX-101-007 fitted with VTX-102-000									

Products can be altered to suite custom requirements. Please contact Vigortronix for your specific requirements.
The information contained in this document is subject to change without notice.

X-ON Electronics

Largest Supplier of Electrical and Electronic Components

Click to view similar products for [vigortronix](#) manufacturer:

Other Similar products are found below :

[VTX-214-001-106](#) [VTX-214-010-209](#) [VTX-214-010-212](#) [VTX-214-005-0524](#) [VTX-214-001-305](#) [VTX-146-015-225](#) [VTX-146-100-212](#)
[VTX-146-120-218](#) [VTX-214-006-106](#) [VTX-214-001-124](#) [VTX-214-003-306](#) [VTX-214-0005-107](#) [VTX-121-3023-218](#) [VTX-146-060-215](#)
[VTX-146-100-224](#) [VTX-146-625-225](#) [VTX-214-020-124](#) [VTX-146-100-218](#) [VTX-146-300-230](#) [VTX-101-003](#) [VTX-214-005-0312](#) [VTX-](#)
[214-001-306](#) [VTX-214-001-318](#) [VTX-214-001-324](#) [VTX-214-003-315](#) [VTX-102-000](#) [VTX-214-001-312](#) [VTX-121-3015-412](#) [VTX-120-](#)
[5412-406](#) [VTX-214-005-015](#) [VTX-214-003-109](#) [VTX-131-001](#) [VTX-214-002-305](#) [VTX-146-500-240](#) [VTX-146-160-230](#) [VTX-146-500-230](#)
[VTX-214-005-424](#) [VTX-121-3023-418](#) [VTX-214-002-118](#) [VTX-214-001-309](#) [VTX-146-050-218](#) [VTX-214-003-106](#) [VTX-120-006-509](#)
[VTX-214-005-0324](#) [VTX-214-002-312](#) [VTX-214-001-312X](#) [VTX-214-010-206](#) [VTX-214-002-107](#) [VTX-214-002-106](#) [VTX-214-001-303](#)