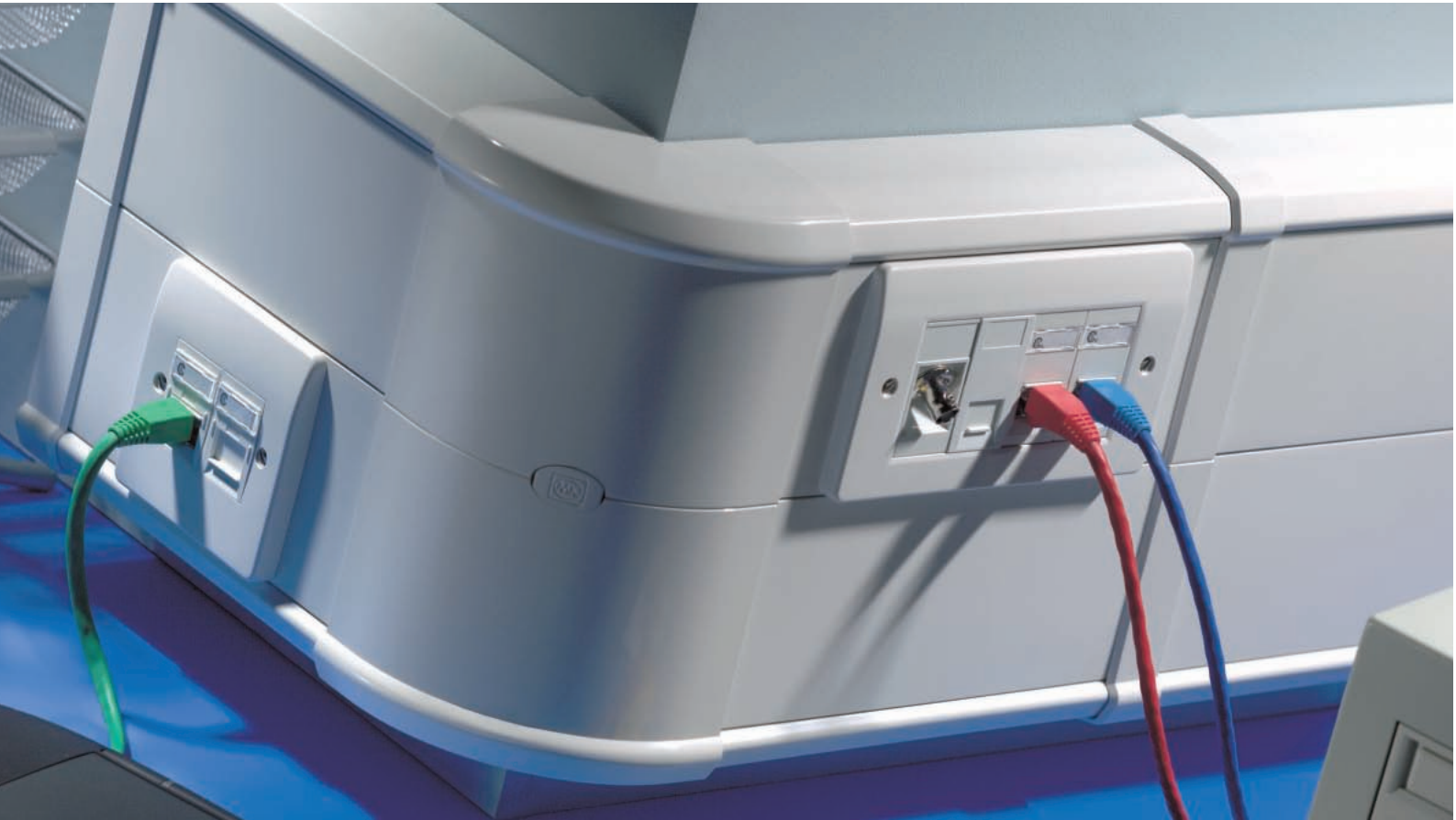


technical hotline +44 (0)1268 563720

perimeter and distribution | cable management



range introduction

feature benefits

Prestige 2com trunking is designed to meet the needs of current and future data cabling.

Prestige 2com is Cat 6 compliant and provides maximum capacity for data cabling.

Cat 6 compliant

50mm radius bends on all corners so cables lie in trunking correctly to avoid any deformation which may result in signal distortion and loss. Complies with and exceeds Cat 5e wiring regulations. Ideal also for future refurbishments using upgraded data cables – Cat 6A/7

Maximises capacity

60mm deep trunking with two equal compartments to maximise data channel cabling

Flexible accessories

Accessories can be mounted on either or both compartments – enables maximum use of wiring space in one compartment

Frames maximise space

Mounting frames for LUU6/Euro data outlets to maximise use of space

Stylish and robust

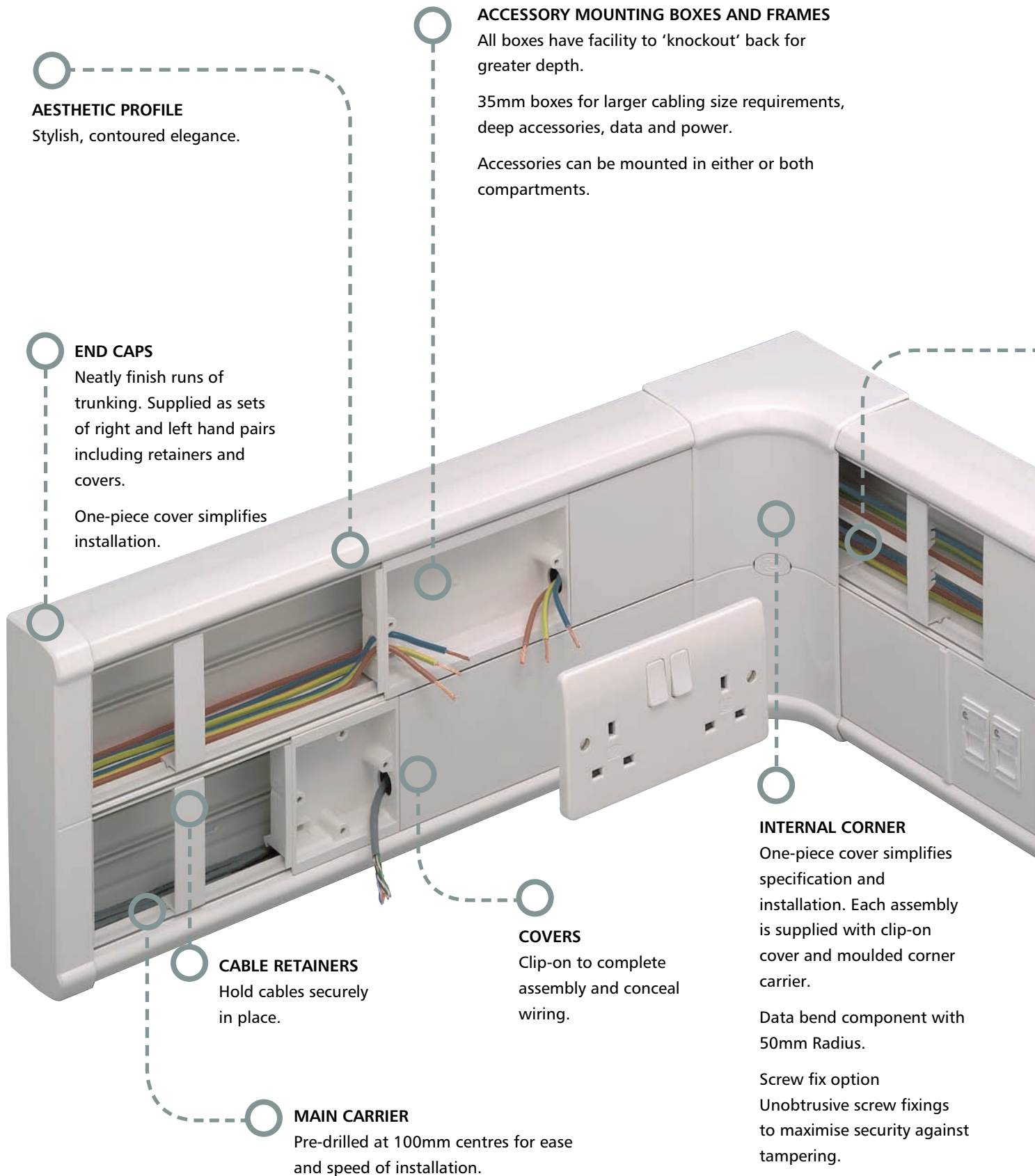
Single piece end caps, corners and couplers for improved aesthetics and solid construction. Screw fix option for security of corner fittings

Pre-drilled trunking bases

Eliminates the need to measure and drill fixing holes on site thus reducing installation time

All extrusions manufactured from 90% recycled material*

* Based on 2008 consumption.

**AESTHETIC PROFILE**

Stylish, contoured elegance.

END CAPS

Neatly finish runs of trunking. Supplied as sets of right and left hand pairs including retainers and covers.

One-piece cover simplifies installation.

ACCESSORY MOUNTING BOXES AND FRAMES

All boxes have facility to 'knockout' back for greater depth.

35mm boxes for larger cabling size requirements, deep accessories, data and power.

Accessories can be mounted in either or both compartments.

CABLE RETAINERS

Hold cables securely in place.

MAIN CARRIER

Pre-drilled at 100mm centres for ease and speed of installation.

COVERS

Clip-on to complete assembly and conceal wiring.

INTERNAL CORNER

One-piece cover simplifies specification and installation. Each assembly is supplied with clip-on cover and moulded corner carrier.

Data bend component with 50mm Radius.

Screw fix option
Unobtrusive screw fixings to maximise security against tampering.



EXTERNAL CORNER

One-piece cover component for ease of assembly and styling. Each assembly is supplied with clip-on cover and moulded corner carriers.

Data bend component with 50mm Radius.

Screw fix option: unobtrusive screw fixings to maximise security against tampering.

FLAT TEES AND ANGLES

These enable the Prestige 2com trunking configuration to follow the contours of the installation in the vertical plane and include 50mm radius inserts to ensure continued data cable protection.



CABLE DIVIDER

Sub-divides internal compartments.

2 COMPARTMENTS

For maximum data cable capacity complete compartment area can be used.

MINI TRUNKING ADAPTORS

For cable distribution to and from Prestige 2com a range of MK mini trunking and Egatube Conduit can be used.

COUPLER

One-piece cover component for ease of assembly. Each assembly is supplied with carrier moulding and clip-on cover (shown below).

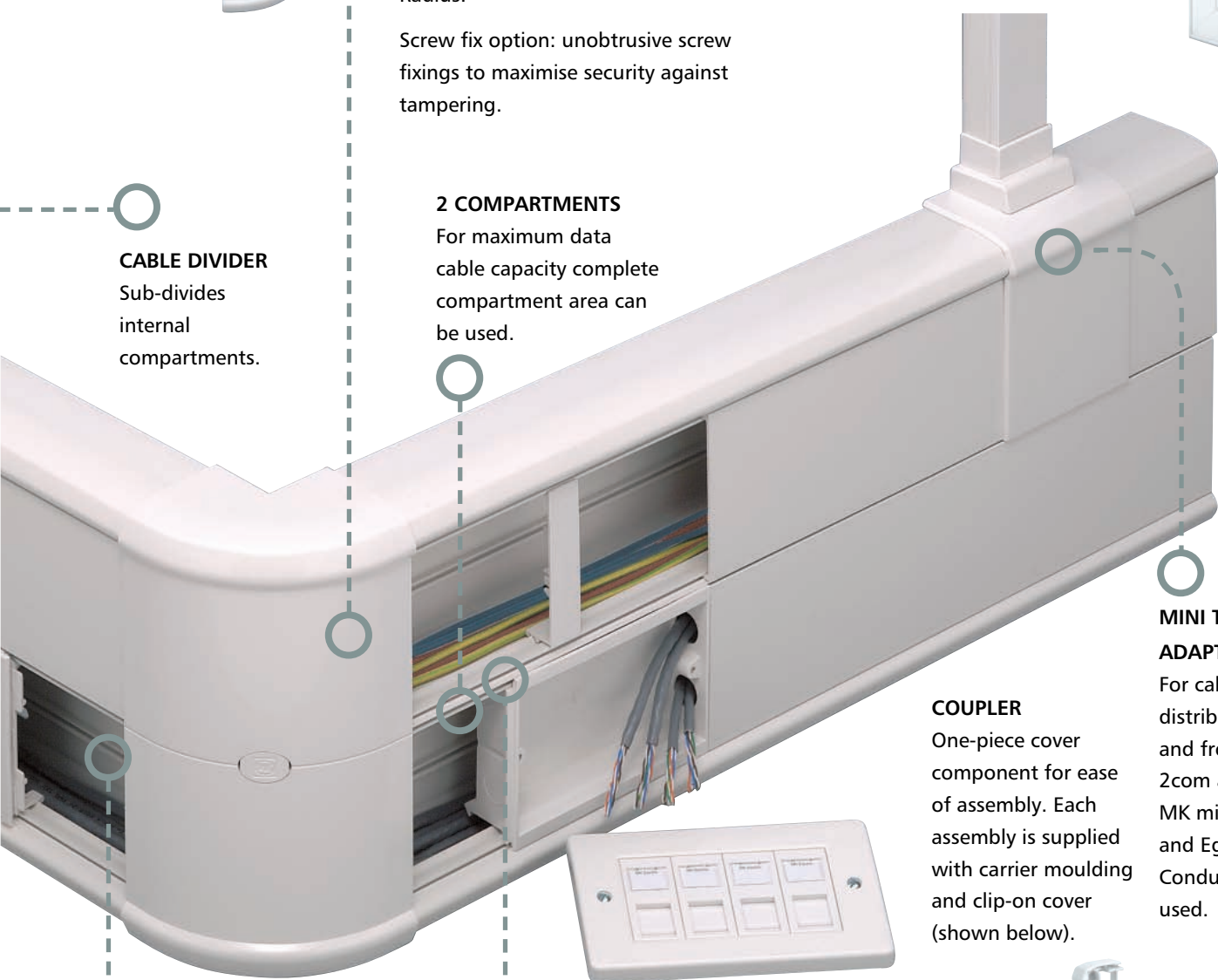
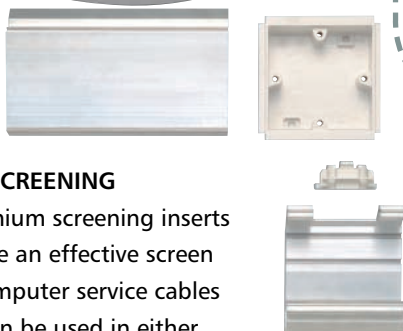
CROSSOVER BRIDGE

Permits cabling to cross from one cable compartment to another within the assembly, whilst maintaining segregation.



EMC SCREENING

Aluminium screening inserts provide an effective screen for computer service cables and can be used in either compartment.



Main Carrier

DIMENSIONS
210 X 60MM

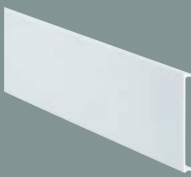


VTS/2001 WHI **6m**
3 METRE LENGTHS

VTS/2001 D1 WHI **4m**
2 METRE LENGTHS
FOR (NON UK) MARKETS

NOT SUPPLIED WITH
LID (COVER)

Straight Cover



VTS/5 WHI **30m**
3 METRE LENGTHS

VTS/5 D1 WHI **20m**
2 METRE LENGTHS
FOR (NON UK) MARKETS

NOTE each main carrier
requires two straight covers

Coupler Assembly



VTS/2005 WHI **2**

Lid Joint Cover



VTS/2010 WHI **10**
USED TO JOIN 2 COVER
PIECES AT REMOTE POINT
FROM COUPLER

Internal Corner Assembly

CONSISTS OF
COVER AND
CARRIER



VTS/2004 WHI **1**
INCLUDES ADDITIONAL
SCREW FIXING FOR
EXTRA SECURITY
50MM RADIUS BEND

External Corner Assembly

CONSISTS OF
COVER, CARRIER
AND RADIUS
INSERT



VTS/2003 WHI **1**
INCLUDES ADDITIONAL
SCREW FIXING FOR
EXTRA SECURITY
50MM RADIUS BEND

End Cap Assembly



VTS/2006 WHI **2**
END CAP ASSEMBLY

End Cap Cover and Retainer



VTS/2015 WHI **1**
END CAP RETAINER
VTS/2016 WHI **1**
END CAP COVER

Cable Retainer



VTS/2011 WHI **10**
CABLE RETAINER

Crossover Bridge



VTS/2090 WHI **10**
CROSSOVER BRIDGE

Mini Trunking Adaptor



VTS/2081 WHI **10**
YT1-YT3 MINI TRUNKING
ADAPTOR.
USE APPROPRIATE YEA
ADAPTOR (YEA1-YEA3)
TO CONNECT
MINI TRUNKING

VTS/2084 WHI **10**
YT4 MINI TRUNKING
ADAPTOR

Trunking Adaptor 50 X 50mm



VTS/2050 WHI **10**
50 X 50MM
TRUNKING ADAPTOR

technical hotline +44 (0)1268 563720

perimeter and distribution | cable management

SPARES

Corner Covers

Corner Carrier

Radius Insert

Cable Divider

INTERNAL AND EXTERNAL

INTERNAL AND EXTERNAL

EXTERNAL CORNER

3 METRE LENGTHS



VTS/2030 WHI 1
EXTERNAL CORNER COVER

VTS/2007 WHI 1
INTERNAL CORNER CARRIER

VTS/2009 WHI 1
50MM RADIUS BEND INSERT FOR DATA CABLES EXTERNAL CORNER

VTS/50 30m
CABLE DIVIDER 3 METRE LENGTHS

VTS/2040 WHI 1
INTERNAL CORNER COVER

VTS/2008 WHI 1
EXTERNAL CORNER CARRIER

Conduit/Blank Adaptor

Socket Spacer

MCB/RCD Housing

Mounting Frames



VTS/2020 WHI 10
CONDUIT/BLANK ADAPTOR WITH DRILL LOCATION. WILL ACCEPT 20/25MM CONDUIT

VTS/25 S WHI 10
ACCESSORY SOCKET SPACER TO ESTABLISH THE MINIMUM DISTANCE BETWEEN OUTLETS

VTS/KMH/1 WHI 1
VTS/MH WHI 1
MCB/RCD HOUSING WITH COVER

VTS/2060 WHI 10
2 GANG LUJ6C/RJ45 SUPPLIED WITH LID JOINT COVERS

VTS/6000 WHI 10
1 GANG ACCESSORY MOUNTING FRAME

VTS/2070 WHI 10
2 GANG EURO/RJ45 SUPPLIED WITH LID JOINT COVERS

VTS/7000 WHI 5
2 GANG ACCESSORY MOUNTING FRAME

Flat Tee

Flat Angle

EMC
Screening
VTS/2014 WHI **1**
50MM RADIUS BEND

VTS/2012 WHI **1**
50MM RADIUS BEND

VTS/2111 **6m**
SCREENING INSERT

21017SST9 **5**
SPARE BONDING KIT

VTS/2112 **1**
OUTLET BOX ACCESS
SECTION
Accessory
Boxes

VTS/6035 WHI

VTS/7035 WHI

VTS/8028 WHI

VTS/4545 WHI

VTS/4545R WHI

VTS/2017 WHI

VTS/6025 WHI **25**
1 GANG 25MM DEEP

VTS/6035 WHI **25**
1 GANG
35MM DEEP

VTS/2017 WHI **10**
BOX ADAPTOR

VTS/7025 WHI **10**
2 GANG 25MM DEEP

VTS/7035 WHI **10**
2 GANG 35MM DEEP

VTS/8028 WHI **5**
3 GANG
28MM DEEP

VTS/8035 WHI **10**
3 GANG 35MM DEEP

K3716 **10**
BOX EARTH TERMINAL

VTS/4545 WHI **10**
FLAT ADAPTOR PLATE
(NON UK)
45MM X 45MM APERTURE

VTS/4545R WHI **10**
RAISED ADAPTOR
PLATE (NON UK)
45MM X 45MM APERTURE

VTS/35B WHI **10**
ADAPTOR PLATE BASE
(NON UK)

X-ON Electronics

Largest Supplier of Electrical and Electronic Components

Click to view similar products for [Wire Identification](#) category:

Click to view products by [Mk](#) manufacturer:

Other Similar products are found below :

[CU6337-000](#) [CU6342-000](#) [FCA-410-12](#) [11631010](#) [1-1768037-1](#) [1-1768037-2](#) [1-1768050-0](#) [PXLK-VI](#) [Q62184-1](#) [A64304-000](#) [QMT221](#)
[HK032WE1NF038B](#) [1330-0519-10](#) [1395199-1](#) [1395200-1](#) [1395202-1](#) [DMVF050WE-300S6](#) [D-SCE-1K-2.4-50-4-CS7834](#) [1538738-1](#)
[E90935-000](#) [EC1238-000](#) [EC1465-000](#) [EC1855-000](#) [EC1859-000](#) [EC1863-000](#) [EC5415-000](#) [EC7277-000](#) [EC7352-000](#) [EC7603-000](#)
[EC7707-000](#) [EC7735-000](#) [EC7768-000](#) [EC7828-000](#) [EC7854-000](#) [EC7952-000](#) [EC8128-000](#) [1768037-8](#) [1768041-7](#) [NC-127191-10-9](#)
[HS048WE2NF038B](#) [C03232-000](#) [HTCM-SCE-14-4H-9](#) [HTMS-3/16-9](#) [HT-SCE-1/4-2.0-4](#) [HT-SCE-3/16-2.0-4](#) [HTTMS-1/2-1.50-9](#) [HTTMS-](#)
[CM-1/2-4H-9](#) [HX-SCE-19.0-50-9](#) [HX-SCE-6.4-50-4](#) [C25254-000](#)