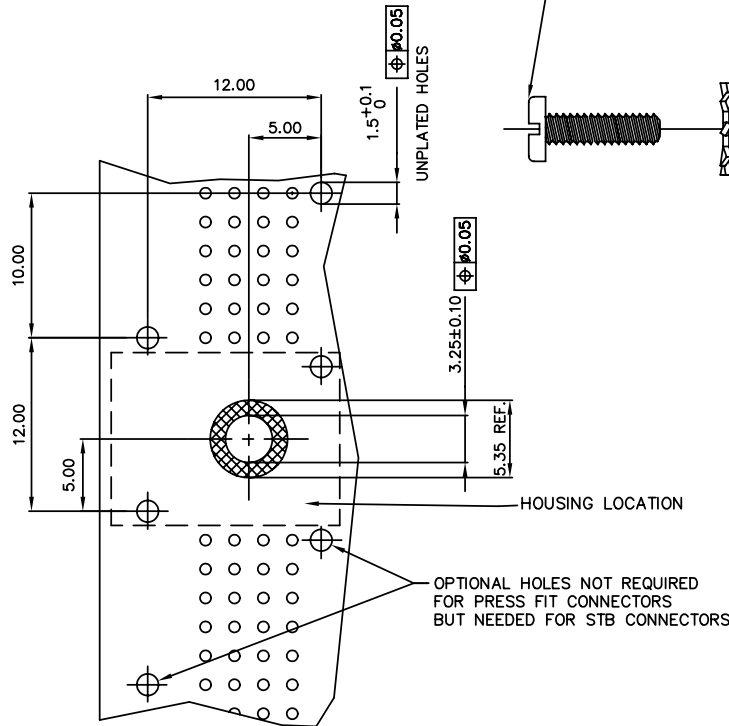
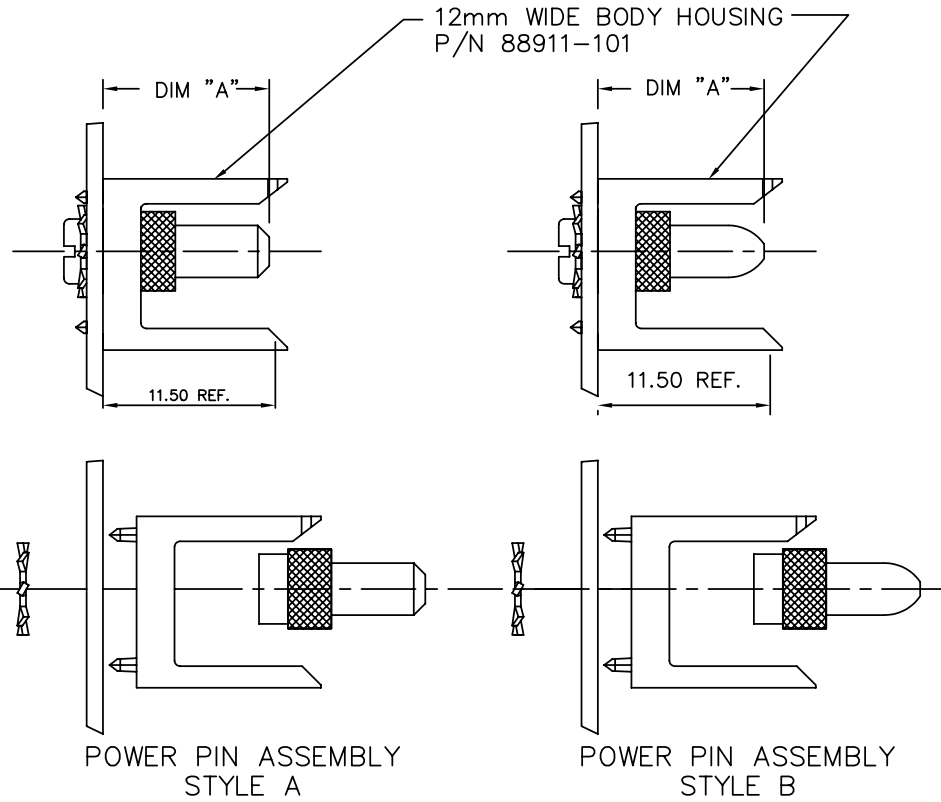


PRODUCT NUMBER
SEE TABLE-SHEET 2

-0YYLF	COMES WITH A BRASS SLOTTED PAN HEAD SCREW W/NICKEL PLATING	NOTE 4
-1YYLF	COMES WITH A STAINLESS STEEL COMBO PAN HEAD SCREW	NOTE 2



RECOMMENDED HOLE PATTERN
COMPONENT SIDE

rev	ecn no	dr	date
K	V94406	HTB	1999-12-01
L	V00746	LSS	2000-03-06
M	V01293	JWS	2000-06-01
N	V12634	EPK	2001-09-01
P	M05-0202	MHT	2005-09-23
R	M05-0286	MNR	2006-07-27
S	N10-0424	AZH	2010-12-29

www.fciconnect.com		surface ISO 1302	tolerance ISO 406 ISO 1101	projection MM
		TOLERANCES UNLESS OTHERWISE SPECIFIED		size A4
Dr	STU STONER	1991-12-10	ANGULAR	Scale 1:1
Eng	S.DOUTRICH	1991-12-10	LINEAR	0.X ± 0.30
Chr	S.STONER	1991-12-10	0° ± 2.0°	0.XX ± 0.15
Appr	S.STONER	1991-12-10	Product family	0.XXX ± 0.05
			METRAL	ECN N10-0424
			Spec ref	
title POWER PIN ASSEMBLY 12 mm		dwg no 91570		Rev. S
catalog no		CUSTOMER		sheet 1 of 2

1

2

3

4

PRODUCT NUMBER	DIM "A" ±0.10	SCREW LENGTH	PIN TIP	NOTES	LEAD FREE OPTION
91570-X01LF	11.50	7.92	STYLE A		NOTE 5
91570-X02LF	32.00	7.92	STYLE A	NOTE 3	
91570-X03LF	13.00	7.92	STYLE A	NOTE 3	
91570-X04LF	14.50	7.92	STYLE A	NOTE 3	
91570-X05LF	16.00	7.92	STYLE A	NOTE 3	
91570-X06LF	24.00	7.92	STYLE A	NOTE 3	
91570-X07LF	28.90	7.92	STYLE A	NOTE 3	
91570-X08LF	32.00	12.70	STYLE A	NOTE 3	
91570-X09LF	14.50	12.70	STYLE A	NOTE 3	
91570-X10LF	16.00	12.70	STYLE A	NOTE 3	
91570-X11LF	11.50	12.70	STYLE A		
91570-X12LF	32.00	12.70	STYLE B	NOTE 3	
91570-X13LF	14.50	12.70	STYLE B	NOTE 3	
91570-X14LF	11.50	12.70	STYLE B		
91570-X15LF	32.00	7.92	STYLE B	NOTE 3	
91570-X16LF	14.50	7.92	STYLE B	NOTE 3	
91570-X17LF	16.00	7.92	STYLE B	NOTE 3	
91570-X18LF	24.00	7.92	STYLE B	NOTE 3	
91570-X19LF	16.00	12.70	STYLE B	NOTE 3	
91570-X20LF	11.50	7.92	STYLE B		
91570-X21LF	28.90	7.92	STYLE B	NOTE 3	
91570-X22LF	13.00	7.92	STYLE B	NOTE 3	

A

B

C

D

A

B

C

D

NOTE 5



Copyright FCI.

NOTES:

- HOUSING SHOWN FOR APPLICATION CLARITY AND DOES NOT COME WITH POWER PINS AND PAN HEAD SCREWS
- TORQUE RATING FOR #4 STAINLESS STEEL COMBO PAN HEAD SCREW TO BE 5 IN/LBS. MAX
- MUST BE USED WITH THE METRAL(tm) PASS-THRU POWER CONTACT P.N. 91877
- TORQUE RATING FOR #4 BRASS SLOTTED PAN HEAD SCREW TO BE 3.75 IN/LBS. MAX.
- ADD "LF" SUFFIX AT THE END OF PART NUMBER FOR LEAD FREE OPTION.
- THIS PRODUCT MEETS EUROPEAN UNION DIRECTIVES AND OTHER COUNTRY REGULATION AS DESCRIBED IN GS-22-008.

-0YYLF	COMES WITH A BRASS SLOTTED PAN HEAD SCREW W/NICKEL PLATING	NOTE 4
-1YYLF	COMES WITH A STAINLESS STEEL COMBO PAN HEAD SCREW	NOTE 2

www.fciconnect.com		surface ISO 1302	tolerance ISO 406 ISO 1101	projection MM
		TOLERANCES UNLESS OTHERWISE SPECIFIED		
Dr	STU STONER	1991-12-10	ANGULAR	LINEAR
Eng	S.DOETRICH	1991-12-10	0.X	± 0.30
Chr	S.STONER	1991-12-10	0.XX	± 0.15
Appr	S.STONER	1991-12-10	0.XXX	± 0.05
Product family		METRAL		Spec ref
title		POWER PIN ASSEMBLY		Rev.
catalog no		12 mm		S
CUSTOMER		91570		sheet 2 of 2

REV F - 2009-04-17

1

2

3 PDM: Rev:S

STATUS: Released

4 Printed: Jan 07, 2011

X-ON Electronics

Largest Supplier of Electrical and Electronic Components

Click to view similar products for [Terminals](#) category:

Click to view products by [FCT Electronics](#) manufacturer:

Other Similar products are found below :

[HT-13-10](#) [71M-250-32-NB](#) [01-2065-1-0216](#) [00581P0075](#) [M10-10RX](#) [M10BCK](#) [60205-1](#) [604200-1](#) [60598-1-CUT-TAPE](#) [60617-1-C](#) [60873-1](#) [M14-516R/SK](#) [M14-6RSX](#) [M18-10FLX](#) [M18-8FBX](#) [M18-8R/LX](#) [M18BCK](#) [61314-6-C](#) [61-S](#) [61-SN-A](#) [62-NBM-A](#) [63-S](#) [640179-1](#) [640917-2-CUT-TAPE](#) [6501550002](#) [66107-2-C](#) [66107-4-C](#) [696683-1](#) [696834-1](#) [696861-1](#) [696931-1](#) [696999-1](#) [M8-516RK](#) [M86700006](#) [MA250DMFMX-A](#) [701-2007](#) [701-2307](#) [701-7761-03](#) [70F-110-32-PB](#) [718-N-A](#) [71M-187-20-NBL](#) [71M-250-32-NBL](#) [72F-187-20-NBL](#) [72M-250-32-NBL](#) [7310](#) [73F-250-32](#) [73F-250-32-NBL](#) [73F-250-32-NL](#) [F14-10C](#) [F-1M](#)