

Assembly instruction

Series MCX

AA 08.01.02
4954/GRO

No.27102

Tools and materials required:

Stanley blade

Scissors

Crimp tool (see table below)

Small soldering iron 40 Watts

Solder Sn/Pb 60/40

activated rosin flux

Assembly-tool 74 - 0 - 0 - 30

Angle plug for flexible cable

Cable entry: crimped

Connector types: (e.g.)

16 MCX - 50 - 2 - 11

This connector
is supplied
in 3 parts

Suitable cables e.g.:

RG 316/U / K 02252 d

Centre contact:

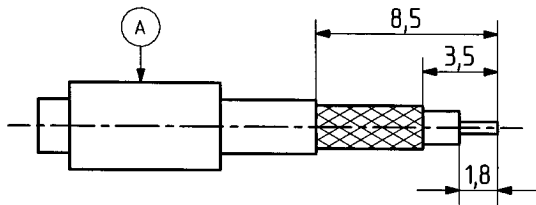
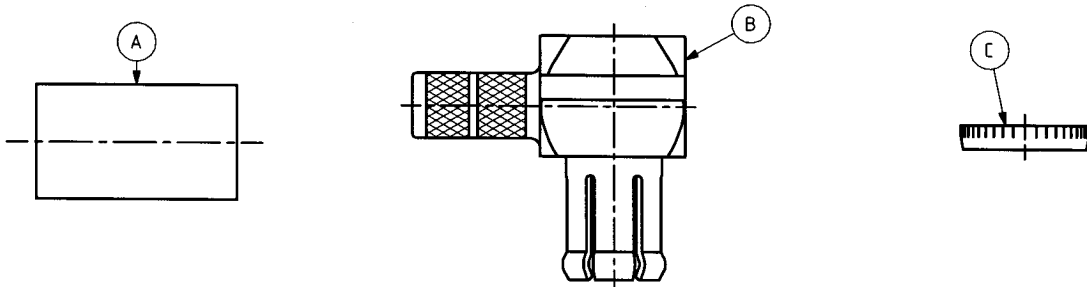
soldered

Braid:

cavity A

Crimp tool:

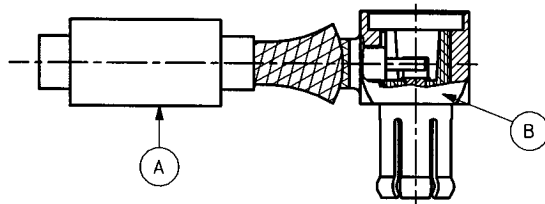
1/2 A (red)



Slide ferrule A onto cable.

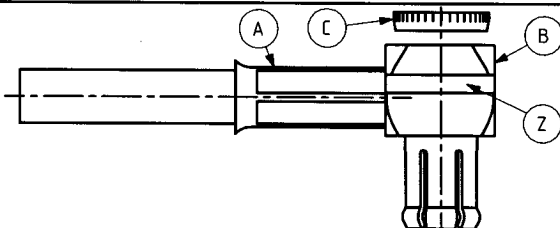
Prepare cable according to diagram.

CAUTION: Do not damage braid and inner conductor of cable!



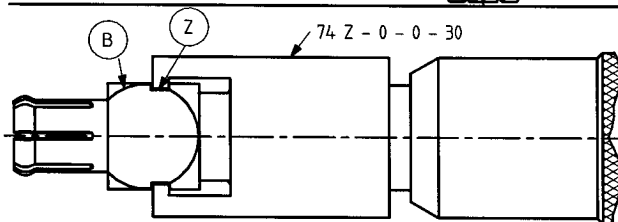
Splay out braid and insert cable in connector body B.

Ensure that braid lies above the crimp neck and the cable dielectric stopped on the Insulator.



Slide ferrule A over braid

and crimp as close to connector body B as possible. Solder inner conductor and place cover C on rear opening of body B.



Slide assembly-tool 74 Z - 0 - 0 - 30 in groove Z. Drive cover C into rear opening of body B by rotating the handle of the assembly-tool.

SUHNER's skilled staff and specialised equipment are available to carry out complete R.F.lead.assembly on your behalf. We mount your connectors on cables at economic prices!Please contact our representative for further details of this service



HUBER + SUHNER AG CH-9100 HERISAU

Deutscher Text: siehe Rückseite

X-ON Electronics

Largest Supplier of Electrical and Electronic Components

Click to view similar products for [huber & suhner](#) manufacturer:

Other Similar products are found below :

[31 MMBX-SMA-50-1/111_NE](#) [74Z-0-23-17](#) [32 MMBX-50-0-6 / 111_NE](#) [TL8A-11SMA-11SMA-03000-51](#) [TL8A-11SMA-11SMA-01500-51](#)
[23_SMA-50-0-1/111_NE](#) [TL-8A-11N-11SMA-01500-51](#) [7404.17.0003](#) [24_BNT-50-2-1/103_NE](#) [5906.17.0005](#) [Microbend R-13](#) [16_SMA-](#)
[50-2-55/199_NE](#) [16_SMA-50-2-43/133_NE](#) [11_716-50-7-31/033_-Y](#) [Minibend L-13](#) [74_Z-0-0-58](#) [6550.17.AA](#) [Microbend R-4.5](#) [74_Z-0-0-](#)
[53](#) [6603_SMA-50-2/199_NE](#) [85_SMC-50-0-1/133_NE](#) [MF53/1x8A_21MXP/11SK/305](#) [1324.17.0114](#) [75_Z-0-0-51](#) [31_PC24-SK-50-](#)
[1/199_NE](#) [65_BNC-50-0-2/133_NE](#) [76_Z-0-10-14](#) [65_MMCX-50-0-31/111_OE](#) [11_N-50-4-19/12-_NE](#) [80346275](#) [23_SHV-50-0-2/133_NE](#)
[33_SMA-QMA-50-1/133_NE](#) [11_C-50-7-6/133_NE](#) [6806.19.A](#) [33_716-N-50-51/-33_NE](#) [5930_N-50-050/19-_NE](#) [16_BNC-50-7-6/133_NE](#)
[11_SMB-50-2-41/111_NE](#) [Mini141 K-8](#) [33_BNC-N-50-1/133_NE](#) [6701.01.B](#) [25_N-50-7-8/133_NE](#) [22_BNC-50-0-5/133_NE](#) [6500_N-50-](#)
[1/199_NE](#) [3401.17.0033](#) [6601_SMA-50-1/199_NE](#) [74_Z-0-0-56](#) [3401.00.0022](#) [MF53/1x8A_21MXP/21SK_erg/305](#) [32_N-SMA-50-51/1--](#)
[_UE](#)