

iC-WK BMST WK2D

PACKAGE SPECIFICATION



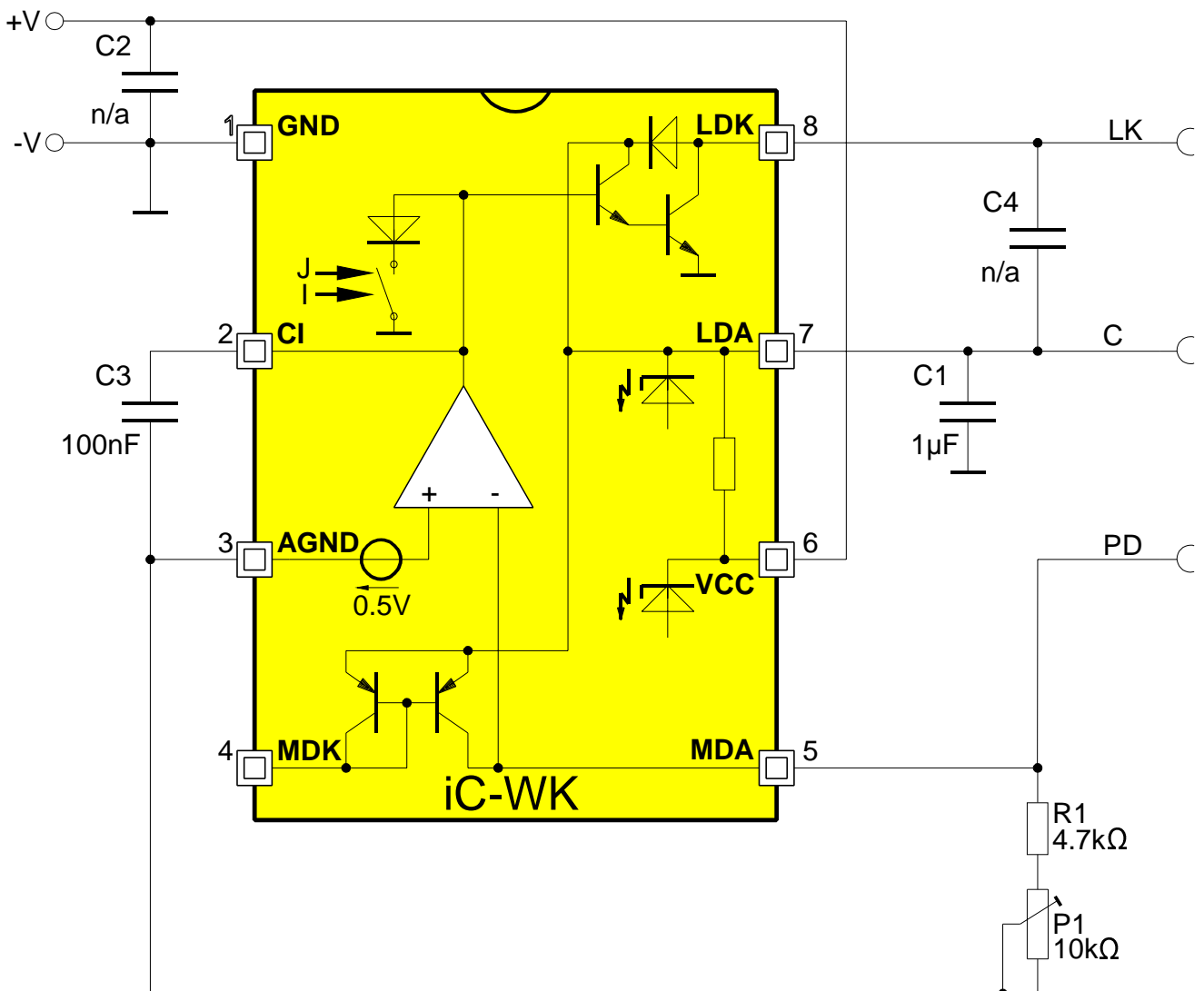
Rev A0, Page 2/6

BASIC ELECTRICAL CHARACTERISTICS

Operating Conditions $V_{CC} = 5V \pm 5\%$, $T_j = -0..50^\circ\text{C}$, unless otherwise noted

Item	Symbol	Parameter	Conditions	Tj °C	Fig.				Unit
						Min.	Typ.	Max.	
Total Device									
001	VDD	Permissible Supply Voltage				2.4		5.5	V
002	I(VDD)	Supply Current in VDD	closed control loop, I(PD)= 0, RM= 200Ω, I(LA)= 70mA	27				5.5	mA
003	ton()	Power On Delay	VCC: 0V-5V to 95% I(LD); I(LD)= 70mA, CI= 47nF I(LD)= 70mA, CI= 100nF	27				70	µs
								150	µs

SCHEMATIC DIAGRAM



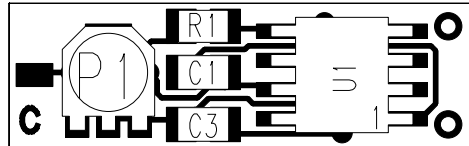
iC-WK BMST WK2D

PACKAGE SPECIFICATION

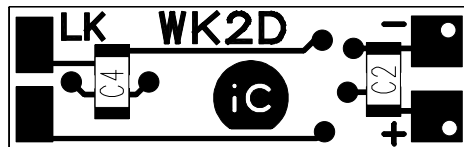
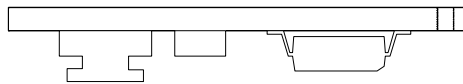


Rev A0, Page 3/6

DEVICE ASSEMBLY



TOP



BOTTOM

dra_wk2d_pack_assy

ASSEMBLY PART LIST

Item	Name	Device	Type/Value	Tolerance	Material	Comments	Package	Place-ment
01	U1	Laser Driver	iC-WK				SO8	TOP
04	R1	Resistor	4.7k	1%			RSMD0805	TOP
05	C1	Capacitor	1 μ F	10%			CSMD0805	TOP
06	C2	Capacitor	n. a.				CSMD0805	BOT
07	C3	Capacitor	100nF	20%			CSMD0805	TOP
08	C4	Capacitor	n. a.				CSMD0805	BOT
15	P1	Trimmer	10k	25%			meggit Typ 3165	TOP

Germany and other countries: LASER COMPONENTS GmbH, Phone: +49 8142 2864 0, Fax: +49 8142 2864 11, info@lasercomponents.com

USA: LASER COMPONENTS IG, Inc., Phone: +1 603 821 7040, Fax: +1 603 821 7041, info@laser-components.com

Great Britain: LASER COMPONENTS (UK) Ltd., Phone: +44 1245 491 499, Fax: +44 1245 491 801, info@lasercomponents.co.uk

France: OPTOPHOTONICS sa, Phone: +33 1 3959 5225, Fax: +33 1 3959 5350, info@optophotonics.fr

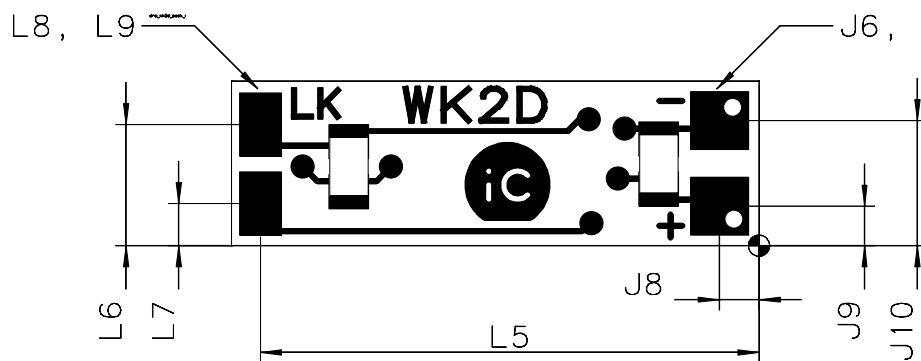
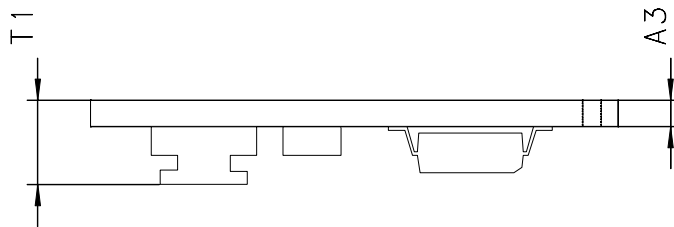
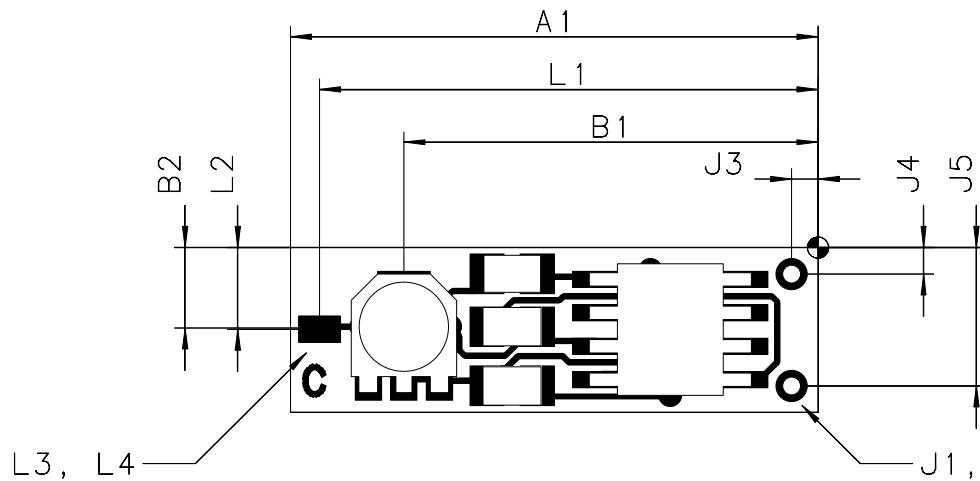
iC-WK BMST WK2D

PACKAGE SPECIFICATION



Rev A0, Page 4/6

PHYSICAL DIMENSIONS (given in mm)



iC-WK BMST WK2D

PACKAGE SPECIFICATION



Rev A0, Page 5/6

DIMENSION TABLE

Item	Parameter	Comments					Unit
			Min.	Typ.	Max.	Tolerance	
	Substrate						
A1	Outline X			20.00		± 0.4	mm
A2	Outline Y			6.25		± 0.15	mm
A3	Substrate Thickness (incl CU and Solder Stop)		0.9		1.1		mm
	Trimmer Placement						
B1	Trimmer Position vs. Reference X	Axis of Trimmer		15.7		± 0.6	mm
B2	Trimmer Position vs. Reference Y	Axis of Trimmer		3.0		± 0.6	mm
	Power Connector						
J1	Drill Diameter			0.7		-0 / +0.1	mm
J2	Pad Diameter			1.2		± 0.05	mm
J3	Drill Position vs. Reference X (-V, +V)			1.0		± 0.3	mm
J4	Drill Position vs. Reference Y (+V)			1.0		± 0.15	mm
J5	Drill Position vs. Reference Y (-V)			5.25		± 0.15	mm
J6	Pad Size X (-V,+V)			2.2		± 0.05	mm
J7	Pad Size Y (-V,+V)			2.2		± 0.05	mm
J8	Center Pad vs. Reference X (-V, +V)			1.5		± 0.3	mm
J9	Center Pad vs. Reference Y (+V)			1.5		± 0.15	mm
J10	Center Pad vs. Reference Y (-V)			4.75		± 0.15	mm
	Laser Connector						
L1	Center Pad vs. Reference X (Common Pin)			18.8		± 0.3	mm
L2	Center Pad vs. Reference Y (Common Pin)			3.1		± 0.15	mm
L3	Pad Size X (Common Pin)			1.6		± 0.05	mm
L4	Pad Size Y (Common Pin)			1.0		± 0.05	mm
L5	Center Pad vs. Reference X (LA, PD)			18.8		± 0.3	mm
L6	Center Pad vs. Reference Y (LA)			4.6		± 0.15	mm
L7	Center Pad vs. Reference Y (PD)			1.6		± 0.15	mm
L8	Pad Size X (LA, PD)			1.6		± 0.05	mm
L9	Pad Size Y (LA, PH)			2.4		± 0.05	mm
	Thickness						
T1	Overall Thickness		3.1				mm

iC-WK BMST WK2D

PACKAGE SPECIFICATION



Rev A0, Page 6/6

REVISION HISTORY

Rev	Notes	Pages affected
A0	Initial version	all

GENERAL HANDLING INSTRUCTIONS

Board micro system modules are not subject to dry pack delivery and are not intended for reflow soldering.

This specification is for a newly developed product. iC-Haus therefore reserves the right to modify data without further notice. Please contact us to ascertain the current data. The data specified is intended solely for the purpose of product description and is not to be deemed guaranteed in a legal sense. Any claims for damage against us - regardless of the legal basis - are excluded unless we are guilty of premeditation or gross negligence.

We do not assume any guarantee that the specified circuits or procedures are free of copyrights of third parties.

Copying - even as an excerpt - is only permitted with the approval of the publisher and precise reference to source.

X-ON Electronics

Largest Supplier of Electrical and Electronic Components

Click to view similar products for [laser components manufacturer](#):

Other Similar products are found below :

[FP-HD-L-635-7-30-F](#) [IG22X1000S4I](#) [FP-D-520-1-C-F](#) [FP-D-650-1D-C-F](#) [FP-LR-635-1-C-F](#) [FP-MV18-ST-660-20-30-F-STD](#) [FP-D-405-16-E-F](#) [FP-D-635-17-C-F](#) [FP-D-635-3-E-F](#) [FP-D-635-7-E-F](#) [FP-D-650-25-E-F](#) [FP-D-650-3-E-F](#) [FP-D-660-40-C-F](#) [FP-D-670-1-C-F](#) [FP-D-670-5-C-F](#) [FP-D-785-50-C-F](#) [FP-D-850-1-C-F](#) [FP-D-850-5-E-F](#) [FP-L-635-5-50-C](#) [FP-L-850-3-50-C](#) [FP-L-905-5-50-C](#) [FP-MG-19](#) [FP-MS-11.5](#) [FP-D-650-1-C-F](#) [IG17X1300S4I](#) [LC-LMD-635-03-03-A](#) [LC-LMD-650-05-01-A](#) [FP-MINI-635-1-F](#) [FP-MINI-650-1-F](#) [IG22X250S4I](#) [ILM12F-DOE-520-7-259-F](#) [FP-D-635-13-E-F](#) [FP-D-635-40-C-F](#) [FP-D-905-7-E-F](#) [FP-L-405-15-50-C](#) [FP-L-635-1-50-C](#) [FP-L-650-1-50-C](#) [LC-LMP-635-287-03-A](#) [FP-D-520-5-C-F](#) [IG17X250S4I](#) [ILM12F-DOE-635-7-247-F](#) [FP-D-635-1-C-F](#) [FP-D-635-1-C-F-24V](#) [ILM12F-D-520-1-C-F](#) [FP-D-650-20-C-F-24](#) [ADL-65104TA4](#) [ILM12F-L-520-7-58-F](#) [ADL-65104TL](#) [LC-LMD-635-02-03-A](#) [FP-HD-DOE-520-7-289-F](#)