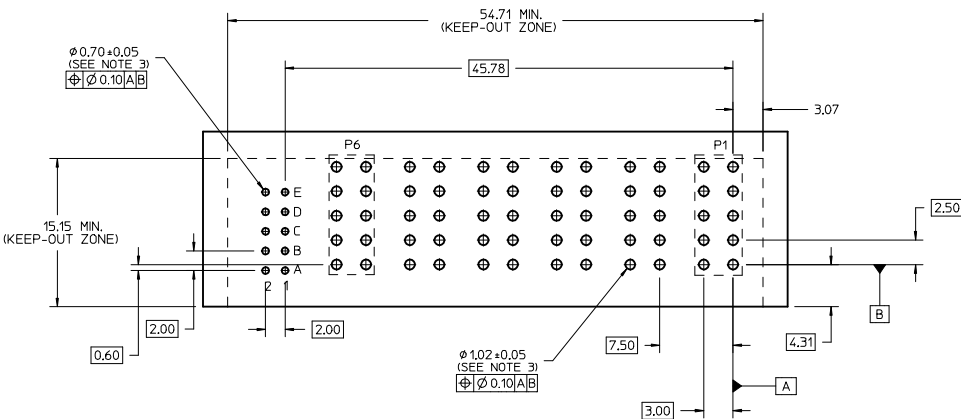
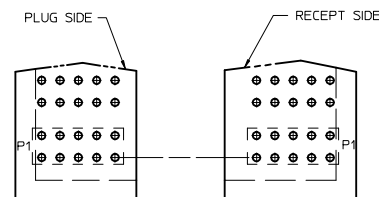
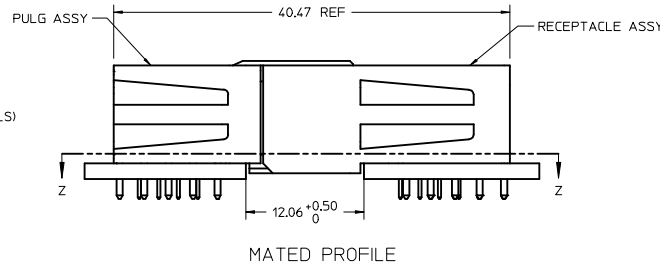
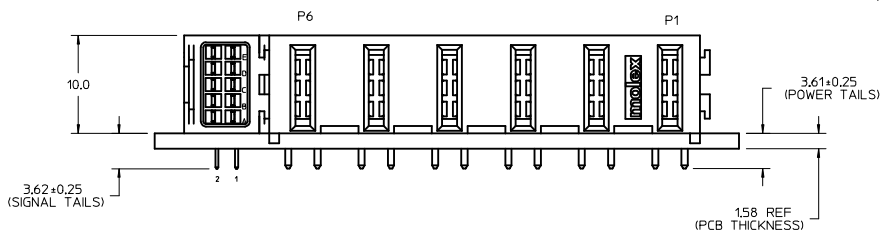


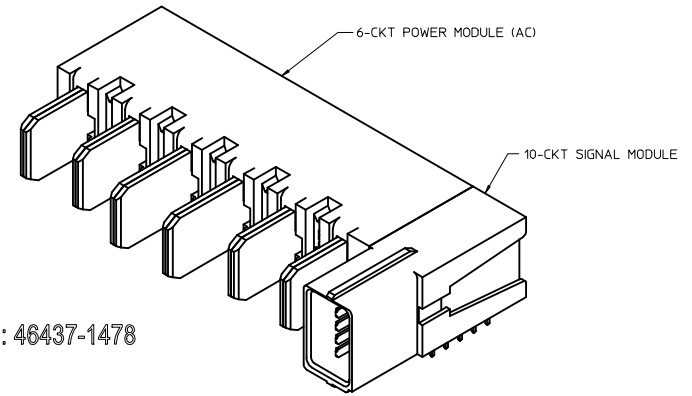
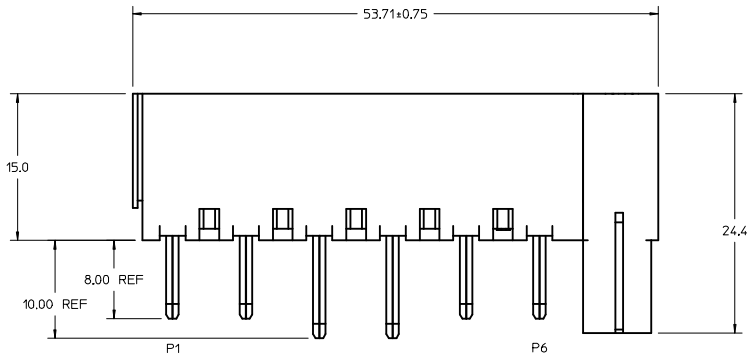
P/N: 46436-1478



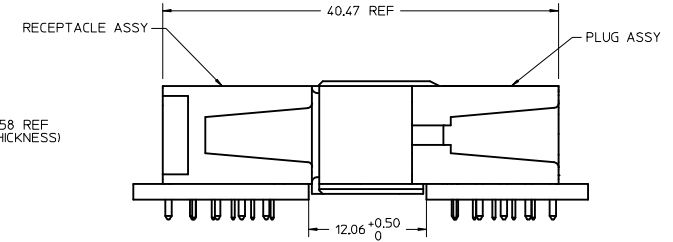
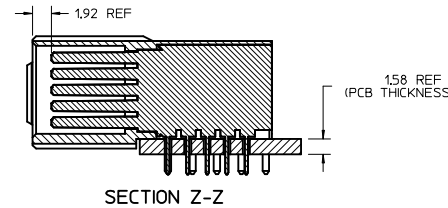
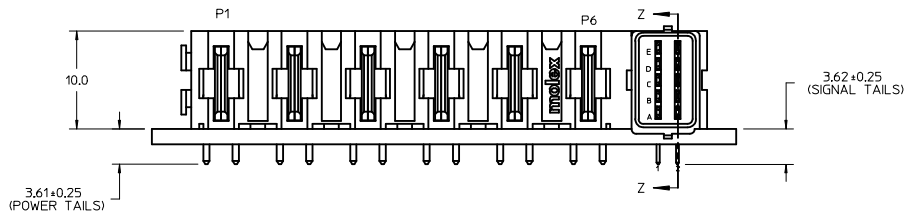
NOTES:

- MATERIAL:
 - HOUSINGS: LCP UL94 V-0, COLOR: BLACK
 - TERMINALS: COPPER ALLOY
 - PLATING: 1.27 MICROMETER (50 MICROINCH) NICKEL OVERALL WITH 2.54 MICROMETER (100 MICROINCH) SELECTIVE TIN ON TAILS AND 0.762 MICROMETER (30 MICROINCH) SELECTIVE GOLD ON CONTACT AREA
- PACKAGING: ASSEMBLIES TO BE TRAY PACKED PER PACKAGING SPEC: TBD
- PLATED THRU HOLE SIZE, REFER TO PS-46436-100 FOR DETAILS
- PRODUCT SPEC: PS-46436-100
- APPLICATION SPEC: AS-46436-100
- PRODUCT TO MEET RoHS REQUIREMENTS
- ASSEMBLY MATES WITH PLUG ASSEMBLY P/N 46437-1478
- TAIL DESIGN: SOLDER TAIL
- POWER AND SIGNAL CONTACTS ARE LUBRICATED

CHNG TAILS IEC NO: LCP2014-4001 DRAWN BY: BPI/SZCZOR 2013/01/24 CHECKED BY: CHYK/RPI/SZCZOR 2014/03/27 APPR: APATEL 2014/04/01	QUALITY SYMBOLS	GENERAL TOLERANCES (UNLESS SPECIFIED)	DIMENSION STYLE	SCALE	DESIGN UNITS	THIRD ANGLE PROJECTION
	∇=0 ∇=0 ∇=0	mm INCH 4 PLACES ±--- ±--- 3 PLACES ±--- ±--- 2 PLACES ±0.13 ±--- 1 PLACE ±0.25 ±--- ANGULAR ±1/2°	MM ONLY	4:1	METRIC	R/A RECEPTACLE ASSY 6AC-10S NO GUIDES TEN60 POWER FAMILY
	DRAFT WHERE APPLICABLE MUST REMAIN WITHIN DIMENSIONS	DRAWN BY: BPI/SZCZOR 2012/12/10 CHECKED BY: BPI/SZCZOR 2014/03/27 APPROVED BY: APATEL 2014/04/01	MATERIAL NO: 46436-1478 SIZE: D	TITLE: R/A RECEPTACLE ASSY DATE: 2014/03/27 DATE: 2014/04/01	MOLEX INCORPORATED	DOCUMENT NO: SD-46436-1478 SHEET NO: 1 OF 1
	THIS DRAWING CONTAINS INFORMATION THAT IS PROPRIETARY TO MOLEX INCORPORATED AND SHOULD NOT BE USED WITHOUT WRITTEN PERMISSION					



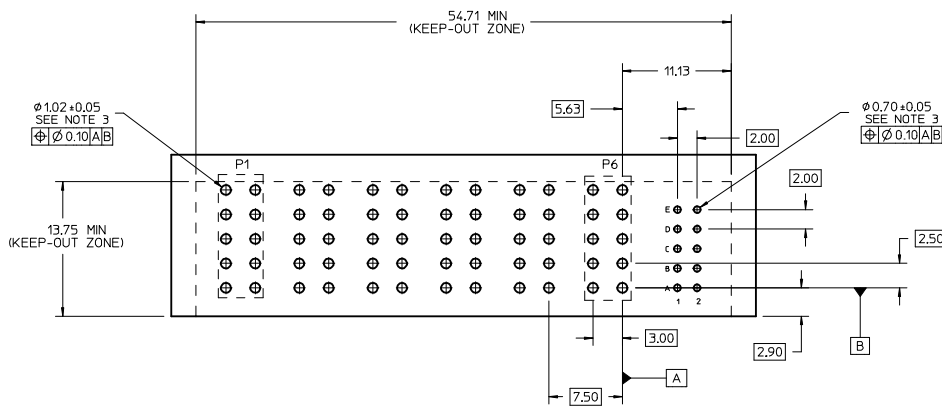
P/N: 46437-1478



MATED PROFILE

NOTES:

- MATERIAL:
 - HOUSINGS: LCP UL94, V-0, COLOR : BLACK
 - TERMINALS: HIGH CONDUCTIVITY COPPER ALLOY
 - PLATING: 127 MICROMETER (50 MICROINCH) NICKEL OVERALL WITH 2.54 MICROMETER (100 MICROINCH) SELECTIVE TIN ON TAILS AND 0.762 MICROMETER (30 MICROINCH) SELECTIVE GOLD ON CONTACT AREA
- PACKAGING: ASSEMBLIES TO BE TRAY PACKED PER PACKAGING SPEC: TBD
- PLATED THRU HOLE SIZE. REFER TO PS-46436-100 FOR DETAILS
- PRODUCT SPEC: PS-46436-100
- APPLICATION SPEC: AS-46436-100
- PRODUCT TO MEET ROHS REQUIREMENTS
- ASSEMBLY MATES TO MOLEX RECEPTACLE ASSEMBLY 46436-1478
- TAIL DESIGN: SOLDER TAIL
- SIGNAL CONTACTS ARE LUBRICATED.



RECOMMENDED PCB LAYOUT AND KEEP-OUT ZONE

INITIAL RELEASE IEC NO. UCF2014-4001 DRAWN BY: BPI/SZCZOR 2013/01/24 CHECKED BY: CHYK/RPI/SZCZOR 2014/03/26 APPR: APATEL 2014/04/01	QUALITY SYMBOLS ▽=0 ▽=0 ▽=0	GENERAL TOLERANCES (UNLESS SPECIFIED)		DIMENSION STYLE MM ONLY	SCALE 4:1	DESIGN UNITS METRIC	THIRD ANGLE PROJECTION	
		4 PLACES ± --- ± --- 3 PLACES ± --- ± --- 2 PLACES ± 0.13 ± --- 1 PLACE ± 0.25 ± ---	mm INCH	DRAWN BY: BPI/SZCZOR DATE: 2012/12/07 CHECKED BY: DATE: 2014/03/26 APPROVED BY: DATE: 2014/04/01	TITLE: R/A PLUG ASSY 6AC-10S NO GUIDES TEN60 POWER FAMILY	MOLEX INCORPORATED	MATERIAL NO. 46437-1478 DOCUMENT NO. SD-46437-1478	SHEET NO. 1 OF 1
		DRAFT WHERE APPLICABLE MUST REMAIN WITHIN DIMENSIONS		SIZE D	THIS DRAWING CONTAINS INFORMATION THAT IS PROPRIETARY TO MOLEX INCORPORATED AND SHOULD NOT BE USED WITHOUT WRITTEN PERMISSION			

X-ON Electronics

Largest Supplier of Electrical and Electronic Components

Click to view similar products for [molex manufacturer](#):

Other Similar products are found below :

[60506-C-50](#) [73108](#) [72903](#) [1062837003](#) [0533241060](#) [68301-1017](#) [71506-C](#) [880504](#) [387790039](#) [53254-0710](#) [85071-0017](#) [387204903](#)
[783472003](#) [514412093](#) [0026482195](#) [0191310031](#) [503308-4410](#) [0008650814](#) [791099208](#) [0039000218](#) [89762-1403](#) [89762-1542](#) [89762-1582](#)
[0011404526](#) [00136](#) [0022173102](#) [0026615060](#) [CR4006A30M003](#) [0039532085](#) [58098-0628](#) [0003092041](#) [0008520123](#) [0011030025](#)
[0011184017](#) [0022162060](#) [0022552102](#) [01312](#) [M15730061](#) [61432](#) [6150300002](#) [CS63W64](#) [CS8264N](#) [CS8365N](#) [CS8369](#) [62201-8780](#) [62500-1774](#) [M37730026](#) [63103-50](#) [63443-2215](#) [63443-3160](#)