

**Mini, 7/8" Field Attachable Connectors**

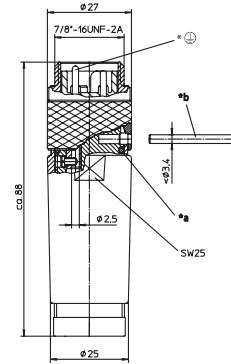
RSC 30-RSC 50 | RKC 30-RKC 50



**Male, 3-, 4-, and 5-Pole**

Field attachable connector, Mini, 7/8" male connector 3-, 4-, and 5-pole with threaded joint, assembling with screw terminals.

**RSC 30-RSC 50**



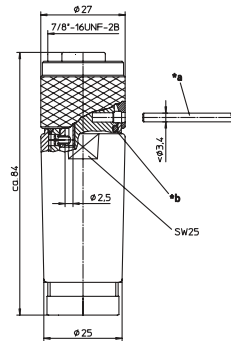
- \*a O-ring
- \*b Pin or screwdriver as assembly tool
- \*⊕ Contact 1.5 leading



**Female, 3-, 4-, and 5-Pole**

Field attachable connector, Mini, 7/8" female connector 3-, 4-, and 5-pole with threaded joint, assembling with screw terminals.

**RKC 30-RKC 50**

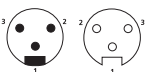


- \*a O-ring
- \*b Pin or screwdriver as assembly tool

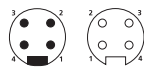
**Pin Assignments**

Mini, 7/8" - Male / Female

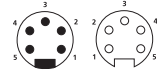
**3 poles**



**4 poles**



**5 poles**





# Be Certain with Belden

## Mini, 7/8" Field Attachable Connectors

RSC 30-RSC 50 | RKC 30-RKC 50

### Technical Data

#### Environmental













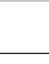
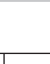
Degree of protection IP 67 / NEMA 6P  
 Operating temperature range -40°C (-40°F) / +90°C (+194°F)

#### Mechanical

Housing / Molded body PA  
 Insert TPU, self-extinguishing  
 Contact CuZn, gold over nickel plated  
 Coupling nut Al anodized  
 O-ring NBR  
 Mode of connection screw terminals  
 Connectable conductor max. 1.5 mm<sup>2</sup>

#### Electrical

Contact resistance ≤ 5 mΩ  
 Nominal current at 40°C 3 poles 12 A  
 4-5 poles 9 A  
 Nominal voltage 240 V  
 Rated voltage 250 V  
 Test voltage 3 poles 2.5 kV eff. / 60 s  
 4-5 poles 1.5 kV eff. / 60 s  
 Insulation resistance > 10<sup>9</sup> Ω  
 Pollution degree 3

Part Number		Pins	Cable Diameter Range	Characteristics
Male	Female			
RSC 30/9	RKC 30/9	3	∅ 6.0 - 8.0 mm	 
RSC 30/11	RKC 30/11		∅ 8.0 - 10.0 mm	 
RSC 40/9	RKC 40/9	4	∅ 6.0 - 8.0 mm	 
RSC 50/9	RKC 50/9	5	∅ 6.0 - 8.0 mm	 
RSC 50/11	RKC 50/11		∅ 8.0 - 10.0 mm	 
RSC 50/13.5	RKC 50/13.5		∅ 10.0 - 12.0 mm	 
RSC 50/16	RKC 50/16		∅ 12.0 - 14.0 mm	 

## X-ON Electronics

Largest Supplier of Electrical and Electronic Components

*Click to view similar products for [lumberg](#) manufacturer:*

Other Similar products are found below :

[RK20-603/5M](#) [ASBSM 10/LED 3](#) [ASBS-R 8/LED 5-4](#) [ASBSV 8 5](#) [BTO 1 V ROT](#) [BTOR 1 SCHWARZ](#) [18315 0976 PMC 151](#) [KRE8](#) [SBS](#)  
[4/LED 3](#) [SFV 80](#) [RK30/2M](#) [RKWT 4-07/5M](#) [ASBS-R 4 5-4](#) [ASBS-R 4/LED 5-4](#) [BTO 1 ROT](#) [BTO 1 SCHWARZ](#) [BTO 1 V SCHWARZ](#)  
[BTOR 1 GELB](#) [BTOR 1 WEISS](#) [KB3](#) [KRES10](#) [KRESS8](#) [KS8](#) [KRM 07](#) [2480 01](#) [0103 03](#) [WKV 81](#) [RK 30-738/20F](#) [RKMV 4-225/10 M](#)  
[RKT 5-644/2M](#) [RKT 4-679/5M](#) [HZ30](#) [ASBS 2 M12-S2326](#) [1614 16](#) [0985 706 100/10M](#) [RST 4-RKWT 4-602/1M](#) [WKV50](#) [RST 4-633/2M](#)  
[RST 4-RKWT 4-602/3M](#) [RS-TU](#) [WSV 30](#) [0986 EMC 102](#) [0250 03](#) [RKWT 5-612/5M](#) [0980 ESL 393-121](#) [RST 5L-RKT 5L-949/5 M](#) [ASBM](#)  
[6/LED 3-344/5 M](#) [RKT 4-646/2M](#) [RKHL 8/S 5,5](#) [0985 YM57530 100/20M](#)