

IB and IS series

Sealed momentary pushbutton switches

Distinctive features and specifications



- Snap-in and threaded bushing models
- Compact, light in weight
 - Behind-panel depth of 13 mm (.512) only
 - 50 % reduction in weight compared to metallic models
- Tactile feedback
- Sealed to IP 67

ENVIRONMENTAL SPECIFICATIONS

- Degree of protection : IP 67
- Shock resistance : 100 g according to IEC 512-4, test 6c
- Vibration resistance : 10-500 Hz - 10 g according to IEC 512-4, test 6d
- Salt spray : IEC 512-6, test 11f
- Operating temperature : -40°C to +85°C

MATERIALS

- Case : thermoplastic UL94-V0
- Plunger : polyamide 6/6
- Bushing/bezel : polyamide 6/6
- Contacts : silver, gold plated
- Terminal seal : epoxy

ELECTRICAL AND GENERAL SPECIFICATIONS

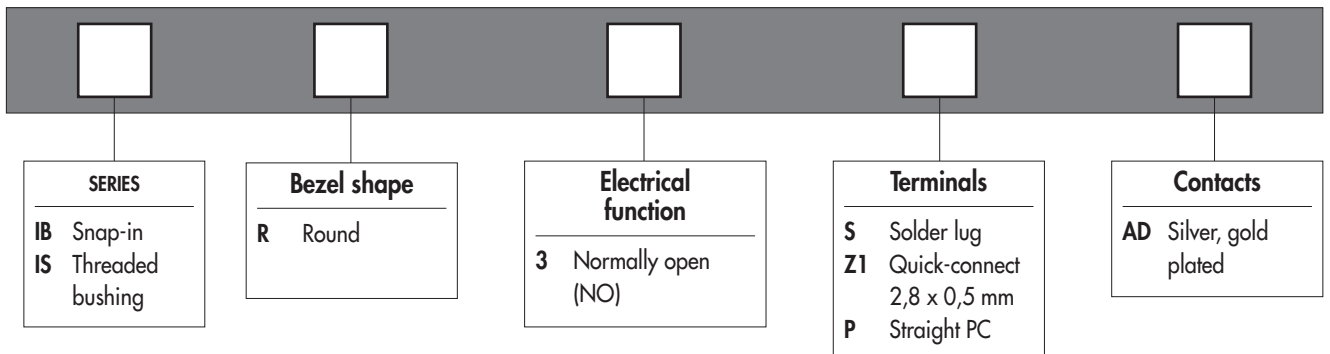
- Max. current/voltage rating with resistive load :
400mA 32VAC - 100mA 50VDC - 125mA 125VAC
- Initial contact resistance : 50 mΩ max.
- Insulation resistance : 1 GΩ min. at 500VDC
- Dielectric strength : 1.000 VAC rms
- Electrical life at full load : 500.000 cycles
- Panel thickness :
 - IB series : 0,8 mm (.031) min. - 1,8 mm (.071) max.
 - IS series : 1,5 mm (.059) min. - 4 mm (.157) max.
- Total travel : 1,5 mm (.059)
- Operating force : 2N to 5N
- Contact bounce : 10 ms
- Mechanical life : 1.000.000 cycles
- Torque : 1,5 Nm max. applied to nut
- Soldering : 300°C max. for 3 seconds

IB and IS series

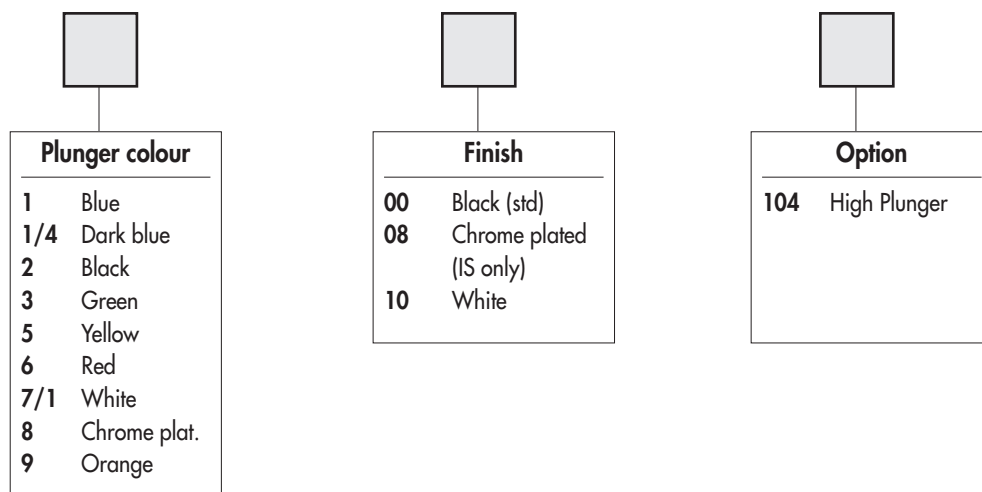
Sealed momentary pushbutton switches

Overview

MODEL
STRUCTURE



OPTIONS



ABOUT THIS SERIES

On the following pages, you will find successively :

- model structure of switches and options in the same order as in above chart

Dimensions : first dimensions are in mm while inches are shown as bracketed numbers.



NOTICE : please note that not all combinations of above numbers are available. Refer to the following pages for further information.



A sealing boot is available to protect the switches against frost and sand. It is presented at the end of the series and in section H.



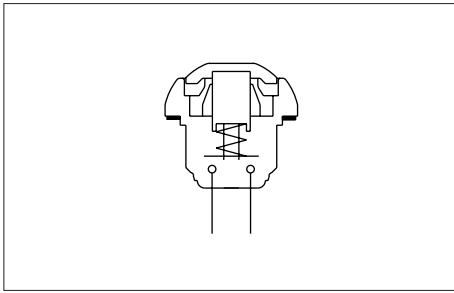
Mounting accessories : Standard hardware supplied : 1 flat seal (IB series)
1 hex nut 14 mm (.551) across flats and 1 flat seal (IS series). The hex nut is presented in section I (part number U166).



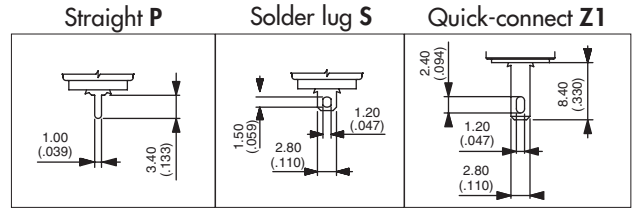
Packaging unit : 50 pieces

IB and IS series

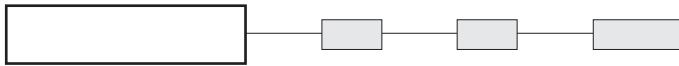
Sealed momentary pushbutton switches



- Nine plunger colours
- Flat plunger top allowing marking
- Antirotation bushing



MODEL STRUCTURE



B

Snap-in mounting - solder lugs

→ Flat

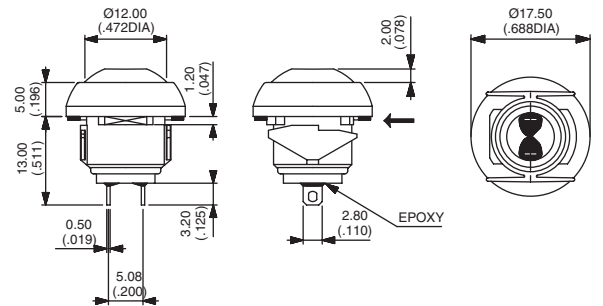
Panel thickness : 0,8 mm to 1,8 mm



IBR3SAD



Normally open



Also available with straight PC : **IBR3PAD** or quick-connect terminals : **IBR3Z1AD**

Mounting by threaded bushing - solder lugs

→ Flat

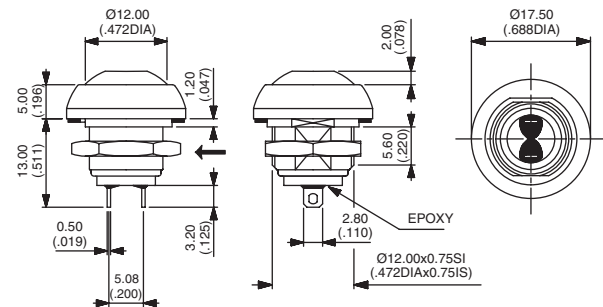
Panel thickness : 1,5 mm to 4 mm



ISR3SAD



Normally open



Also available with straight PC : **ISR3PAD** or quick-connect terminals : **ISR3Z1AD**

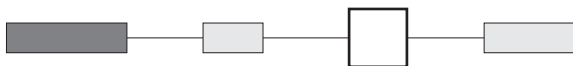
PLUNGER COLOUR



Plunger marking : consult factory.

1 : blue - 1/4 : dark blue - 2 : black - 3 : green - 5 : yellow - 6 : red - 7/1 : white - 8 : chrome plated - 9 : orange

BUSHING AND BEZEL FINISH



00 : Black (standard)

08 : Chrome plated (IS series only)

10 : White

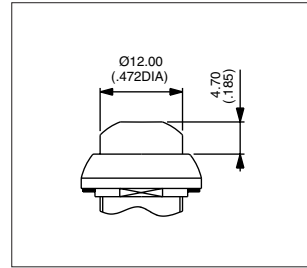
IB and IS series

Sealed momentary pushbutton switches

PLUNGER OPTION

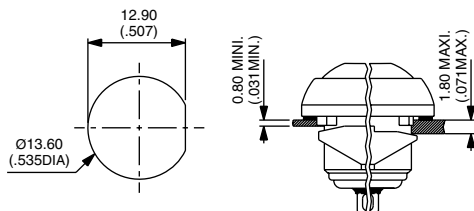


104 : High plunger

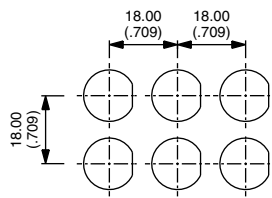


IB SERIES MOUNTING

Panel cut-out

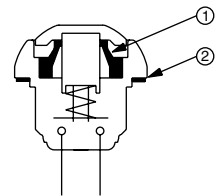


Matrix mounting



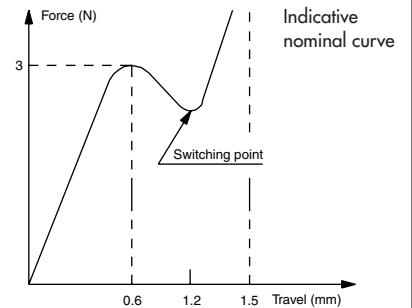
TACTILE FEEDBACK

Cross section



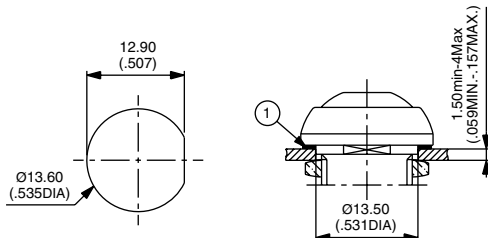
① Elastomeric membrane ② Flat seal

Operating force/travel

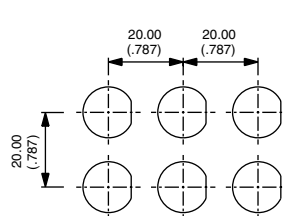


IS SERIES MOUNTING

Panel cut-out



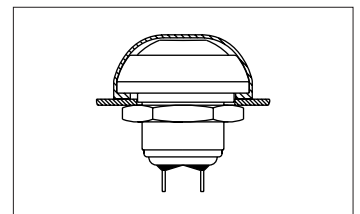
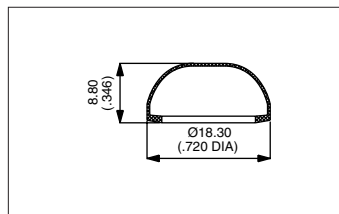
Matrix mounting



ADDITIONAL SEALING

By silicone boot, transparent (**U5125**) or black (**U5125-2**), for protection against frost and abrasion by sand. Order separately.

Operating temperature : -40°C to +125°C
Life expectancy : 500 000 cycles



X-ON Electronics

Largest Supplier of Electrical and Electronic Components

Click to view similar products for [apem](#) manufacturer:

Other Similar products are found below :

[48](#) [SLB13814](#) [SLC120025](#) [DA04T](#) [Q6F1CXXB24](#) [SLG12004](#) [SLB1281R5](#) [DPL-02](#) [DA08](#) [5D15F1534](#) [M11L0A1M](#) [M11L0B1M](#)
[M31L0M1M](#) [CW-A0BK1A00A0](#) [MAB6B](#) [A019101](#) [A019305](#) [A019409](#) [A029301](#) [A1PCA0X106J103](#) [Q16F1BXXR12E](#) [Q22F1BXXY12E](#)
[Q22F1CXXB24E](#) [Q22F1CXXG12E](#) [Q8P1BXXY110E](#) [Q8P3BXXG12E](#) [Q8P7BZZRYG12E](#) [Q8R3BXXG02E](#) [121442RA](#) [HF-33S10](#)
[HF44R11](#) [HF45R10](#) [HFX44S00](#) [DMR10](#) [DSR04T](#) [AV0830C900](#) [AV19810KMZB](#) [MSS22](#) [BD150A01RE0000](#) [HS1T24GA](#) [1D09034](#) [1Z03](#)
[1ZZ](#) [NZAA0477](#) [NZAA1475](#) [NZAB1475](#) [NZAB1477](#) [9433CDB](#) [LP1503N20V00SHIM](#) [LPI3124G1K247XX](#)