

## COMPONENTS, CONNECTORS & CABLING GUIDE

## XLR CONNECTORS

A range of audio and video connectors incorporating many innovative features. The cable mounting plugs and sockets feature robust die-cast metal back shells or the newly introduced plastic back shells both incorporating an anti-vibration collar. The whole product range can be fitted with a unique reusable colour coding system which enables fast identification of audio/video channels.

### Series: Die Cast Metal Back Shell Cable Plugs

- ▶ Available with Silver or Gold Contacts
- ▶ 3, 4 and 5 pin configuration
- ▶ Nickel or Black shell



Part Number Selection	Silver Contacts		Gold Contacts	
	Nickel	Black	Nickel	Black
3 Way	701-0300	709-0300	705-0300	713-0300
4 Way	701-0400	709-0400	705-0400	713-0400
5 Way	701-0500	709-0500	705-0500	713-0500

### Series: Plastic Back Shell Cable Plugs

- ▶ Available with Silver or Gold Contacts
- ▶ 3, 4 and 5 pin configuration
- ▶ Nickel or Black shell



Part Number Selection	Silver Contacts		Gold Contacts	
	Nickel	Black	Nickel	Black
3 Way	801-0300	805-0300	803-0300	807-0300
4 Way	801-0400	805-0400	803-0400	807-0400
5 Way	801-0500	805-0500	803-0500	807-0500

### Series: Die Cast Metal Back Shell Cable Sockets

- ▶ Available with Silver or Gold Contacts
- ▶ 3, 4 and 5 pin configuration
- ▶ Nickel or Black shell



Part Number Selection	Silver Contacts		Gold Contacts	
	Nickel	Black	Nickel	Black
3 Way	700-0300	708-0300	704-0300	712-0300
4 Way	700-0400	708-0400	704-0400	712-0400
5 Way	700-0500	708-0500	704-0500	712-0500

### Series: Plastic Back Shell Cable Sockets

- ▶ Available with Silver or Gold Contacts
- ▶ 3, 4 and 5 pin configuration
- ▶ Nickel or Black shell



Part Number Selection	Silver Contacts		Gold Contacts	
	Nickel	Black	Nickel	Black
3 Way	800-0300	804-0300	802-0300	806-0300
4 Way	800-0400	804-0400	802-0400	806-0400
5 Way	800-0500	804-0500	802-0500	806-0500

### Series: Panel Plugs

- ▶ Available with Silver or Gold Contacts
- ▶ 3, 4 and 5 pin configuration
- ▶ Nickel or Black shell



Part Number Selection	Silver Contacts		Gold Contacts	
	Nickel	Black	Nickel	Black
3 Way	703-0300	711-0300	707-0300	715-0300
4 Way	703-0400	711-0400	707-0400	715-0400
5 Way	703-0500	711-0500	707-0500	715-0500

### Series: Panel Sockets

- ▶ Available with Silver or Gold Contacts
- ▶ 3, 4 and 5 pin configuration
- ▶ Nickel or Black shell



Part Number Selection	Silver Contacts		Gold Contacts	
	Nickel	Black	Nickel	Black
3 Way	702-0300	710-0300	706-0300	714-0300
4 Way	702-0400	710-0400	706-0400	714-0400
5 Way	702-0500	710-0500	706-0500	714-0500



## UNIVERSAL PANEL MOUNTING CONNECTORS

A range of panel mounting connectors which utilises the same panel mounting cut-out for both plugs and sockets, which makes the product range extremely versatile. The range can be front or rear panel mounted and is available in nickel or black chrome shell finish, with either silver or gold plated contact options.

### Series: Panel Plugs

- ▶ Available with Silver or Gold Contacts
- ▶ Nickel or Black shell
- ▶ 3, 4 and 5 pin configuration

Part Number Selection	Silver Contacts		Gold Contacts	
	Nickel	Black	Nickel	Black
3 Way	717-0300	719-0300	723-0300	725-0300
4 Way	717-0400	719-0400	723-0400	725-0400
5 Way	717-0500	719-0500	723-0500	725-0500



### Series: Panel Sockets

- ▶ Available with Silver or Gold Contacts
- ▶ Nickel or Black shell
- ▶ 3, 4 and 5 pin configuration

Part Number Selection	Silver Contacts		Gold Contacts	
	Nickel	Black	Nickel	Black
3 Way	716-0300	718-0300	722-0300	724-0300
4 Way	716-0400	718-0400	722-0400	724-0400
5 Way	716-0500	718-0500	722-0500	724-0500



## UNIVERSAL PANEL MOUNTING CONNECTORS, NON LATCHING

The universal range of connectors is also available in a non-latching version for users who prefer the slightly faster disconnection that this type of connector allows.

### Series: Panel Plugs

- ▶ Available with Silver or Gold Contacts
- ▶ Nickel or Black shell
- ▶ 3, 4 and 5 pin configuration

Part Number Selection	Silver Contacts		Gold Contacts	
	Nickel	Black	Nickel	Black
3 Way	717-0301	719-0301	723-0301	725-0301
4 Way	717-0401	719-0401	723-0401	725-0401
5 Way	717-0501	719-0501	723-0501	725-0501



### Series: Panel Sockets

- ▶ Available with Silver or Gold Contacts
- ▶ Nickel or Black shell
- ▶ 3, 4 and 5 pin configuration

Part Number Selection	Silver Contacts		Gold Contacts	
	Nickel	Black	Nickel	Black
3 Way	716-0301	718-0301	722-0301	724-0301
4 Way	716-0401	718-0401	722-0401	724-0401
5 Way	716-0501	718-0501	722-0501	724-0501



## PROFESSIONAL 1/4" JACK CONNECTORS

A range of professional 1/4" jack connectors with several unique constructional advantages. The plugs feature solid centre cores of malleable copper, making them less susceptible to brittle fracture as in brass counterparts; the generous solder contact is riveted to the ground contact before final assembly of the centre pin, making the connector more reliable than equivalents with single riveting. The plugs feature a unique double position cable retention collet that provides equal cable clamping on both thick and thin cables. The metal back shells are available in black chrome or nickel finish.

Part Number Selection	Solid		Copper Tip	
	Nickel	Black	Nickel	Black
2 Pole	326-0000	323-0100	329-0000	329-0100
3 Pole	327-0000	325-0100	329-0001	329-0101



## PROFESSIONAL PHONO CONNECTORS

### Series: Hollow Pin Phono Plugs

A range of professional phono plugs manufactured from turned brass, with hollow centre pin contacts. The ground contact features a patented 'T' slot design which provides a positive contact, even on undersized phono sockets. The range features spring cable strain relief, and the plugs can be fitted with colour coding rings for identification. Accepts cables up to 5.5mm diameter.

Part Number Selection	Nickel	Gold	Black Chrome
	Plain (No ID Ring)	330-0000	331-0000
Colour Coded Black	330-0100	331-0100	332-0100
Colour Coded Red	330-0500	331-0500	332-0500



**Series: Aluminium Anodised Back Shell**

A range of professional phono plugs featuring colour coded anodised aluminium back shells. The solid centre pin features a generous solder bucket. A robust cable clamp provides additional strength and accommodates large diameter cables. The contact insulator is manufactured from PTFE, providing a much improved dielectric (and the capacity to withstand soldering temperatures without distortion compared to cheaper polyethylene insulators). Accepts cables up to 5.5mm diameter.

**Part Number Selection**

Black	346-0100	Red	346-0500
Blue	346-0200	Yellow	346-0700

**Series: Solid Pin Phono Plugs**

A professional phono plug range with solid centre pin contacts which feature improved solder bucket termination. The ground contact features a patented 'T' slot design which provides a positive contact, even on undersized phono sockets. All versions feature spring cable strain relief.

**Part Number Selection**

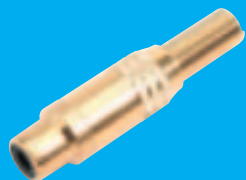
	Nickel	Gold	Black Chrome
Plain (No ID Ring)	333-0000	334-0000	335-0000
Colour Coded Black	333-0100	334-0100	335-0100
Colour Coded Red	333-0500	334-0500	335-0500

**Series: High End Shrouded Ground Contact**

A range of professional phono plugs featuring a fully shrouded ground contact, offering two advantages – full screening against EMI/RFI plus mechanical protection of the ground contact. The solid centre pin features a generous solder bucket. A robust cable clamp provides additional strength and accommodates large diameter cables. The contact insulator is manufactured from PTFE, providing a much improved dielectric. The contact areas are 0.5u gold-plated.

**Part Number Selection**

	Gold Cap & Spring	Black Chrome Cap & Spring
Plain (No ID Ring)	320-0000	321-0000
Colour Coded Red	320-0500	321-0500
Colour Coded White	320-0600	321-0600

**Series: Professional Phono Line Sockets**

A range of professional phono line sockets manufactured from turned brass. All versions feature spring cable strain relief.

**Part Number Selection**

	Nickel	Gold	Black Chrome
Plain (No ID Ring)	340-0000	341-0000	342-0000
Colour Coded Black	340-0100	341-0100	342-0100
Colour Coded Red	340-0500	341-0500	342-0500

**Series: Professional Phono Panel Socket**

A turned brass single nut fixing panel socket, available in either red or black insulator material for identification purposes.

**Part Number Selection**

	Nickel	Gold
Black	431-0100	432-0100
Red	431-0500	432-0500

**MIDI CONNECTORS****Series: Cable Plug**

Part Number Selection	Nickel	Black
5 Way 45°	610-0500	611-0500





**Series: Flanged Panel Socket**

Part Number Selection	Nickel	Black
5 Way 45°	630-0500	631-0500



**Series: Professional Circular Panel Socket**

Part Number Selection	Nickel	Black
5 Way 45°	650-0500	651-0500



**SCREENED DIN CONNECTORS**

**NEW for Series: Right Angled DIN Connectors**

- ▶ Available in 3 to 8 pin configuration
- ▶ Cable exit 90° to plug insertion
- ▶ DIN standard connector

Part Number Selection	Nickel	Black	Part Number Selection	Nickel	Black
3 Way	620-0300		6 Way	620-0600	
4 Way	620-0400		7 Way	620-0700	
5 Way 45°	620-0500		8 Way	620-0800	
5 Way 60°	620-0510				

A fully screened robust range of DIN connectors for use in instrumentation and audio applications. Available in two finishes: bright nickel and non-reflective electrically conductive matt black. Robust construction incorporating cable grip and strain relief. Manufactured to DIN 41524, 45322, 45326, 45327 and 45329.

**Series: Standard Plug**

- ▶ Nickel or Black Shell
- ▶ 3 to 8 Pin Configuration

Part Number Selection	Nickel	Black	Part Number Selection	Nickel	Black
3 Way	610-0300	611-0300	5 Way Dice	610-0520	611-0520
4 Way	610-0400	611-0400	6 Way	610-0600	611-0600
5 Way 45°	610-0500	611-0500	7 Way	610-0700	611-0700
5 Way 60°	610-0510	611-0510	8 Way	610-0800	611-0800



**Series: Lockable Plug**

- ▶ Nickel or Black Shell
- ▶ Latching
- ▶ 3 to 8 Pin Configuration

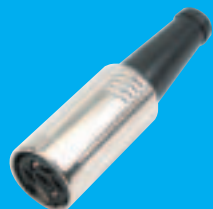
Part Number Selection	Nickel	Black	Part Number Selection	Nickel	Black
3 Way	590-0300	591-0300	5 Way Dice	590-0520	591-0520
4 Way	590-0400	591-0400	6 Way	590-0600	591-0600
5 Way 45°	590-0500	591-0500	7 Way	590-0700	591-0700
5 Way 60°	590-0510	591-0510	8 Way	590-0800	591-0800



**Series: Line Socket**

- ▶ Nickel or Black Shell
- ▶ 3 to 7 Pin Configuration

Part Number Selection	Nickel	Black	Part Number Selection	Nickel	Black
3 Way	600-0300	601-0300	5 Way Dice	600-0520	601-0520
4 Way	600-0400	601-0400	6 Way	600-0600	601-0600
5 Way 45°	600-0500	601-0500	7 Way	600-0700	601-0700
5 Way 60°	600-0510	601-0510			





**Series: Professional Circular PCB Mounting**

A range of sockets with straight PCB pins. The sockets can be secured to a panel by means of a hexagonal nut.

Part Number Selection	Nickel	Black		Nickel	Black
3 Way	690-0300	691-0300	6 Way	690-0600	691-0600
4 Way	690-0400	691-0400	7 Way	690-0700	691-0700
5 Way 45°	690-0500	691-0500	8 Way	690-0800	691-0800
5 Way 60°	690-0510	691-0510	Hexagon Nut	650-0300-3	
5 Way Dice	690-0520	691-0520			



**Series: Flanged Panel Socket**

A flange mounted panel socket which mates with all standard and lockable plugs.

Part Number Selection	Nickel	Black		Nickel	Black
3 Way	630-0300	631-0300	5 Way Dice	630-0520	631-0520
4 Way	630-0400	631-0400	6 Way	630-0600	631-0600
5 Way 45°	630-0500	631-0500	7 Way	630-0700	631-0700
5 Way 60°	630-0510	631-0510	8 Way	630-0800	631-0800



**Series: Professional Circular Panel Socket**

A range of professional mounting sockets, designed for panel mounting via a single hexagonal turned brass nut. These sockets incorporate an anti-rotational locating spigot, and mate with all standard lockable plugs.

Part Number Selection	Nickel	Black		Nickel	Black
3 Way	650-0300	651-0300	5 Way Dice	650-0520	651-0520
4 Way	650-0400	651-0400	6 Way	650-0600	651-0600
5 Way 45°	650-0500	651-0500	7 Way	650-0700	651-0700
5 Way 60°	650-0510	651-0510	8 Way	650-0800	651-0800

**SCREENED DIN SPEAKER CONNECTORS**

A complete range of latching and standard speaker connectors available in bright nickel or non-reflective matt black finishes.

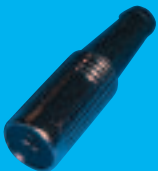
**Series: 2-Way Speaker Plug**

Part Number Selection	Nickel
Standard	622-0000
Lockable	638-0000



**Series: 2 Way Speaker Line Socket**

Part Number Selection	Nickel
Standard	629-0000



**Series: 2 Way Speaker Panel Socket**

Part Number Selection	Nickel		
Standard	625-0000	Standard Switched	627-0000
Lockable	642-0000	Standard Switched Reversible	626-0000





## RING LOCK DIN CONNECTORS

A fully screened robust range of DIN connectors for use in instrumentation and audio applications. Available in bright nickel finish with an interchangeable black plastic locking ring.

### Series: Standard Plug

Part Number Selection			
3 Way	592-0301	6 Way	592-0601
4 Way	592-0401	7 Way	592-0701
5 Way 45°	592-0501	8 Way	592-0801
5 Way 60°	592-0511		



### Series: Chassis Socket

Part Number Selection			
3 Way	593-0300	6 Way	593-0600
4 Way	593-0400	7 Way	593-0700
5 Way 45°	593-0500	8 Way	593-0800
5 Way 60°	593-0510		



### Series: Colour Coding Rings for Ring Lock DIN Connectors

Part Number Selection	Locking Ring (Plug)	Identification Ring (Socket)
	Blue	592-0002
	Green	592-0004
	Red	592-0005
	White	592-0006
	Yellow	592-0007
	Mixed (4x6 colours)	592-0000

## INSULATED DIN CONNECTORS

Quality DIN connectors with insulated housings conforming to DIN 41524, 45322, 45326, 45327 and 45329. This range of connectors is used extensively in audio applications and offers ease of assembly and extremely good contact performance.

### Series: Plug

Part Number Selection	Round Cable		Round Cable
3 Way	660-0300	5 Way Dice	660-0520
4 Way	660-0400	6 Way	660-0600
5 Way 45°	660-0500	7 Way	660-0700
5 Way 60°	660-0510	8 Way	660-0800



### Series: 90° PCB DIN Sockets

Part Number Selection	Round Cable		Round Cable
3 Way	671-0300	5 Way Dice I	670-0530
4 Way	671-0400	6 Way	671-0600
5 Way 45°	671-0500	7 Way	671-0700
5 Way 60°	671-0510	8 Way	671-0800
5 Way Dice	671-0520		



## INSULATED SPEAKER CONNECTORS

### Series: Insulated Speaker Plug

Part Number Selection	Round Cable
With Cable Clamp	656-0000





**Series: Insulated Speaker Line Socket**

Part Number Selection	Nickel
With Cable Clamp	658-0000



**Series: Phono Connector Economy**

Part Number Selection	Nickel
Black	425-0100
Red	425-0500



**Series: Standard Plug with Insulated Housing**

Part Number Selection	Hollow Pin	Solid Pin
Black (Nickel)	413-0100	415-0100
Red (Nickel)	413-0500	415-0500
Black (Gold)		416-0100
Red (Gold)		416-0500



**Series: Standard Socket with Insulated Housing**

Part Number Selection	Nickel
Black	433-0100
Red	433-0500

**AUDIO / MUSICAL INSTRUMENTATION CABLE AND CABLE**

Deltron Emcon offer both audio cable, and audio cable assemblies using professional cable provided by Gotham Audio Cables. Featuring the unique 'Double Reussen Shielding' which is two layers of copper wire on the conductors, results in superb flexibility and the best possible RF rejection up to 130dB.

Deltron Emcon have access to the complete Gotham Audio Cables range, and are also capable of providing volume bespoke cable assemblies.



**4MM SINGLE POLE CONNECTORS AND ACCESSORIES**

A range of 4mm products offering many unique features and manufactured to a very high standard. This range caters for a broad range of instrumentation and speaker applications. All contact material is nickel plated unless otherwise stated.

**Series: Standard Plug**

- ▶ Solder Bucket Termination
- ▶ Stainless Steel Contact Spring
- ▶ Screw-on acetal moulding
- ▶ Rated at 10 Amps

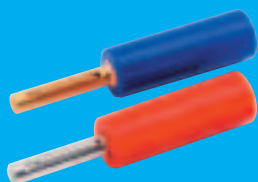
Part Number Selection	Nickel Plated		Gold Plated		
Black	550-0100	Green	550-0400	White	550-0600
Blue	550-0200	Red	550-0500	Yellow	550-0700
Brown	550-0300				



**Series: Standard Plug with Large Solder Bucket Termination**

- ▶ Large Solder Bucket Connection
- ▶ Supplied with Insulating Cover to Accept
- ▶ Cable up to 7.1mm Diameter
- ▶ Rated at 10 Amps
- ▶ Accepts Conductors up to 5.5mm Diameter
- ▶ Stainless Steel Contact Spring Incorporated
- ▶ 0.5 Micron Gold Plating for Reduced Contact Resistance

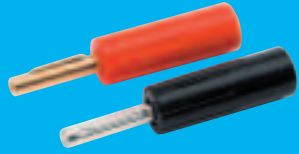
Part Number Selection	Nickel Plated	Gold Plated	Nickel Plated	Gold Plated	
Black	579-0100	580-0100	Red	579-0500	580-0500
Blue	579-0200	580-0200	White	579-0600	580-0600
Brown	579-0300	580-0300	Yellow	579-0700	580-0700
Green	579-0400	580-0400			





Plugs with order codes 583 and 584 feature solder, screw or crimp termination.

Part Number Selection	Nickel Plated	Black Plated
Black	583-0100	584-0100
Red	583-0500	584-0500



**Series: Triple Contact Plug**

- ▶ Screw Connection for the Lead Wire
- ▶ Accepts Cables to 7.1mm Diameter
- ▶ Rated at 10 Amps
- ▶ Screw-on Rigid Acetal Moulding
- ▶ Accepts Conductor to 3.5mm Diameter

Part Number Selection			
Black	557-0100	Red	557-0500
Blue	557-0200	White	557-0600
Brown	557-0300	Yellow	557-0700
Green	557-0400		



**Series: Stackable Plug**

- ▶ Screw Connection for the Lead Wire
- ▶ Rated at 10 Amps
- ▶ Push-on Pliable PVC Moulding

Part Number Selection			
Black	553-0100	Red	553-0500
Blue	553-0200	White	553-0600
Brown	553-0300	Yellow	553-0700
Green	553-0400		



**Series: Bunch Pin Side Stackable Plug**

- ▶ Screw Connection for the Lead Wire
- ▶ Rated at 20 Amps
- ▶ Push-on Pliable PVC Moulding

Part Number Selection			
Black	555-0100	Red	555-0500
Blue	555-0200	White	555-0600
Brown	555-0300	Yellow	555-0700
Green	555-0400		



**Series: 4mm Audio Point**

- ▶ High Quality Audio Plug
- ▶ Connection is made by a Knurled Screw Clamp
- ▶ Designed primarily for use in the Audio Industry for Terminating Heavy-Duty Speaker Cable, and Inter-Connection between Speaker and Amplifier
- ▶ Cross Hole to Accept Cable to 7.5mm Diameter and 4mm Plug in the Clamp Screw
- ▶ Supplied in Gold Plated Finish

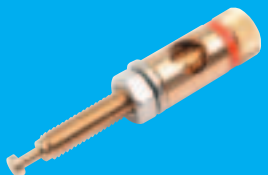
Part Number Selection	
Black	576-0100
Red	576-0500



**Series: Rear Speaker Coupling**

- ▶ Large Cable Entry Hole which Accepts Cable up to 7.5mm Diameter
- ▶ Speaker Connection can be Terminated by either a 4mm hole in the clamp screw, or clamped through the cross hole via the knurled screw
- ▶ Ideally Suited for Rear Termination of Speakers
- ▶ Gold Plated Finish

Part Number Selection	
Black	577-0100
Red	577-0500





**Series: Stud Mounting Bunch Pin Plug**

- ▶ Suitable for PCB test points and shunt terminals
- ▶ Supplied with 2 fixing nuts (M4)
- ▶ Nickel plated plug
- ▶ Current rating 20 Amps

**Part Number Selection**

Stud Mounting Bunch Pin Plug 559-0010



**Series: Panel Mounting Socket**

- ▶ Available with solder tag or solder bucket connections
- ▶ Supplied with panel mounting retention nut
- ▶ Rated at 10 Amps

**Part Number Selection**

Part Number Selection	Solder Terminal	Solder Bucket		Solder Terminal	Solder Bucket
Black	551-0100	563-0100	Red	551-0500	563-0500
Blue	551-0200	563-0200	White	551-0600	563-0600
Brown	551-0300	563-0300	Yellow	551-0700	563-0700
Green	551-0400	563-0400			

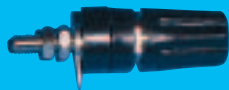


**Series: 90° PCB Mounted Insulated Socket – 4mm Hole Single and Double**

- ▶ For direct mounting onto PCB's
- ▶ Rated at 10 Amps
- ▶ Grooves in the outer housing to provide side stacking alignment

**Part Number Selection**

Part Number Selection	Single	Double		Single	Double
Black	571-0100	572-0100	Red	571-0500	572-0500
Blue	571-0200	572-0200	White	571-0600	572-0600
Brown	571-0300		Yellow	571-0700	
Green	571-0400	572-0400			



**Series: Insulated Terminal**

- ▶ Incorporates a 4mm socket and rigid acetal moulding
- ▶ Rated at 30 Amps
- ▶ Terminal has a thread termination

**Part Number Selection**

Part Number Selection	Single	Single
Black	552-0100	Red 552-0500
Blue	552-0200	White 552-0600
Green	552-0400	Yellow 552-0700



**Series: Spade Adaptor**

- ▶ Brass nickel plated adaptor accepts 4mm plug
- ▶ Rated at 20 Amps
- ▶ Accommodates terminal posts up to 8.3mm diameter

**Part Number Selection**

Black 536-0100  
Red 536-0500



**Series: Spade Terminal**

- ▶ Brass nickel plated
- ▶ Accommodates a terminal diameter up to 8.3mm
- ▶ Rated at 20 Amps
- ▶ Rigid acetal moulding which clamps the lead wire

**Part Number Selection**

Part Number Selection	Single	Single
Black	562-0100	Red 562-0500
Blue	562-0200	White 562-0600
Brown	562-0300	Yellow 562-0700
Green	562-0400	



**Series: Terminal Binding Post**

- ▶ Manufactured from nickel plated brass
- ▶ Rated at 30 Amps
- ▶ Complete with non-captive 2BA nut

**Part Number Selection**

Terminal Binding Post 351-0000

**Series: Miniature Probe**

- ▶ Ideally suited to high density PCB's, including integrated circuit pins and similar items

**Part Number Selection**

Black	575-0101	Red	575-0501
Blue	575-0201	Yellow	575-0701
Green	575-0401		

**Series: Standard Crocodile Clip**

- ▶ Steel nickel plated
- ▶ Rear entry will accept 4mm plugs
- ▶ Rated at 5 Amps
- ▶ Allows fine wires to be held securely by an undercut clamping screw
- ▶ Insulating covers available separately

**Part Number Selection**

Crocodile Clip	303-0000
Insulating Cover Black	302-0100
Insulating Cover Red	302-0500

**Series: Large Insulated Crocodile Clip**

- ▶ Shrouded jaws
- ▶ Rated at 10 Amps
- ▶ Accepts 4mm plug or wire clamped by integral screw

**Part Number Selection**

Black	307-0100
Red	307-0500

**Series: Large Crocodile Clip**

- ▶ Bright nickel plated over steel
- ▶ Insulating covers available separately
- ▶ Rated at 20 Amps

**Part Number Selection**

Crocodile Clip	304-0000
Insulating Cover Black	310-0100
Insulating Cover Red	310-0500

**DIE CAST BOXES****Series: Die Cast Boxes**

Deltron Emcon offer an extensive range of aluminium die cast boxes supplied with close fitting lids, providing excellent screening against EMI/RFI and are therefore ideal housings for electronic components and circuits.

- ▶ Available in three finishes - plain, powder coated and nylon coated
- ▶ Flanged range - with pre-drilled external mounting flanges
- ▶ IP66 sealed range

Deltron Emcon offer a custom solution service and can provide quotations for any type of machining and finishing which may be required by end-user customers.

Please ask for a copy of our Die Cast Box brochure.





MEDIA PATCHING PRODUCTS GUIDE



PRODUCTION TOOLING GUIDE



EMC FILTERS & COMPONENTS GUIDE

**DELTRON AUSTRIA**

Deltron Austria GmbH  
**E-Mail:** office@deltron-austria.at  
**Web:** www.deltron-austria.com

**DELTRON DENMARK**

Deltron Conelec AS  
**E-Mail:** sales@conelec.dk  
**Web:** www.deltron-conelec.dk

**DELTRON FRANCE**

Deltron EuroIndustrie SA  
**E-Mail:** sales@deltron-euroindustrie.fr  
**Web:** www.deltron-euroindustrie.com

**DELTRON FRANCE**

Deltron EMC S.A.R.L.  
**E-Mail:** sales@deltron-emc.fr  
**Web:** www.deltron-emc.fr

**DELTRON GERMANY**

Deltron Components GmbH  
**E-Mail:** info@deltron-components.de  
**Web:** www.deltron-components.de

**DELTRON IRELAND**

Deltron UK Limited  
**E-Mail:** irishsales@deltron-uk.com  
**Web:** www.deltron-uk.com

**DELTRON ITALY**

Deltron Euroind Srl  
**E-Mail:** sales@deltron-euroind.it  
**Web:** www.deltron-euroind.it

**DELTRON NETHERLANDS**

Deltron Radikor BV  
**E-Mail:** sales@deltron-radikor.nl  
**Web:** www.deltron-radikor.nl

**DELTRON NORWAY**

Deltron Conelec AS  
**E-Mail:** sales@deltron-conelec.no  
**Web:** www.deltron-norway.no

**DELTRON SWEDEN**

Deltron Freber AB  
**E-Mail:** info@deltron-freber.se  
**Web:** www.deltron-freber.com

**DELTRON UK**

Deltron UK Limited  
**E-Mail:** sales@deltron-uk.com  
**Web:** www.deltron-uk.com

**COMPONENTS, CONNECTORS & CABLING GUIDE**



**Deltron Emcon Limited**

Deltron Emcon House  
Hargreaves Way  
Sawcliffe Industrial Park  
Scunthorpe  
North Lincolnshire  
DN15 8RF

**Phone:** 44-1724-273200  
**Fax:** 44-1724-270230  
**E-Mail:** sales@deltron-emcon.com  
**Web:** www.deltron-emcon.com



**Group Head Office**

Deltron Electronics plc  
Group Head Office  
Suffolk House  
Fordham Road  
Newmarket  
Suffolk  
CB8 7AA

**Phone:** 44-1638-561156  
**Fax:** 44-1638-661455  
**E-Mail:** enquiries@deltron-electronics.com  
**Web:** www.deltron-electronics.com



Certified No. FM 24398

## X-ON Electronics

Largest Supplier of Electrical and Electronic Components

*Click to view similar products for [Test Plugs & Test Jacks](#) category:*

*Click to view products by [Deltron](#) manufacturer:*

Other Similar products are found below :

[579-0400](#) [66000-7](#) [R644543000](#) [R921923000](#) [R921930000](#) [R941344000](#) [R948161000](#) [R999351000](#) [1408-4](#) [1533-1](#) [174-R825B-EX](#)  
[NYS508-BU](#) [NYS508-O](#) [1680](#) [174-R819B-EX](#) [R644543003](#) [R644543020](#) [R644543021](#) [R921926000](#) [R921931000](#) [R921932000](#)  
[R921934000](#) [R929991000](#) [R941460000](#) [R941461000](#) [R941463600](#) [R941920600](#) [R948160000](#) [31B-2-RED](#) [032-0016-023](#) [105-1106-001](#)  
[108-1000-106](#) [108-2301-621](#) [111-0707-001](#) [66001-9](#) [7013](#) [1395080-1](#) [930166100](#) [NYS508-GR](#) [NYS508-V](#) [NYS508-W](#) [NYS508-Y](#)  
[NYS511-R](#) [BP30-2BR10-B PKG](#) [BP30-10-WT](#) [BP30-2BR-B PKG](#) [BP30Y-1 PKG](#) [R941049000](#) [R941340000](#) [R948141029](#)