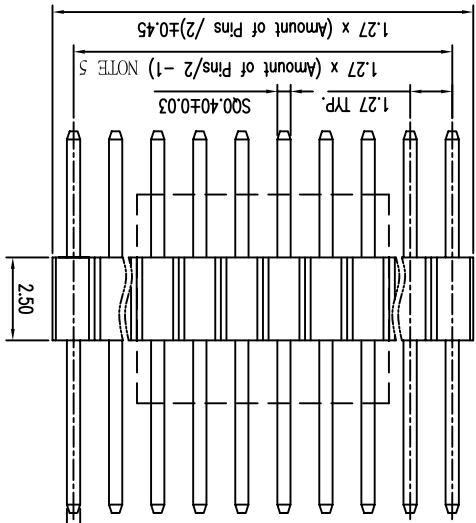
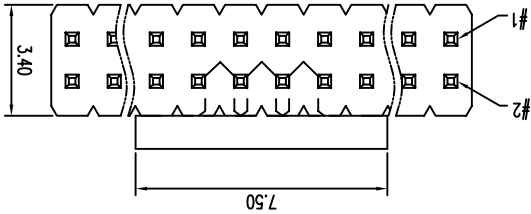
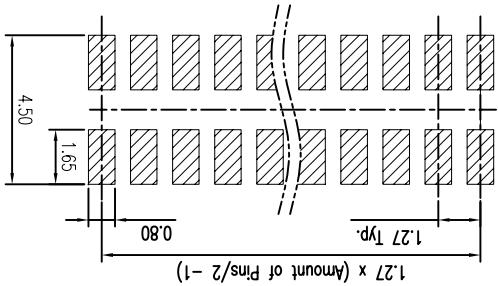
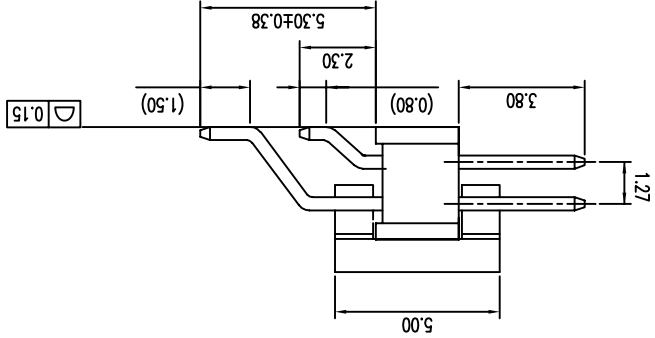


Recommended P.C.B. Layout  
Layout tolerance = ± 0.05 mm



SQ.0.40±0.03



NOTE:  
 1. MATERIAL, HOUSING: HIGH TEMP PLASTIC, UL94-V0, BLACK  
 TERMINAL: COPPER ALLOY, SQ=0.40±0.03MM  
 2. FINISH:  
 TERMINAL: GOLD AT CONTACT, G/F OVER 1um(40u"MIN IN OVER ALL  
 PRODUCT SPEC: GS-12-629  
 PACKING SPEC: GS-14-1420  
 4. THE HSG. WILL WITHSTAND EXPOSURE TO 260°C  
 PEAK TEMP. FOR 10 SEC. IN A CONVECTION INFRA-RED  
 OR VAPOR PHASE REFLOW OVEN.  
 5. THE TOLERANCE OF THIS DIMENSION  
 2-60 PINS ± 0.20  
 62-98 PINS ± 0.30

6. PRODUCT NUMBERING:  
 20021122 - 0 0 0 XX X LF  
 LEAD FREE  
 PLATING:  
 1: GOLD FLASH ALL OVER  
 4: 0.25um(10U" GOLD AT CONTACT  
 8: 0.76um(30U" GOLD AT CONTACT  
 9: 1u" GOLD OVER 30u" PAIN! AT CONTACT  
 PACKING  
 T: TUBE  
 D: TUBE + CAP  
 C: REEL + CAP  
 PIN COUNT  
 06,08,10,..... ( 8-98 EVERY EVEN PIN )

mat'l. code	ISO1302	tolerance unless otherwise specified	projection	product family	MINITEK
lfr	ecn no	dr	date	tolerances unless otherwise specified	title
A	T09-1117	S.LIN	09/15/09	angles	1.27X1.27MM BTB HEADER
B	T09-1155	S.LIN	12/03/09	angles	UNSHROUDED SMT
C	T10-0014	S.LIN	01/28/10	angles	scale 5:1
D	T11-0029	S.LIN	06/14/11	dr	dwg no
E	EX-N-01036	ZK	01/16/12	engr	20021122
F	EX-N-010619	ZK	03/12/12	chr	Product Customer Drawing
G	EX-N-16465	TM	12/06/13	ppp	Product Customer Drawing
sheet revision	g	sheet	1	index	



## X-ON Electronics

Largest Supplier of Electrical and Electronic Components

*Click to view similar products for [Headers & Wire Housings](#) category:*

*Click to view products by [FCT Electronics](#) manufacturer:*

Other Similar products are found below :

[95000-104TRLF](#) [10135584-644402LF](#) [DF62W-EP2022PCA](#) [95000-106TRLF](#) [DF62W-2022SCA](#) [DF62W-EP2022PC](#) [2203348](#) [DF62W-2022SC](#) [1084018](#) [1029039](#) [1084017](#) [802-10-012-10-002000](#) [1112640](#) [1112639](#) [891-007-9SS-BST1T](#) [000-34000](#) [0008550134](#) [0009482033](#) [0009507031](#) [57102-F02-18ULF](#) [57102-S06-03LF](#) [57202-S52-04LF](#) [PCN6-15S-2.5E](#) [0039019024](#) [58102-G61-06LF](#) [582553-1](#) [0009485154](#) [0009508121](#) [0022285053](#) [0050291907](#) [018731A](#) [LY20-4P-DT1-P1E-BR](#) [02.125.8002.8](#) [60101931](#) [60598-1 \(Cut Strip\)](#) [M1625-3R/100](#) [61062-3](#) [61082-181009](#) [CSU011177004](#) [636-1427](#) [638009-1](#) [641938-9](#) [641991-4](#) [644168-1](#) [644827-2](#) [647662-1](#) [65039-019ELF](#) [65692-001LF](#) [65781-018](#) [65781-047](#)