

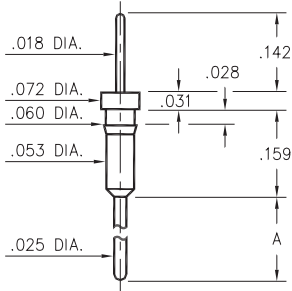
MALE PCB PINS

PRINTED CIRCUIT PINS

3409

3409-X-00-XX-00-00-03-0

Press-fit in .057 mounting hole

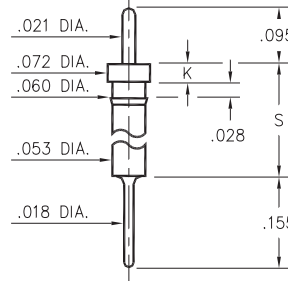


| Basic Part Number | Pin Length A |
|-------------------|--------------|
| 3409-1 | .210 |
| 3409-2 | .420 |

0315

0315-0-00-XX-00-00-03-0

Press-fit in .057 mounting hole
Pin material is Phosphor Bronze 544 (B2)

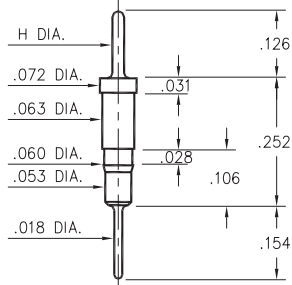


| Basic Part Number | Head Height K | Standoff Height S |
|-------------------|---------------|-------------------|
| 0315-0 | .030 | .190 |
| 0315-1 | .040 | .430 |

5503/5509

550X-X-00-XX-00-00-03-0

Press-fit in .057 mounting hole

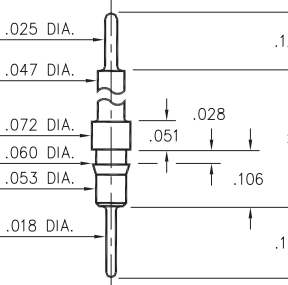


| Basic Part Number | Pin Diameter H |
|-------------------|----------------|
| 5503-0 | .025 |
| 5509-0 | .018 |

5504/5505

550X-0-00-XX-00-00-03-0

Press-fit in .057 mounting hole

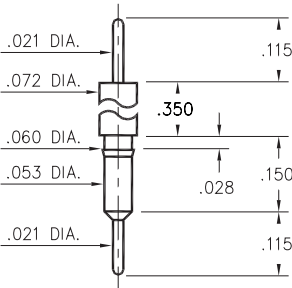


| Basic Part Number | Standoff Height S |
|-------------------|-------------------|
| 5504-0 | .331 |
| 5505-0 | .606 |

3406

3406-0-00-XX-00-00-03-0

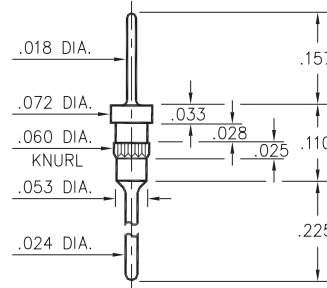
Press-fit in .057 mounting hole



5011

5011-0-00-XX-00-00-03-0

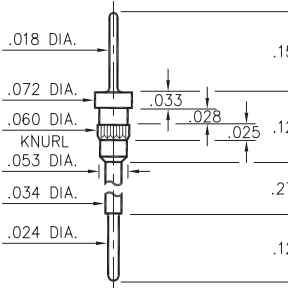
Press-fit in .057 mounting hole



5113

5113-0-00-XX-00-00-03-0

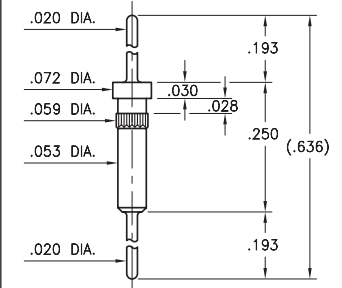
Press-fit in .057 mounting hole



3900

3900-0-00-15-00-00-03-0

Press-fit in .057 mounting hole



SPECIFICATIONS:

Pin Material: Brass Alloy 360, 1/2 Hard
(Except where noted)

Dimensions: Inches

Tolerances On: Lengths: ±.005
Diameters: ±.002
Angles: ±2°



ORDER CODE: XXXX - X - 00 - XX - 00 - 00 - 03 - 0

BASIC PART #

SPECIFY PIN FINISH:

- 01 200 μ" TIN/LEAD OVER NICKEL
- ◆ 80 200 μ" TIN OVER NICKEL (RoHS)
- ◆ 15 10 μ" GOLD OVER NICKEL (RoHS)
- ◆ 21 20 μ" GOLD OVER NICKEL (RoHS)
- ◆ 34 50 μ" GOLD OVER NICKEL (RoHS)



X-ON Electronics

Largest Supplier of Electrical and Electronic Components

Click to view similar products for [Terminals](#) category:

Click to view products by [Mill-Max](#) manufacturer:

Other Similar products are found below :

[HT-13-10](#) [71M-250-32-NB](#) [01-2065-1-0216](#) [00581P0075](#) [M10-10RX](#) [M10BCK](#) [60205-1](#) [604200-1](#) [60598-1-CUT-TAPE](#) [60617-1-C](#) [60873-1](#) [M14-516R/SK](#) [M14-6RSX](#) [M18-10FLX](#) [M18-8FBX](#) [M18-8R/LX](#) [M18BCK](#) [61314-6-C](#) [61-S](#) [61-SN-A](#) [62149-1](#) [62-NBM-A](#) [63-S](#) [640179-1](#) [640917-2-CUT-TAPE](#) [6501550002](#) [66107-2-C](#) [66107-4-C](#) [696683-1](#) [696834-1](#) [696861-1](#) [696931-1](#) [696999-1](#) [M8-516RK](#) [M86700006](#) [MA250DMFMX-A](#) [701-2007](#) [701-2307](#) [701-7761-03](#) [70F-110-32-PB](#) [718-N-A](#) [71M-187-20-NBL](#) [71M-250-32-NBL](#) [72F-187-20-NBL](#) [72M-250-32-NBL](#) [7310](#) [73F-250-32](#) [73F-250-32-NBL](#) [73F-250-32-NL](#) [F-1M](#)