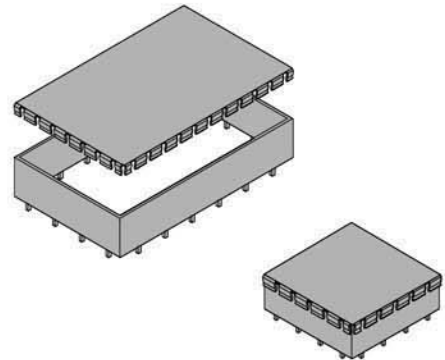


# PFL Series: PCB Frame & Fingered Lid

Standard and custom PCB mounting enclosures offering individuality and functionality, ideally suited to board level screening applications where good RFI/EMI attenuation and accessibility are required.

- ◆ **Removable Fingered Lid**  
giving easy access and excellent attenuation
- ◆ **PCB Mounting Pins**  
bright acid tinned for solderability
- ◆ **Locking Pins (optional)**  
for positive placement & retention (see page 7)  
ideal for reflow soldering applications
- ◆ **Internal Dividers (optional)**  
for discrete screening within the frame (see page 7)
- ◆ **Custom Sizes**  
can be manufactured without tooling charges  
making prototypes and low volumes viable
- ◆ **Additional Features**  
holes, brackets, cut outs, lid captivation, etc., can be incorporated during manufacture (see back page)
- ◆ **Alternative Materials/Finishes**  
copper, brass, tinplate, nickel, nickel plate



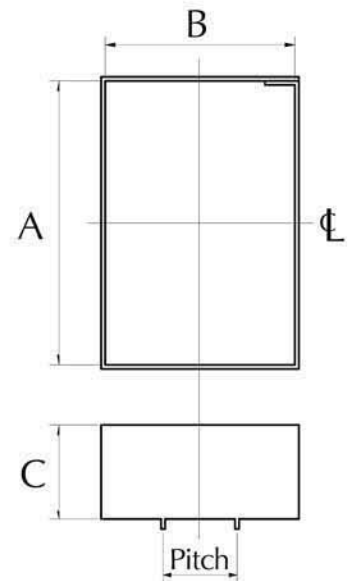
## Specification

<b>Material:</b>	Bright Mild Steel BS EN 10130 DC01
<b>Frames:</b>	20swg (0.914mm)
<b>Lids:</b>	24swg (0.559mm)
<b>Finish:</b>	Bright Acid Tin: Good Commercial Grade
<b>Surface resistivity:</b>	$20 \times 10^{-6} \Omega$ per square
<b>Conductivity:</b>	$5 \times 10^4 S$ (mho)
<b>Tolerance:</b>	+/- 0.25mm (general) +/- 0.10mm (PCB pin pitch)
<b>Pin Size:</b>	1mm x 2.25mm

## STOCK SIZES - Internal & overall dimensions (mm)

Part No.	Dim. A	Dim. B	Dim. C	Nominal overall size including lid (excluding pins)	Number of Pins	Pin Pitch
PFL1T	20	20	10	25 x 25 x 11	4	C/L
PFL11T	25	25	10	30 x 30 x 11	4	C/L
PFL5T	30	30	15	35 x 35 x 16	8	10.5
PFL12T	40	40	15	45 x 45 x 16	8	20
PFL2T	50	25	15	55 x 30 x 16	10	10.5
PFL6T	50	50	15	55 x 55 x 16	8	20
PFL9T	75	50	15	80 x 55 x 16	12	20
PFL3T	75	50	25	80 x 55 x 26	12	20
PFL7T	75	75	25	80 x 80 x 26	16	20
PFL4T	100	50	25	105 x 55 x 26	12	20
PFL8T	125	75	25	130 x 80 x 26	20	20
PFL10T	160	100	35	165 x 105 x 36	24	20

**NOTE:** A4 dimensioned drawings for each part are available on request.



Telephone: 020-8365 2520  
Fax: 020-8365 3727

**PERANCEA LTD**

Page 3

Email: sales@perancea.com  
Website: www.perancea.com

*In line with our policy of continuous improvement we reserve the right to make design or product alterations without prior notice.*

## **X-ON Electronics**

Largest Supplier of Electrical and Electronic Components

*Click to view similar products for [perancea](#) manufacturer:*

Other Similar products are found below :

[FFL4T](#) [FFL3T](#) [FFL2T](#) [SS232/20-5PK](#) [PCMC8](#) [CFL2T](#) [01BBN08](#) [PFL2T](#) [PCMC1](#) [01CBP76](#) [01CBP41](#) [01BBN11](#)