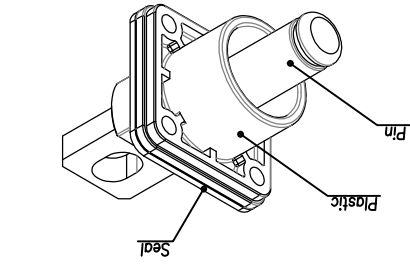


THIS DRAWING IS SUPPLIED FOR INFORMATION ONLY. DESIGN FEATURES, SPECIFICATIONS AND PERFORMANCE DATA SHOWN HEREON ARE THE PROPERTY OF THE AMPHENOL CORPORATION. NO RIGHTS OF REPRODUCTION ARE IMPLIED. ALL DIMENSIONS ARE SUBJECT TO NORMAL MANUFACTURING VARIATIONS.

CUSTOMER DRAWING

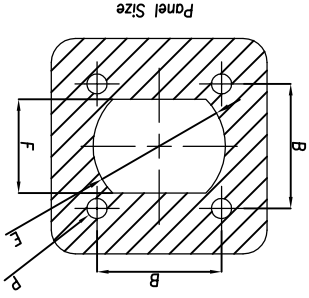
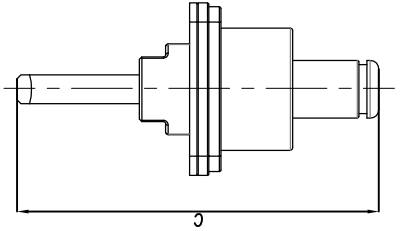
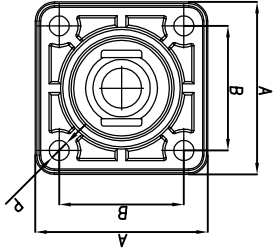
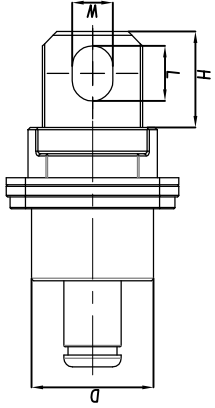


Ordering Example:

Radlok
Radlok Pin Size: ϕ 8.0mm
Radlok Pin To Lug
Pating: 1 - Silver
2 - Tin
3 - Nickel
Feed Thru

RL 9 080 - 20 X - F1

Size	A	B	C	D	E	F	H	L	W	P	Current (A)	Ordering Number (XX-For Plating)		
(mm)	(mm)	(mm)	(mm)	(mm)	(mm)	(mm)	(mm)	(mm)	(mm)					
12.0	36.0	26.0	77.5	25.5	27.6	19.6	27.5	14.0	13.0	M4		400	RL9120-20X-F1	
10.0	33.0	24.0	70.0	23.0	25.6	17.6	24.0	12.5	10.5			300	RL9100-20X-F1	
8.0	30.0	21.0	62.5	19.6	22.1	15.6	22.5	10.0	8.5			200	RL9080-20X-F1	
5.7	25.0	17.0	53.6	15.2	14.5	12.4	16.0	7	6.3			120	RL9057-20X-F1	
3.6	21.0	14.0	46.7	11.9	12.5	10.3	13.5	5	4.2	M3		70	RL9036-20X-F1	
													1 Silver	
													2 Tin	
													3 Nickel	



REV	DESCRIPTION	DATE	BY	APPR
A	INITIAL RELEASE	01/26/14	DH	EC

AMPHENOL

第三角投影
HAND ANGLE PROJECTION
SHEET 1 OF 2
面数 幅面 A3
REV. A
比例 SCALE

签名 SIGNATURE
日期 DATE
01/26/2014
01/26/2014
01/26/2014

审核 CHECKED GX
批准 APPROVAL EC

制图 DRAWN DH
1) All dimensions are in metric(mm).
2) Tolerances are as follows:
0 PL DEC ±1.00
1 PL DEC ±0.50
2 PL DEC ±0.20
Angles ±1°

UNLESS OTHERWISE SPECIFIED

DMG NO: See Table
PART NAME: RADLOK® Feed Thru Pin To Lug
CUST PART #: N/A
A

Amphenol Technical Products International GZ

THIS DRAWING IS SUPPLIED FOR INFORMATION ONLY. DESIGN FEATURES, SPECIFICATIONS AND PERFORMANCE DATA SHOWN HEREON ARE THE PROPERTY OF THE AMPHENOL CORPORATION. NO RIGHTS OF REPRODUCTION ARE IMPLIED. ALL DIMENSIONS ARE SUBJECT TO NORMAL MANUFACTURING VARIATIONS.

CUSTOMER DRAWING

Table		
Plating Type	Size	Part number
Description		
Silver	3.6mm	AC-HA000385
	5.7mm	AC-HA000387
	8.0mm	AC-HA000388
Tin	3.6mm	AC-HA001024
	5.7mm	AC-HA001026
	8.0mm	AC-HA001027
Nickel	3.6mm	AC-HA000334
	5.7mm	AC-HA000336
	8.0mm	AC-HA000337
	12.0mm	AC-HA000340
	10.0mm	AC-HA000339
	12.0mm	RL9120-203-F1 M12
	10.0mm	RL9100-203-F1 M10
	8.0mm	RL9080-203-F1 M8
	5.7mm	RL9057-203-F1 M6
	3.6mm	RL9036-203-F1 M4
	12.0mm	AC-HA001030
	10.0mm	AC-HA001029
	8.0mm	RL9120-202-F1 M12
	10.0mm	RL9100-202-F1 M10
	8.0mm	RL9080-202-F1 M8
	5.7mm	RL9057-202-F1 M6
	3.6mm	RL9036-202-F1 M4
	12.0mm	AC-HA000391
	10.0mm	AC-HA000390
	8.0mm	RL9120-201-F1 M12
	10.0mm	RL9100-201-F1 M10
	8.0mm	RL9080-201-F1 M8
	5.7mm	RL9057-201-F1 M6
	3.6mm	RL9036-201-F1 M4

REVISIONS			
REV	DESCRIPTION	DATE	BY
A	INITIAL RELEASE	01/26/14	DH
EC			APP

AMPHENOL

第三角投影
HAND ANGLE PROJECTION

面 幅面
SHEET SIZE

2 OF 2
SCALE

比例

DATE

日期

UNLESS OTHERWISE SPECIFIED

1) All dimensions are in metric(mm).

2) Tolerances are as follows:

0 PL DEC ±1.00

1 PL DEC ±0.50

2 PL DEC ±0.20

Angles ±1°

批准 APPROVAL

EC

01/26/2014

审核 CHECKED

GX

01/26/2014

制图 DRAWN

DH

01/26/2014

批注 APPROVAL

EC

01/26/2014

客户 PART #:

N/A

客户 REV:

A

零件名称: PART NAME:

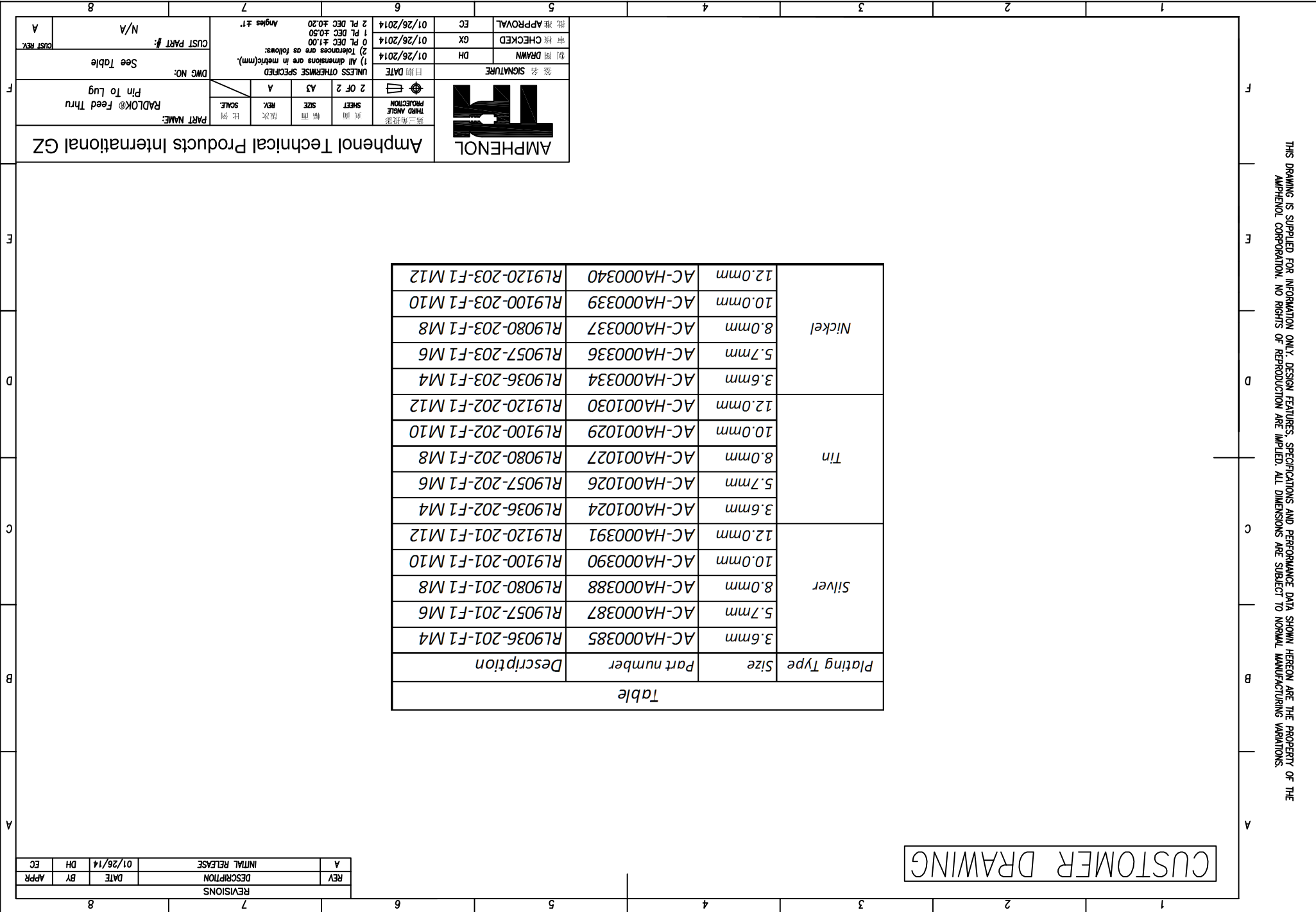
RADLOK® Feed Thru Pin To Lug

图号: DWG NO:

See Table

Amphenol Technical Products International GZ

Amphenol



X-ON Electronics

Largest Supplier of Electrical and Electronic Components

Click to view similar products for [amphenol manufacturer](#):

Other Similar products are found below :

[CTV06RGQF-17-52P](#) [CTVPS00RGF-23-6P-LC](#) [GC835TY2S](#) [CF-509621-29P](#) [BF8-1218-31SV-Y70](#) [TVP00RGW-23-6SA\(LC\)](#)
[RNJ27CI1535P014](#) [10-553998-139](#) [21-033388-031](#) [10-507142-843](#) [GTS06G-32-7S](#) [GTC06-36-78PX-023](#) [ACC02E28-51S-003-B30-LC](#)
[TV06RL-13-35SD-LC](#) [TV06RL-13-35SD](#) [TV06RL-13-98SD-LC](#) [TV06RL-13-98SD](#) [GTC08AF32-15SX-B30-LC](#) [GTC06G32-76PZ](#)
[TVP00RW-23-53AD](#) [100-007-213-002-001](#) [5M30-61](#) [FSPP-103-00-004](#) [360031](#) [10-037090-161](#) [10-541504-001](#) [10-580902-409](#) [TV97RW-](#)
[9-9S\(S15\)](#) [TVPS00RGF-9-5P-LC](#) [TVPS00RGF-9-5PA-LC](#) [TVP00RGQW-21-75P-LC](#) [TV06RW-25-90AE](#) [97-3108B16S-5PW-417](#) [PT06J20-](#)
[24SW](#) [97-3108B16S-4PY-417](#) [97-3108B16S-4PX-417](#) [97-3108B16S-5PY-417](#) [97-3108B16S-4PW-417](#) [CS-DSDMDB37MF-025](#) [97-](#)
[3108B16S-5PZ-417](#) [TV06RW-25-46AE](#) [TVS07RF-21-16AA](#) [TVS07RF-21-39BA](#) [60261626SNCOND1](#) [SE00TVW09](#) [CF-5A9013-04N](#) [CF-](#)
[6A4615-06N](#) [GTS01-22-22PX-025-116](#) [GTS01-22-22P-025-116](#) [GTS01-22-22P-116](#)