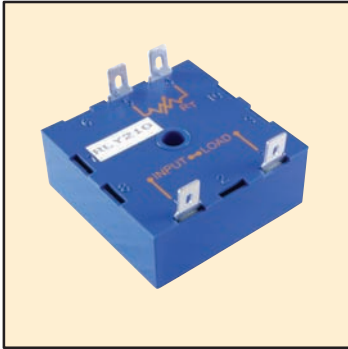


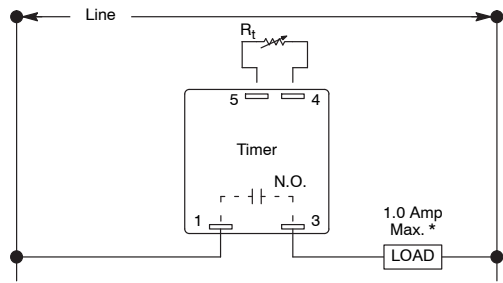
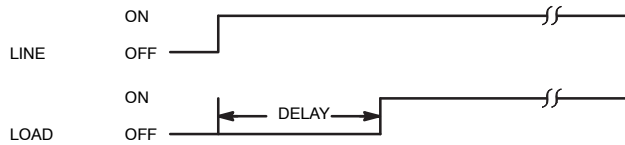
Features

- 2 x 2 Industry Standard Package
- 19–288 Volts AC or DC Operation
- 2 to 600 Seconds Timing Range
- ±2% Repeat Accuracy
- .250" Quick Connect Terminals
- Encapsulated Construction



OPERATION

DELAY ON OPERATE– The delay period begins when input voltage is applied. At the end of the delay period, the relay will operate and will not release until input voltage is removed. Reset occurs when input voltage is reapplied.



* For higher current applications connect a switching relay in series with timer in place of load.

Ratings and Specifications

Operating Voltage Range (Line): 19–288 V DC or AC (50/60Hz)

Switch Configuration: Solid State, SPST

Switching Current (Load): 40mA Amp min., 1 Amp max.

Timing Adjustment Range: 2 to 600 seconds

External Timing Resistance (Approx. 6.5kΩ/Sec.): See Tables

Repeat Accuracy: ±2%

Expected Life (Electrical): 100,000,000 operations @ rated load

Operating Temperature: –20° to +65°C

Storage Temperature: –40° to +85°C

Dielectric Breakdown Voltage Between All Elements: 1500V_{rms}

Transient Protection: 1500 V for 150µs

Mounting: One #8 or #10 Screw

Potentiometer Timing

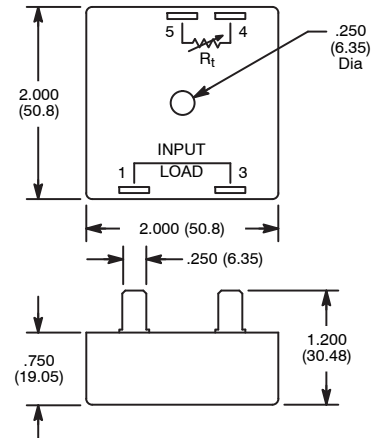
| Potentiometer Value (Ohms) | Approx. Timing Range (Sec.) | Potentiometer Value (Ohms) | Approx. Timing Range (Sec.) |
|----------------------------|-----------------------------|----------------------------|-----------------------------|
| 50K | 2 to 10 | 1.0M | 2 to 150 |
| 100K | 2 to 18 | 2.5M | 2 to 300 |
| 250K | 2 to 40 | 5.0M | 2 to 600 |
| 500K | 2 to 70 | | |

RLY210



External Resistor Adjustable, AC or DC, Delay on Operate, Solid State, Universal Cube Timer.

D66



Fixed Resistor Timing

| Resistor Value (Ohms) | Approx. Time * (Sec.) | Resistor Value (Ohms) | Approx. Time * (Sec.) | Resistor Value (Ohms) | Approx. Time * (Sec.) |
|-----------------------|-----------------------|-----------------------|-----------------------|-----------------------|-----------------------|
| 1K | 2 | 150K | 24 | 820K | 125 |
| 6.2K | 3 | 160K | 26 | 910K | 140 |
| 13K | 4 | 180K | 30 | 1.0M | 150 |
| 20K | 5 | 200K | 32 | 1.1M | 170 |
| 27K | 6 | 220K | 35 | 1.2M | 180 |
| 33K | 7 | 240K | 38 | 1.3M | 190 |
| 39K | 8 | 270K | 42 | 1.5M | 230 |
| 47K | 9 | 300K | 47 | 1.6M | 245 |
| 56K | 10 | 330K | 50 | 1.8M | 255 |
| 62K | 11 | 360K | 56 | 2.0M | 300 |
| 68K | 12 | 390K | 60 | 2.2M | 350 |
| 75K | 13 | 430K | 70 | 2.4M | 380 |
| 82K | 14 | 470K | 72 | 2.7M | 415 |
| 91K | 16 | 510K | 80 | 3.0M | 465 |
| 100K | 17 | 560K | 86 | 3.3M | 510 |
| 110K | 18 | 620K | 95 | 3.6M | 555 |
| 120K | 20 | 680K | 105 | 3.9M | 600 |
| 130K | 22 | 750K | 115 | | |

* Approximate – Actual time value will depend on tolerance of resistor.

X-ON Electronics

Largest Supplier of Electrical and Electronic Components

Click to view similar products for [Time Delay & Timing Relays](#) category:

Click to view products by [NTE](#) manufacturer:

Other Similar products are found below :

[7012GD](#) [7012L10BN](#) [7012L10DY1N](#) [7012L10FN](#) [7012L10HN](#) [7012L26K](#) [7012L8AI2LLSN](#) [7012L8BN](#) [7012L8KN](#) [7012OBILM](#)
[7012OIT](#) [7012PALL](#) [7012PDM](#) [7012PFX](#) [7022L10DN](#) [7022L8BN](#) [7022L8EN](#) [7022L8HN](#) [7022X3D](#) [7024NB](#) [7024SCT](#) [88256455](#) [H3BG-](#)
[N8H](#) [AC110V](#) [H3CRF8AC2448DC1248](#) [1423151-3](#) [1423154-8](#) [1423462-7](#) [1423618-6](#) [1423151-5](#) [1423156-7](#) [1423618-4](#) [2112AH1SDC947](#)
[2122DH1NJC467](#) [2122DH1PE](#) [2-1617805-2](#) [2-1617805-6](#) [K61C-08](#) [286XCXC-300-24D](#) [SCBRX022XXACXAC991](#) [SHS10S110A](#)
[SHS20M220A](#) [1755074-5](#) [SSC12AKA](#) [FAASPRING2](#) [2112DH3NDC50-13](#) [2-1437479-8](#) [2-1617805-1](#) [2-1617805-3](#) [2-1617805-7](#) [PM-](#)
[17DY-110](#)