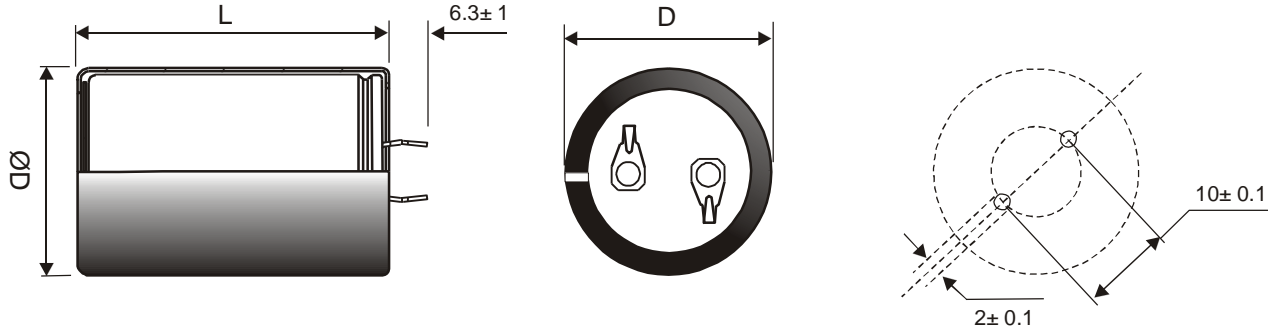


Part Number : PEH532VDF3560M2

Customer :

Customer p/n :



Diameter (mm) 35.5 +/-0.5
 Length (L or L2) (mm) 46 +/-1
 Terminals 2 pin snap-in
 Other Dimensions

Capacitance: 560 uF
 Lower Cap Tolerance: 20 %
 Upper Cap Tolerance: 20 %
 Working Voltage: 400 V DC
 Surge Test Voltage: 440 V DC

ESR 240 m'Ohms MAX @ 100 HZ,20°C
 IMPEDANCE 130 m'Ohms MAX @ 10 KHZ,20°C
 0
 DC LEAKAGE 0.67 mA max @ Test Volts
 Test Voltage 400.0V DC

Rated ripple current 2 A rms at 100 Hz and 105 °C
 Temperature range -40 °C to 105 °C

Expected life = 1500h (Ur, Ir, 105°C, 100Hz) considering EOL at 2x Initial Typical ESR

Approved _____ Date _____

Form : FM003.DES Iss : 3 Date :30/06/1

X-ON Electronics

Largest Supplier of Electrical and Electronic Components

Click to view similar products for [Aluminum Electrolytic Capacitors - Snap In](#) category:

Click to view products by [Kemet](#) manufacturer:

Other Similar products are found below :

[159LBA016M2DC](#) [2151-4-7320](#) [2170-4-7320](#) [380LX333M025K452](#) [MAL205952101E3](#) [450-20-0021](#) [450-20-0020](#) [EET-XB2W221LA](#)
[419-2066-400](#) [MAL219866151E3](#) [EKMS551VSN820MP35S](#) [338LBA035M2BC](#) [380LX680M500J012](#) [381LX101M450H022](#)
[382LX123M080A082](#) [382LX152M500B102VS](#) [382LX272M400B102VS](#) [382LX273M080B082VS](#) [382LXE1366](#) [383LX102M400A082](#)
[383LX222M200A052](#) [383LX223M035A052](#) [383LX561M400A052](#) [383LX821M400A062](#) [MAL215747391E3](#) [MAL219836331E3](#)
[MAL219836151E3](#) [477LBA200M2BF](#) [B41231A5279M000](#) [B41231A8129M000](#) [B41231A9568M000](#) [B41231B5229M000](#)
[B41252A4109M000](#) [B41252A5229M000](#) [B41252A6129M000](#) [B41252B3159M000](#) [B41252B9108M000](#) [B41252C5159M000](#)
[B43540B2108M000](#) [382LX183M063A082](#) [382LX223M050A052](#) [383LX183M063A082](#) [478LBA035M2BD](#) [107LBA450M2BE](#)
[108LBB080M2BC](#) [109LBA035M2DD](#) [109LBB050M2DE](#) [ELH478M080VS3AA](#) [B41231A7159M000](#) [B41231B9478M000](#)