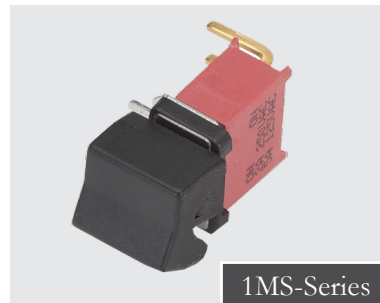
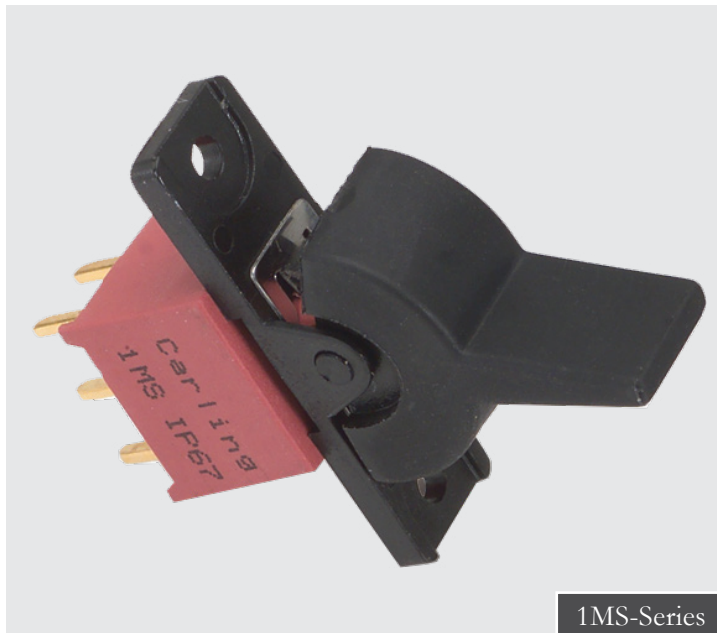


1MS/1M1

1M-Series

MINIATURE ROCKERS & PADDLES

The 1M family of miniature rocker & paddle switches is composed of two switch series; the **1M1-Series** miniature rocker and paddle switch, and the **1MS-Series** sealed miniature rocker and paddle switch. Both products feature PC mounting and offer a variety of ratings, circuits, contact materials, terminal platings, rocker and paddle actuator styles and colors.



Product Highlights:

- IP67 Sealing
- 9 Circuit Options
- Over 20 Termination Styles
- UL, CSA & cUL Approvals

Typical Applications:

- Instrumentation
- Test Equipment
- Telecommunications
- Networking
- Handheld Appliance

Resources:

[Configure a Complete Part](#)

[Download CAD & Sales Drawing >](#)



Carling Technologies®

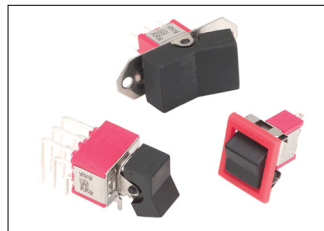
Innovative Designs. Powerful Solutions.

Carling Technologies, Inc.
60 Johnson Avenue, Plainville, CT 06062
Email: sales@carlingtech.com
Application Support: team2@carlingtech.com
Phone: 860.793.9281 Fax: 860.793.9231

www.carlingtech.com



1MS-Series
Sealed
 Miniature Rocker
 & Rocker Switch



1M1-Series
 Miniature Rocker
 & Rocker Switch

Electrical

Contact Rating	refer to ordering scheme
Electrical Life	<i>1MS-Series:</i> 30,000 make & break cycles @ full load <i>1M1-Series:</i> 50,000 make & break cycles @ full load
Contact Resistance	10 mΩ max. initial @ 2-4 VDC 100mA for both silver & gold plated contacts
Insulation Resistance	1000 MΩ min.
Dielectric Strength	1500 Volts RMS @ sea level

Physical

Operating Temperature	-30°C to +85°C
Index of Protection	1MS-Series: IP67
Solder Heat Resistance	MIL-STD-202, Method 210
Actuator Travel	25°

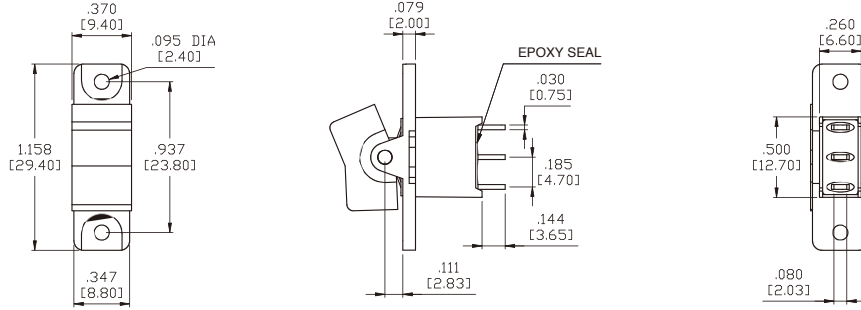
Material

Case	<i>1MS-Series:</i> Glass filled nylon 6/6, flame retardant, heat stabilized (UL 94V-0) <i>1M1-Series:</i> Dially phthalate (DAP) (UL 94V-0)
Rocker/Paddle	<i>1MS-Series:</i> Nylon, black standard, internal o-ring sealed <i>1M1-Series:</i> Nylon (UL 94V-0)
Bushing	<i>1MS-Series:</i> Glass filled nylon 6/6, flame retardant, heat stabilized (UL 94V-0) <i>1M1-Series:</i> Brass, nickel plated
Housing	<i>1MS-Series:</i> Spring Steel <i>1M1-Series:</i> Stainless Steel
Actuator Pivot & Mounting Bracket	<i>1MS-Series:</i> Nylon (UL 94V-0) <i>1M1-Series:</i> Stainless Steel
Actuator Pivot Retainer	<i>1MS-Series:</i> Stainless Steel
Switch Support	Brass, tin plated
Terminal Seal	Epoxy

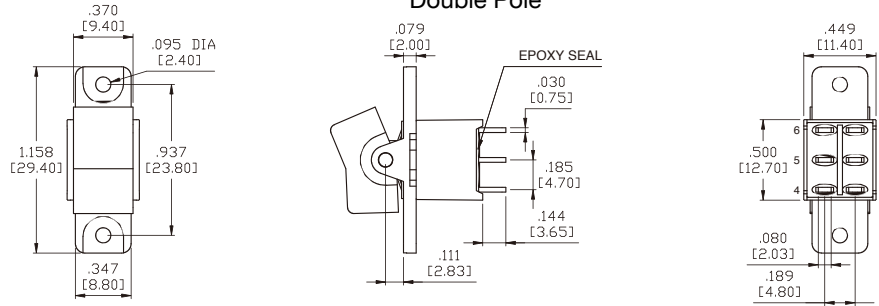
*Manufacturer reserves the right to change product specification without prior notice.

1MS-Series Dimensional Specifications: in. [mm]

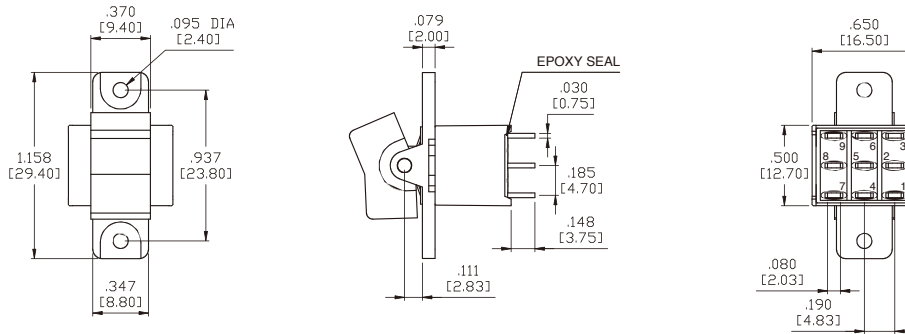
Single Pole



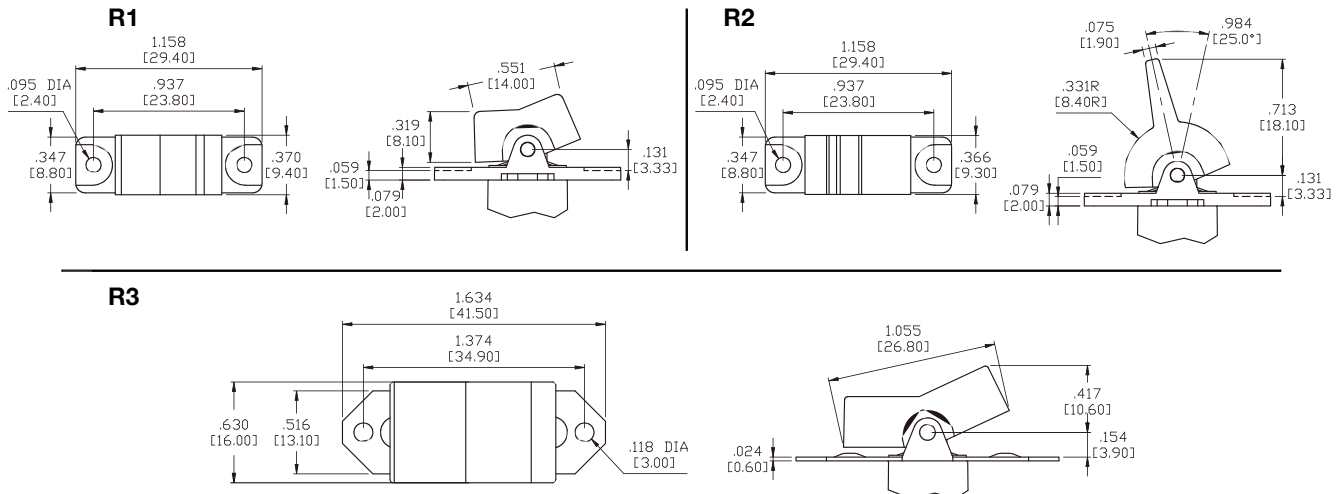
Double Pole



Three Pole



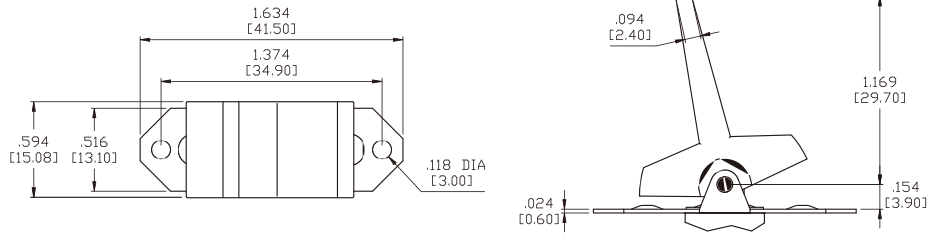
Actuator Options for Panel Rear Mount



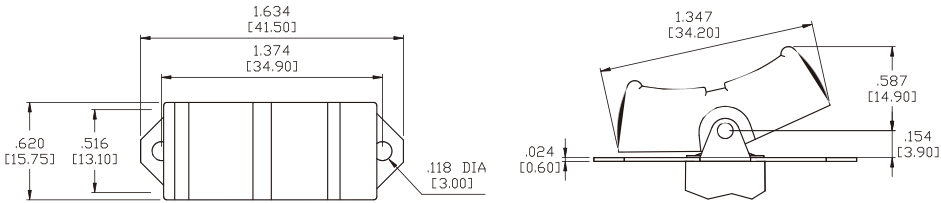
1MS-Series Dimensional Specifications: in. [mm]

Actuator Options for Panel Rear Mount

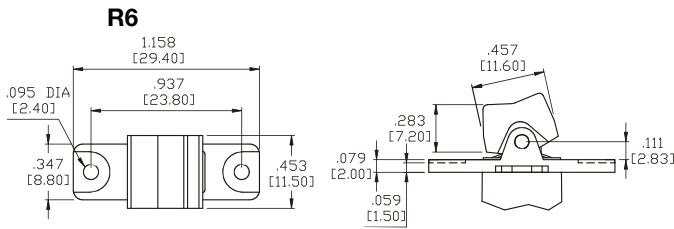
R4



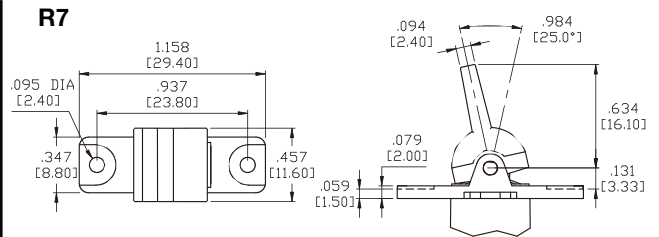
R5



R6

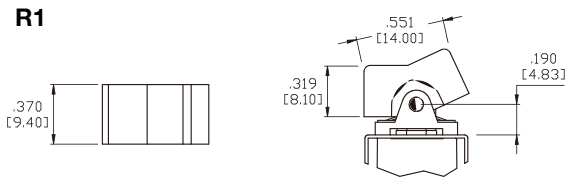


R7

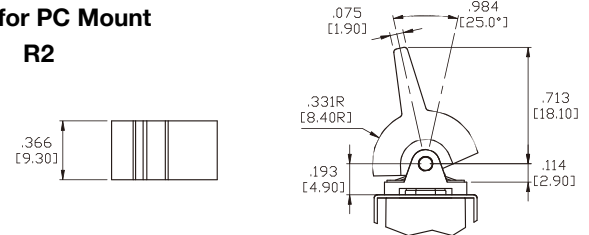


Actuator Options for PC Mount

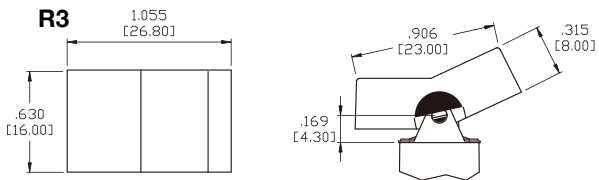
R1



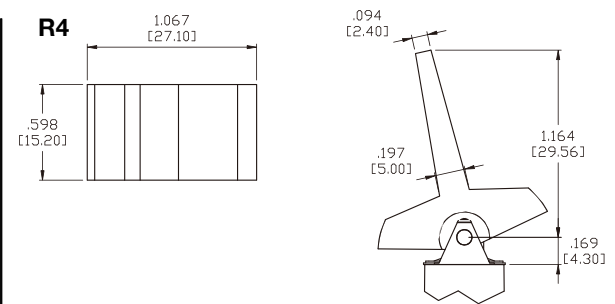
R2



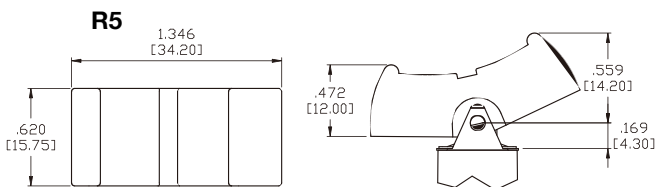
R3



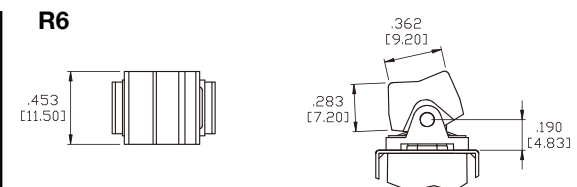
R4



R5



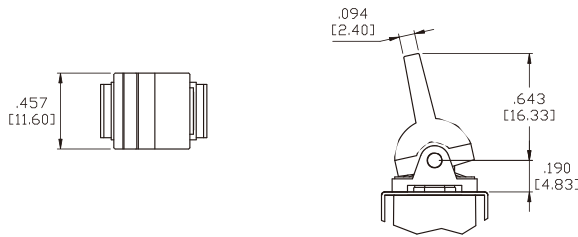
R6



1MS-Series Dimensional Specifications: in. [mm]

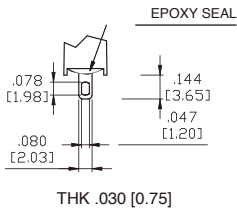
Actuator Options for PC Mount

R7

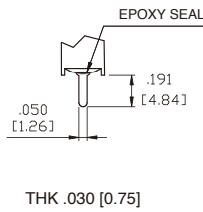


Termination Options

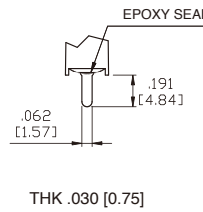
M1 Standard Solder Lug



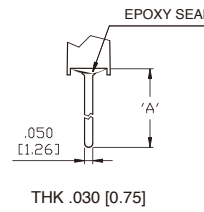
M2 PC Thru-Hole



M3 Quick Connect

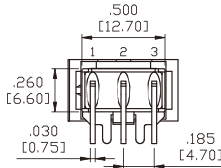
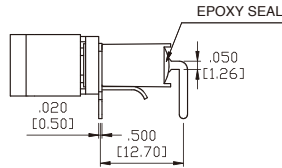
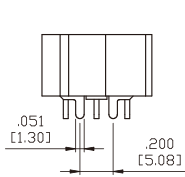


M5 Wire Wrap

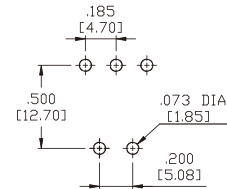


OPTION CODE	DIM. 'A'
M5-1	.711 [18.05]
M5-2	.924 [23.48]
M5-3	.386 [9.80]
M5-4	1.022 [25.97]

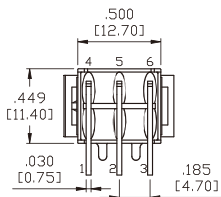
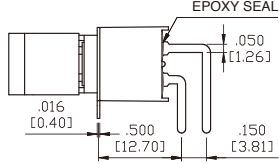
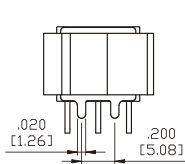
M6 Single Pole



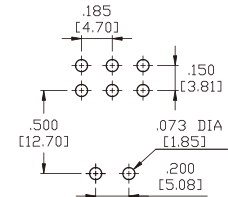
P.C.MOUNTING



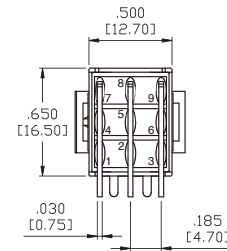
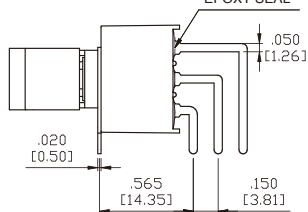
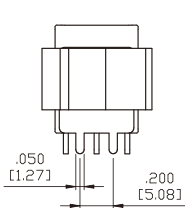
M6 Double Pole



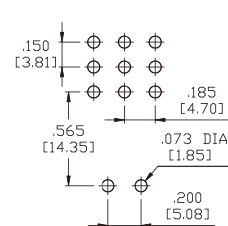
P.C.MOUNTING



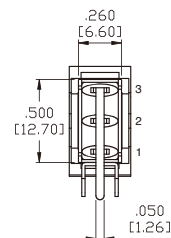
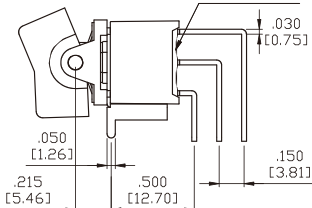
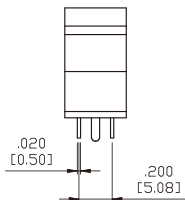
M6 Three Pole



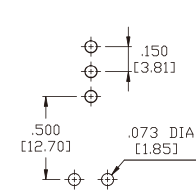
P.C.MOUNTING



M7 Single Pole



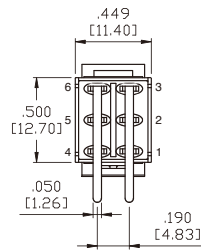
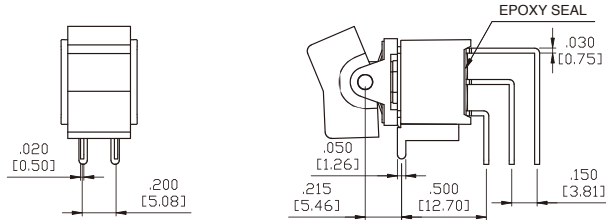
P.C.MOUNTING



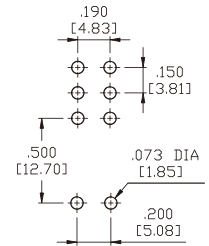
1MS-Series Dimensional Specifications: in. [mm]

Termination Options

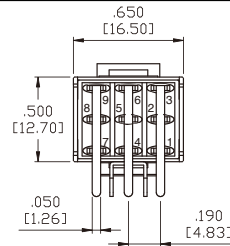
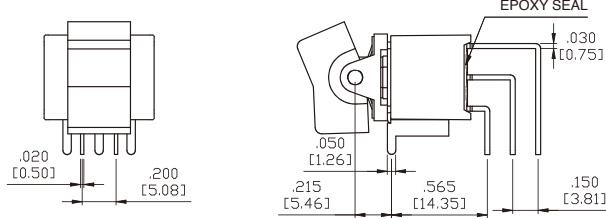
M7 Double Pole



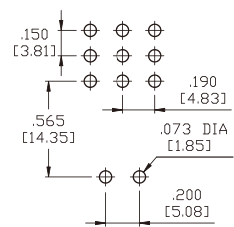
P.C.MOUNTING



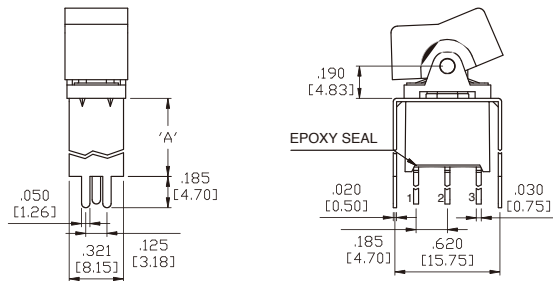
M7 Three Pole



P.C.MOUNTING

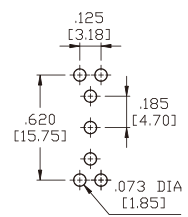


VS2-VS3 Single Pole

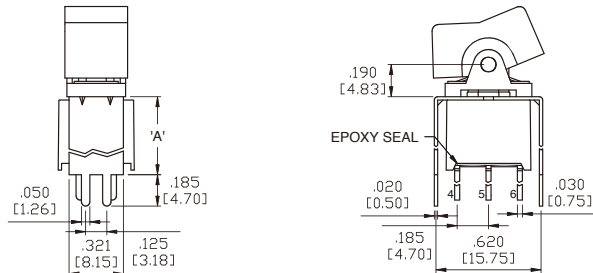


OPTION CODE	DIM.'A'
VS2	.461 [11.70]
VS3	.630 [16.00]

P.C.MOUNTING

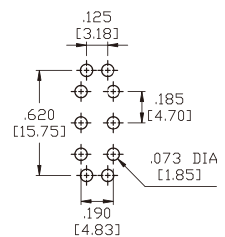


VS2-VS3 Double Pole

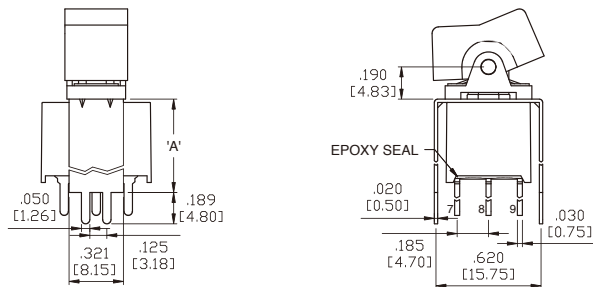


OPTION CODE	DIM.'A'
VS2	.461 [11.70]
VS3	.630 [16.00]

P.C.MOUNTING

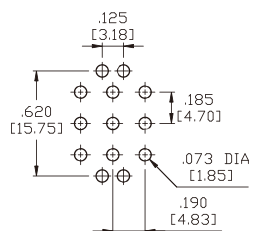


U2-VS3 Three Pole



OPTION CODE	DIM.'A'
U2	.551 [14.00]
VS3	.630 [16.00]

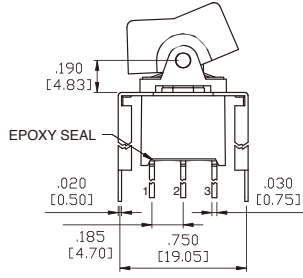
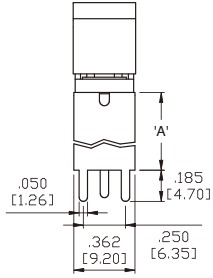
P.C.MOUNTING



1MS-Series Dimensional Specifications: in. [mm]

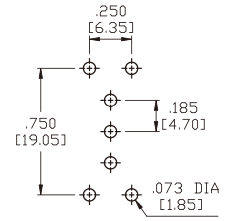
Termination Options

VS4-VS5 Single Pole

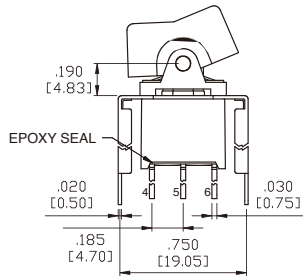
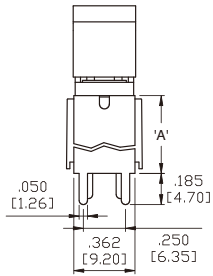


OPTION CODE	DIM.'A'
VS4	.461 [11.70]
VS5	.630 [16.00]

P.C.MOUNTING

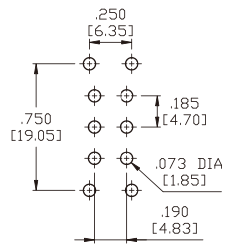


VS4-VS5 Double Pole

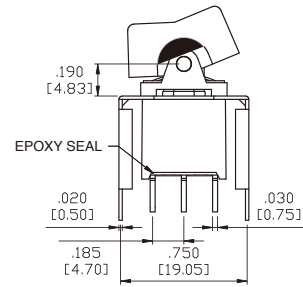
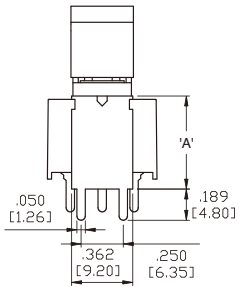


OPTION CODE	DIM.'A'
VS4	.461 [11.70]
VS5	.630 [16.00]

P.C.MOUNTING

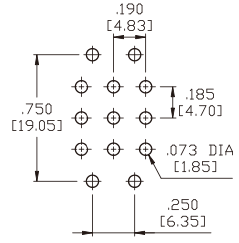


U4-VS5 Three Pole



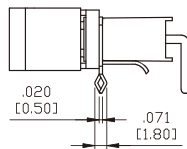
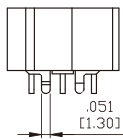
OPTION CODE	DIM.'A'
U4	.551 [14.00]
VS5	.630 [16.00]

P.C.MOUNTING

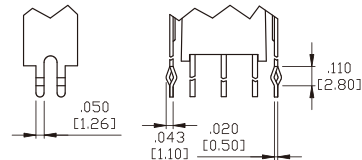


Snap-In Termination Options

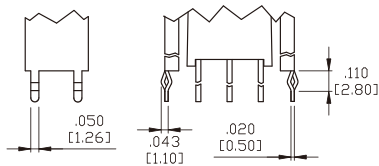
M61



VS21, VS31



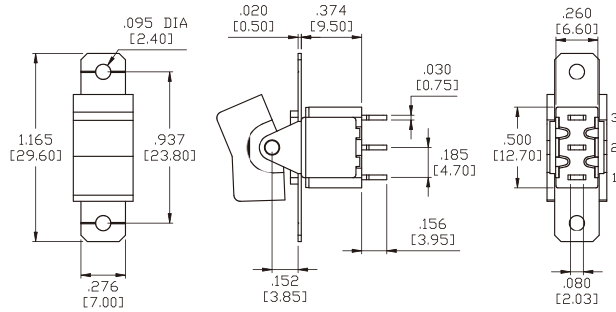
VS41, VS51



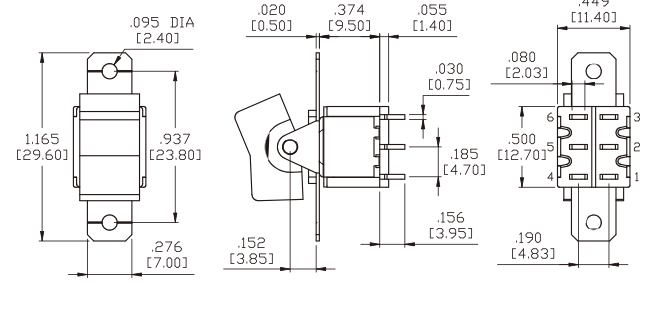
* PC Mounting for M61, M71, VS21, VS31, VS41, VS51 refer to M6, M7, VS2, VS3, VS4, VS5 respectively.

1M1-Series Dimensional Specifications: in. [mm]

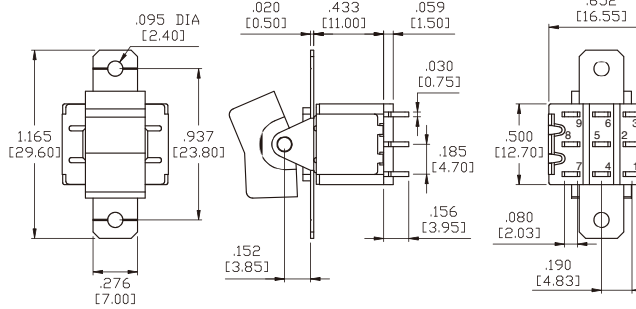
Single Pole



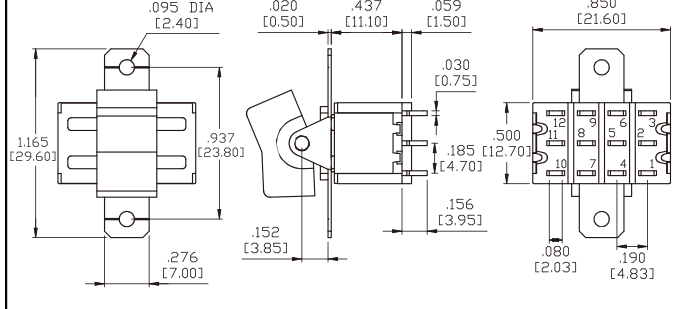
Double Pole



Three Pole

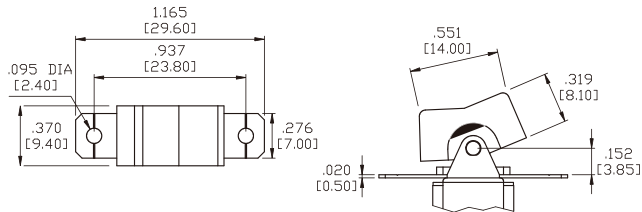


Four Pole

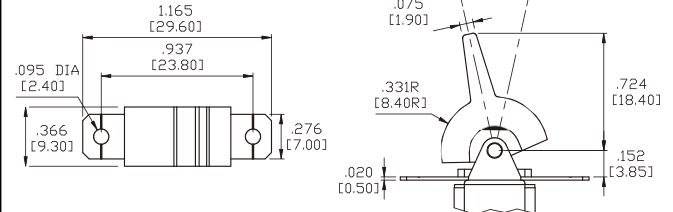


Actuator Options for Panel Rear Mount

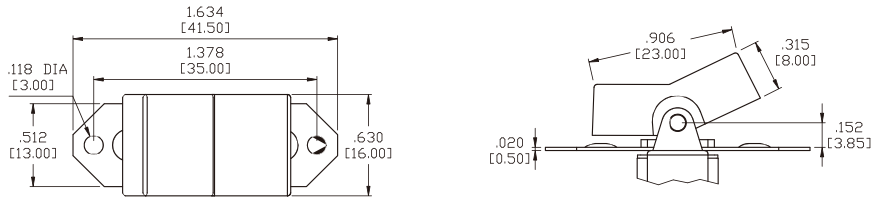
R1



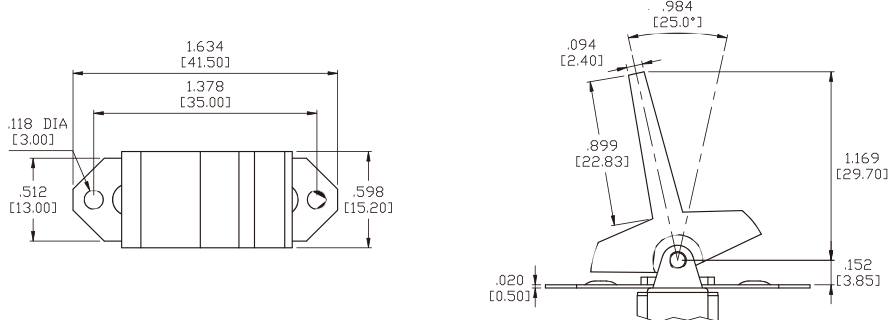
R2



R3



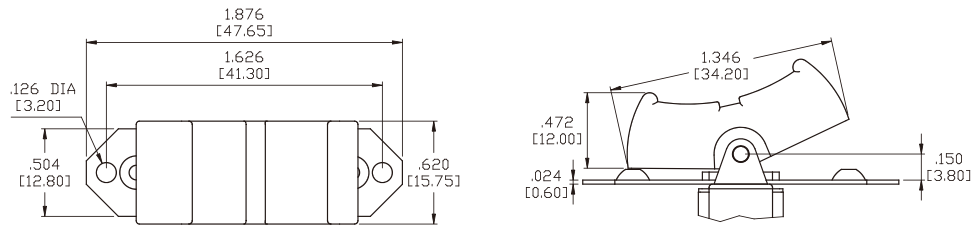
R4



1M1-Series Dimensional Specifications: in. [mm]

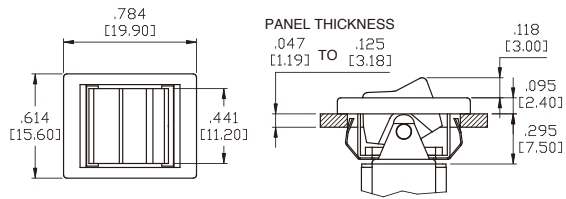
Actuator Options for Panel Rear Mount

R5

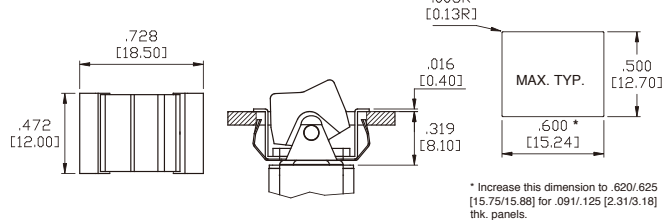


Actuator Options for Snap-In Mount

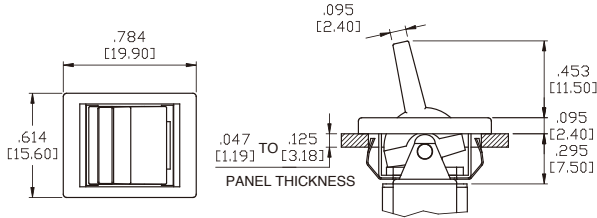
R6



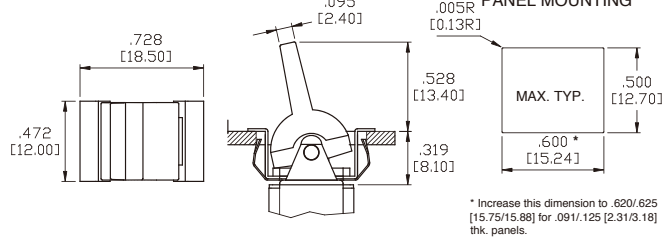
R6 WITHOUT FRAME



R7

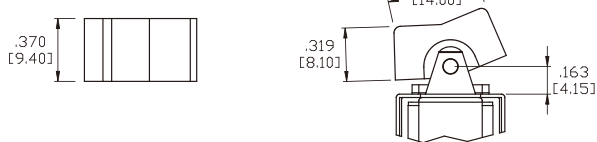


R7 WITHOUT FRAME

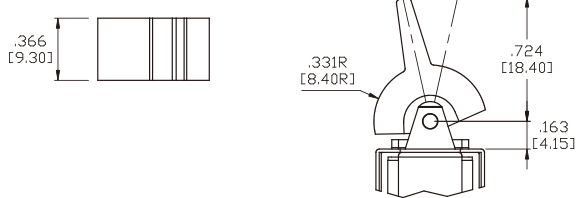


Actuator Options for PC Mount

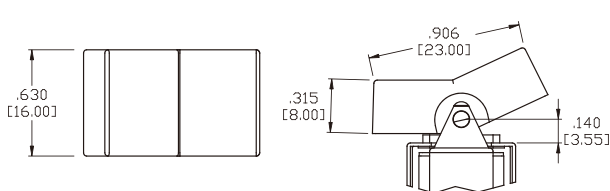
R1



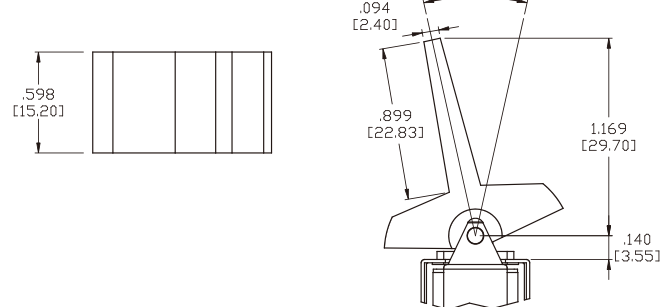
R2



R3

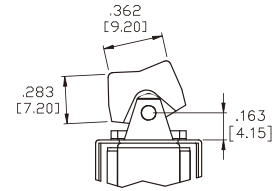
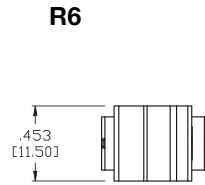
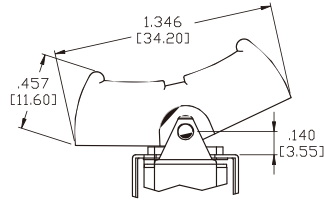
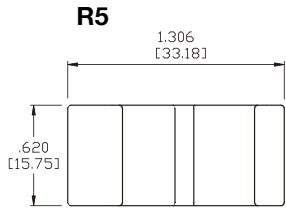


R4

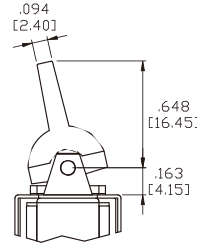


1M1-Series Dimensional Specifications: in. [mm]

Actuator Options for PC Mount

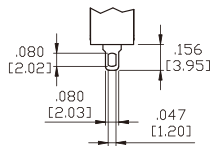


R7



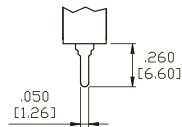
Termination Options

M1 Standard Solder Lug



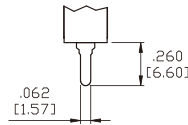
THK .030 [0.75]

M2 PC Thru-Hole



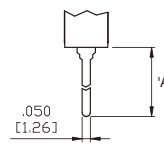
THK .030 [0.75]

M3 Quick Connect



THK .030 [0.75]

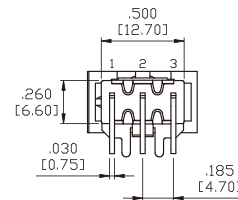
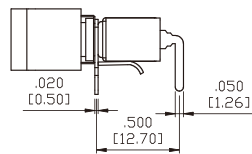
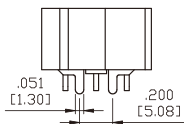
M5 Wire Wrap



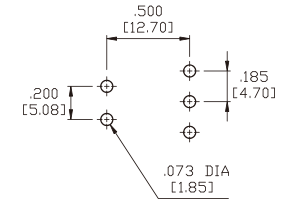
THK .030 [0.75]

OPTION CODE	DIM. 'A'
M5-1	.750 [19.05]
M5-2	.964 [24.48]
M5-3	.425 [10.80]
M5-4	1.062 [26.97]

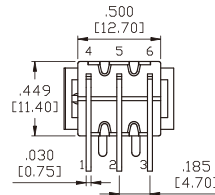
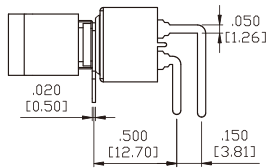
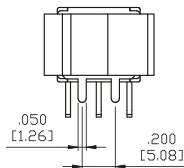
M6 Single Pole



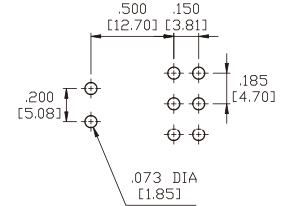
P.C.MOUNTING



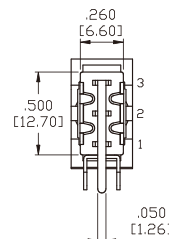
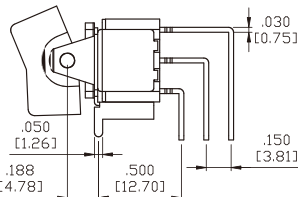
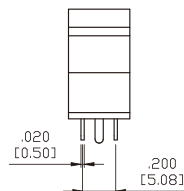
M6 Double Pole



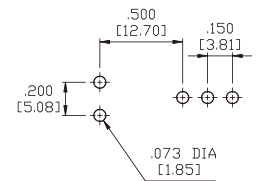
P.C.MOUNTING



M7 Single Pole



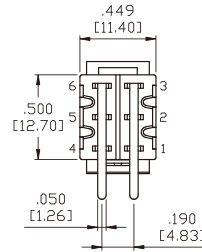
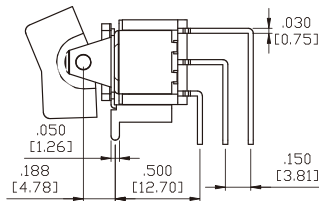
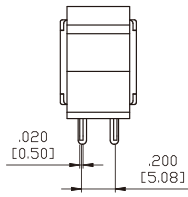
P.C.MOUNTING



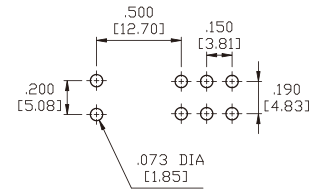
1M1-Series Dimensional Specifications: in. [mm]

Termination Options

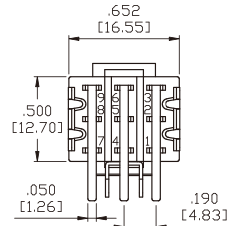
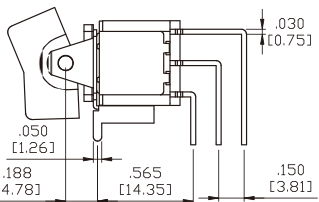
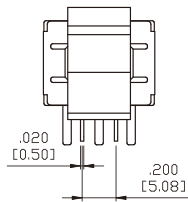
M7 Double Pole



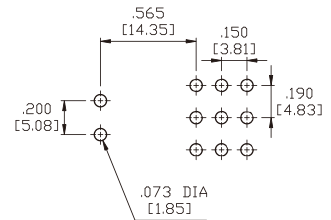
P.C.MOUNTING



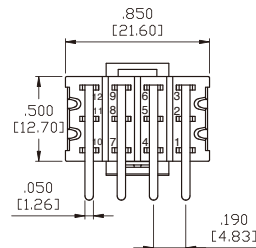
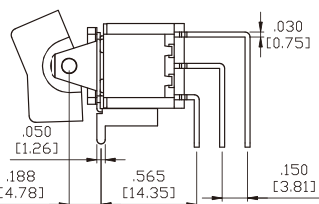
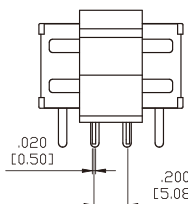
M7 Three Pole



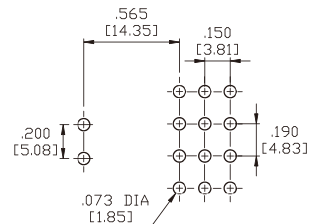
P.C.MOUNTING



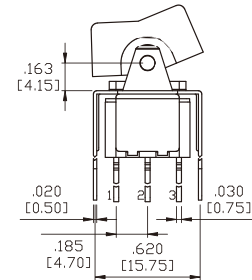
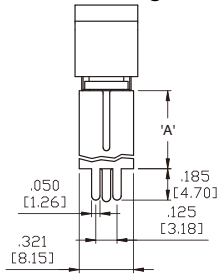
M7 Four Pole



P.C.MOUNTING

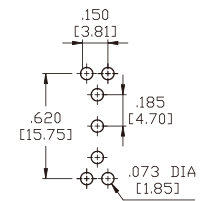


VS2-VS3 Single Pole

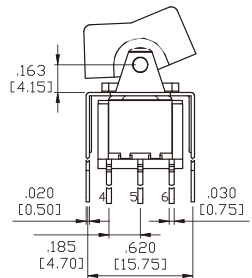
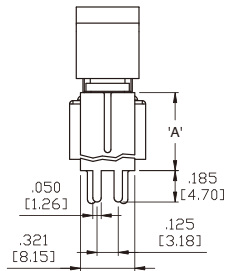


OPTION CODE	DIM.'A'
VS2	.461 [11.70]
VS3	.630 [16.00]

P.C.MOUNTING

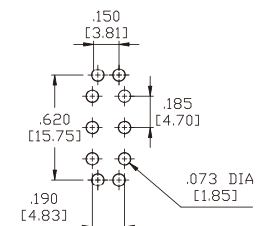


VS2-VS3 Double Pole



OPTION CODE	DIM.'A'
VS2	.461 [11.70]
VS3	.630 [16.00]

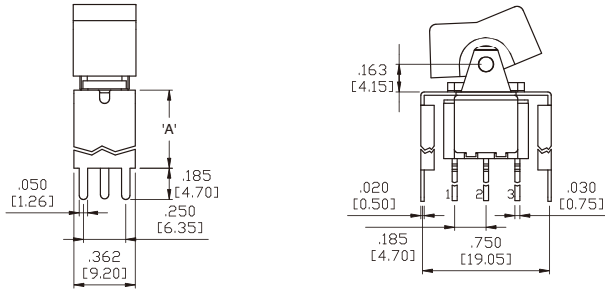
P.C.MOUNTING



1M1-Series Dimensional Specifications: in. [mm]

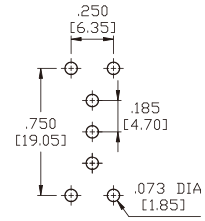
Termination Options

VS4-VS5 Single Pole

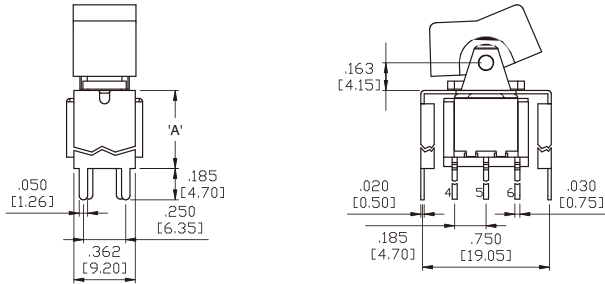


OPTION CODE	DIM. 'A'
VS4	.461 [11.70]
VS5	.630 [16.00]

P.C.MOUNTING

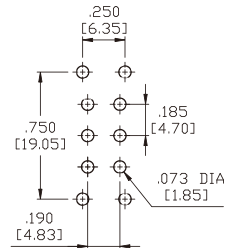


VS4-VS5 Double Pole

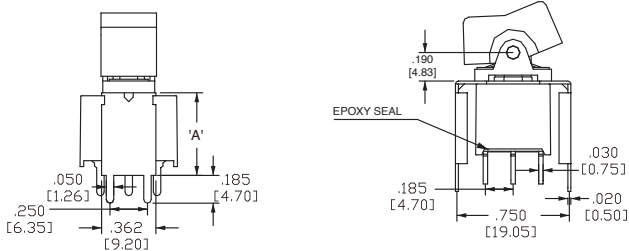


OPTION CODE	DIM. 'A'
VS4	.461 [11.70]
VS5	.630 [16.00]

P.C.MOUNTING

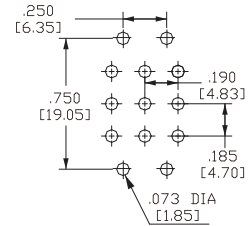


U4-VS5 Three Pole



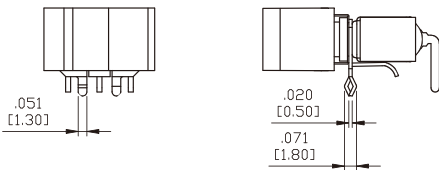
OPTION CODE	DIM. 'A'
U4	.551 [14.00]
VS5	.630 [16.00]

P.C.MOUNTING

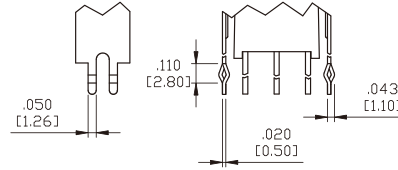


Snap-In Termination Options

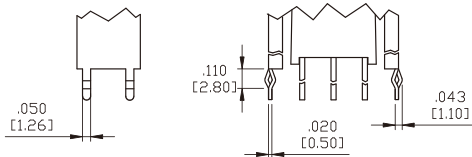
M61



VS21, VS31



VS41, VS51



* PC Mounting for M61, VS21, VS31, VS41, VS51 refer to M6, VS2, VS3, VS4, VS5 respectively.

Authorized Sales Representatives and Distributors

Click on a region of the map below to find your local representatives and distributors or visit www.carlingtech.com/findarep.



About Carling

Founded in 1920, Carling Technologies is a leading manufacturer of electrical and electronic switches and assemblies, circuit breakers, electronic controls, power distribution units, and multiplexed power distribution systems. With four ISO registered manufacturing facilities and technical sales offices worldwide, Carling Technologies Sales, Service and Engineering teams do much more than manufacture electrical components, they engineer powerful solutions! To learn more about Carling please visit www.carlingtech.com/company-profile.

To view all of Carling's environmental, quality, health & safety certifications please visit www.carlingtech.com/environmental-certifications

Worldwide Headquarters

Carling Technologies, Inc.
60 Johnson Avenue, Plainville, CT 06062
Phone: 860.793.9281 **Fax:** 860.793.9231
Email: sales@carlingtech.com

Northern Region Sales Office: nrsm@carlingtech.com
Southeast Region Sales Office: sersm@carlingtech.com
Midwest Region Sales Office: mrrsm@carlingtech.com
West Region Sales Office: wrsm@carlingtech.com
Latin America Sales Office: larsm@carlingtech.com

Asia-Pacific Headquarters

Carling Technologies, Asia-Pacific Ltd.,
Suite 1607, 16/F Tower 2, The Gateway,
Harbour City, 25 Canton Road,
Tsimshatsui, Kowloon, Hong Kong
Phone: Int + 852-2737-2277 **Fax:** Int + 852-2736-9332
Email: sales@carlingtech.com.hk

Shenzhen, China: shenzhen@carlingtech.com
Shanghai, China: shanghai@carlingtech.com
Pune, India: india@carlingtech.com
Kaohsiung, Taiwan: taiwan@carlingtech.com
Yokohama, Japan: japan@carlingtech.com

Europe | Middle East | Africa Headquarters

Carling Technologies LTD
4 Airport Business Park, Exeter Airport,
Clyst Honiton, Exeter, Devon, EX5 2UL, UK
Phone: Int + 44 1392.364422 **Fax:** Int + 44 1392.364477
Email: ltd.sales@carlingtech.com

Germany: gmbh@carlingtech.com
France: sas@carlingtech.com



Carling Technologies®

Innovative Designs. Powerful Solutions.

X-ON Electronics

Largest Supplier of Electrical and Electronic Components

Click to view similar products for [Rocker Switches](#) category:

Click to view products by [Carling](#) manufacturer:

Other Similar products are found below :

[VKD2GHNB-00000-000](#) [VSD2GNNB-00000-000](#) [6-1571986-5](#) [6-1571986-9](#) [632422-4B-KD](#) [7036WWCDBX653+U622](#) [8055K52Z7V](#)
[8138K20E6M50](#) [FMC18A2200002](#) [84206L](#) [84312LX](#) [PREDD4-07F-BB0FW](#) [PREDD5-07F-BB0GW](#) [PRFDD1-16F-BB000](#) [PRFDD3-16F-](#)
[BB000](#) [1-1634201-0](#) [999-16702-001](#) [A101J2ZQ004](#) [A101J4ZQ004](#) [A101J51CB0004](#) [A107J51ZQ0004](#) [A201J1AQ004](#) [A201J1AV2Q004](#)
[A201J3ZB004](#) [A201J50ZQ004](#) [A203J51ZQ0004](#) [A226L11YZQ](#) [A22L11A](#) [A435S1YZQ](#) [H8500XBBBBL-A](#) [H8653VBBG2577W](#)
[HB130CHNWWNAAC](#) [1251.0303](#) [AE205J60V3B004](#) [RH110C2NBB](#) [1352.0107](#) [1363.0201](#) [AML25GBF2AA03GR](#) [1571099-3](#) [1571987-4](#)
[1571987-5](#) [1571989-7](#) [B123J77V7B2](#) [B226J50W4Q22P](#) [B433J37ZQ22M](#) [160212E](#) [1801.1164](#) [1831.1102](#) [1833.3402](#) [1837.1118](#)