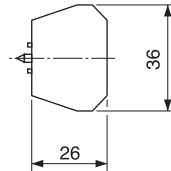


CONTROL PRODUCTS

Contact Block

- NO and NC contact blocks
- Screw fixed to mounting plate
- Can be stacked side by side/piggybacked



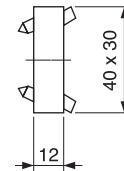
TYPE NO.	DESCRIPTION
CCTTC1R	Red NC
CCTTC0G	Green NO

Mounting Plate

- Mounting plate for contact blocks
- Holds 1 or 2 NO or NC contact blocks
- Metal plate must be used with metal switches



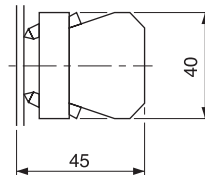
TYPE NO.	DESCRIPTION
CCTTP	Metal Mounting plate
CCTTPP	Plastic Mounting Plate



Contact Block with Mounting Plate

- Control blocks and mountings plates as above supplied as one assembly
- Plastic plate must be used with plastic switches

TYPE NO.	DESCRIPTION
CC10B	Green NO contact + metal base
CC01B	Red NC contact + metal base
CC10B/P	Green NO contact + plastic base
CC01B/P	Red NC contact + plastic base



Dust Cap

- Clear Silicon protection cap for push buttons
- Other colours to order



TYPE NO.	DESCRIPTION
CCTRDCLL	Clear dust cap

Keys for E-Stop Key Release

TYPE NO.	SLEEVE
CCTTKRD	Red
CCTTKBK	Black



Button Surrounds

- Yellow engraved black emergency stop
- Black name plate with recessed label area

TYPE NO.	DESCRIPTION
CCTTBES	60mm diameter e-stop
CCTTBNP	Name plate blank



PCB
TERMINAL
BLOCKS

INTER-
CONNECTION

FUSES &
FUSE-
HOLDERS

LEDs &
INDICATORS

MINIATURE
SWITCHES

LIMIT &
SAFETY
SWITCHES

CONTROL
PRODUCTS

INTERFACE
MODULES &
SUPPORTS

RELAY
BASES

ENCLOSURES

BATTERIES

TRANS-
FORMERS

X-ON Electronics

Largest Supplier of Electrical and Electronic Components

Click to view similar products for [Switch Hardware](#) category:

Click to view products by [Camden](#) manufacturer:

Other Similar products are found below :

[893102000](#) [LZZ1A](#) [0098.9234](#) [61-9707.7](#) [61-9771.0](#) [M2PA-5011](#) [635401](#) [6PA104](#) [6PA113](#) [6PA147-E6](#) [6PA148-E6](#) [6PA32](#) [6PA9](#) [700106](#)
[700109](#) [700201A56](#) [700303A56](#) [700701264](#) [700C1GRY](#) [700C2GRN](#) [704-6001](#) [704.960.4](#) [704.960.9](#) [704.965.1](#) [704.965.2](#) [704.965.6](#)
[704.966.0](#) [7089-3](#) [71M1048](#) [757200264](#) [778000A56](#) [79215938](#) [MHU35](#) [MHU37](#) [825.003.011](#) [825.005.011](#) [825.053.011](#) [825.055.011](#)
[826.000.071](#) [827.020.011](#) [827.400.021](#) [835.900.023](#) [MML52C10C](#) [MML52E10C](#) [MML72EEK](#) [MML92HGH](#) [MML93K](#) [84211M02CNNS](#)
[84211M02LGRS](#) [84211M02LNNX3](#)