

Fitting of the PCB, Light Pipe and PiFace Control & Display Enclosure

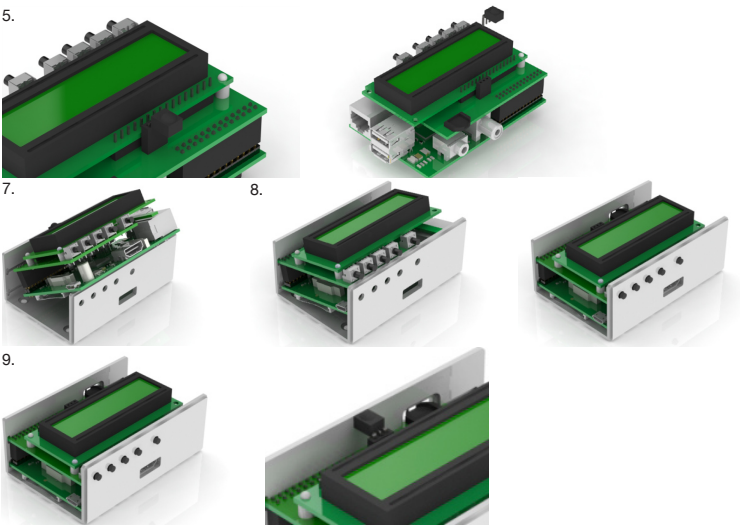
Light Pipe Assembly

1. Place your PiFace Control & Display Digital base onto a steady surface.
2. Peel off the protective film on the light pipes.
(This excludes clear enclosures, skip to the PCB assembly section)
3. Apply two drops of glue onto the recess. (We recommend using Permabond, C203, Super glue)
4. Ensuring that the light pipe is in the correct orientation as shown, place into the recess and hold for five seconds ensuring that the light pipes are perpendicular to the enclosure top.



PCB Assembly

5. Remove the Infrared IR Receiver.
6. Place your PiFace Control & Display enclosure base onto a steady surface.
7. Tilting your PiFace Control & Display PCB at 45° angle, align the audio and RCA video ports with the machined holes in the base and push until the PCB clips into the PCB groove.
8. Push the opposite side of the PCB down so that it clips into the second PCB groove in the base.
9. Re-attach the Infrared IR Reader to the PCB.



Enclosure Assembly

10. Hold the base in one hand (thumb on the audio connector, fingers over the HDMI connector)

Align the USB connector with USB cut-out and clip over the USB and LAN connectors.

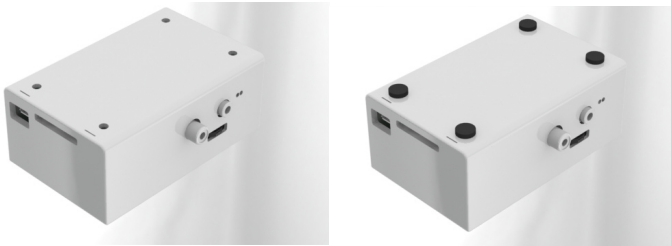
Then clip the opposite end of the top onto the base.

10.



11. Peel off the protective film on both the top and base of your enclosure. Push the supplied feet into place if required.

11.



X-ON Electronics

Largest Supplier of Electrical and Electronic Components

Click to view similar products for [camden manufacturer](#):

Other Similar products are found below :

[412689X](#) [CTBP92HE/10](#) [CTBP92VE/12R](#) [CTBP9350/12](#) [IND515205-240-T/GRN](#) [IND515205-240-T/RD](#) [IND5032405-240-T/GRN](#)
[CE10.00.EI](#) [C192SHAND](#) [RTM5006/16-PAT](#) [CNMB/6ST/2](#) [CNMB/4ST/2](#) [CSACST004](#) [CTBP9200/9](#) [CIME/M/BE2250SS](#) [CHH64E1BL](#)
[CIM/15W-DMFS](#) [CHHBAT2GY](#) [CFTBN/2](#) [CCB2S1/04](#) [CHDX6-222C](#) [CHDX8-224](#) [CHDASMP29](#) [CHDASMP34](#) [CHDX810DD](#)
[CHDX811DD](#) [CCTTM40LR](#) [CTBP92VJ/5S](#) [CTBP92VJ/8R](#) [CTSN431/12/M](#) [CTSN433/12/M](#) [CUABOX006](#) [IND513113-LED-RD](#)
[CE10.00.FM](#) [CBRPH-BLK](#) [RX2008/S-5-WH](#) [CBARD-CAR](#) [CRDCG0007](#) [CNMB/4/KIT](#) [CTB5050/5](#) [CTBP92HE/11](#) [CTBP9358/10AO](#)
[CHH66C2GY](#) [CHH456PBK](#) [CHH451ABK](#) [CIM/9W-DMFS](#) [CIM/25W-DMFS](#) [RTM5004/14-NC-BLK](#) [RTM5006/16-NC-BLK](#)
[IND5032405-125-T/AMB](#)