

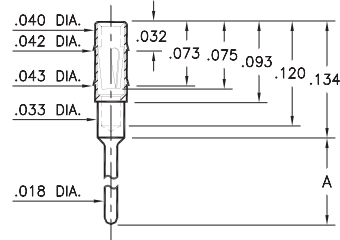
PIN RECEPTACLES

**FOR .015" - .020" DIAMETER PINS (#11 CONTACT)
AND .015" - .022" DIAMETER PINS (#05 & #21 CONTACTS)
(SEE SPECIFIC CONTACT RANGE ON PAGE 251)**

0489

0489-X-15-XX-11-XX-04-0

Press-fit in .041 mounting hole



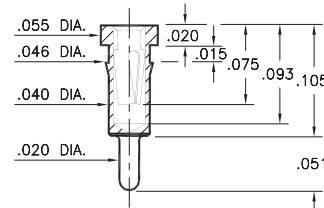
Basic Part Number	Length A
0489-0	.102
0489-1	.199
0489-2	.299

0463

0463-0-15-XX-21-XX-04-0

Press-fit in .043 mounting hole.

Shell is Phosphor Bronze Alloy 544 (B2)

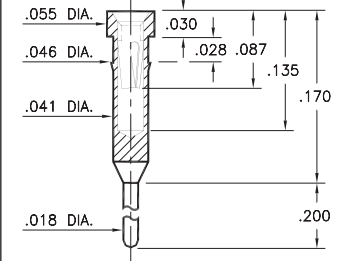


0466

0466-0-15-XX-21-XX-04-0

Press-fit in .043 mounting hole.

Shell is Phosphor Bronze Alloy 544 (B2)

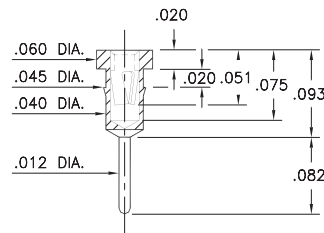


7491

7491-0-15-XX-09-XX-04-0

Press-fit in .042 mounting hole

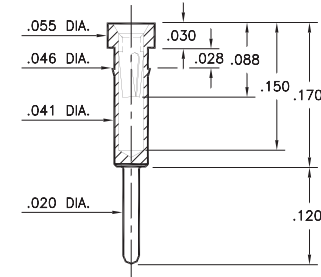
*Contact substitution not recommended



0462

0462-0-15-XX-X1-XX-04-0

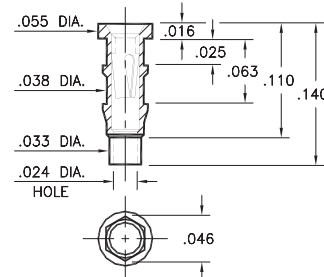
Press-fit in .043 mounting hole



0560

0560-0-15-XX-11-XX-10-0

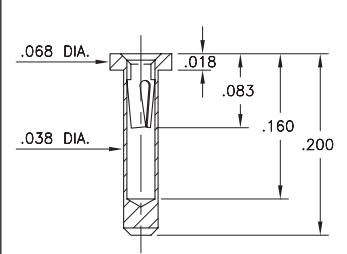
Hex press-fit in .043 plated through-hole



5552

5552-0-15-XX-05-XX-10-0

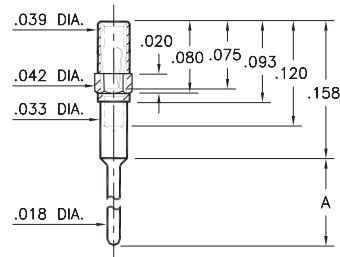
Solder mount in .040 min. mounting hole



4890

4890-X-15-XX-11-XX-04-0

Octagonal press-fit in .041 mounting hole

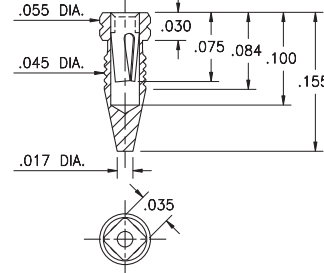


Basic Part Number	Length A
4890-0	.102
4890-1	.199
4890-2	.299

4994

4994-0-15-15-11-27-10-0

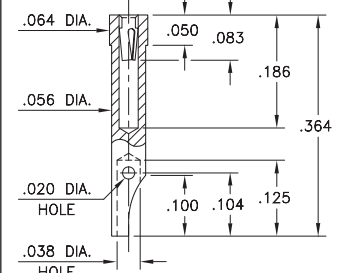
Compliant press-fit in .041 - .044 dia. mounting hole



4485

4485-0-51-XX-21-XX-10-0

Solder mount in .059 min. mounting hole
For wire sizes up to 22 AWG



SPECIFICATIONS:

Shell Material: Brass Alloy 360, 1/2 Hard

Contact Material: Beryllium Copper Alloy 172, HT

Dimensions: Inches

Tolerances On: Lengths: ±.005

Diameters: ±.002

Angles: ± 2°



ORDER CODE: XXXX - X - XX - XX - XX - XX - XX - 0

BASIC PART #

SPECIFY SHELL FINISH:

- 01 200 μ" TIN/LEAD OVER NICKEL
- ◆ 80 200 μ" TIN OVER NICKEL (RoHS)
- ◆ 15 10 μ" GOLD OVER NICKEL (RoHS)

SPECIFY CONTACT FINISH:

- 02 100 μ" TIN/LEAD OVER NICKEL
- ◆ 84 100 μ" TIN OVER NICKEL (RoHS)
- ◆ 27 30 μ" GOLD OVER NICKEL (RoHS)

SELECT CONTACT:

#05, #11 or #21 CONTACT (DATA ON PAGE 251)

(For alternate contact choices, see group A on page 248)



X-ON Electronics

Largest Supplier of Electrical and Electronic Components

Click to view similar products for [Circuit Board Hardware - PCB category](#):

Click to view products by [Mill-Max manufacturer](#):

Other Similar products are found below :

[8919-0-00-15-00-00-03-0](#) [0132-0-15-01-30-27-04-0](#) [0135-0-15-01-30-27-04-0](#) [5970-1-15-01-32-14-04-0](#) [0132-0-15-15-30-27-04-0](#) [0135-0-15-15-30-27-04-0](#) [0149-0-15-15-30-27-04-0](#) [MBI 1 BLUE](#) [7305-0-15-15-47-14-10-0](#) [MKU 1 BLACK](#) [MLN 150/1 BLACK](#) [8579-0-15-80-11-27-10-0](#) [8579-1-15-15-11-27-10-0](#) [8637-0-15-15-21-14-10-0](#) [8830-0-15-01-22-14-10-0](#) [8836-0-00-21-00-00-03-0](#) [PRUEF 2 RED](#) [9976-0-00-00-00-00-03-0](#) [1178-0-01-80-00-00-03-0](#) [PW1616](#) [1215-3-05-00-00-00-01-0](#) [1303-0-15-15-47-14-04-0](#) [1404-3](#) [1404-4](#) [1406-4](#) [1407-3](#) [1406-3](#) [1407-4](#) [1408-3](#) [1424-4](#) [1426-3](#) [1427-3](#) [1427-4](#) [1428-3](#) [1419-4](#) [1424-3](#) [1426-4](#) [1428-4](#) [MPS 1 BLACK](#) [1520150-1](#) [1548-103](#) [1801-0-15-15-30-27-04-0](#) [1938-0-00-00-00-00-03-0](#) [1942-0-00-00-00-00-03-0](#) [2101-3-00-44-00-00-07-0](#) [2104-2-01-44-00-00-07-0](#) [2108-2-00-50-00-00-07-0](#) [2108-3-00-44-00-00-07-0](#) [2109-2-00-44-00-00-07-0](#) [2110-2-00-44-00-00-07-0](#)