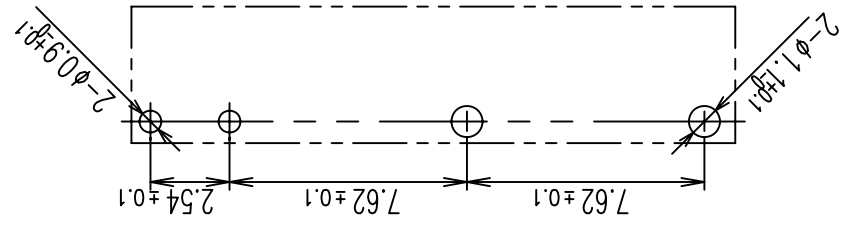
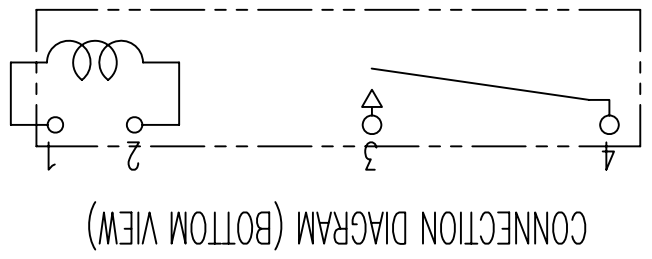
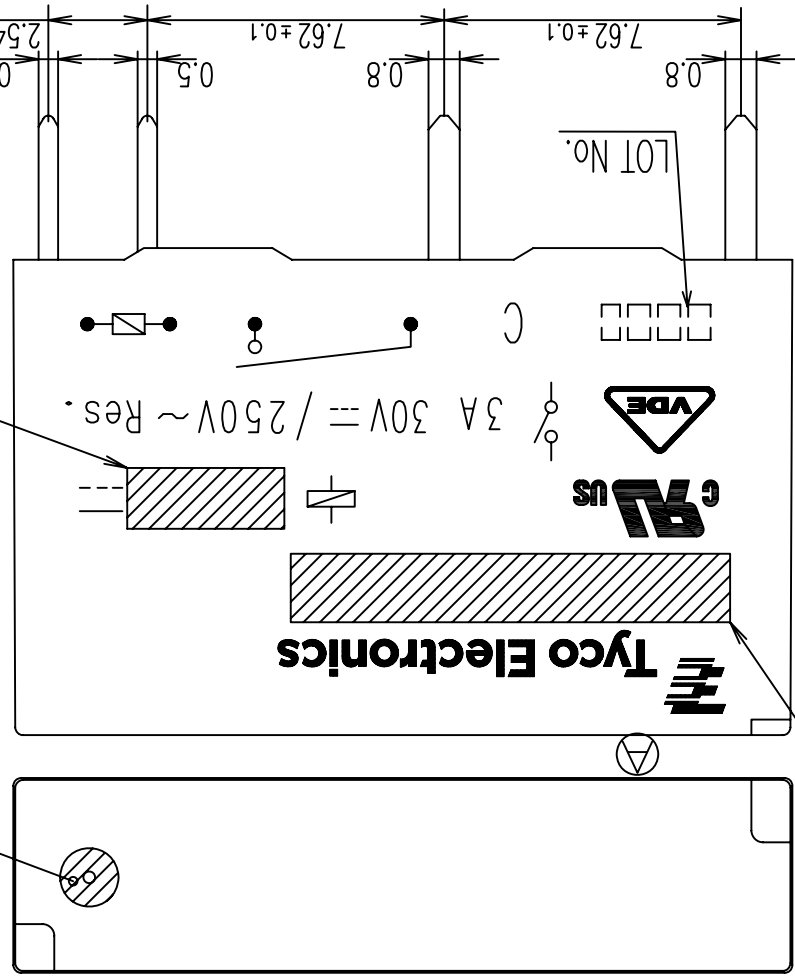
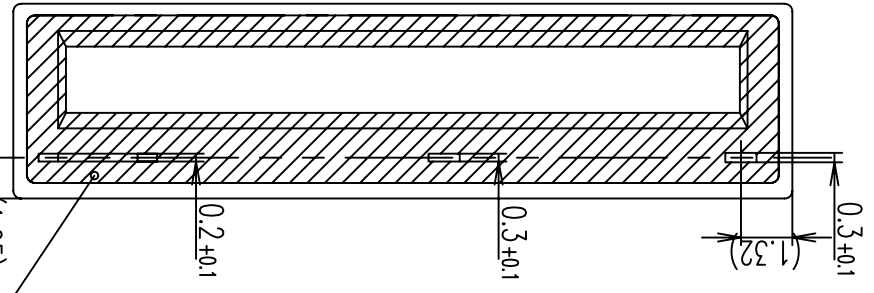
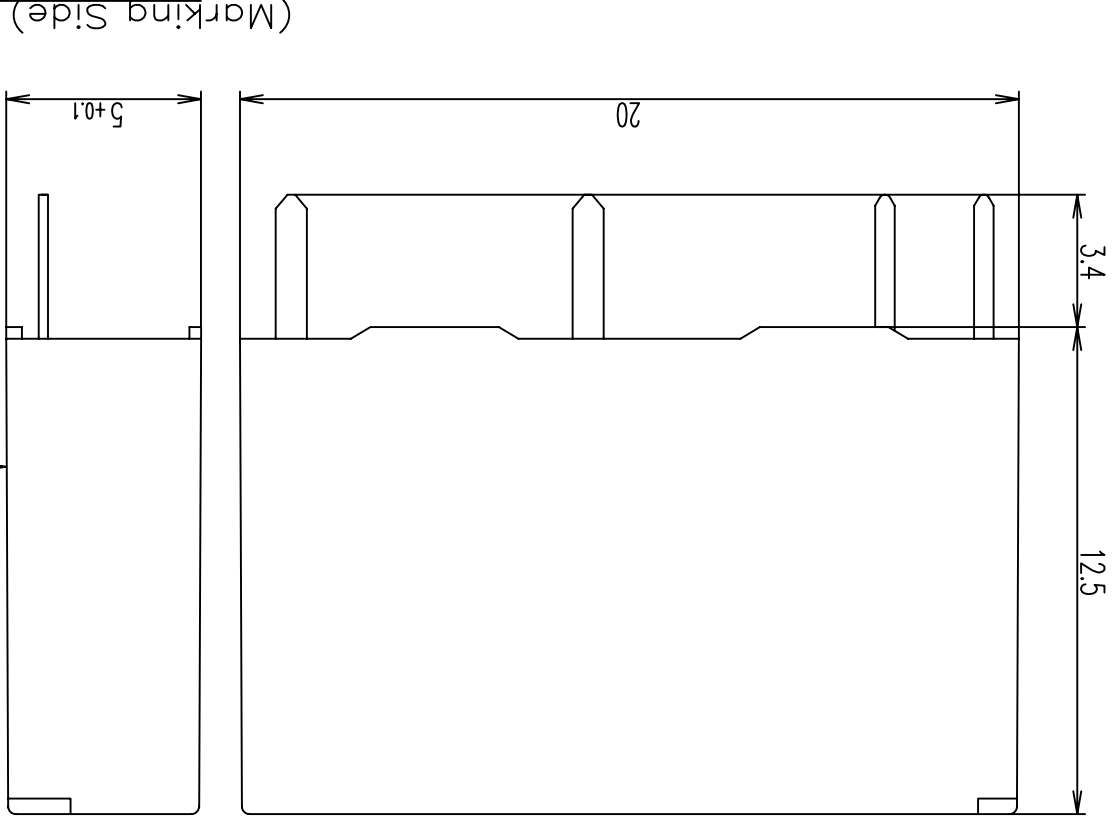


REVISIONS

P	LTR	DESCRIPTION	ECN	DATE	DWN	APVD
02		MODIFY	FK00 0014 04	16-JAN-04	H.S	A.N
A		USE NEW LOGO	ECO-08-020470	10-OCT-08	FSH	BHY



1. TERMINAL DIMENSION IS AFTER SOLDER DIP
2. LOT NO. SYSTEM AS FOLLOWING;

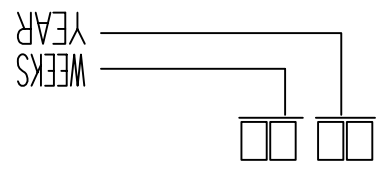
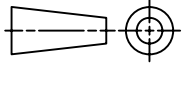


Diagram dimension	Tolerance
0.99mm max	±0.1mm
1 - 2.99mm	±0.2mm
3mm min	±0.3mm



DIMENSIONS: mm  
 THIS DRAWING IS A CONTROLLED DOCUMENT FOR TYCO ELECTRONICS CORPORATION. IT IS SUBJECT TO CHANGE AND THE CONTROLLING ENGINEERING ORGANIZATION SHOULD BE CONTACTED FOR THE LATEST REVISION. TOLERANCES UNLESS OTHERWISE SPECIFIED:

FINISH	ANGLES
0 PLC	±
1 PLC	±
2 PLC	±
3 PLC	±
4 PLC	±

CUSTOMER DRAWING		SCALE		SHEET		REV	
PCN-L3M** CUSTOMER DRAWING		5:1		1 OF 3		A	
DWN	Y. OKAMOTO	CHK	M. MOCHIZUKI	APVD	A. NAGAI	PRODUCT SPEC	SEE PRODUCT SPEC
NAME	Tyco Electronics Shenzhen, China						
SIZE	A3	CAGE CODE	00779	DRAWING NO	1721066	RESTRICTED TO	-
WEIGHT	-	FINISH	-	MATERIAL	-	CUSTOMER DRAWING	

LOC

HB DIST

REV	DATE	DESCRIPTION	ECN	APVD
0		RELEASE		

REVISONS

4

3

2

1

ITEM	DESCRIPTION	a	b
1	BOBBIN (BLACK ONLY)	1	1
2	COIL TERMINAL A	1	1
3	COIL TERMINAL B	1	1
4	CORE	1	1
5	BASE (NATURAL)	1	1
6	MOVABLE TERMINAL	1	1
7	MOVABLE CONTACT	2	2
8	STATIONARY TERMINAL	1	1
9	STATIONARY CONTACT	1	1
10	ARMATURE	1	1
11	CARD (NATURAL)	1	1
12	MAGNETIC WIRE	AR	AR
13	EPOXY	AR	AR
14	CASE (NATURAL)	1	1
15	UV RESIN	AR	

PARTS LIST

DESCRIPTION	PART B	EC TYPE NO (PART A)	TE PART NO	PACKING SPECIFICATION	PRODUCT SPEC	DISCRIPTION	No.
PRELIMINARY	24V	PCN-124L3MHZ	1-1721066-6	107-79043 (TRAY)	107-79711	REINFORCED INSULATION WASHABLE TYPE	b
PRELIMINARY	18V	PCN-118L3MHZ	1-1721066-5	107-79043 (TRAY)	108-79710	REINFORCED INSULATION WASHABLE TYPE	
PRELIMINARY	12V	PCN-112L3MHZ	1-1721066-4	107-79043 (TRAY)	108-79709	REINFORCED INSULATION WASHABLE TYPE	
PRELIMINARY	9V	PCN-109L3MHZ	1-1721066-3	107-79043 (TRAY)	108-79708	REINFORCED INSULATION WASHABLE TYPE	
PRELIMINARY	6V	PCN-106L3MHZ	1-1721066-2	107-79043 (TRAY)	108-79707	REINFORCED INSULATION WASHABLE TYPE	
PRELIMINARY	5V	PCN-105L3MHZ	1-1721066-1	107-79043 (TRAY)	108-79706	REINFORCED INSULATION WASHABLE TYPE	
PRELIMINARY	4.5V	PCN-104L3MHZ	1-1721066-0	107-79043 (TRAY)	108-79705	REINFORCED INSULATION WASHABLE TYPE	
PRELIMINARY	3V	PCN-103L3MHZ	1721066-9	107-79043 (TRAY)	108-79704	REINFORCED INSULATION WASHABLE TYPE	
PRELIMINARY	24V	PCN-124L3MZ	1721066-8	107-79043 (TRAY)	108-79703	REINFORCED INSULATION WASHABLE TYPE	
PRELIMINARY	18V	PCN-118L3MZ	1721066-7	107-79043 (TRAY)	108-79702	REINFORCED INSULATION WASHABLE TYPE	
PRELIMINARY	12V	PCN-112L3MZ	1721066-6	107-79043 (TRAY)	108-79701	REINFORCED INSULATION WASHABLE TYPE	
PRELIMINARY	9V	PCN-109L3MZ	1721066-5	107-79043 (TRAY)	108-79700	REINFORCED INSULATION WASHABLE TYPE	
PRELIMINARY	6V	PCN-106L3MZ	1721066-4	107-79043 (TRAY)	108-79699	REINFORCED INSULATION WASHABLE TYPE	
PRELIMINARY	5V	PCN-105L3MZ	1721066-3	107-79043 (TRAY)	108-79698	REINFORCED INSULATION WASHABLE TYPE	
PRELIMINARY	4.5V	PCN-104L3MZ	1721066-2	107-79043 (TRAY)	108-79697	REINFORCED INSULATION WASHABLE TYPE	
PRELIMINARY	3V	PCN-103L3MZ	1721066-1	107-79043 (TRAY)	108-79696	REINFORCED INSULATION WASHABLE TYPE	

MOLD COLOR

NATURAL: REINFORCED INSULATION MODEL

<p>THIS DRAWING IS A CONTROLLED DOCUMENT FOR TYCO ELECTRONICS CORPORATION. IT IS SUBJECT TO CHANGE AND THE CONTROLLING ENGINEERING ORGANIZATION SHOULD BE CONTACTED FOR THE LATEST REVISION.</p>		<p>DIMENSIONS: mm</p>
<p>FINISH: 0 PLC, 1 PLC, 2 PLC, 3 PLC, 4 PLG ANGLES</p>	<p>TOLERANCES UNLESS OTHERWISE SPECIFIED:</p>	<p>APVD: _____</p> <p>CHK: _____</p> <p>DWN: _____</p>
<p>MATERIAL: _____</p>	<p>APPLICATION SPEC: _____</p>	<p>NAME: PCN-L3M** CUSTOMER DRAWING</p>
<p>WEIGHT: _____</p>	<p>PRODUCT SPEC: _____</p>	<p>TYCO Electronics Corporation Shenzhen, China</p>
<p>CUSTOMER DRAWING</p>	<p>SCALE: _____</p>	<p>SHEET: 2 OF 3</p>
<p>REV: _____</p>	<p>DRAWING NO: 1721066</p>	<p>CAGE CODE: 00779</p>
<p>RESTRICTED TO: _____</p>	<p>SIZE: A3</p>	<p>APVD: _____</p>

A

B

C

D

A

B

C

D

LOC	HB
DIST	

0	p	LTR
---	---	-----

RELEASE	DESCRIPTION	ECN	DATE	DWN	APVD
---------	-------------	-----	------	-----	------

REVISIONS

1

2

3

4

ITEM	DESCRIPTION	d	b
1	BOBBIN (BLACK ONLY)	1	1
2	COIL TERMINAL A	1	1
3	COIL TERMINAL B	1	1
4	CORE	1	1
5	BASE (NATURAL)	1	1
6	MOVABLE TERMINAL	1	1
7	MOVABLE CONTACT	2	2
8	STATIONARY TERMINAL	1	1
9	STATIONARY CONTACT	1	1
10	ARMATURE	1	1
11	CARD (NATURAL)	1	1
12	MAGNETIC WIRE	AR	AR
13	EPOXY	AR	AR
14	CASE (NATURAL)	1	1
15	UV RESIN	AR	

PARTS LIST

DESCRIPTION	PART B	EC TYPE NO (PART A)	TE PART NO	PACKING SPECIFICATION	PRODUCT SPEC	DISCRIPTION	No.	
PRELIMINARY	24V	PCN-124L3MHZ	3-1721066-2	107-79039 (TUBE)	108-79711	REINFORCED INSURATION WASHABLE TYPE	b	
PRELIMINARY	18V	PCN-118L3MHZ	3-1721066-1	107-79039 (TUBE)	108-79710	REINFORCED INSURATION WASHABLE TYPE		
PRELIMINARY	12V	PCN-112L3MHZ	3-1721066-0	107-79039 (TUBE)	108-79709	REINFORCED INSURATION WASHABLE TYPE		
PRELIMINARY	9V	PCN-109L3MHZ	2-1721066-9	107-79039 (TUBE)	108-79708	REINFORCED INSURATION WASHABLE TYPE		
PRELIMINARY	6V	PCN-106L3MHZ	2-1721066-8	107-79039 (TUBE)	108-79707	REINFORCED INSURATION WASHABLE TYPE		
PRELIMINARY	5V	PCN-105L3MHZ	2-1721066-7	107-79039 (TUBE)	108-79706	REINFORCED INSURATION WASHABLE TYPE		
PRELIMINARY	4.5V	PCN-104L3MHZ	2-1721066-6	107-79039 (TUBE)	108-79705	REINFORCED INSURATION WASHABLE TYPE		
PRELIMINARY	3V	PCN-103L3MHZ	2-1721066-5	107-79039 (TUBE)	108-79704	REINFORCED INSURATION WASHABLE TYPE		
PRELIMINARY	24V	PCN-124L3MZ	2-1721066-4	107-79039 (TUBE)	108-79703	INSURATION		d
PRELIMINARY	18V	PCN-118L3MZ	2-1721066-3	107-79039 (TUBE)	108-79702	INSURATION		
PRELIMINARY	12V	PCN-112L3MZ	2-1721066-2	107-79039 (TUBE)	108-79701	INSURATION		
PRELIMINARY	9V	PCN-109L3MZ	2-1721066-1	107-79039 (TUBE)	108-79700	INSURATION		
PRELIMINARY	6V	PCN-106L3MZ	2-1721066-0	107-79039 (TUBE)	108-79699	INSURATION		
PRELIMINARY	5V	PCN-105L3MZ	1-1721066-9	107-79039 (TUBE)	108-79698	PLASTIC SEALED TYPE		
PRELIMINARY	4.5V	PCN-104L3MZ	1-1721066-8	107-79039 (TUBE)	108-79697	PLASTIC SEALED TYPE		
PRELIMINARY	3V	PCN-103L3MZ	1-1721066-7	107-79039 (TUBE)	108-79696	PLASTIC SEALED TYPE		

01

MOLD COLOR  
NATURAL: REINFORCED INSURATION MODEL

THIS DRAWING IS A CONTROLLED DOCUMENT FOR TYCO ELECTRONICS CORPORATION. IT IS SUBJECT TO CHANGE AND THE CONTROLLING ENGINEERING ORGANIZATION SHOULD BE CONTACTED FOR THE LATEST REVISION. TOLERANCES UNLESS OTHERWISE SPECIFIED:		DIMENSIONS: mm	
FINISH: 0 PLC, 1 PLC, 2 PLC, 3 PLC, 4 PLG ANGLES			
APVD: _____		NAME: _____	
CHK: _____		PCN-L3M** CUSTOMER DRAWING	
DWN: _____		TYCO Electronics Shenzhen, China	
APPLICATION SPEC		CAGE CODE 00779	
PRODUCT SPEC		DRAWING NO 1721066	
WEIGHT		SCALE	
CUSTOMER DRAWING		SHEET 3 OF 3	
RESTRICTED TO		REV A	

## X-ON Electronics

Largest Supplier of Electrical and Electronic Components

*Click to view similar products for [General Purpose Relays](#) category:*

*Click to view products by [TE Connectivity](#) manufacturer:*

Other Similar products are found below :

[APF30318](#) [JVN1AF-4.5V-F](#) [PCN-105D3MHZ](#) [5JO-10000S-SIL](#) [5JO-1000CD-SIL](#) [5JO-400CD-SIL](#) [LY2S-AC220/240](#) [LYQ20DC12](#)  
[6031007G](#) [6131406HQ](#) [6-1393099-3](#) [6-1393099-8](#) [6-1393122-4](#) [6-1393123-2](#) [6-1393767-1](#) [6-1393843-7](#) [6-1415012-1](#) [6-1419102-2](#) [6-1423698-4](#) [6-1608051-6](#) [6-1608067-0](#) [6-1616170-6](#) [6-1616248-2](#) [6-1616282-3](#) [6-1616348-2](#) [6-1616350-1](#) [6-1616350-8](#) [6-1616358-7](#) [6-1616359-9](#) [6-1616360-9](#) [6-1616931-6](#) [6-1617039-1](#) [6-1617052-1](#) [6-1617090-2](#) [6-1617090-5](#) [6-1617347-5](#) [6-1617353-3](#) [6-1617801-8](#) [6-1617802-2](#) [6-1618107-9](#) [6-1618248-4](#) [M83536/1-027M](#) [CX-4014](#) [MAHC-5494](#) [MAVCD-5419-6](#) [703XCX-120A](#) [7-1393100-5](#) [7-1393111-7](#)  
[7-1393144-5](#) [7-1393767-8](#)