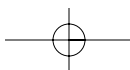


CAT 6 Modular Plug

- Supports CAT 6
- Unique 3 pcs design provides for easy install and optimal performance
- Crimps with a standard RJ45 crimp die
- 50 micron gold contacts
- 8 position, 8 contact
- Suitable for solid or stranded conductors



IDEAL[®] CAT 6 Modular Plug

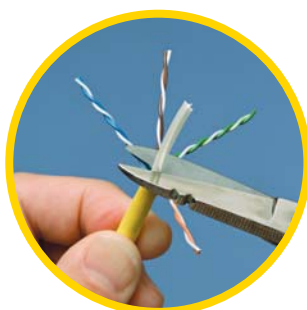
IDEAL CAT 6, RJ45 modular plugs support CAT 6 installations, meeting the TIA/EIA-568-B.2 requirements for NEXT (Near End Cross Talk) and Return Loss. The unique 3 piece design features wire management components to maintain the cable integrity, helping to ensure optimal performance. Plugs include a conductor liner, allowing conductors to be ordered, and held in position for insertion into the plug body, helping to reduce failures. Plugs are crimped using standard RJ45 crimp nests, allowing existing installation tools to be used. High impact nylon, one piece plug body provides durability for repeated insertions.



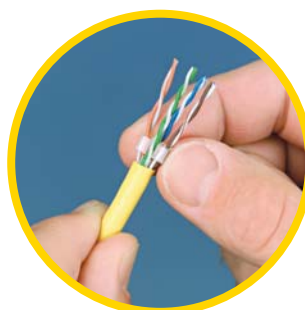
Part No.	Description
85-366	CAT 6 Modular Plugs - 25 pcs



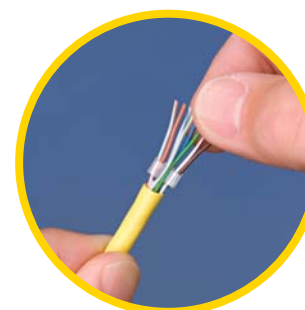
STEP 1
Strip and remove 4" of jacket.



STEP 2
Trim cable cross member.



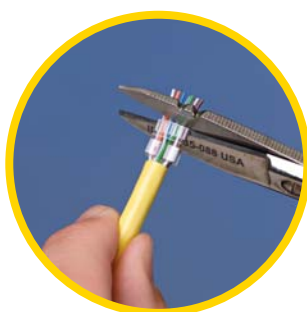
STEP 3
Slide sled over pairs.



STEP 4
Untwist and order pairs.



STEP 5
Slide into liner.



STEP 6
Trim.



STEP 7
Slide assembly into plug body.



STEP 8
Crimp.

IDEAL INDUSTRIES, INC.

Becker Place, Sycamore, IL 60178, USA / 815-895-5181 • 800-435-0705 in USA
 33 Fuller Road, Ajax, Ontario L1S 2E1, Canada / 905-683-3400 • 800-527-9105 in Canada
 225 Europa Boulevard, Gemini Business Park, Warrington, Cheshire, WA5 7TN, UK / +44-(0) 1925 444446
 Gutenbergstrasse 10, 85737 Ismaning, Germany / +49-(0) 89 996860
 Level 6, 75-85 Elizabeth Street, Sydney NSW 2000 Australia / 61300 765 800
 Prof. Americas 1600 4to Piso, Col. Country Club, Guadalajara, Jal. 44610 / 52-33-36789176
 Av. Major Sylvio de M. Padilha, 5200 - 201/F, São Paulo - SP 05677-000 - Brazil / +55-11-3759-8777
 Room 1401, Finance Square, 333 Jiujiang Road, Shanghai 2000001, China / 86-21-6360-7045
 Unit 911, Tower W1, The Towers, Oriental Plaz, No. 1 East Chang An Avenue, Dong Cheng District
 Beijing, 100738, China / Ph: 86-10-8518-3141

www.idealindustries.com

Form No. P-2688
 ©2006 IDEAL INDUSTRIES, INC.

1/06
 Printed in U.S.A.

X-ON Electronics

Largest Supplier of Electrical and Electronic Components

Click to view similar products for [Modular Connectors](#) / [Ethernet Connectors](#) category:

Click to view products by [Ideal manufacturer](#):

Other Similar products are found below :

[RJE231881317T](#) [MP1010RX-1000](#) [MP44RX-1000](#) [GAX-3-66](#) [GAX-8-62](#) [93606-0253](#) [GD-A-44](#) [GDCX-PA-66-50](#) [GDCX-PN-64](#) [GDCX-PN-66](#) [GDCX-PN-66-50](#) [GDLX-A-66](#) [GDLX-A-88](#) [GDLX-N-66](#) [GDLX-S-88K](#) [GDTX-S-88-50](#) [GDX-PA-1010](#) [GLX-N-1010M-BLK](#) [GLX-N-44M](#) [GLX-S-88M-BLK](#) [GMX-N-1010](#) [GMX-S-1010](#) [GMX-S-66](#) [GMX-SMT2-N-1010](#) [GMX-SMT2-N-64-50](#) [GMX-SMT2-S6-88](#) [GMX-SMT4-N-88](#) [GPX-2-64](#) [GRT1-BT1-5](#) [GSGX-N-2-88](#) [GSX-NS2-88-3.05](#) [GSX-NS2-88-3.05-50](#) [GSX-NS-88-3.05-30](#) [GSX-NS-88-3.05-50](#) [GSX-NS-88-3.68](#) [1-1775629-2](#) [GWLX-S-88-GR](#) [GWLX-S9-88-YG](#) [1300500326](#) [1300500227](#) [1300530003](#) [1300570002](#) [1324640-4](#) [RJ11FTVC2G](#) [RJ11FTVC2N](#) [RJFTVX2SA1G](#) [132764-001](#) [1400000](#) [1413176](#) [1413235](#)