

55 Series Enclosures

A very versatile hand held enclosure with customizable end plate and recessed area. IR plate, transparent red plate or standard ABS plate. Now available in 4AA version.

Battery Options:
 No Battery
 2 AA cells
 1 9V cells
 4 AA cells
 Access compartment



Color Options :
 Black
 Gray

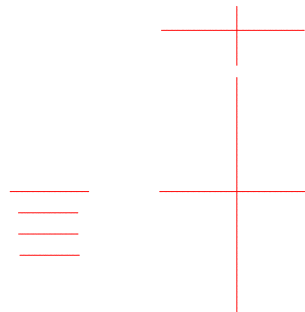
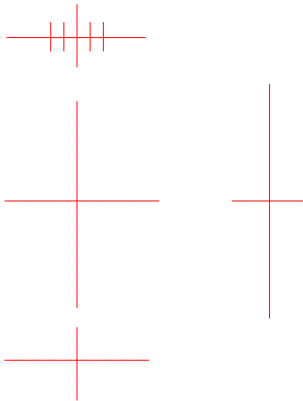
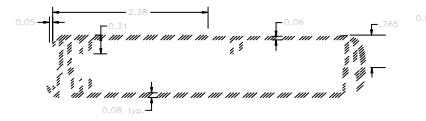
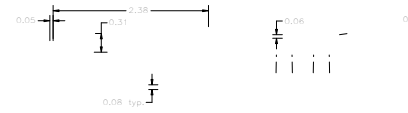
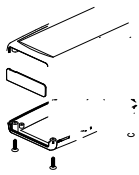
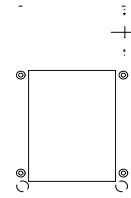
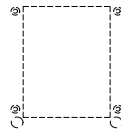
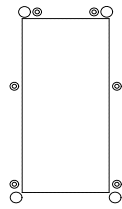
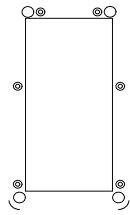
Standard Material Options:
 ABS UL 94 VO (fire retardant)
 ABS UL 94 HB standard

Dimensions:
 (L x W x H)
 4.94 x 2.75 x 0.94
 4.94 x 2.75 x 1.27

	Standard Height		Deep Top Version	
	BLACK	GREY	BLACK	GREY
Dimensions	4.94 x 2.75 x 0.94"	4.94 x 2.75 x 0.94"	4.94 x 2.75 x 1.27"	4.94 x 2.75 x 1.27"
Description	Part No.	Part No.	Part No.	Part No.
Case with NO Battery Compartment	55-12-NO-BL	55-12-NO-GR	55-32-NO-BL	55-32-NO-GR
Case with 2AA Battery Compartment	55-12-2A-BL	55-12-2A-GR	55-32-2A-BL	55-32-2A-GR
Case with 4AA Battery Compartment	55-12-4A-BL	55-12-4A-GR	55-32-4A-BL	55-32-4A-GR
Case with 9V Battery Compartment	55-12-9V-BL	55-12-9V-GR	55-32-9V-BL	55-32-9V-GR
Case with Access Compartment	55-12-AC-BL	55-12-AC-GR	55-32-AC-BL	55-32-AC-GR

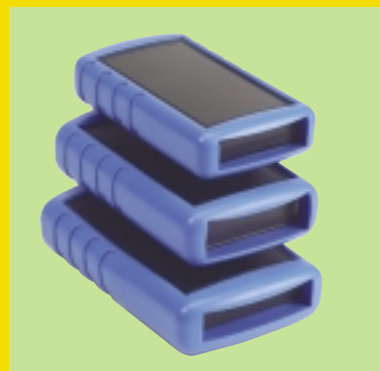
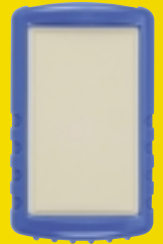
ACCESSORIES

	Light Blue	Dark Blue	Bright Orange	Bright Yellow	Red	Black
Protective Boot w/Integrated tilt bar						



New for 2004

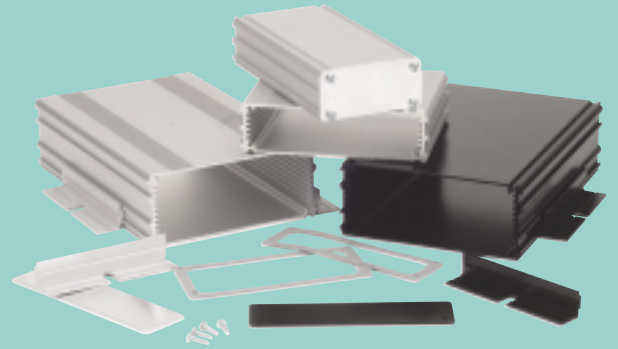
Featuring eight new product lines with protective rubber boots.



NEMA 4 / IP65 Enclosures



Extruded Aluminum



Protective Boots

NEW!



LCD Enclosures

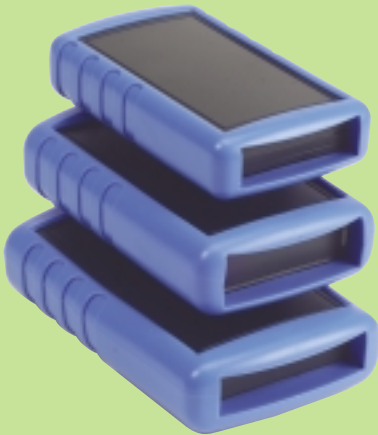


ENCLOSURES & ASSEMBLY SERVICES

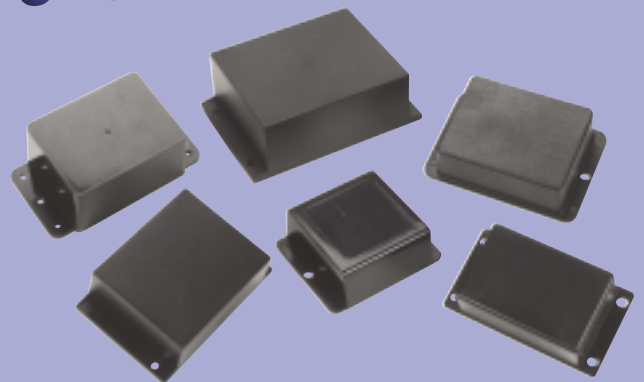
Enclosing electronics one box at a time.



Handheld Enclosures



Flange Cases



See back page for International Distribution Network

X-ON Electronics

Authorized Distributor

Click to view similar products for [Box Enclosures](#) manufacturer.

Other Similar products are found below :

[EC1BK](#) [BMC2055](#) [BMC2075](#) [BMC2095](#) [32112TW](#) [21GGY](#) [101429VRBO](#) [B2160BL](#)
[10142NORBO](#) [4012NORBO](#) [B3160SI](#) [B2080SI](#) [B1120BL](#) [101424ARBL](#) [22GBK](#)
[55129VRGRY](#) [EC2BK](#) [SBH9VBK](#) [40RBTYEL](#) [40129VRBO](#) [B2160SI](#) [10042NOFBL](#)
[BMC207L5](#) [55RBDDBL](#) [40129VFBO](#)