

# EAO – Your Expert Partner for Human Machine Interfaces

84-5030.0020 - Printed

Emergency-stop switch foolproof IEC 60947-5-5

## 84-5030.0020 Printed - Emergency Stop switch foolproof EN IEC 60947-5-5



*Attention: The preview is based on a sample product. This can differ from your current configuration.*

### Mounting

Mounting cut-out Design  $\varnothing$  22.5 mm  
raised

### Front

Front dimension  $\varnothing$  32 mm  
Front shape round

### Other Attributes

Weight 0.028 kg

### Operating-/Indication part

Lens material Plastic  
Lens colour red  
Lens profile Mushroom  
Lens optics opaque

### IP-Rating

Front protection IP 65

### Connection Method

Terminal Plug 2.8 x 0.5 mm

### Actuator

Switching action Maintained

### Switching element

Switching voltage 250 V AC/DC  
Switching current 5 A  
Switching system Slow-make switching element  
Contacts 1 NC + 1 NO  
Contact material Gold

### Illumination

LED colour

### Function

Emergency stop switch

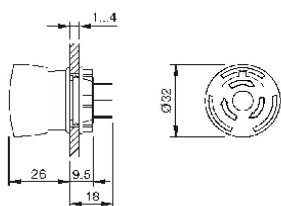
### Marking

Printed in white  
'EMERGENCY STOP'

# EAO – Your Expert Partner for Human Machine Interfaces

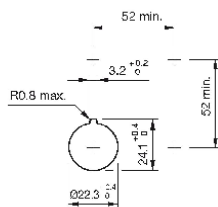
84-5030.0020 - Emergency-stop switch complete, foolproof EN IEC 60947-5-5

## Dimensions

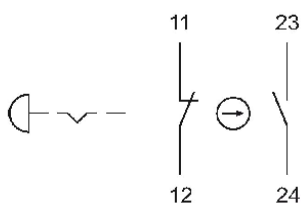


P = Plug-in terminal 2.8 x 0.5 mm

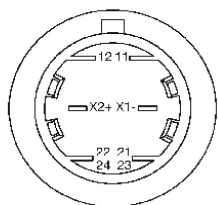
## Mounting cut-outs



## Wiring diagram



## Component layout



## Additional information

Twist to unlock clockwise

Position indication ring black

Application as per DIN EN ISO 13850 and EN 60204-1

Standard version: Flat ribbon-cable length 300 mm or plug-in terminal 2.8 x 0.5 mm

Other options on request: Customisation of flat ribbon-cable and connectors

## Legend

Contacts: NC = Normally closed, NO = Normally open

## X-ON Electronics

Largest Supplier of Electrical and Electronic Components

*Click to view similar products for [eao manufacturer](#):*

Other Similar products are found below :

[01-261.022](#) [02-072.001](#) [61-0029.0](#) [61-1300.0](#) [61-221.50D](#) [61-2601.0/D](#) [61-2701.0/D](#) [61-8640.11](#) [61-8720.17](#) [704.012.0](#) [704.062.218](#)  
[704.101.0](#) [704.113.0](#) [704.117.0](#) [704.411.0](#) [704.411.018I](#) [704.901.1](#) [704.902.3](#) [704.950.0](#) [704.951.0](#) [EUS-704.000.7](#) [82-4151.2144](#) [82-4153.1000](#) [84-8515.8640](#) [92-343.400](#) [95-900.005](#) [14-136.025K](#) [14-810.910](#) [200-4001-00](#) [22-212.011](#) [95-900.009](#) [22-225.011](#) [22-901.2](#) [31-426.036](#) [44-800.4](#) [45-1231.21N6.000.101](#) [45-2134.4F10.000](#) [45-280X.1C90.003](#) [45-2C37.1920.000](#) [45-2T00.10E0.000](#) [51-401.036K](#) [51-901.4](#) [31-953.3](#) [31-955.4](#) [41-461.036](#) [41-908.5/5](#) [45-1131.3150.000.101](#) [45-2131.2150.000](#) [45-2231.21H0.000](#) [45-2231.31H0.000](#)