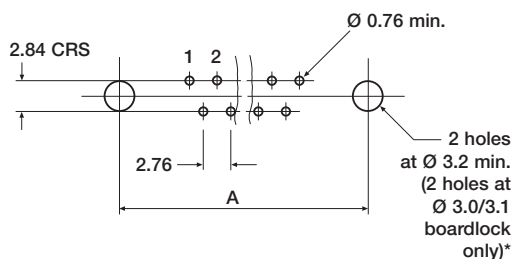


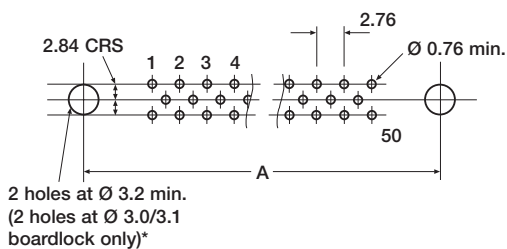
PCB layouts

Plug viewed from above,
socket viewed from below.

Straight p.c. 9-37 way



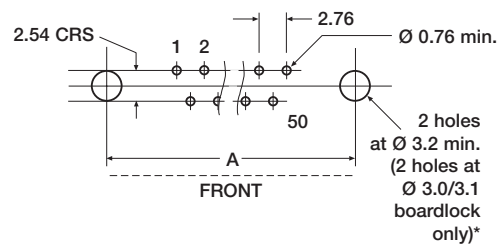
50 way



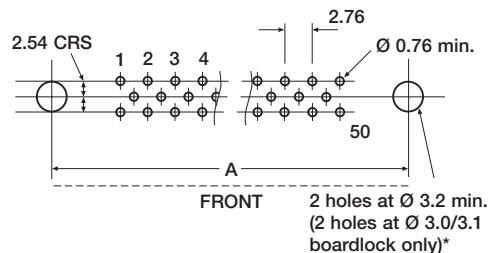
DIMENSIONS

Contact Arrangement	A crs
9	25.00
15	33.32
25	47.04
37	63.50
50	61.10

90° p.c. 9-37 way



50 way

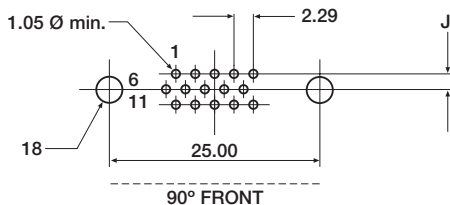


*Special D only

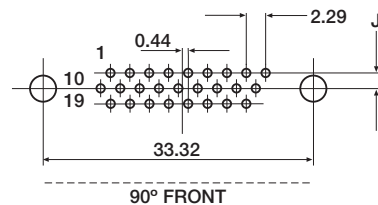
High Density D only

Plug viewed from above,
socket viewed from below.

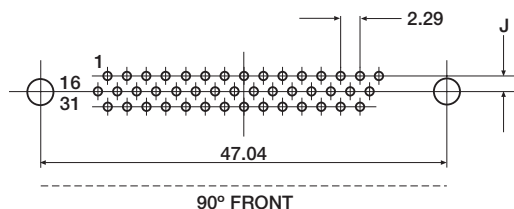
15 way High Density D



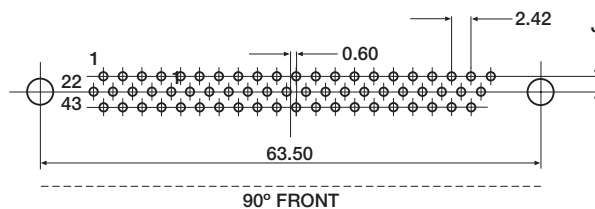
26 way High Density D



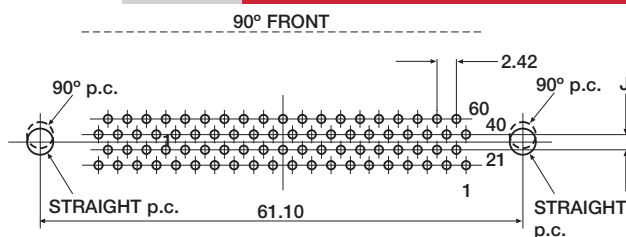
44 way High Density D



62 way High Density D



78 way High Density D



DIMENSIONS

Contact Arrangement	Straight p.c J	90° p.c J
15	1.98	2.54
26	1.98	2.54
44	1.98	2.54
62	1.98	2.54
78	2.08	2.54

ORDERING information

for CONNECTORS

Series

D – Standard/Budget/Crimp
SD – Special D
LD – Special D 90° p.c. alternative
HD-High Density

Shell size

E, A, B, C and D

Mounting options/crimp select

No designator – Standard fixing holes
B – 90° brackets and stabiliser rivetted (fitted on 50 and 90° p.c. as standard)
F – Float mount for rear panel mounting
R – Reverse float mounting
G – MP501 rivetted
H – 4-40 UNC threaded inserts fitted
K – MP625 and screwlock fitted
L – MP501-2 screw mounted
N – 90° brackets and stabiliser with screwlock fitted
S – Screwlock fitted
T – Boardlocks fitted
X – Screwlocks and Boardlocks fitted
C-Crimp (contacts ordered separately)

Shell finish

No designator – Zinc/yellow passivate
T – Tinned (socket only)
TD – Tinned and dimpled (plug only)

Performance code

No designator – standard, HD, special, crimp
B – Budget

Termination type

No designator – Solder bucket (and crimped when selector code has been used)
N – 90° p.c.
OL – Straight p.c.
W – Wire wrapping

Contact type

P – Plug S – Socket

Contact arrangement

9, 15, 25, 37 and 50
High Density 15, 26, 44, 62 and 78

CONTACT ORDERING INFORMATION

Contact/Wire Gauge

MP642-Pin, 24/28 A.W.G (HD only)
MP643-Socket, 24/28 A.W.G (HD only)
MP647-Pin, 24/28 A.W.G (crimp D only)
MP648-Socket, 24/28 A.W.G (crimp D only)
MP649-Pin, 20/24 A.W.G (crimp D only)
MP650-Socket, 20/24 A.W.G (crimp D only)

MP642

R

06

Method of supply

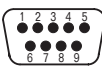
No designator – in packs of 100
R – 10,000 on a reel

Performance Code

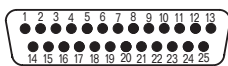
High Density
05-Pin, 200 operations
06-Pin, 50 operations
15-Socket, 200 operations
16-Socket, 50 operations
Crimp D
45-Pin, standard 500 operations
46-Pin, budget 300 operations
55-Socket, standard 500 operations
56-Socket, budget 300 operations

CONTACT ARRANGEMENT (viewed from mating face of male connector)

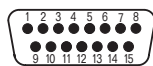
Special, Standard and Crimp D



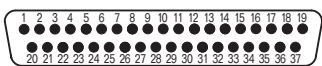
E - 9 contacts



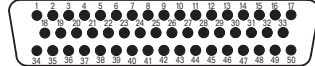
B - 25 contacts



A - 15 contacts

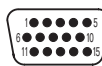


C - 37 contacts



D - 50 contacts

High Density D



E - 15 contacts



B - 44 contacts



A - 26 contacts



C - 62 contacts



D - 78 contacts

Accessories

A range of accessories are available including automatic and hand crimp tools, insertion and extraction tools – ask our sales office for details.

Due to our policy of continuous product development, ITW McMurdo Connectors retain the right to change the specification at any time without prior notice. Designed & printed in the UK.

ITW McMurdo Connectors

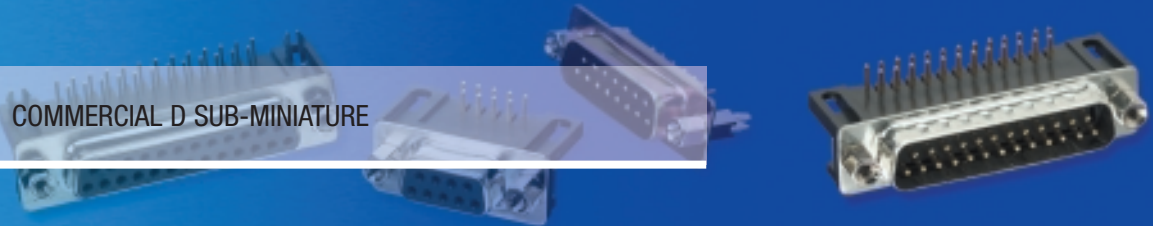
Division of ITW Limited
Norway Road
Hilsea
Portsmouth
PO3 5HT
United Kingdom
Tel: 02392 656200
Fax: 02392 666352
e-mail: info@itwmcmurdo.co.uk
www.itwmcmurdo.co.uk





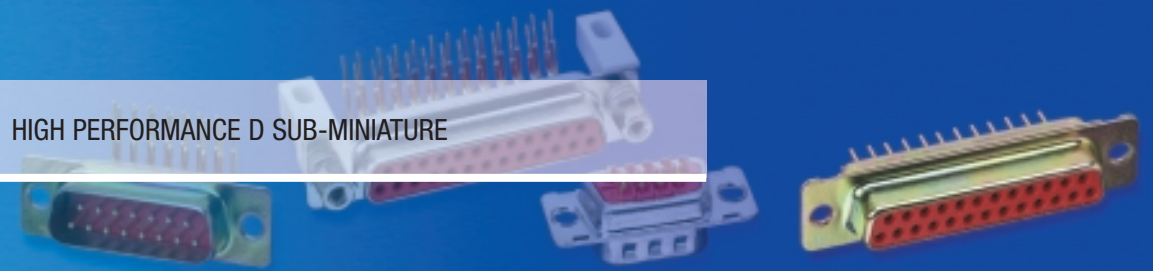
D range connectors

Special D



COMMERCIAL D SUB-MINIATURE

Standard D



HIGH PERFORMANCE D SUB-MINIATURE

Crimp D



FLEXIBLE AND FAST ASSEMBLY D SUB-MINIATURE

High Density D



INCREASED DENSITY D SUB-MINIATURE

D Accessories

Special D

A range of D connectors utilising stamped and formed or turned contacts to provide a low cost option for commercial applications.

COMMERCIAL D SUB-MINIATURE



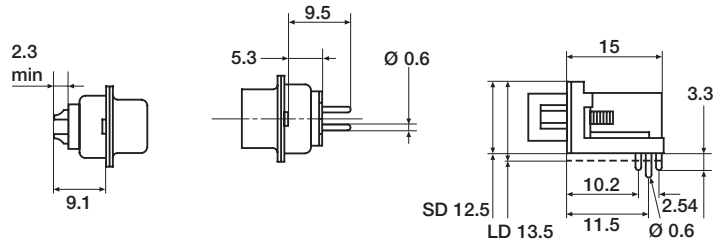
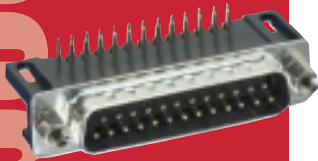
FEATURES

Choice of three termination styles – solder bucket, straight p.c. and 90° p.c.

Optional solderable boardlock features for 90° p.c. types – reduces installation time.

Threaded inserts on 90° p.c. versions as standard – accepts a wide range of mounting hardware.

Tinned and dimpled shell options – for EMI/RFI shielding.



Solder Bucket

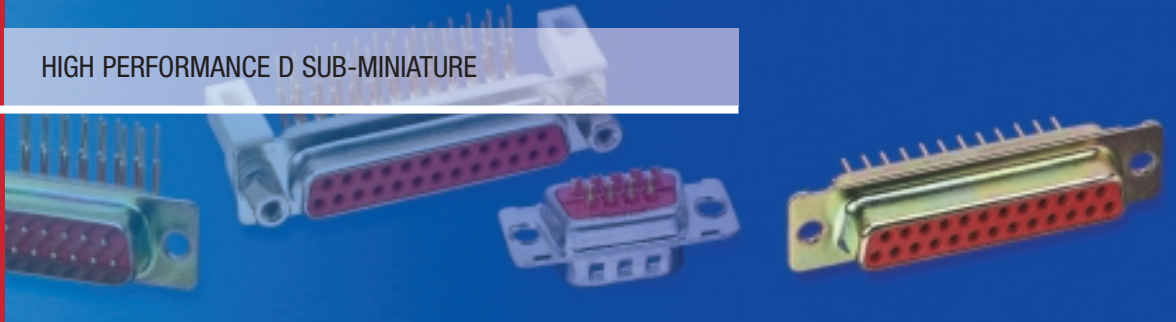
Straight P.C.

90° P.C.

Standard D

Designed for demanding industrial applications, McMurdo's D connectors offer precision turned contacts in two performance levels: Standard D offers a minimum of 500 operations. Budget D has been developed for harsh industrial applications offering 300 operations.

HIGH PERFORMANCE D SUB-MINIATURE



FEATURES

Standard D meets the most demanding requirements.

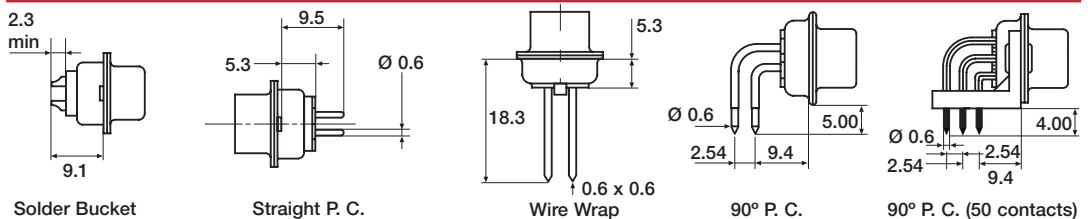
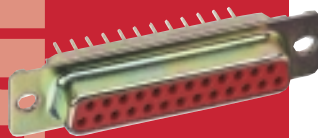
Available in five shell sizes, providing up to 50 contacts.

Tinned and dimpled shell options – for EMI/RFI shielding.

Precision turned contacts.

Solder bucket, straight p.c., 90° p.c. and wire wrapping termination styles – to suit all your applications.

Wide range of accessories – greater user flexibility.



Solder Bucket

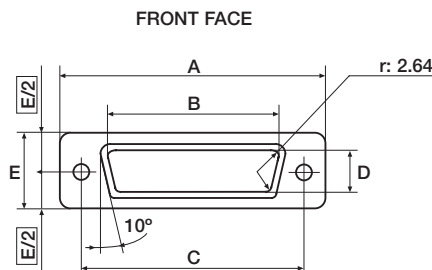
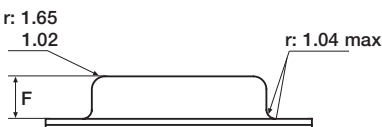
Straight P.C.

Wire Wrap

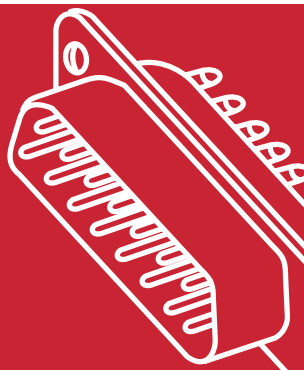
90° P.C.

90° P.C. (50 contacts)

All ranges: male



No. of contacts	A	B	C	D	E	F
9	31.19	17.04	25.12	8.48	12.93	6.12
	30.43	16.79	24.87	8.23	12.17	5.82
15	39.52	25.37	33.45	8.48	12.93	6.12
	38.76	25.12	33.20	8.23	12.17	5.82
25	53.42	39.09	47.17	8.48	12.93	5.99
	52.65	38.84	46.91	8.23	12.17	5.69
37	69.70	55.55	63.63	8.48	12.93	5.99
	68.94	55.30	63.37	8.23	12.17	5.69
50	67.34	52.93	61.24	11.33	15.75	5.99
	66.55	52.68	60.99	10.95	14.99	5.69



Technical Data

FEATURES

- Shell
- Insulator
- Contact
- Termination – solder bucket
 - straight PC
 - 90° PC
 - CRIMP

MECHANICAL

- Operations
- Temperature range

ELECTRICAL

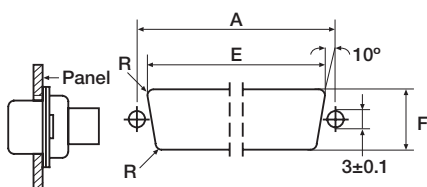
- Current – individual contact (in isolation) at 70°C
 - All contacts (simultaneously) at 70°C
- Working voltage (DC or AC PEAK)
- Proof voltage (DC or AC PEAK)
- Contact resistance
- Insulation resistance

D range connectors

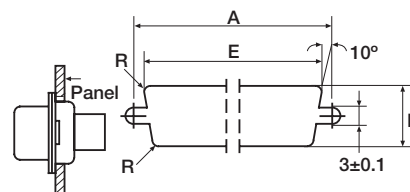
	Special D	Standard D	Crimp D	High Density D
Shell	Steel plated zinc/yellow passivate or tin			
Insulator	Thermoplastic rated UL94V-0			
Contact	Copper alloy plated hard acid gold			
Termination – solder bucket	Tin	Gold	–	Tin
– straight PC	Tin	Gold	–	Tin
– 90° PC	Tin	Gold	–	Tin
– CRIMP	–	–	Tin or Gold	Tin
Operations	100	300 (budget) 500 (standard)	300 (budget) 500 (standard)	100 50 or 200 crimp
Temperature range	-55°C to +105°C			
Current – individual contact (in isolation) at 70°C	3A	6.5A	3A	3A
– All contacts (simultaneously) at 70°C	2A	3.3A	2A	2A
Working voltage (DC or AC PEAK)	350V	500V	350V	300V
Proof voltage (DC or AC PEAK)	1500V	1500V	1500V	1000V
Contact resistance	15mΩ max	10mΩ max	15mΩ max	15mΩ max
Insulation resistance	5000mΩ min	1000mΩ min	5000mΩ min	1000mΩ min

All ranges: panel mounting options

Shell size	Contact Arrangement		Rear Panel Mounting						Front Panel Mounting								
	No of Contacts D,SD,LD	HD	A	Std	E	Float	Std	F	Float	R	Std	E	Float	Std	F	Float	R
E	9	15	25.00	20.32	21.16	11.30	12.09	3.50	22.07	22.88	12.90	13.71	2.25				
A	15	26	33.32	28.70	29.49	11.30	12.09	3.50	30.40	31.22	12.90	13.71	2.25				
B	25	44	47.04	42.42	43.20	11.30	12.09	3.50	44.14	44.96	12.90	13.71	2.25				
C	37	62	63.50	58.93	59.77	11.30	12.09	3.50	60.60	61.42	12.90	13.71	2.25				
D	50	78	61.10	56.26	57.02	13.97	14.78	3.50	58.21	59.44	15.69	16.51	2.25				



Rear Panel Mounting



Front Panel Mounting

Crimp D

Maximum flexibility and reduced assembly costs are achieved through full or partial loading of selectively plated stamped and formed contacts.

FLEXIBLE AND FAST ASSEMBLY D SUB-MINIATURE



FEATURES

Replaceable contacts – no connector wastage.

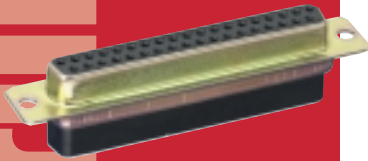
Two contact performance levels – Budget for commercial and Standard for industrial applications.

Accepts wire sizes of 20 to 28 AWG – offers greater flexibility.

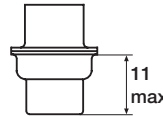
Tinned and dimpled shell options – for effective EMI/RFI shielding.

Complete selection of crimp tooling enables quick assembly.

Wire strip length 2.4 ± 0.2mm.



ASSEMBLY TOOLS AND HAND TOOLS



Crimp

Hand Crimp Tool MP600-D/HD
Insertion/extraction tool MP601-D or MP601-HD

High Density D

Increased contact density is provided in five industry standard shell sizes providing up to 78 contacts. A choice of four termination styles including crimp are available making this range one of the most versatile.

INCREASED DENSITY D SUB-MINIATURE



FEATURES

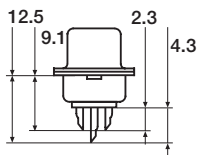
Tinned and dimpled shell as standard for enhanced electrical continuity and effective EMI/RFI shielding.

Threaded inserts – enable quick assembly of mounting hardware to 90° p.c. versions.

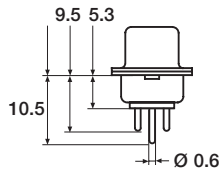
Optional screwlocks and solderable boardlocks fitted to 90° p.c. versions.

Solder bucket, straight p.c. 90° p.c. and crimp termination styles.

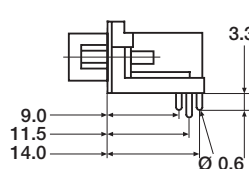
Compatible with Standard D range accessories.



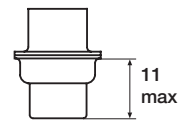
Solder Bucket



Straight P.C.

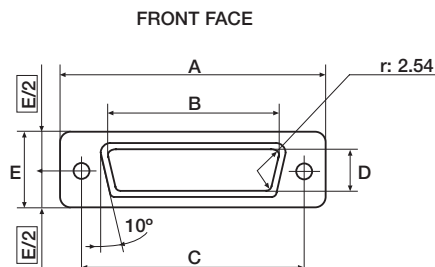
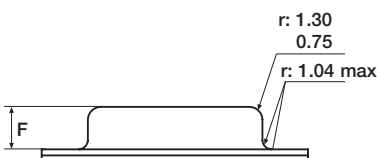


90° P.C.



Crimp

All ranges: female



No. of contacts	A	B	C	D	E	F
9	31.19	16.46	25.12	8.03	12.93	6.30
	30, 43	16.21	24.87	7.77	12.17	6.05
15	39.52	24.79	33.45	8.03	12.93	6.30
	38.76	24.54	33.20	7.77	12.17	6.05
25	53.42	38.51	47.17	8.03	12.93	6.30
	52.65	38.25	46.91	7.77	12.17	6.05
37	69.70	54.97	63.63	8.03	12.93	6.30
	68.94	54.71	63.37	7.77	12.17	6.05
50	67.34	52.56	61.24	10.87	15.75	6.30
	66.55	52.30	60.99	10.62	14.99	6.05

X-ON Electronics

Largest Supplier of Electrical and Electronic Components

Click to view similar products for [itw switches manufacturer](#):

Other Similar products are found below :

[MP648-16\(50\)](#) [SDBS25PN](#) [76-1024](#) [48M-111B](#) [76-959034](#) [181541B](#) [MDJ15](#) [DA15POLF](#) [48M-111G](#) [22-204](#) [DC37PF](#) [DB25SNF](#) [DB25SF](#)
[76-9510/4044](#) [49-59115](#) [40-2-5](#) [76-9513/4044G](#) [76-9113/439088](#) [SDAX15SNT](#) [SDD50PTD](#) [59-900091](#) [48M210N](#) [ES1020](#) [SDB25PNTD](#)
[DE9SNF](#) [DAC15P](#) [H48M-112B/4044](#) [40-2-10](#) [57-112R](#) [76-9116/439088](#) [DE9PF](#) [HDAX26SNT](#) [48-1-RB-G-BK-B](#) [76-9112/439088](#)
[48M112R](#) [H48M-112G/4044](#) [57M110N](#) [H48M-212B/4044](#) [H48M-212R/4044](#) [57M-211B](#) [49-59116](#) [4959213](#) [48M110N](#) [1640401](#) [76-](#)
[9711/439088R](#) [76-9440/439088B](#) [48-1-RB-R-BK-B](#) [76-1266](#) [76-9450/439088R](#) [11-304](#)