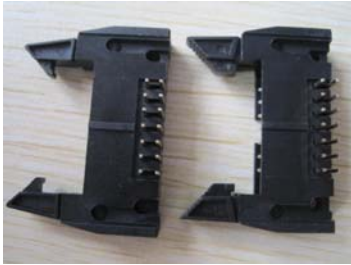


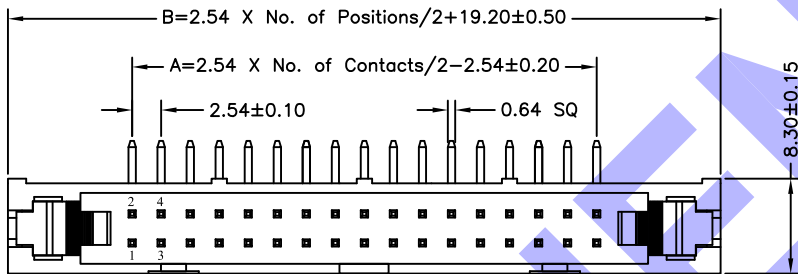
T816 - X XX XX XX XX C EU

T816 Series
2.54mm pitch

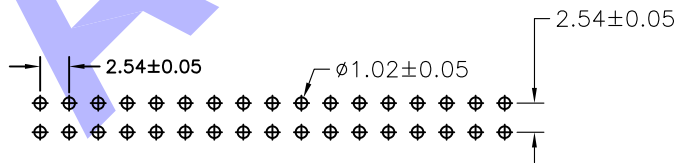
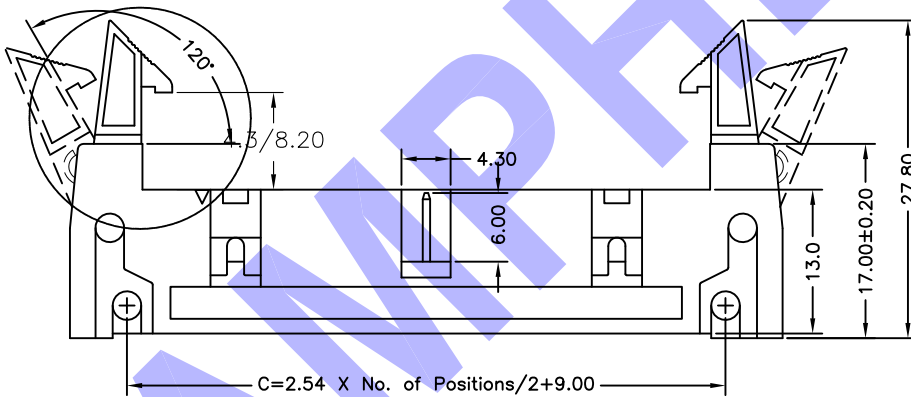


Housing Color	No of Positions	Plating Options	Termination	Variation Code	C	EU:
0: Grey 1: Black	06: 6 positions : : 64: 64 positions	A1: Gold flash over 50u" Ni A2: 15u" gold over 50u" Ni A3: 30u" gold over 50u" Ni SN: Full Tin over 50u" Ni	S1: Straight THT R1: Right Angled THT	00: w/o Latch 01: Short Latch 02: Long Latch	: Fixed index	ROHS Compliant

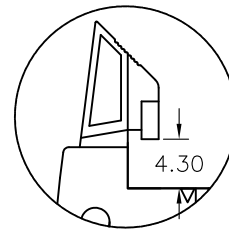
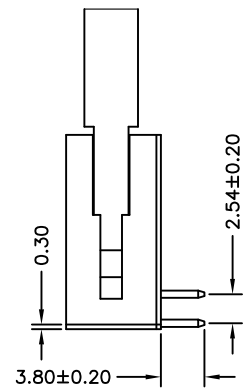
T816-XXXXXR1XXCEU
(R/A DIP)



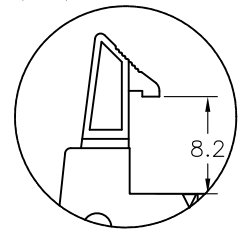
No. of PINS	Dimension Information		
	A	B	C
06	5.08	26.82	16.62
08	7.62	29.36	19.16
10	10.16	31.90	21.70
14	15.24	36.98	26.78
16	17.78	39.52	29.32
18	20.32	42.06	31.86
20	22.86	44.60	34.40
24	27.94	49.68	39.48
26	30.48	52.22	42.02
30	35.56	57.30	47.10
34	40.64	62.38	52.18
40	48.26	70.00	59.80
50	60.96	82.70	72.50
60	73.66	95.40	85.20
64	78.74	100.48	90.28



Recommended PCB Layout



Short Latch



Long Latch

General Specification

Materials and Finish:
Insulator: PBT+25%G.F, UL 94V-0,
Contact: Brass, Gold or Tin Plated
 Over 50u" Ni

Electrical:
Contact Resistance: 20 mΩ max. at 1A DC
Insulation Resistance: 1000 MΩ min, at 500V/DC
Dielectric Withstanding Voltage: 500 V/AC RMS 60Hz for one minute.
Current Rating: 3.0A max.
Voltage Rating: 250V AC/RMS 60Hz, DC

Environment:
Operating Temperature:
 -40 °C to +105 °C

T816 - **X** **XX** **XX** **XX** **XX** **C** **EU**

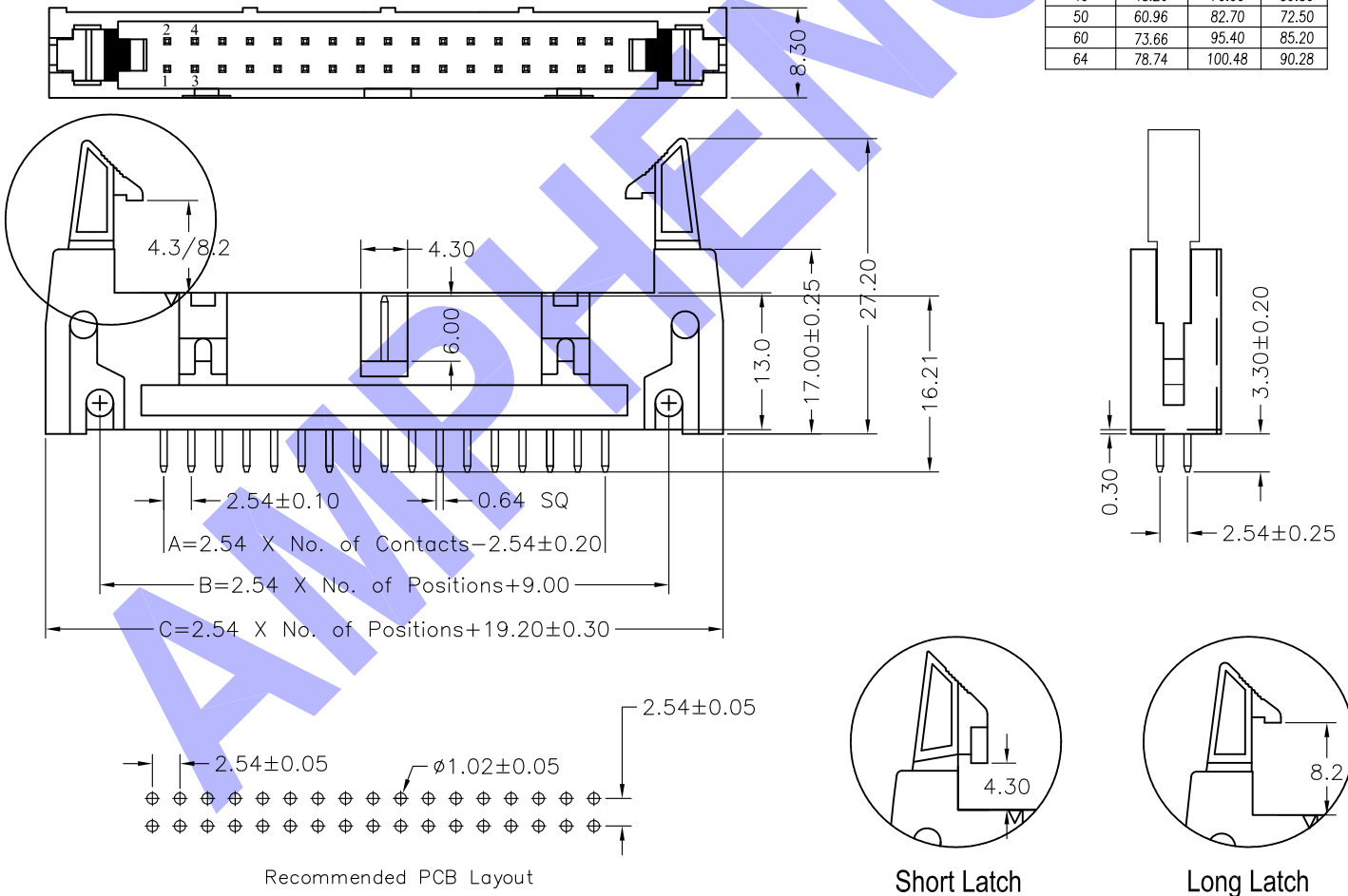
T816 Series
2.54mm pitch



T816-XXXXXS1XXCEU
(ST DIP)

Housing Color	No of Positions	Plating Options	Termination	Variation Code	C	EU:
0: Grey 1: Black	06: 6 positions : : 64: 64 positions	A1: Gold flash over 50u" Ni A2: 15u" gold over 50u" Ni A3: 30u" gold over 50u" Ni SN: Full Tin over 50u" Ni	S1: Straight THT R1: Right Angled THT	00: w/o Latch 01: Short Latch 02: Long Latch	: Fixed index	ROHS Compliant

No. of PINS	Dimension Information		
	A	B	C
06	5.08	26.82	16.62
08	7.62	29.36	19.16
10	10.16	31.90	21.70
14	15.24	36.98	26.78
16	17.78	39.52	29.32
18	20.32	42.06	31.86
20	22.86	44.60	34.40
24	27.94	49.68	39.48
26	30.48	52.22	42.02
30	35.56	57.30	47.10
34	40.64	62.38	52.18
40	48.26	70.00	59.80
50	60.96	82.70	72.50
60	73.66	95.40	85.20
64	78.74	100.48	90.28



General Specification

Materials and Finish:
Insulator: PBT+25%G.F, UL 94V-0,
Contact: Brass, Gold or Tin Plated
 Over 50u" Ni

Electrical:
Contact Resistance: 20 mΩ max. at 1A DC
Insulation Resistance: 1000 MΩ min, at 500V/DC
Dielectric Withstanding Voltage: 500 V/AC RMS 60Hz for one minute.
Current Rating: 3.0A max.
Voltage Rating: 250V AC/RMS 60Hz, DC

Environment:
Operating Temperature:
 -40 °C to +105 °C

X-ON Electronics

Largest Supplier of Electrical and Electronic Components

Click to view similar products for [amphenol manufacturer](#):

Other Similar products are found below :

[CTV06RGQF-17-52P](#) [CTVPS00RGF-23-6P-LC](#) [JTPQ00RT-16-35P\(453\)](#) [GC835TY2S](#) [CF-509621-29P](#) [BF8-1218-31SV-Y70](#) [TVP00RGW-23-6SA\(LC\)](#) [RNJ27CI1535P014](#) [10-553998-139](#) [21-033388-031](#) [10-507142-843](#) [GTS06G-32-7S](#) [GTC06-36-78PX-023](#) [ACC02E28-51S-003-B30-LC](#) [TV06RL-13-35SD-LC](#) [TV06RL-13-35SD](#) [TV06RL-13-98SD-LC](#) [TV06RL-13-98SD](#) [GTC08AF32-15SX-B30-LC](#) [GTC06G32-76PZ](#) [TVP00RW-23-53AD](#) [100-007-213-002-001](#) [5M30-61](#) [JT07RT-22-14PB-453](#) [FSPP-103-00-004](#) [360031](#) [10-037090-161](#) [10-541504-001](#) [10-580902-409](#) [TV97RW-9-9S\(S15\)](#) [TVPS00RGF-9-5P-LC](#) [TVPS00RGF-9-5PA-LC](#) [TVP00RGQW-21-75P-LC](#) [TV06RW-25-90AE](#) [97-3108B16S-5PW-417](#) [PT06J20-24SW](#) [97-3108B16S-4PY-417](#) [97-3108B16S-4PX-417](#) [97-3108B16S-5PY-417](#) [97-3108B16S-4PW-417](#) [CS-DSDMDB37MF-025](#) [97-3108B16S-5PZ-417](#) [TV06RW-25-46AE](#) [TVS07RF-21-16AA](#) [TVS07RF-21-39BA](#) [60261626SNCOND1](#) [SE00TVW09](#) [CF-5A9013-04N](#) [CF-6A4615-06N](#) [GTS01-22-22PX-025-116](#)