

DIN Valve Connectors - VAD 1A/1B Series

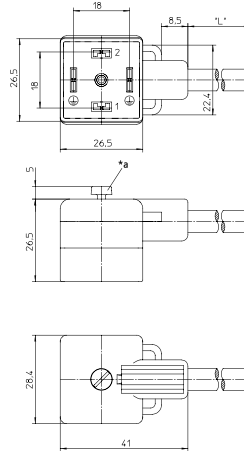
VAD 1A



Actuator cordset, single-ended, valve connector according to DIN EN 175301-803, form A, with LED function indicator, varistor voltage protection, connected protective earth

VAD 1A-1-3: 24 V AC
VAD 1A-2-3: 110 V AC
VAD 1A-3-3: 230 V AC

VAD 1A

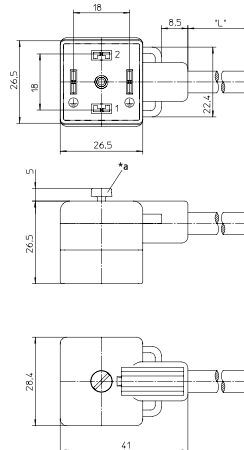


VAD 1B



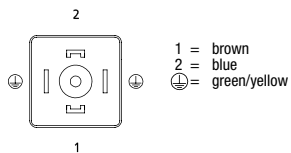
Actuator cordset, single-ended, valve connector according to DIN EN 175301-803, form A, with LED function indicator, suppressor diode voltage protection, connected protective earth

VAD 1B



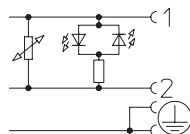
Pin Assignments

VAD 1A / VAD 1B

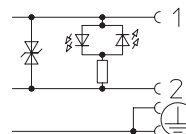


Wiring Diagram

VAD 1A



VAD 1B





DIN Valve Connectors - VAD 1A/1B Series

VAD 1A-X-3-XXX and VAD 1B-1-3-XXX

Technical Data

Environmental

Degree of protection IP 67
Operating temperature range -25°C / +80°C

Mechanical

Housing / Molded body TPU, self-extinguishing
Insert PBT
Contact CuZn, nickel-plated and tin-plated

Electrical

Contact resistance $\leq 5 \text{ m}\Omega$
Nominal current at 40°C 4 A
Nominal voltage VAD 1A-1-3: 24 V
VAD 1A-2-3: 110 V
VAD 1A-3-3: 230 V
Rated voltage 32 V
Insulation resistance $> 10^9 \Omega$
Pollution degree 3

Varistor data (VAD 1A – 24 V AC)

Nominal voltage 47 V at 0.1 mA
Typ. limiting voltage 110 V at 5 A
Max. pulse energy (standard impulse 10/1000us) 0.9 Ws
Max. continuous power loss 0.01 W

Supressor diode data (VAD 1B)

Nominal voltage 47 V at 1 mA
Max. limiting voltage 68 V at 8.9 A
Typ. limiting voltage 60 V at 5 A
Max. pulse current (pulse shape 10/1000us) 8.9 A
Max. pulse power (pulse shape 10/1000us) 600 W
Max. continuous power loss 0.5 W

Accessories (incl.)

Attachable label
Screw (fitted)

Part Number	Poles	Outer Jacket	Characteristics
VAD 1A-1-3-212/... M VAD 1B-1-3-212/... M	⊕	PVC	
VAD 1A-2-3-212/... M		PVC	
VAD 1A-3-3-212/... M	2 +	PVC	
VAD 1A-1-3-226/... M VAD 1B-1-3-226/... M		PUR halogen free	
VAD 1A-2-3-226/... M		PUR halogen free	
VAD 1A-3-3-226/... M		PUR halogen free	

Standard lengths: 2 M / 5 M / 10 M
Other cable lengths or cable specifications available upon request.

The application of these products in harsh environments should always be checked before use.

X-ON Electronics

Largest Supplier of Electrical and Electronic Components

Click to view similar products for [Sensor Cables / Actuator Cables](#) category:

Click to view products by [Lumberg](#) manufacturer:

Other Similar products are found below :

[1300070444](#) [43-10984](#) [M83513/19-F01CP](#) [704000D02F120](#) [MDM15SH001K](#) [MDM25PH003BF222](#) [802027107404-1](#) [885030A09M010](#)
[885030A09M020](#) [1200650174](#) [1200651332](#) [1200651713](#) [1200660171](#) [1200660208](#) [1200660343](#) [1200660804](#) [1200660845](#) [1200660926](#)
[1200660977](#) [1200661173](#) [1200661354](#) [120066-1712](#) [1200720053](#) [1200720099](#) [1200720153](#) [1200720172](#) [1200720217](#) [1200720226](#)
[1200720251](#) [1200720285](#) [1200720296](#) [1200720404](#) [1200730148](#) [1200730378](#) [1200800231](#) [1200860112](#) [1200860121](#) [1200860125](#)
[1200860337](#) [1200860365](#) [1200860420](#) [1200870046](#) [1200870123](#) [1200870248](#) [1200980102](#) [1200660181](#) [1200660183](#) [1200660827](#)
[1200660849](#) [1200661170](#)