



1 HV100

36mm Hand Vice

Hand held vice for the secure clamping of component parts prior to grinding, drilling, etc. Carton packed.

Stock No.	Jaw Opening	Box Qty	Price each
30785	19mm	-	£7.32



2 1709T

75mm Bench Vice

Cast iron with serrated curved jaws. Bench clamping screw 40mm capacity manufactured from zinc plated carbon steel. Display packed. Display carton.

Stock No.	Jaw Opening	Box Qty	Price each
38267	58mm	-	£20.10



3 VAC10/L

75mm Vacuum Vice

Versatile swivel vice with powerful suction base which fixes to any smooth surface. Swivelling head allows many varied positions. V grooved jaws for holding cylindrical and irregular shapes. Supplied with removable soft rubber safety jaw covers. Display carton.

Stock No.	Jaw Opening	Box Qty	Price each
45245	70mm	-	£33.48

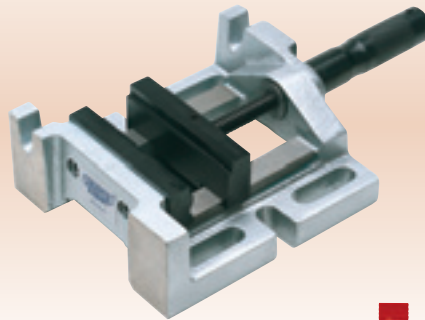


4 DPV70/B

'Quick Action' Drill Press Vice

Manufactured from cast aluminium with hardened jaws. 'Quick action' release at rear of vice allows jaws to be opened quickly. Display carton.

Stock No.	Jaw Width	Jaw Opening	Box Qty	Price each
40390	70mm	67mm	-	£19.18

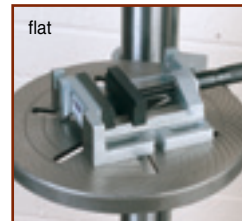
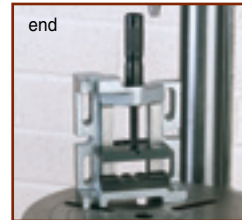


5 DPV100/3

3 Way 100mm Drill Press Vice

Expert Quality, with three accurately ground mounting surfaces for drilling holes at 90°. Precision ground jaws. Carton packed.

Stock No.	Jaw Opening	Box Qty	Price each
64585	85mm	-	£67.44



three positions
for many applications



6 ANV

4.5kg Anvil

Single bick cast iron anvil, bolt down pattern. Grey cast iron. Oblong working surface 120 x 65mm. Display carton.

Stock No.	Box Qty	Price each
35481	-	£19.34



BENCH AND FLOOR STANDING WORKSHOP DRILLS

Item Nos. 4 and 5 Drill Press Vices are ideal for use in the workshop in conjunction with the Draper Range of Bench and Floor Standing Workshop Drills.

See pages 474-476 for the Draper Range of Bench and Floor Standing Workshop Drills.



Prices are list, each and exclude VAT.

X-ON Electronics

Largest Supplier of Electrical and Electronic Components

Click to view similar products for [draper](#) manufacturer:

Other Similar products are found below :

[Draper](#)