

ARM-based Pico-ITX Series

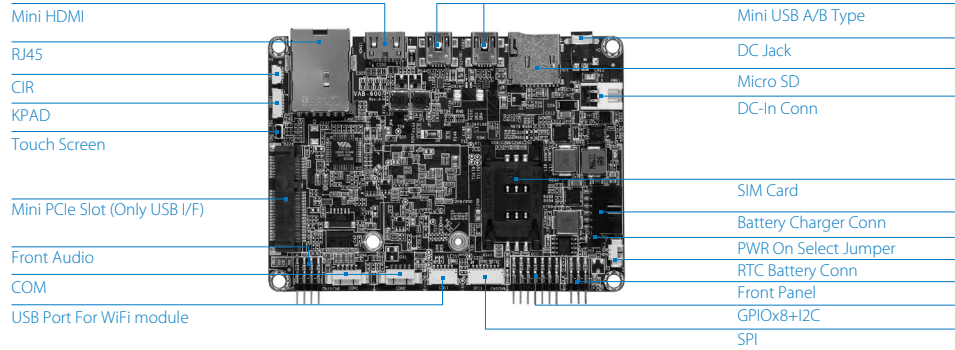
VIA VAB-600

Pico-ITX Cortex-A9 Board
with Mini-USB, Mini-HDMI,
COM and LAN

Features

- Supports integrated graphics processing (GPU) for 3D/2D graphics acceleration
- Supports Android 4.0 and Embedded Linux
- Optional support 3G module
- Supports two COM ports (support Tx/Rx)
- Supports 12~24V DC-in
- Flexible display choices: Mini-HDMI, LVDS and TTL (optional)

Board Placement

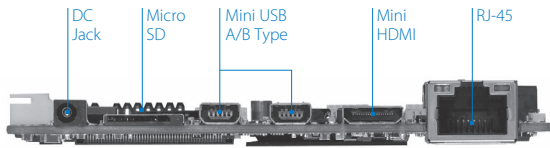


Specifications

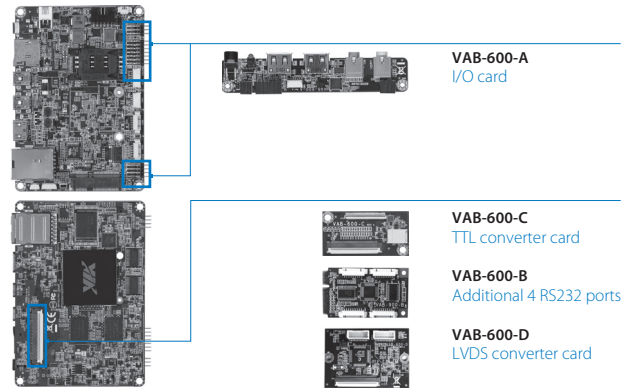
Model Name	VAB-600
Processor	Cortex-A9 single core WM8950 @800MHz
System Memory	1 x Onboard DDR3 1066 1GB
Flash Storage	1 x Onboard 512KB SPI Flash for Boot Loader 1 x Onboard 4GB eMMC Flash
Graphics and Video	Built-in 2D/3D Graphic Engine to support OpenGL® ES 2.0 Built-in video multi-standard decoder to support MPEG2 MP@HL, MPEG4, H.264 BP/MP/HP@L4.0, VC-1 SP/MP/AP, VP8 and JPEG/MJPEG decoding
Audio	VIA VT1603A I2S Audio Codec
Ethernet	VIA VT6113 10/100 base-TX PHY chip
WiFi Module	Optional VIA VNT9271B6050 WiFi module (shared with one USB port)
Onboard I/O	1 x DVO connector for TTL or LVDS display (the corresponding daughter card is required) 2 x COM connectors (supports Tx/Rx) 1 x Micro-SD card reader connector 1 x RTC battery pin header 1 x USB 2.0 connector 1 x SPI connector for programming SPI Flash ROM 1 x Mini card slot (supports USB 2.0 connectivity for optional 3G module) 1 x SIM card slot (supports the 3G module without built-in SIM card slot) 1 x Keypad connector 1 x CIR connector 1 x Front audio pin header for Line-in, Line-out and MIC-in 1 x Front panel pin header for system power-on, reset and power LED 1 x 4-wire resistive touch screen FPC connector (through VT1603A) 1 x Miscellaneous pin header for 1 I2C pair and 8 GPIOs 1 x 12~24V DC-In connector 1 x Battery charger connector with smart battery function (manufacturing option)
Back Panel I/O	2 x Mini-USB 2.0 (type A/B) ports 1 x Mini-HDMI port 1 x RJ-45 LAN port 1 x 12~24V DC-in Jack
Operating System	Android 4.0 and Embedded Linux
Operating Temperature	0°C up to 60°C
Operating Humidity	0% ~ 95% (relative humidity ; non-condensing)
Form Factor	Pico-ITX, 10 cm x 7.2 cm (3.9" x 2.8")



Back Panel I/O



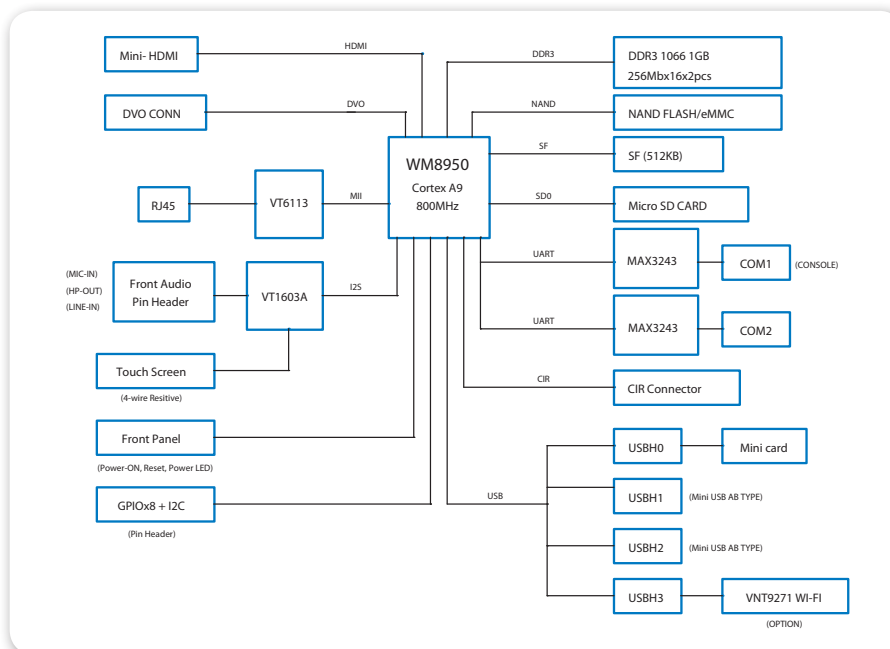
Accessories



Ordering Information

Model Name	CPU Frequency	Description
VAB-600	WM8950 @800MHz	Pico-ITX Board with 800MHz Cortex-A9 CPU, 4GB Flash, 1GB SDRAM, 2 x Mini-USB 2.0, 1 x Mini-HDMI, 2 x COM, 1 x LAN, 12~24V DC-in power

Block Diagram



Packing List

Items
1 x VAB-600 board
1 x DC-in cable
1 x Front panel cable
1 x Front audio cable
1 x COM connector cable
1 x USB cable (for optional WiFi USB module)

Items for Starter Kit
1 x VAB-600 board
1 x VAB-600-A
1 x VAB-600-D (with cable) (optional)
1 x Keypad cable
1 x GPIO/I2C cable
1 x Front panel cable
1 x Front audio cable
1 x COM cable
1 x AC adapter
1 x DC-in cable
1 x Mini-USB cable
1 x USB cable (for WiFi USB module)
1 x 7" LVDS panel (with cable) (optional)

X-ON Electronics

Largest Supplier of Electrical and Electronic Components

Click to view similar products for [Single Board Computers](#) category:

Click to view products by [VIA manufacturer](#):

Other Similar products are found below :

[MANO882VPGGA-H81](#) [SSD3200W-S-SLC-INN](#) [AmITX-SL-G-Q170](#) [IB100](#) [MVME61006E-2173R](#) [20-101-0738](#) [PCE-4128G2-00A1E](#)
[RSB-4220CS-MCA1E](#) [SHB230DGGA-RC](#) [IB909AF-5650](#) [AmITX-BT-I-E3815](#) [PICO841VGA-E3827](#) [IMB210VGGA](#) [MI981AF](#) [RSB-4221CS-MCA1E](#) [PCE-9228G2I-00A1E](#) [IB915F-3955](#) [IB909F-5010](#) [MI958F-16C](#) [UPS-P-8G-64GB-PACK](#) [S2600WFT](#) [IB915AF-6300](#)
[S2600STB](#) [BBS2600BPS](#) [IB915F-6100](#) [Nit6QP_MAX](#) [MI990VF-X28-E](#) [MI990VF-6820](#) [MI991AF-C236](#) [94AC6636](#) [BANANA PI BPI-M4](#)
[BLKNUC7I3DNHNC1978015](#) [BLKNUC7I5DNK1E 960791](#) [IOT-LS1012A-OXALIS](#) [NITX-300-ET-DVI](#) [94AC6633](#) [A33-OLINUXINO-N8G](#) [A64-OLINUXINO-1GE16GW](#) [A20-SOM-E16GS16M](#) [A20-SOM204-1G-M](#) [EMB-APL1-A10-3350-F1-LV](#) [PICO-APL1-A10-F001](#)
[PICO-APL4-A10-F003](#) [ODYSSEY - STM32MP157C BOARD WITH SOM](#) [BEAGLEBONE GREEN GATEWAY DEV BOARD](#) [ODYSSEY - X86J4105864 8GB RAM 64GB EMMC](#) [ODYSSEY -X86J4105864 8GB/64GB ENTERPRISE](#) [VISIONDK-STM32MP1 V.1.0](#) [VISIONDK-6ULL V.2.0](#) [VISIONDK-8MMINI V.1.0](#)