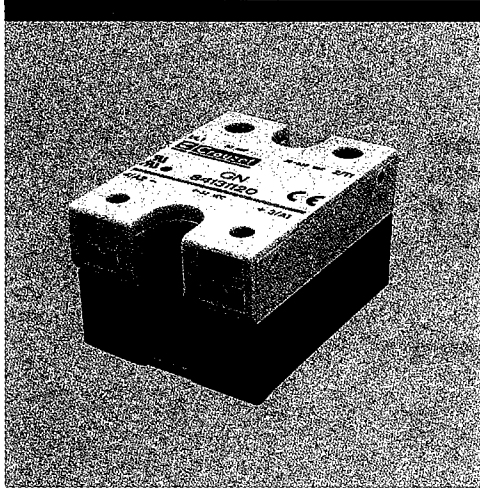


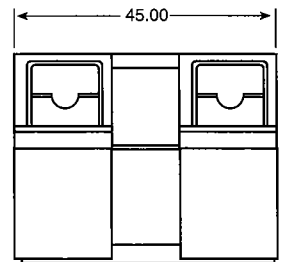
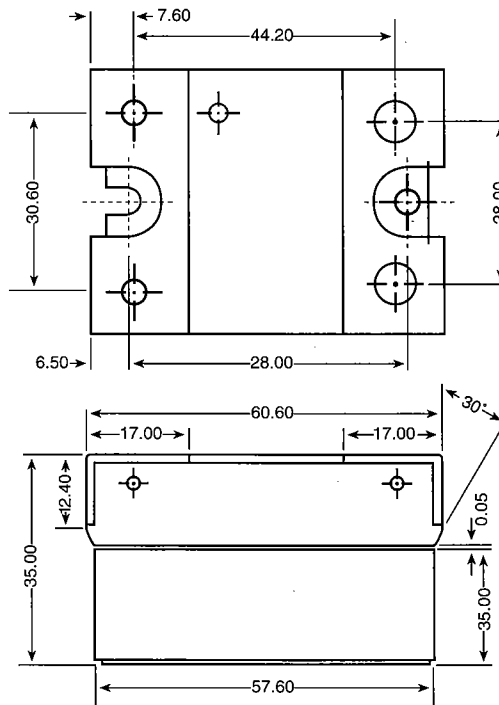
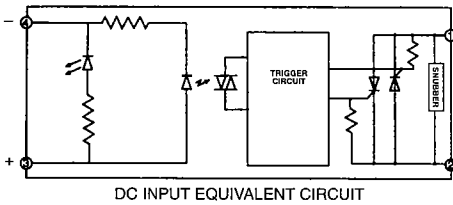
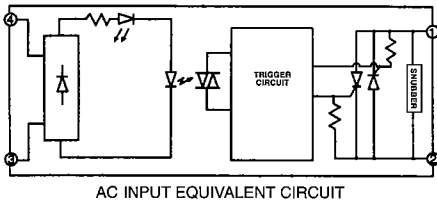
GN SOLID STATE RELAYS



FEATURES:

- CE compliant (EMC and LVD)
- UL and cUL recognized
- Current ratings to 90A
- AC or DC inputs
- Dual back-to-back SCR
- Zero AC or random turn-on models
- Touch Safe
- 4 kV optical isolation
- LED status indicator

DIMENSIONS mm



Products and specifications subject to change without notice.
Consult factory for application assistance.

SOLID STATE RELAYS

1

OUTPUT (SCR) ⁽¹⁾ SPECIFICATIONS	MODEL NUMBER		OUTPUT RATING	CONTROL VOLTAGE
ZERO VOLT TURN-ON	84131001	84131101	10A	90-280 VAC
	84131011	84131111	25A	90-280 VAC
	84131021	84131121	50A	90-280 VAC
	84131031	84131131	75A	90-280 VAC
	84131041	84131141	90A	90-280 VAC
	84131000	84131100	10A	4-32 VDC
	84131010	84131110	25A	4-32 VDC
	84131020	84131120	50A	4-32 VDC
	84131030	84131130	75A	4-32 VDC
	84131040	84131140	90A	4-32 VDC
RANDOM TURN-ON	84131201	84131301	10A	90-280 VAC
	84131211	84131311	25A	90-280 VAC
	84131221	84131321	50A	90-280 VAC
	84131231	84131331	75A	90-280 VAC
	84131241	84131341	90A	90-280 VAC
	84131200	84131300	10A	4-32 VDC
	84131210	84131310	25A	4-32 VDC
	84131220	84131320	50A	4-32 VDC
	84131230	84131330	75A	4-32 VDC
	84131240	84131340	90A	4-32 VDC
Maximum line voltage (Vrms)	280	530		
Minimum line voltage (Vrms)	24	36		
Max. off-state voltage (vpeak) ⁽²⁾	±510	±1100		
Max. off-state leakage (mArms) ⁽³⁾	2.0	4.0		
Static (off-state) dv/dt (V/us) ⁽⁴⁾	500	500		

For higher current models consult factory

INPUT SPECIFICATIONS: (1)

PARAMETER	AC CONTROL	DC CONTROL
Control Voltage	90-280 VAC	4-32 VDC
Drop Out Voltage	10 Vrms	1 VDC
Maximum Input Current (5)	9 mArms	10 mA
Normal Input Resistance	Regulated	Regulated
Turn-On Time	20 mS	8.33 mS (6)
Turn-Off Time	30 mS	8.33 mS

PARAMETER	10	25	50	75	90	UNITS
Maximum On-State Current (7)	10	25	50	75	90	Arms
Minimum On-State Current	100	100	100	100	100	mArms
Maximum 1-Cycle Surge (8)	100	250	500	750	1000	Apeak
Minimum 1-Second Surge (8)	40	75	135	200	280	Apeak
On-State Voltage Drop (9)	1.6	1.6	1.6	1.6	1.6	Vpeak
I ² t (60 Hz, Half Cycle)	200	260	1040	2345	4165	A ² sec
I ² t (280 V Models)	200	260	2345	2345	4165	A ² sec
R _{jb}	1.6	1.6	1.6	1.6	1.6	°C/W

GENERAL SPECIFICATIONS:

PARAMETER	All Devices
Operating Temperature Range	-20 to +80°C
Storage Temperature Range	-40 to +100°C
Input to Output Isolation Voltage (10)	4000 Vrms
Input/Output to Ground Isolation Voltage	2500 Vrms
Capacitance Input to Output (Typical)	8 pF
Line Frequency Range	47 to 63 Hz

Notes:

- (1) Specifications apply to Ta -30 to +80 unless otherwise noted
- (2) One minute maximum duration if applied as a DC voltage.
- (3) At Ta of 25°C and maximum line voltage.
- (4) Minimum dv/dt per EIA/NARM RS443, method RS397, 25°C.
- (5) At maximum input voltage
- (6) At 60 Hz 100 μS for random turn-on models (DC control only).
- (7) With relay properly mounted on an adequate heatsink. See "G" series thermal dissipation curves for proper heatsink size.
- (8) At Ta of 25°C, non-repetitive resistive load.
- (9) At Ta of 25°C and maximum rated current.
- (10) At Ta of 25°C for one second, maximum 1 mA.

Products and specifications subject to change without notice.

Consult factory for application assistance.

X-ON Electronics

Largest Supplier of Electrical and Electronic Components

Click to view similar products for [crouzet](#) manufacturer:

Other Similar products are found below :

[89422008](#) [89422712](#) [89750161](#) [LWRL480A](#) [MAXR2U12D](#) [79215938](#) [79237785](#) [805470A40020MY](#) [80807012](#) [808070Y01125Z](#)
[808550Y00049Z](#) [81502320](#) [81512201](#) [81513075](#) [81513201](#) [81520601](#) [81551001](#) [81716512](#) [81921911](#) [823055C10001MWY](#) [82330582](#)
[823345A10001MB](#) [823345A10002MP](#) [823345A100.5HP](#) [823345P10004MC](#) [823440A100.1MP](#) [82344634](#) [82664024](#) [82861017](#) [82861021](#)
[828627Y00047](#) [831060C1.0](#) [83870104](#) [83990129](#) [84137122](#) [84137181](#) [84211M02LGRS](#) [84217A65CN0S](#) [84717674](#) [84855011](#) [84870200](#)
[84870214](#) [84870404](#) [84872020](#) [87611008](#) [88225030](#) [88270001](#) [88829117](#) [88865135](#) [88865145](#)