



CT Meter

For AC Current Measurement

Easy to Use. Easy to Read.

Programmable dynamic backlight colour

Warning flash

High resolution 5A Input
for use with current transformers

0.5% Accuracy

40 segment curved bar graph display

Combined digital and bar graph display

Programmable scale

USB 2.0
USB port for custom user settings

WIDE viewing angle

Full 4 digit readout for accuracy

Programmable 4 digit star-burst display

Custom messages & annunciators

2 alarm set points

Less than 53mm deep

2 physical digital and analogue outputs

Featuring an acclaimed easy to read display combined with easy to use functionality, and featuring a high resolution input, the CT Meter is the third and newest addition to the Advanced Panel Meter, (APM), product group to measure current.

The APM CT Meter completes the range alongside the Amp Meter and Shunt Meter, enabling all types of accurate current measurement to now be available. When used with an external current transformer, it is possible to accurately measure up to 10,000 amps, whilst providing a range of features including set-points and dynamic backlighting, which have made the APM range the most popular panel meter on the market today.

The programmable scale and custom annunciators features enable users to tailor the meter to display their critical parameters exactly how they want. Dynamic backlighting, in conjunction with set-points, means operators are able to be visually alerted when a parameter is out of range. The two outputs can be used to connect the APM to other systems in the process, meaning the APM CT Meter is much more than just a display.

Key Features

Large multi-format display that incorporates:

- 40 segment bar graph display
- Large 4-digit display
- Separate Starburst display area for annunciators, custom messages and alarm information
- Dynamic backlight colour

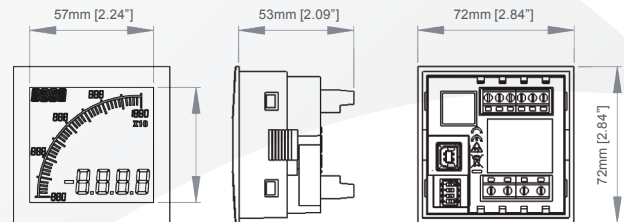
Programmable:

- Display Range (Both Min & Max Values)
- Custom annunciators
- User-selectable backlight color and intensity
- Two independent alarm set-points
- Two independent outputs
- 4-20mA analogue monitor output

Visibility:

- User-adjustable backlight brightness and colour
- Large display
- Wide viewing angle (horizontal and vertical)
- Custom annunciators

Dimensions:



Panel cutout: 68mm x 68mm [2.68" x 2.68"] as per DIN43700/IEC61554

INPUT

Range (CT Output Current)
Range (via External CT)
Accuracy

CURRENT

0 - 5A
0 - 10,000A
0.5%

ENVIRONMENTAL

Temperature - operating
Temperature - storage
IP rating (from the front)
NEMA rating (from the front)

-10 to +60°C
-40 to +70°C
IP65
Type 4 & Type 12

POWER SUPPLY

Nominal Input

12-24 VDC

DISPLAY

Number of digits
Digit height
Number of message characters
Backlight colours
LCD display

4
12mm [0.47"]
4
Red, Green, White
Positive or Negative

OUTPUTS

Max voltage
Max current
Analogue output

24V
500mA
4-20mA

CERTIFICATION

UL, cUL, CE

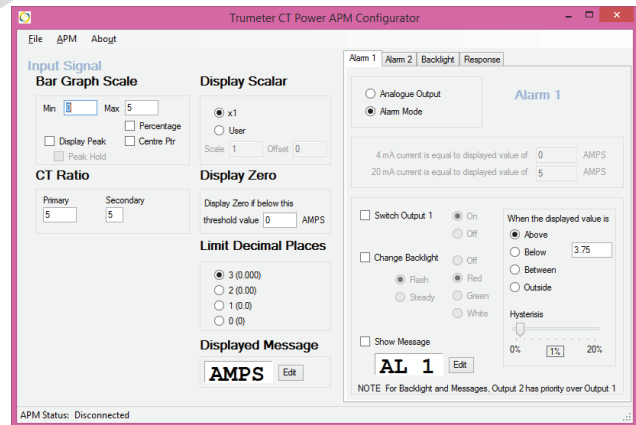


Part Numbers:

APM-CT-APN	APM CT Meter, Positive LCD
APM-CT-APO	APM CT Meter, Positive LCD, With Outputs
APM-CT-ANN	APM CT Meter, Negative LCD
APM-CT-ANO	APM CT Meter, Negative LCD, With Outputs
022128-01	USB Cable

Easy To Use Software

Just plug into any USB port on your PC, run the freely available APM Configurator application and you're off. No drivers required.



Full specifications available online

www.truAPM.com



X-ON Electronics

Largest Supplier of Electrical and Electronic Components

Click to view similar products for [Trumeter](#) manufacturer:

Other Similar products are found below :

[HED261-T](#) [APM-CT-ANO](#) [APM-CT-APN](#) [APM-M2-ANO](#) [RV2-4916B](#) [APM-M2-APO](#) [HED251-T](#) [APM-SHUNT-ANO](#) [APM-VOLT-APO](#)
[APM-CT-APO](#) [RV8-4916](#) [APM-AMP-ANN](#) [RV2-4916](#) [APM-VOLT-ANO](#) [P2-4916](#) [APM-AMP-APO](#) [P8-4916](#) [7016](#) [APM-VOLT-APN](#)
[APM-VOLT-ANN](#) [APM-AMP-APN](#) [KAL-D06](#)