

Trident



Trident Series Connector

With a proven history of engineering and manufacturing excellence spanning over 90 years, ITT has delivered a broad range of innovative product solutions that have and continue to enable our customers to meet their most demanding design requirements. ITT's design centers provide time proven high quality products and exceptional service to customers through a global network of field application engineers, sales force and manufacturing facilities.

The Trident series is a versatile range of electrical connectors with fully interchangeable contacts. With a variety of connector options to service the industrial and transportation markets, Trident is available in low-cost rectangular, rack & panel and circular configurations supporting industrial, shielded and harsh environment requirements. The ever expanding product line now offers customers new flame retardant and high voltage options.

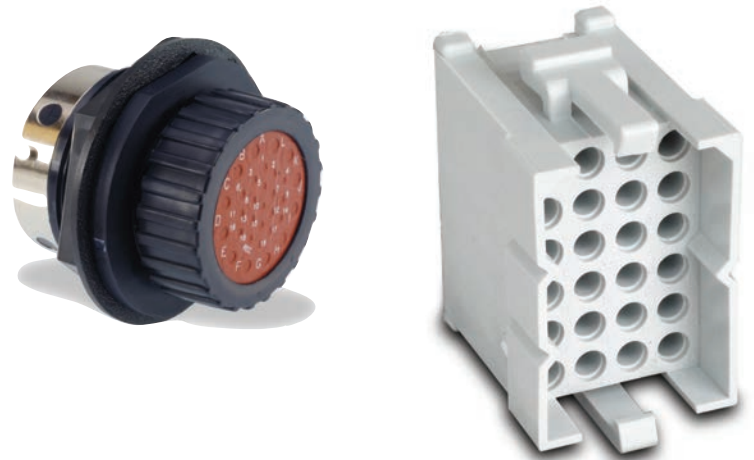
Innovative Interconnect Benefits

- IP 67 environmental resistant
- Interchangeable contacts between all series
- Plastic & metal shells available in sizes 10-24
- Mixed signal and power contact layouts
- Shell to shell polarization
- Low cost of ownership



Product Features

- UL & CSA listed
- Positive bayonet locking
- High voltage connectors are fully VDE certified*
- Standard or reverse plug/receptacles are available
- No insertion tools required and a common extraction tool for all contacts
- Stainless steel three-prong centering clip ensures proper contact alignment



Applications

- Vehicle Cabins
- Offroad & Industrial Vehicles
- Agricultural Machinery
- Lighting
- Construction Vehicles
- Cooling & Heating Systems
- Electric & Hybrid Vehicles
- Robotic Systems



Trident Selection Guide

Max. Voltage	Max. Current	Operating Temp	Durability
2000 VAC ¹	10 - 40 Amps ²	-40 to +125 degrees C	500 mating cycles ³

Trident Product Line Talking Dog



Series	TST - Trident Snap Together
Number of Contacts	02, 03, 04, 06, 12, 24, 36
Type	PA - Plug; Free
	RB - Receptacle; For PCB, with mounting lugs
	RA - Receptacle; panel mounting (delivered without any contacts)
	RR - Receptacle; For PCB, 90° right angle mounting (only for 12 position connectors with machined contacts)
	AS - Accessory; receptacle shroud
	AH - Accessory; plug strain hood relief hood
Color Moulding	0 = Black
Contact Type	0 = No contacts (standard for plug and panel mounted receptacle)
	1 = Machined solder tail pin
	2 = Machined solder tail socket
	5 = Formed stamped solder tail pin
	6 = Formed stamped solder tail socket
Plating Styles	T = Tin
	Y = Gold
	Z = Gold flash
	* = None (no contacts)

¹ Depends on contacts used, layout and degree of debris or liquid. ² Depends on number and type of contacts used. ³ Depends on plating and type of contacts used. * For High Voltage products, incorrect wiring or assembly of connectors or misuse may result in electric shock, burn or local overheating. To avoid damage to any component parts or property, physical damage, or physical injury, connectors must not be disconnected under load.

Visit us online at www.itccannon.com, or these social media networks



ITT Corporation

Americas:
George Blazas
860.845.8294
george.blazas@ittcorp.com

Europe:
Jörg Maier
49.7151.699.177
joerg.maier@ittcorp.com

Asia:
Robin He
86.755.27267036
robin.he@ittcorp.com

Japan:
Atsushi Matsuo
81.46.257.2010
atsushi.matsuo@ittcorp.com

X-ON Electronics

Largest Supplier of Electrical and Electronic Components

Click to view similar products for [itt manufacturer](#):

Other Similar products are found below :

[BKAF3-68102-25](#) [MDM-9SL1B](#) [NEM-QTHSSB-68PGNS-B](#) [MJSR-34PL61](#) [096520-0863](#) [096520-0927](#) [153205-3053](#) [096522-0534](#)
[097391-0281](#) [MDM-37PCBR-F222](#) [CA3108E14S-5PBA176A232](#) [MJSR-42PH003](#) [MDM-51PCBRP-L56](#) [CV3456L28-15P](#) [KPSE06F20-](#)
[41SA206F0](#) [CB2-18-3SCA232](#) [MS3106E22-14P](#) [252-7689-001](#) [097414-0074](#) [130680-0000](#) [CT6E18-11SCA206](#) [CA3101E10SL-4SF80DN](#)
[MS3100F14S-7S](#) [CA3101E10SL-4PBA176F42](#) [053513-4377](#) [051212-0001](#) [MS3101E181SW](#) [980-8001-545](#) [CAR3102A20-27SX](#) [024251-](#)
[0016-R](#) [024253-0025](#) [024265-0001](#) [024270-0015](#) [024271-0022](#) [024273-0043](#) [024288-0001](#) [M24308/24-21F](#) [CT1F22-7SS](#) [CT2-20-23SWS](#)
[CT2-20-23SXS](#) [CT2-36-10PCAU](#) [CT6-24-11PSA206](#) [CT6F36-10PCA152](#) [CT6F9767-14-4-14S-5PC](#) [CT6T9767-14-4-14SA7SS](#)
[D38999/20FG16PA-LC](#) - [D38999/26JH21PB-LC](#) [MD1-21PS](#) [MDM-15PH001B-A174](#) [MDM-15PH003B-A174](#)