

# Measuring Wheels

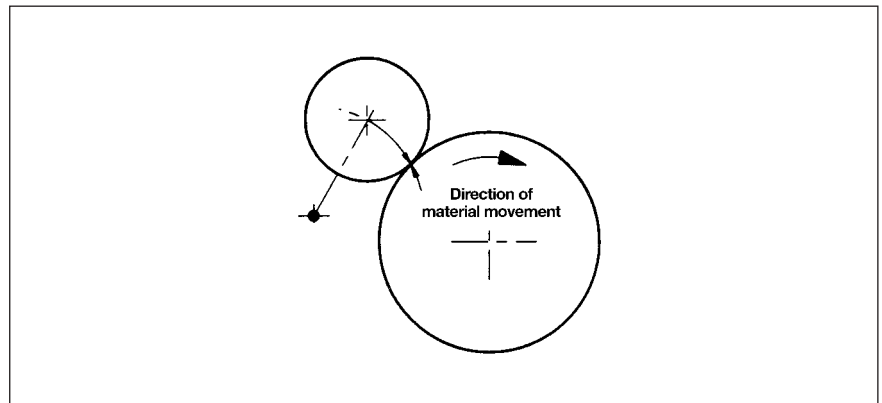
## APPLICATION

In order to avoid errors when using measuring wheel actuation, it is important that the slip is kept as low as possible. When choosing a profile (surface structure), special attention must be given to the properties the material being measured, such as elasticity, thickness and interaction resistance. Slippage is also influenced by the width of the contacting measuring wheel, the pressure of

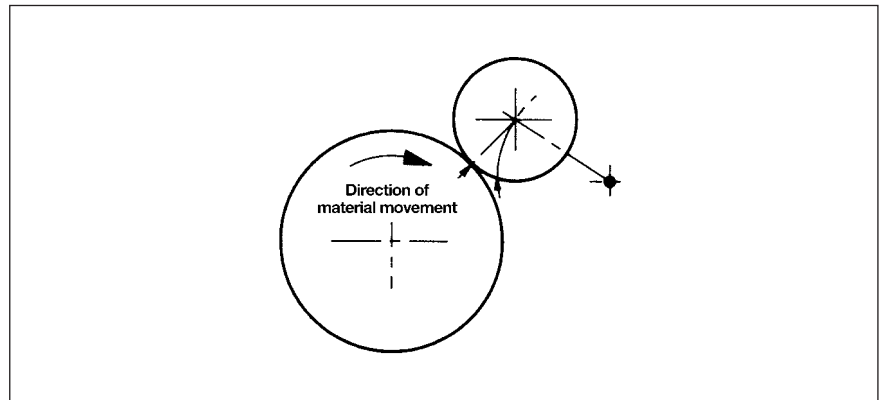
contact, the tensile stress in the material that is being measured and the angle of wrap. The angle of wrap should be as large as possible. Wheel bodies are made of cast metal or plastics (see designation).

The position of the measuring wheel should be chosen such that the material moves away from the bearing of the sensor.

## CORRECT MEASURING WHEEL OR PULSE GENERATOR



## WRONG MEASURING WHEEL OR PULSE GENERATOR



## MEASURING WHEEL CIRCUMFERENCE/ TRANSMISSION RATIO

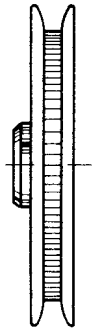
Use the following measuring wheels for different transmission ratios of counters:

Counter transmission ratio	measuring wheel circumference
500:1	0.2 m (1/5 yd.)
50:1	0.2 m (1/5 yd.)
5:1	0.2 m (1/5 yd.)
2:1	0.5 m (1/2 yd.)
1:2	0.2 m (1/5 yd.)
1:5	0.5 m (1/2 yd.)
1:20	0.2 m (1/5 yd.)

# Measuring Wheels

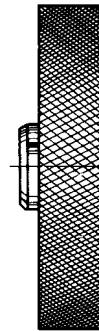
## OVERVIEW

Profile 1



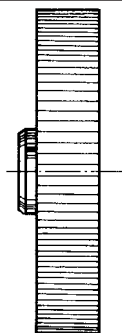
**1** with rims, aluminium with fine cross knurling  
Used e.g. for threads and yarns

Profile 2



**2** Rubber profile, glued on  
Used e.g. for paper and cardboard, cable measurement, non-greasy metal, fleece, wood (rough or finished), soft and hard plastic materials;  
A = soft, highly adhesive rubber coating  
B = good-grip, low-wear rubber

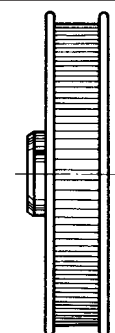
Profile 3/4



**3** Rubber coating with parallel knurling, vulcanized  
Used e.g. for rubber, leather, textiles, floorings, glass

**4** Aluminium with parallel knurling  
Used e.g. for rubber, soft plastic materials, wood with rough surface, certain textiles

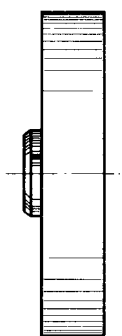
Profile 5



**5** With rims, aluminium with parallel knurling  
Used e.g. for threads, yarns, ribbons

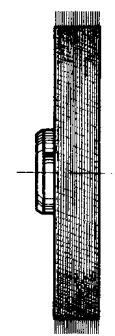
## MEASURING WHEEL circumference/transmission ratio

Profile 6



**6** Plastic coated  
Used e.g. for wire, greased metals, steel profiles

Profile 7



**7** Card band  
Used e.g. for carpets and coarse textiles

# Measuring Wheels

## ORDER INFORMATION Aluminium

## PLASTIC

## Technical data

Circumf.	Profile	Width of contact surf. mm	Bore $\varnothing$			
			4.0 mm	6.0 mm	7.0 mm	10.0 mm
0.2 m	1	4	0 601 014	0 601 015	0 601 017	--
	2 A	12	0 601 018	--	--	--
	2 B	12	0 601 118	0 601 048	--	0 601 049
	2 A	24	0 601 020	--	0 601 092	--
	2 B	24	--	--	0 601 192	--
	4	20,5	0 601 023	--	--	--
	4	20	--	--	0 601 093	--
	5	16,5	0 601 026	--	0 601 094	--
0.5 m	2 A	25	--	--	0 601 050	--
	2 B	--	--	--	0 601 150	0 601 151
	3	25	--	--	0 601 059	0 601 156
	4	25	--	--	0 601 121*	0 601 157
	5	16	--	--	0 601 052	--
	6	25	--	--	0 601 063*	0 601 163
	7	26,5	--	--	0 601 054	--
1/5 yd.	1	4	0 601 034	--	0 601 037	--
	5	16,5	--	--	0 601 096	--
1 Fuß	2 A	25	--	--	0 601 071	--
	2 B	25	--	--	0 601 171	--
0.2 m	1	4	0 601 100	--	--	--
0.5 m	4	25	--	--	0 601 301	--
	6	25	--	--	0 601 300	--

\* meets PTB requirements

Inquire for other measuring wheels

## **X-ON Electronics**

Largest Supplier of Electrical and Electronic Components

*Click to view similar products for [hengstler](#) manufacturer:*

Other Similar products are found below :

[0.601.151](#) [0.635.810](#) [0.633.831](#) [0.868.165](#) [0.891.606](#)