

REVISION AJ

DIMENSIONS ARE IN INCHES		UNLESS OTHERWISE NOTED		TOLERANCES ARE:		TITLE:	DWG NO:
ONE PLC DECIMALS ± .1 [2.54]	THREE PLC DECIMALS ± .005 [.127]	ANGLES	± 2°		2mm THROUGH HOLE BOX CONNECTOR STRIP ASSEMBLY	MMS-1XX-01-XXX-XX-XXX	SHEET 1 OF 2
TWO PLC DECIMALS ± .01 [.254]	FOUR PLC DECIMALS ± .0020 [.0508]						

MMS-1XX-01-XXX-XX-XXX

NO. OF POSITIONS PER ROW
-02 THRU -40 FOR DOUBLE ROW

LEAD STYLE
-01 = THROUGH HOLE (SEE TABLE 1)

PLATING
-L = LIGHT SELECTIVE
-S = SELECTIVE
-T = TIN
-F = FLASH SELECTIVE
-H = HEAVY GOLD (ENTRY STYLE: -SV, -DV AND -DH ONLY)
-LM = LIGHT SELECTIVE; MATTE TIN TAIL
-SM = SELECTIVE; MATTE TIN TAIL
-TM = TIN; MATTE TIN TAIL
-FM = FLASH SELECTIVE; MATTE TIN TAIL
-LTL = LIGHT SELECTIVE TIN/LEAD

POLARIZING OPTION
SPECIFY POSITION TO BE POLARIZED (USE PK-07-N)

ENTRY/ROW SPECIFICATION
-SH = SINGLE ROW, HORIZONTAL ENTRY (USE MMS-XX-S -SEE NOTE 7)
-DH = DOUBLE ROW, HORIZONTAL ENTRY (USE MMS-XX-D -SEE NOTE 7)
-XD = DUAL ENTRY
-XP = PASS THROUGH ENTRY
XV = VERTICAL (TOP) ENTRY

□ = ENTRY OPTION AVAILABLE AS NON-CATALOGED STANDARD

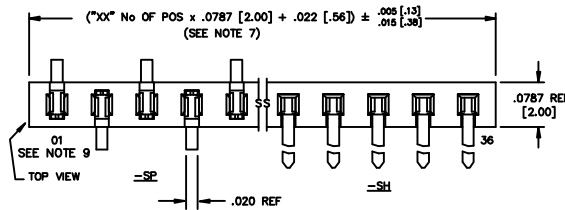


FIG 1

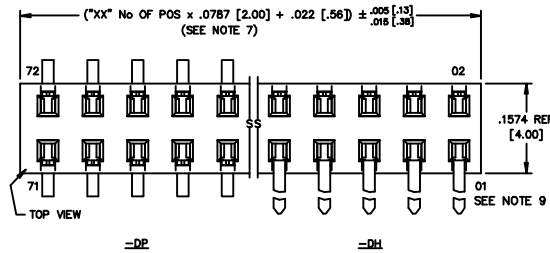
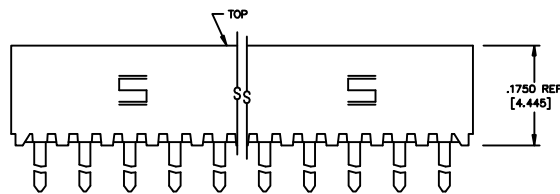


FIG 2



LEAD/ENTRY CONTACT 1

TABLE 1

		CONTACT 2	PACKAGING TUBE	PLUG	
□	01-SD	C-63-01-XXX	PT-1-24-02-23	TP-24	
□	01-DD	C-63-01-XXX	PT-1-24-01-25	TP-03	
□	01-SP	C-63-10-XXX	PT-1-24-03-16	TP-03	
□	01-DP	C-63-10-XXX	PT-1-24-01-27	TP-03	
	01-SH	C-63-05-XXX	PT-1-24-01-37	TP-24	
	01-DH	C-63-03-XXX	C-63-04-XXX	PT-1-24-03-09	TP-09
	01-L-SV	C-63-29-XXX	PT-1-24-01-23	TP-12	
	01-L-DV	C-63-29-XXX	PT-1-24-19-09	TP-09	
	01-S-SV	C-63-29-XXX	PT-1-24-01-23	TP-12	
	01-S-DV	C-63-29-XXX	PT-1-24-19-09	TP-09	
	01-T-SV	C-63-29-XXX	PT-1-24-01-23	TP-12	
	01-T-DV	C-63-29-XXX	PT-1-24-19-09	TP-09	
	01-F-SV	C-63-29-XXX	PT-1-24-01-23	TP-12	
	01-F-DV	C-63-29-XXX	PT-1-24-19-09	TP-09	
	01-H-SV	C-63-29-XXX	PT-1-24-01-23	TP-12	
	01-H-DV	C-63-29-XXX	PT-1-24-19-09	TP-09	

- NOTES:
- CONTACT RETENTION FORCE: SINGLE ROW .5 LB MIN. CONTACT RETENTION FORCE: DOUBLE ROW 1 LB MIN.
 - MAX ALLOWABLE BOW: .003 INCH/INCH.
 - MAX ALLOWABLE SWAY: 2' IN EITHER DIRECTION.
 - 1st POS. WILL ALWAYS POINT UP ON TOP VIEW AS SHOWN.
 - [] DIMS ARE IN METRIC AND ARE NOT CONTROLLING DIMS.
 - (Ⓢ) REPRESENTS A CRITICAL DIMENSION.
 - CUT BODIES FROM MMS-40-D AND MMS-40-S.
 - POSITIONS -02 THRU -04 ARE TO BE BULK PACKAGED.
 - # 1 PIN LOCATION IS THE SAME FOR ALL LEAD STYLES WITHIN A ROW OPTION. SH, -SP, -SD, -SV SEE FIG 1. DH, -DP, -DD, -DV, SEE FIG 2
 - MAXIMUM PIN HEIGHT VARIATION BETWEEN TWO PINS IN THE SAME ROW IS +/- .005.

PROPRIETARY NOTE
THIS DOCUMENT CONTAINS INFORMATION CONFIDENTIAL AND PROPRIETARY TO SAMTEC INC. AND SHALL NOT BE REPRODUCED OR TRANSMITTED TO OTHER DOCUMENTS OR DISCLOSED TO OTHERS OR USED FOR ANY PURPOSE OTHER THAN THAT FOR WHICH IT WAS OBTAINED WITHOUT THE EXPRESSED WRITTEN CONSENT OF SAMTEC INC.

PLOT SCALE: 1=15 / DIMSCALE: .1

EXISPROD\ASSEMBLY\2MM MMS01ASM

samtec

520 PARK EAST BLVD, NEW ALBANY, INDIANA 47150
PHONE (812) 944-6733 P.O. BOX 1147
CODE 55322

MADE BY: PURVIS 2-12-93

MMS-1XX-01-XXX-XX-XXX
SHEET 1 OF 2

X-ON Electronics

Largest Supplier of Electrical and Electronic Components

Click to view similar products for [FFC & FPC Connectors](#) category:

Click to view products by [Samtec](#) manufacturer:

Other Similar products are found below :

[HFW11R-1STE1H1LF](#) [FH29B-100S-0.2SHW\(99\)](#) [FA5S008HP1](#) [FH29B-120S-0.2SHW\(99\)](#) [FH29B-80S-0.2SHW\(99\)](#) [FHS-16](#) [FPH-2022G](#)
[52610-1075](#) [52610-1275](#) [52610-1934](#) [XF3M\(1\)-1415-1B-R100](#) [501864-3091-TR225](#) [0525594033](#) [086210010340800](#) [086222026001800](#)
[52271-2869-CUT-TAPE](#) [62674-201121DLF](#) [62684-36210E9ALF](#) [52610-1675](#) [52746-1671-TR250](#) [10051922-2810EHLF](#) [6-520415-9](#)
[BD021-09A-A1-0350-0200-0550-LD](#) [SFV6R-1STE9HLF](#) [XF3M-2915-1B-R100](#) [1658549-1](#) [62674-221121ALF](#) [46214008010800](#)
[046298003000883](#) [151660622](#) [842-816-2630-035](#) [AYF530665TA](#) [AYF351525](#) [046296011930846+](#) [AYF352325A](#) [046254020000800+](#)
[FH19C-13S-0.5SH\(99\)](#) [FH39J-51S-0.3SHW\(99\)](#) [AYF355125A](#) [AYF530365TA](#) [FH29B-44S-0.2SHW\(99\)](#) [SFW5R-2STAE9LF](#) [AYF351125A](#)
[AYF350725A](#) [62684-502100AHLF](#) [FH39-61S-0.3SHW\(99\)](#) [AYF414035A](#) [10064555-172520HLF](#) [AYF212335A](#) [504754-2500](#)