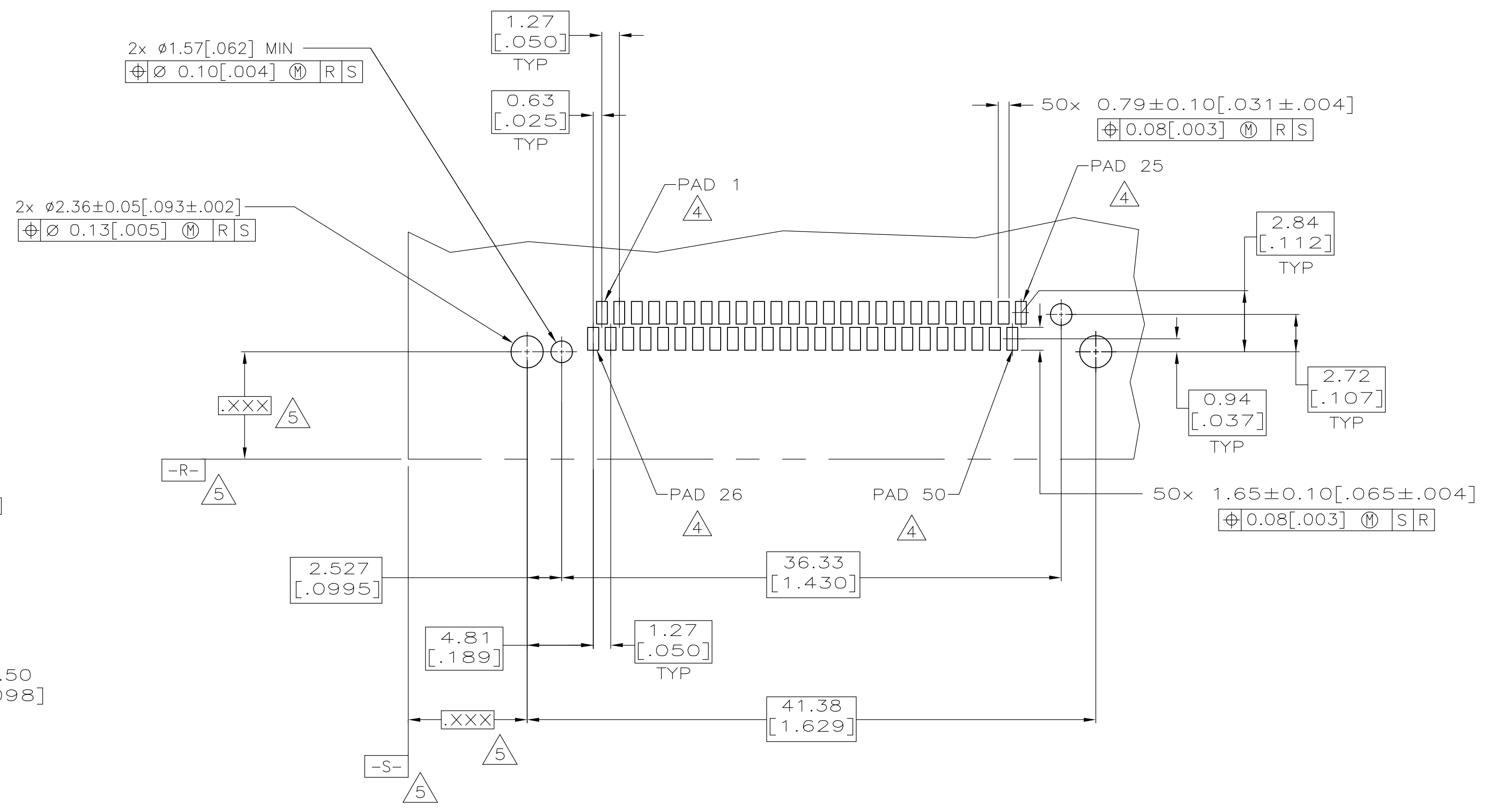


- 1 HOUSING: POLYESTER LIQUID CRYSTAL, BLACK
CONTACTS: BRASS.
- 2 CONTACTS: $0.76 \mu\text{m}$ [0.00030] MIN GOLD FOR A LENGTH OF 3.50 [0.138] MIN FROM MATING END, $3.81 \mu\text{m}$ [0.00150] MIN TIN ON SOLDER TAILS, ALL OVER $1.27 \mu\text{m}$ [0.00050] MIN NICKEL.
- 3 POSITION TOLERANCE APPLIES AT CONTACT TIP.
- 4 POSITION NUMBERS SHOWN FOR REFERENCE ONLY.
- 5 DATUMS AND BASIC DIMENSIONS ESTABLISHED BY CUSTOMER.
- 6. CUSTOMER TO PROVIDE CARD GUIDANCE SYSTEM.
- 7. CONNECTOR REQUIRES USE OF 2 - SIZE 2M SCREWS FOR FASTENING TO PRINTED CIRCUIT BOARD.



1, 13, 38, 50	ALL OTHER PINS	25, 26	5788667-1
5.00 [0.197]	4.25 [0.167]	3.50 [0.138]	PART NUMBER
"L" (PIN LENGTH) AND LOCATION			

THIS DRAWING IS A CONTROLLED DOCUMENT.

DIMENSIONS: mm [INCHES]	TOLERANCES UNLESS OTHERWISE SPECIFIED:	0 PLC ± -	1 PLC ± -	2 PLC ± 0.13[005]	3 PLC ± -	4 PLC ± -	ANGLES ± -
MATERIAL 1		FINISH 2		SIZE A1		CAGE CODE 00779	
CUSTOMER DRAWING		SCALE 4:1		SHEET 1 OF 1		REV 0	

DWG: G.PETES
 CHK: D.GORENC
 APD: M.WALMSLEY
 NAME: Tyco Electronics Corporation
 ADDRESS: Harrisburg, PA 17105-3608
 PRODUCT SPEC: PIN HEADER ASSEMBLY, 50 POSN, SMT, TOP MOUNT.
 APPLICATION SPEC: -
 DRAWING NO: 5788667
 DATE: 25NOV05

X-ON Electronics

Largest Supplier of Electrical and Electronic Components

Click to view similar products for [Memory Cards](#) category:

Click to view products by [TE Connectivity](#) manufacturer:

Other Similar products are found below :

[SQF-ISDS1-8G-21C](#) [SQF-S10M2-256G-S9E](#) [SQF-P10M1-4G-P9C](#) [CAE1B256GTFDWB00EAA0](#) [1061701](#) [CAE1B064GTFDWB00EAA0](#)
[CAE1B128GTFDWB00EAA0](#) [LMEX1L128GG2](#) [LMEX1L256GG2](#) [LNEX1L016GG4](#) [LNEX1L032GG4](#) [LNEX1L064GG4](#)
[LMEX1L016GG2](#) [LMEX1L032GG2](#) [LMEX1L064GG2](#) [SDUU1-008PDG](#) [SDUU1-0643SG](#) [SDUU1-1283SG](#) [SDC2GCPGRB](#)
[SDC2GGSGRB](#) [SDSDUN4-064G-GN6IN](#) [SDSDUN4-128G-GN6IN](#) [SDSDUN4-256G-GN6IN](#) [SDSQUA4-032G-GN6IA](#) [SDSQUA4-032G-](#)
[GN6MA](#) [SDSQUA4-064G-GN6IA](#) [SDSQUA4-064G-GN6MA](#) [SDSQUA4-128G-GN6IA](#) [SDSQUA4-128G-GN6MA](#) [SDSQUA4-256G-](#)
[GN6MA](#) [SDSQUA4-400G-GN6MA](#) [SDSQUNR-032G-GN3MN](#) [SDSQUNR-064G-GN3MN](#) [SDSQXAO-256G-GNCZN](#) [SDU4GCMGRB](#)
[SDUC6-002PCG](#) [SDSDAF4-256G-I](#) [SDSDAF4-512G-I](#) [SDSDQAF4-032G-I](#) [AP-CF016GKBNS-ETNRG](#) [AP-CF002GKBNS-ETNRG](#)
[SDSDAF4-064G-I](#) [MMM-3029-KNS](#) [HMC-EF283](#) [SDCFHS-016G-G46](#) [SDCFXPS-032G-X46](#) [SDSDB-016G-B35](#) [SDSDQAF3-032G-I](#)
[SDSDQAF3-064G-I](#) [SDSDQB-032G-B35](#)