



FIBOX
Enclosing innovations



**New Fibox Tempo
saves time and money**

FIBOX TEMPO

Tempo makes the change easy

Tempo product family is fully compatible with common PVC boxes so changing your old box to high-quality Fibox Tempo is very easy. Tempo is designed to save your assembly costs. Make a change, switch to Tempo.



Rapid hinges can be installed in seconds - saving time and costs. Hinges can be used in every side, left or right, up or down. No tools or holes needed for the installation.

- Dimensions and mounting pods compatible with common enclosures in the market
- Easy installation thanks to low base
- Several wall mounting options
- Plain cover for printing, stickers and switches
- Variety of accessories
- Every Tempo enclosure includes rapid hinges
- Hinges allow using all cover screws, maintaining good IP rating
- Wire sealing or sealing plugs for added security



- IP 65, IK 07
- Glow wire test 650
- No halogens
- RoHS compliant

ENCLOSURES

- Large plain cover for printing and stickers
- Grey, RAL 7035
- Grey or transparent cover
- Hinges included
- IP 65, IK 07
- Cover screws and mounting plate screws included

Enclosure	Internal dimensions			External dimensions	ABS, Grey cover	ABS, Transparent cover
	Base	Cover			TA191209	TA191209T
177 x 112 x 82	58	24		187 x 122 x 90	TA191209	TA191209T
191 x 153 x 91	67	24		201 x 163 x 98	TA201610	TA201610T
228 x 178 x 100	76	24		240 x 191 x 107	TA241911	TA241911T
278 x 226 x 100	76	24		289 x 239 x 107	TA292411	TA292411T
331 x 278 x 110	86	24		344 x 289 x 117	TA342912	TA342912T



FP 10674



KN 3.9 x 9.5-10 SET



TH T

TECHNICAL INFORMATION

PROPERTY	ABS
Ingress Protection (EN 60529)	IP 65
Impact Resistance (EN 62262)	IK 07
Temperature Range Celsius (short term)	-40° . . 80°C
Fahrenheit	-40° . . 175°F
Temperature Range Celsius (continuous)	-40° . . 60°C
Fahrenheit	-40° . . 140°F
Electrical Insulation	Totally insulated
Light Grey Parts Colour	RAL 7035; Industry Grey
Transparent Clear PC Cover	Transparent
Cover Screws	Grey
Cover Screws	Polyamide (PA)
Gasket	PUR
Flammability rating	UL 94 HB
Glow Wire Test (IEC 695-2-1)	650°C
Non-toxicity	Halogen Free
Chemical Resistance *	Good

CONFORMITY TO STANDARDS

Empty enclosures for low-voltage switchgear and Control Gear Assemblies EN 62208:2003 (50298:1998)

Data subject to change without notice.

*Consult separate raw material data for more detailed information

ACCESSORIES

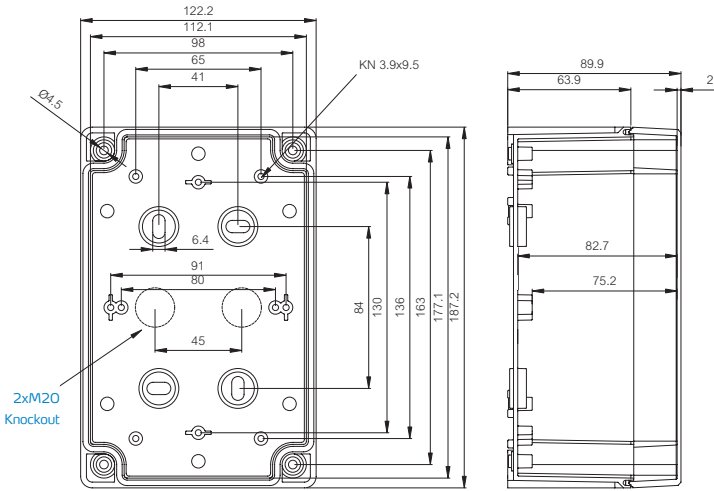
Mounting plates & DIN-rails

Base size	Mounting plate	DIN-rail 35 short	DIN-rail 35 long
1912	MP 1912	MIV 10	DH-3
2016	MP 2016	DH-3	ARH 2320
2419	MP 2419	EKV 12	DR 210
2924	MP 2924	DR 215	DR 265
3429	MP 3429	ARH 2328	DR 316

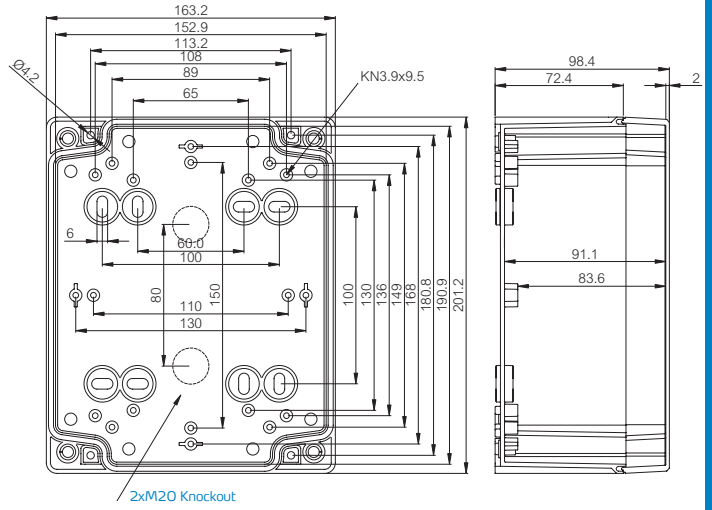
FP 10674	Wall fastening lug • 2 pcs incl. screws
FEP 26150	Wall fastening cover plug
TS H15 SET	Spacer set • for mounting plate M4/15mm, 4 pcs
TS H30 SET	Spacer set • for mounting plate M4/30mm, 4 pcs
MBS HH	Grey cover screw set • size 1912 only
MBS 18020	Grey cover screw set
MBS 14552	Grey wing head set • for cover screw
DPS 14553	Grey sealing plug set • for cover screw
TH T	Hinge set
KN 3.9x9.5-10 SET	Mounting screw set • 10 pcs
MB 12189	Draining plug
MB 10631	Ventilation device IP 33

DRAWINGS

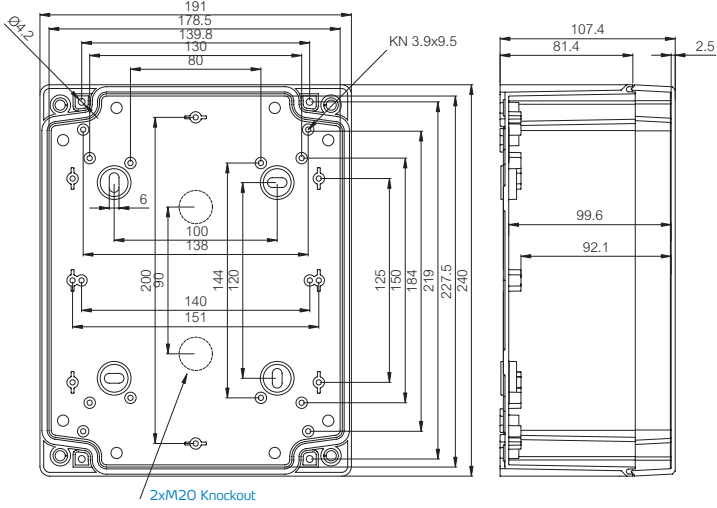
1912



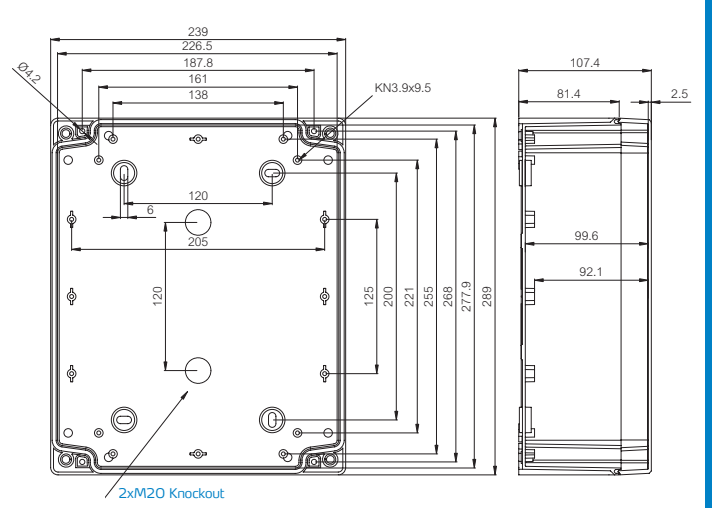
2016



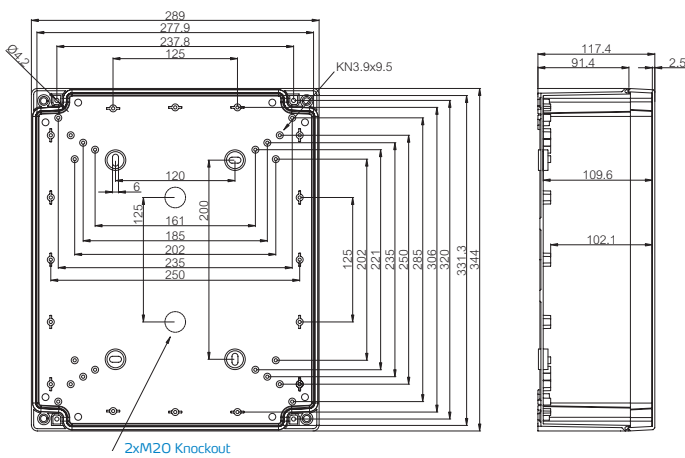
2419



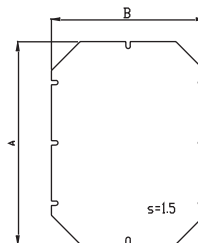
2924



3429



MOUNTING PLATES



Order symbol	Size A x B
MP 1912	165 x 105
MP 2016	170 x 140
MP 2419	216 x 167
MP 2924	265 x 215
MP 3429	320 x 265

In addition to these dimensional drawings 2D CAD/CAM -files, 3D-CAD files and PDF product datasheets can be downloaded from www.fibox.com

Fibox Enclosures

Fibox Oy Ab, PO Box 16
FI-02421 Jorvas, Finland
Tel. +358 (0)207 785 700
Fax +358 (0)207 785 702
info@fibox.fi

Fibox, a privately owned Finnish company, is one of the largest enclosure manufacturers in the world, and is the market leader in thermo-plastic enclosures used for protecting electrical and electronic components operating in hostile environments. FIBOX enclosures are manufactured in modern factories located in Finland, Germany, China and Republic of Korea.

www.fibox.com

ABOUT FIBOX

OVER 1000 CHOICES TO FACE THE MOST DEMANDING ENVIRONMENTS

The Fibox range of standard enclosures provides the designer with over 1000 choices for packaging electrical and electronics equipment operating in hostile environments. Fibox enclosures comply with EN 60529 (IEC 529) and UL50/508. Most of our enclosures have achieved ingress ratings of IP 66/IP 67 and NEMA 4X and 6, 6P. Enclosure performance is verified by independent laboratory testing and on-going monitoring of production. With over 700 standard accessories, Fibox enclosures are easy to use and flexible. Standard solutions exist for panel mounting, hinging inner doors, wire and cable management and air ventilation.

CUSTOMISED ENCLOSURES

To increase the range and flexibility of our packaging solutions, Fibox has developed a comprehensive range of services, permitting cost effective customisation for specific applications. The two most important of these are machining services and customised tooling. Our advanced CNC machinery can supply enclosures with holes, cutouts and openings to your specification.

Painting and screen printing is also available. For large OEM volumes, our sophisticated, multiple slide tooling permits cost effective modification of any side of the enclosure. CAD drawings of standard enclosures are available at www.fibox.com to aid the engineer in creating the most cost-effective customisation.

X-ON Electronics

Largest Supplier of Electrical and Electronic Components

Click to view similar products for [Fibox](#) manufacturer:

Other Similar products are found below :

[PC 100/100 HG ENCLOSURE](#) [PCT 162509](#) [ABS F 65 G](#) [CAB P 302017](#) [CAB PC 303018 G3B](#) [ABQ3 153410](#) [CAB PCQ 404017 G](#) [PC 2819 13 T-2FSH](#) [PC 5628 13 T](#) [TAM 090706 MC](#) [TAM201610](#) [ARCA 203015](#) [ARCA 604021](#) [EKPVT 2539547](#) [PC 100/75 HT](#) [PCM 125/100 G](#) [CAB PC 403018 G](#) [PC 125/125 HG](#) [7094450](#) [PC 200/150 HT](#) [PCM 175/100 T](#) [PCT 121210](#) [9821007](#) [EKPE 130 T ENCLOSURE](#) [ABS C 85 G](#) [FEX 3828 18 T ENCLOSURE](#) [7811250](#) [CAB PC 302018 T CABINET](#) [CAB PC 303018 T CABINET](#) [CAB PCQ 403023 T](#) [CAB PCQ 603017G](#) [CAB PC 604022 T3B CABINET](#) [PC 30/25-3 ENCLOSURE](#) [AR14127CHSS](#) [EKTH 130 T](#) [EKUH 180 G](#) [EKUH 180 T](#) [AR1086CHLT](#) [AR181610CHSC](#) [FP 36/31](#) [MP 1912](#) [PC 071004](#) [PC 175/150 HG](#) [PC 3819 18 T-2FSH](#) [PC 5628 13 T-3FSH](#) [8120843](#) [8120844](#) [8120845](#) [8120846](#)