

# C 091 B

## Female receptacle, bayonet locking



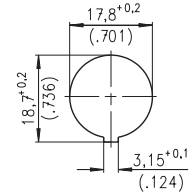
Ring nut



Bayonet outside



Bayonet inside



Panel cutout

Description	Drawing	No. of cont.	Part Number solder termination		Part Number Crimp termination <sup>1)</sup>
			Contact plating silver	Contact plating gold <sup>2)</sup>	
Female receptacle, bayonet locking, outside, shell: full plastic, front mounting, termination: solder or crimp, panel mounting with ring nut <sup>3)</sup> , contact plating: silver or gold. solder area: tin plated		3 DIN	T 3277 000	T 3277 018 <sup>4)</sup>	T 3277 050
		4 IEC	T 3327 000	T 3327 018 <sup>4)</sup>	T 3327 050
		5	T 3377 000	T 3377 018 <sup>4)</sup>	T 3377 050
		5 S DIN	—	—	—
		6 DIN	T 3427 000	T 3427 018 <sup>4)</sup>	T 3427 050
		7	T 3437 000	T 3437 018 <sup>4)</sup>	T 3437 050
		7 DIN	—	—	—
		8 DIN	—	—	—
		12	—	—	—
		14	—	—	—
		Female receptacle, bayonet locking, outside, shell: full plastic, front mounting, termination: solder or crimp, snap-in-mounting, contact plating: silver or gold. solder area: tin plated		3 DIN	T 3277 500
4 IEC	T 3327 500			T 3327 518 <sup>4)</sup>	T 3327 550
5	T 3377 500			T 3377 518 <sup>4)</sup>	T 3377 550
5 S DIN	T 3397 500 <sup>4)</sup>			T 3397 518 <sup>4)</sup>	T 3397 550 <sup>4)</sup>
6 DIN	T 3427 500			T 3427 518 <sup>4)</sup>	T 3427 550
7	T 3437 500			T 3437 518 <sup>4)</sup>	T 3437 550
7 DIN	T 3447 500 <sup>4)</sup>			T 3447 518 <sup>4)</sup>	T 3447 550 <sup>4)</sup>
8 DIN	T 3527 500			T 3527 518 <sup>4)</sup>	—
12	T 3627 500			T 3627 518 <sup>4)</sup>	—
14	T 3647 500			T 3647 518 <sup>4)</sup>	—
Female receptacle, bayonet locking, inside, shell: full plastic, front mounting, termination: solder or crimp, snap-in-mounting, contact plating: silver or gold. solder area: tin plated				3 DIN	T 3271 500
		4 IEC	T 3321 500	T 3321 518 <sup>4)</sup>	T 3321 550
		5	T 3371 500	T 3371 518 <sup>4)</sup>	T 3371 550
		5 S DIN	T 3391 500 <sup>4)</sup>	T 3391 518 <sup>4)</sup>	T 3391 550 <sup>4)</sup>
		6 DIN	T 3421 500	T 3421 518 <sup>4)</sup>	T 3421 550
		7	T 3431 500	T 3431 518 <sup>4)</sup>	T 3431 550
		7 DIN	T 3441 500 <sup>4)</sup>	T 3441 518 <sup>4)</sup>	T 3441 550 <sup>4)</sup>
		8 DIN	T 3521 500	T 3521 518 <sup>4)</sup>	T 3521 550 <sup>4)</sup>
		12	T 3621 500	T 3621 518 <sup>4)</sup>	—
		14	T 3641 500	T 3641 518 <sup>4)</sup>	—
		Female receptacle, bayonet locking, outside, shell: metal, rear mounting, termination: solder or crimp, panel mounting with ring nut <sup>3)</sup> , contact plating: silver. solder area: tin plated		3 DIN	T 3277 100
4 IEC	T 3327 100			—	T 3327 150 <sup>4)</sup>
5	T 3377 100			—	T 3377 150 <sup>4)</sup>
5 S DIN	T 3397 100			—	T 3397 150
6 DIN	T 3427 100			—	T 3427 150 <sup>4)</sup>
7	T 3437 100 <sup>4)</sup>			—	T 3437 150 <sup>4)</sup>
7 DIN	T 3447 100			—	T 3447 150
8 DIN	T 3527 100			—	T 3527 150
12	T 3627 100 <sup>4)</sup>			—	—
14	T 3647 100 <sup>4)</sup>			—	—

<sup>1)</sup> Please order crimp contacts separately, see page 46 <sup>2)</sup> see remark page 23 <sup>3)</sup> Panel mounting with hex nut upon request

<sup>4)</sup> Available upon request. Min. order qty.100 pcs/type.

# X-ON Electronics

Largest Supplier of Electrical and Electronic Components

*Click to view similar products for [Amphenol manufacturer:](#)*

Other Similar products are found below :

[PT01SE-16-8P\(027\)](#) [PT01SE-16-8P\(476\)](#) [EN2997SE01006MN](#) [CTV06RW-11-2JB-LC](#) [JTPQ00RT-16-35P\(453\)](#) [MS3106B18-11PX](#)  
[TRX10GDP0311A1](#) [GTS030-18-11S-116](#) [10-507142-843](#) [D38999/26JD19SALC](#) [D38999/26JD18PA](#) [JT07RT-22-35P](#) [D38999/26JD18SALC](#)  
[D38999/26JD18JA](#) [AIB30-14S-A7SC-C14-B30](#) [PT02E8-2S-072](#) [97-3102A22-10SW-958](#) [97-3102A22-10SX-958](#) [97-3102A22-10SY-958](#) [97-](#)  
[3102A22-5SW-959](#) [97-3102A22-5SX-959](#) [TVS06RF-17-35AD](#) [MS27468E25F43S](#) [97-3101A14S-9PX-959](#) [97-3101A14S-9PW-959](#) [JT07RT-8-35S](#)  
[MS27468E15F19PLC](#) [D38999/26JD35JA](#) [GTC030-28-21P-025-A31](#) [AIB2-22-14SC-072](#) [AIB2-22-22SC-RDS-072](#) [TVPS00RK-11-2AC](#) [AIB2-22-](#)  
[22PC-072](#) [100-007-213-002-001](#) [MS3108B28-15PY](#) [JT07RT-22-14PB-453](#) [GTS00AF28-7S](#) [2M801-010-01M16-5SA](#) [TV07DZ-23-151S-S1](#)  
[TV07DZ-23-151S-S1AD](#) [TVS06RF-21-79S\(LC\)](#) [TVS07RF-21-79S\(LC\)](#) [GTS00A-28-84S](#) [GTCL01-24-2SW-025-B30](#) [AIB30-14S-5SC-L](#) [AIB30-](#)  
[14S-5SXC-L](#) [97-3108A14S-5PX](#) [TVS07RF-19-11BB](#) [CTVS06RF-17-6BB](#) [CTVS06RF-17-35BB](#)