

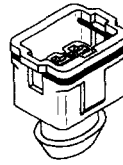
Timer Housings, Loaded, with Locking Spring and Seal



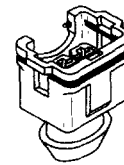
METRIC

Product Facts

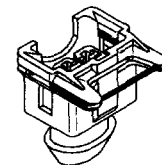
- Housing of flame-retardant polyamide
- Unmistakable keying
- Additional contact locking device
- Temperature Range—
-40°C to +110°C
- Creepage distance and air gap according to requirements
- Track resistance KC 250



Type A



Type B



Type C

No. of Positions	Color	Material	Part Numbers		
			Type A	Type B	Type C
2	natural	glass-filled 13%	—	825414	—
		glass-filled 30%	—	1-825414-0	—
	light grey	glass-filled 30%	—	—	827551-1
	grey	glass-filled 13%	826008-1	825414-1	—
		glass-filled 30%	1-826008-1	1-825414-1	827551-2
	green	glass-filled 13%	826008-2	825414-2	—
		glass-filled 30%	1-826008-2	1-825414-2	827551-6
	blue	glass-filled 13%	826008-3	825414-3	—
		glass-filled 30%	1-826008-3	1-825414-3	827551-5
	black	glass-filled 13%	826008-5	825414-5	—
		glass-filled 30%	1-826008-5	1-825414-5	827551-3
	brown	glass-filled 13%	826008-6	825414-6	—
		glass-filled 30%	1-826008-6	1-825414-6	827551-4
	white	glass-filled 13%	826008-7	—	—
	yellow	glass-filled 13%	826008-8	—	—
		glass-filled 30%	—	—	827551-8
		glass-filled 30%	—	—	827551-7
		black	—	—	828739-1 ¹
		natural	—	—	828739-2 ¹
		red	—	—	828739-3 ¹
	grey	—	—	828657-2 ²	
	brown	—	—	828657-4 ²	
	blue	—	—	828657-5 ²	
	green	—	—	828657-6 ²	
		—	—	828748-3 ³	
	yellow	—	—	828657-8 ²	
		—	—	827546-3 ³	
3	black	glass-filled 30%	—	—	1-827578-1
		—	—	—	828748-2 ²
	grey	glass-filled 30%	—	—	1-827578-2
		—	—	—	828748-1 ²
	white	—	—	—	1-827578-3 ³
		—	—	—	828748-6 ²
	green	—	—	—	1-827578-4 ³
		—	—	—	828748-3 ³
	black	—	—	—	828748-4 ²
	brown	—	—	—	828748-5 ²
blue	—	—	—	828748-7 ²	
red	—	—	—	828748-8 ²	
yellow	—	—	—	—	
4	—	—	215897-1	—	—
5	black	glass-filled 30%	—	—	827579-1
		glass-filled 13%	827656-1	—	—
	grey	glass-filled 30%	—	—	827579-2
	—	—	—	—	963013-1 ²
7		glass-filled 13%	827216-1	—	—
	black	glass-filled 13%	—	—	827572-1
		glass-filled 30%	—	—	827580-1
	grey	glass-filled 30%	—	—	827580-2
	—	—	—	—	828893-1
15		—	144410-1	—	—
		—	142172-1	—	—

Blade-Type Connectors
AMP Timer Connectors

¹For Standard-Power-Timer
SOURCE: Catalog 124799

²For Junior-Power-Timer

³For Junior-Timer

**Specifications
subject to change.**

1-800-522-6752
Product Information Center/ AMP FAX Service

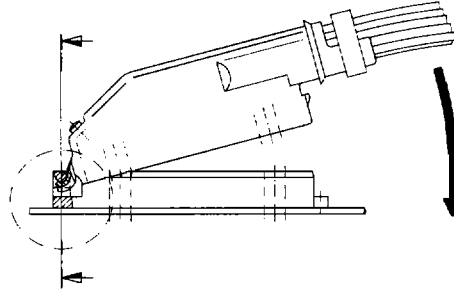
1-800-722-1111
Tooling/Technical Assistance Center

METRIC

Additional Timer Housings

Pivot Principle

In order to connect high position connectors, there are two methods: pivot principle (sequential connection spread over an angle) or through the use of an insertion/extraction tool which allows parallel connection of male and female connectors.



12, 15, and 16 Position Housings

12 Position
Part No. 827603-1

Mates with—
Part No. 827229

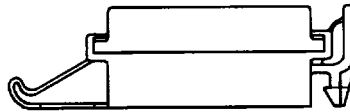
15 Position
Part No. 926171-1 (black)
Part No. 926171-2 (yellow)

Mates with—
Part No. 826703
Part No. 827467

16 Position
Part No. 827584-1 (black)
Part No. 827584-2 (yellow)

Mates with—
Part No. 827539
Part No. 828662

Note: 16 Pos. Housing Dim. (Typ.)—84.5 [2.54] L x 16.5 [0.65] W x 22.0 [0.87] H



25 Position Housings

25 Position
Part No. 925470-1 (black)
Part No. 925470-2 (yellow)

Mates with—
Part No. 826140

25 Position
Part No. 925471-1 (black)
Part No. 925471-2 (yellow)

Mates with—
Part No. 826141
Part No. 826195

Note: Housing Dim. (Typ.)—79.6 [3.13] L x 11.7 [0.46] W x 22.0 [0.87] H



METRIC

Additional Timer Housings

(Continued)

25 Position Housings

(Continued)

Note: Housing Dim. (Typ.)—150.3 [5.92] L x 28.5 [1.12] W x 41.0 [1.61] H

25 Position

Part Numbers:

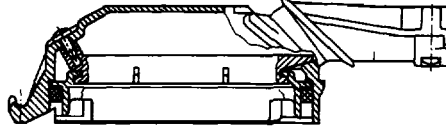
827249-1 without Strain Relief

827249-2 with Strain Relief

827249-3 with Strain Relief

827249-4 with Strain Relief

827047-1



For Junior-Power-Timer Contacts

Part No. 963317-1

Mates with—

Part No. 827050

Part No. 827019

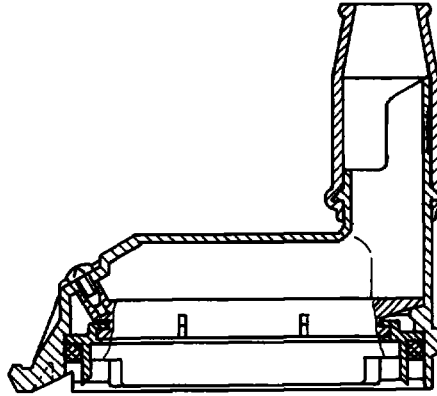
25 Position

Part No. 963325-1

Mates with—

Part No. 827050

Part No. 827019



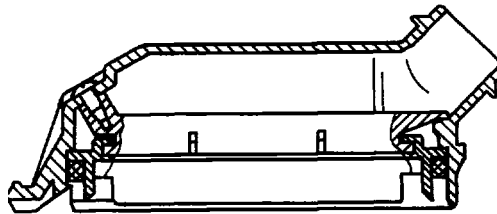
25 Position

Part No. 827591-1

Mates with—

Part No. 827050

Part No. 827019



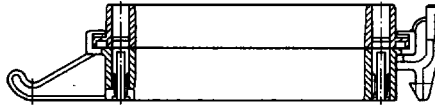
Blade-Type Connectors
AMP Timer Connectors

METRIC

Additional Timer Housings (Continued)

25 Position Housings (Continued)

Note: Housing Dim. (Typ.)—88.0 [3.46] L x 16.2 [0.64] W x 22.0 [0.87] H



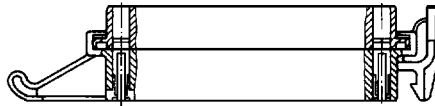
25 Position
Part No. 827534-1

Mates with—
Part No. 827535

25 Position
Part No. 827553-1

Mates with—
Part No. 342651

Note: Housing Dim. (Typ.)—88.0 [3.46] L x 16.2 [0.64] W x 22.0 [0.87] H



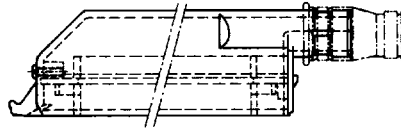
Additional Coding
Part No. 828923

Mates with—
Part No. 344529

35 Position Housings

35 Position
Part No. 826000-1
Part No. 826000-2
Part No. 826000-3
Part No. 826000-4
Part No. 826000-5
Part No. 826000-6

Note: Housing Dim. (Typ.)—149.5 [5.89] L x 29.0 [1.14] W x 39.0 [1.54] H



For Junior-Power-Timer Contacts

Part No. 963318-1
Part No. 963318-2
Part No. 963318-3
Part No. 963318-4

Mates with—
Part No. 825213
Part No. 828822
Part No. 827408
Part No. 827398
Part No. 826115
Part No. 827399

Note: Housing Dim. (Typ.)—151.1 [5.94] L x 25.0 [0.98] W x 39.0 [1.54] H



35 Position
Part No. 827663

Mates with—
Part No. 825213
Part No. 828822
Part No. 827408
Part No. 827398
Part No. 826115
Part No. 827399

Color	Part Numbers	
	Assembly	Connector Housing
Red	827663-1	927555-1
White	827663-2	927556-1
Blue	827663-3	927557-1
Red	827663-4	927558-1
Natural	827663-5	928556-1
Black	827663-6	928557-1
Black	827663-7	929556-1

Note: For more information on coding, consult AMP.

METRIC

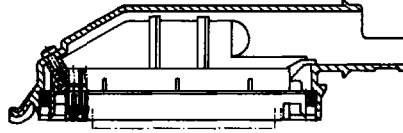
Additional Timer Housings (Continued)

Note: Housing Dim. (Typ.)—168.0 [6.61] L x 25.0 [0.98] W x 47.0 [1.85] H

35 Position Housings (Continued)

35 Position Housing with Round Cable Exit

Mates with—
Part No. 825213
Part No. 828822
Part No. 827408
Part No. 827398
Part No. 826115
Part No. 827399



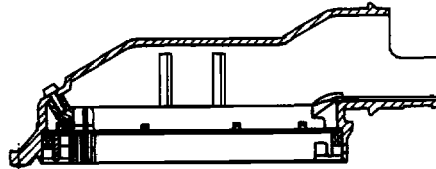
Part Numbers		Part Numbers	
Assembly	Connector Housing	Assembly	Connector Housing
963061-1	962075-1	827257-9	927434-1
963062-1	962076-1	1-827257-8	927391-1
828860-1	929565-1	827257-8	927391-1
3-827257-0	927122-1	1-827257-7	927391-1
963060-1	962074-1	827257-7	927391-1
963059-1	962073-1	1-827257-6	927370-1
963043-1	962072-1	827257-6	927370-1
828880-1	929644-1	827257-5	927229-1
828826-1	929536-1	827257-4	927127-1
1-827257-4	928688-1	827257-3	927120-1
1-827257-3	928612-1	827257-2	927118-1
1-827257-2	928611-1	827257-1	927060-1
1-827257-1	927539-1		
1-827257-0	927538-1		

Rubber Boot Part No. 826779

35 Position Housing with Oval Cable Exit

Mates with—
Part No. 825213
Part No. 828822
Part No. 827408
Part No. 827398
Part No. 826115
Part No. 827399

Note: Housing Dim. (Typ.)—163.0 [6.42] L x 25.0 [0.98] W x 58.0 [2.28] H



Part Numbers	
Assembly	Connector Housing
828536-1	928165-1
828459-1	928165-1
828534-1	928136-1
828397-1	928136-1
828396-1	928137-1
828535-1	928137-1

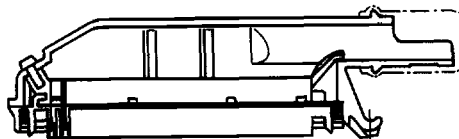
Note: For more information on coding, consult AMP.

35 Position Housing

Part No. 828632-1
Part No. 828632-3
Part No. 828633-1
Part No. 828633-3

Mates with—
Part No. 825213
Part No. 828822
Part No. 827408
Part No. 827398
Part No. 826115
Part No. 827399

Note: Housing Dim. (Typ.)—158.0 [6.22] L x 25.0 [0.98] W x 40.0 [1.57] H



Blade-Type Connectors
AMP Timer Connectors

METRIC

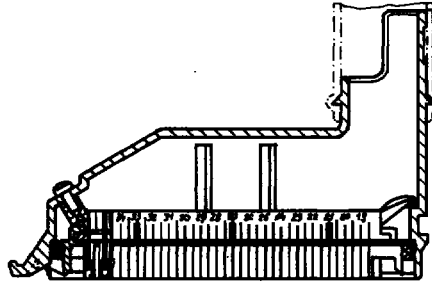
Additional Timer Housings (Continued)

35 Position Housings (Continued)

35 Position Housing
 Part No. 828699

- Mates with—
 Part No. 825213
 Part No. 828822
 Part No. 827408
 Part No. 827398
 Part No. 826115
 Part No. 827399

Note: Housing Dim. (Typ.)—125.0 [4.92] L x 25.0 [0.98] W x 85.0 [3.35] H

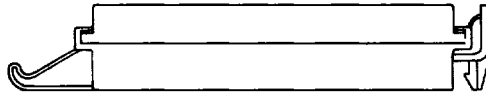


Part Numbers	
Assembly	Connector Housing
828699-1	928615-1
828699-2	928615-2
828699-3	928615-3
828699-4	928615-4
828699-5	928615-5
828699-6	928615-6
828699-7	928681-1

35 Position Housing
 Part No. 827667-1

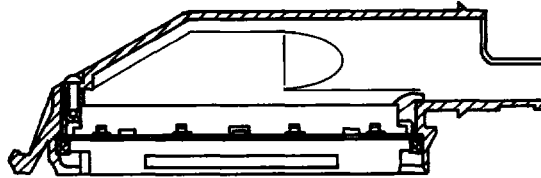
- Mates with—
 Part No. 827137

Note: Housing Dim. (Typ.)—113.0 [4.45] L x 16.2 [0.67] W x 22.0 [0.87] H



38 Position Housing
 Part No. 828808-1
 Part No. 828808-2
 Part No. 828808-3

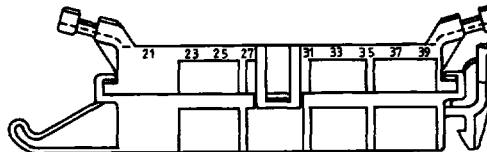
- Mates with—
 Part No. 827698
 Part No. 828989



39 Position Housing
 Part No. 828771-1

- Mates with—
 Part No. 828772
 Part No. 828773
 Part No. 963578
 Part No. 963574

Note: Housing Dim. (Typ.)—88.0 [3.46] L x 11.4 [0.45] W x 22.0 [0.87] H



Blade-Type Connectors
 AMP Timer Connectors

6

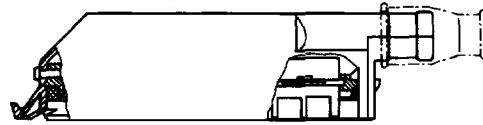
METRIC

Additional Timer Housings (Continued)

55 Position Housings

Note: Housing Dim. (Typ.)—149.5 [5.89] L x 25.0 [0.98] W x 39.0 [1.54] H

55 Position Housing
Part No. 828761-1
(8 x Junior-Power-Timer,
47 x Micro-Timer I)



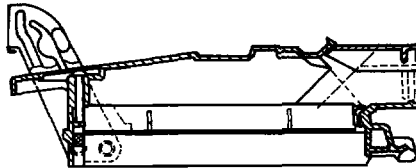
Mates with—
Part No. 828763

55 Position Housing
Part No. 963534

Coding 8:
Part No. 963534-1

Coding 12:
Part No. 1-963534-1

Note: For more information on codings,
consult AMP.



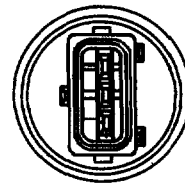
Mates with—
Part No. 142723-2 with
Part No. 142719-2
Part No. 963063

Male Connectors, Single Row and Double Row

Note: Housing Dim. (Typ.)—30.4 [1.20] Dia. x 32.0 [1.26] L

3 Position
Part No. 827404-1

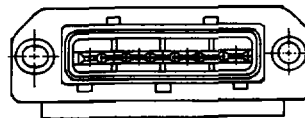
Mates with—
Part No. 827578
Part No. 282191



7 Position
Part No. 827405-1
(90° Solder Leg Exit)
Part No. 827405-2
(180° Solder Leg Exit)

Note: Housing Dim. (Typ.)—65.0 [2.56] L x 26.0 [1.02] W x 19.0 [0.75] H

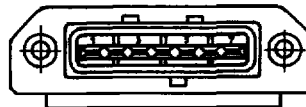
Mates with—
Part No. 827216
Part No. 827572
Part No. 827580
Part No. 828918
Part No. 282194



7 Position
Part No. 828945-1

Note: Housing Dim. (Typ.)—65.0 [2.56] L x 26.0 [1.02] W x 19.0 [0.75] H

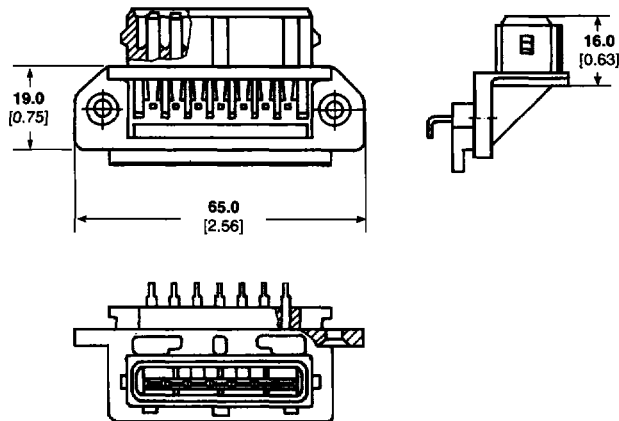
Mates with—
Part No. 828919



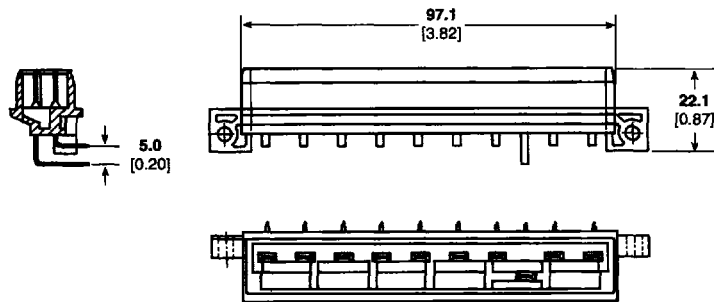
METRIC

Male Connectors, Single Row and Double Row (Continued)

7 Position
Part No. 827658-1
Mates with—
Part No. 827216
Part No. 827572
Part No. 827580
Part No. 828918
Part No. 282194



10 Position
Part No. 827398-1
Mates with—
Part No. 826000
Part No. 963318
Part No. 827663
Part No. 827257
Part No. 828632
Part No. 828633
Part No. 828699
Part No. 282195
Part No. 282197



12 Position
Part No. 827229-1 (black)
 Brass, tin plated

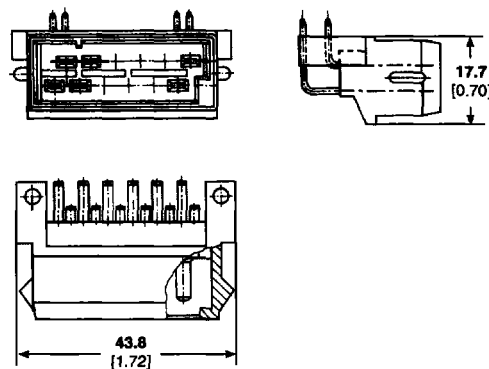
Part No. 827229-2 (black)
 Brass, silver plated

Part No. 827229-3 (black)
 Brass, gold plated

Part No. 827229-4 (brown)
 Brass, tin plated

Part No. 827229-5 (black)
 Brass, pre-tin plated

Mates with—
Part No. 827603



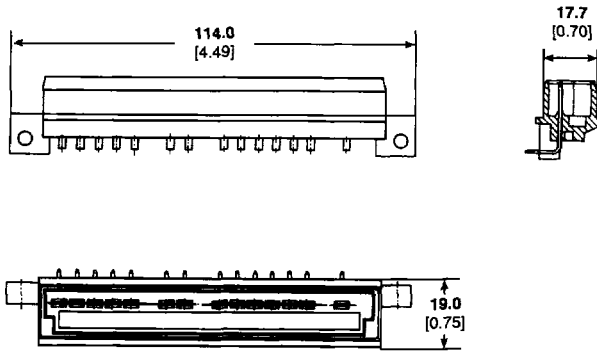
Blade-Type Connectors
 AMP Timer Connectors

METRIC

Male Connectors, Single Row and Double Row
 (Continued)

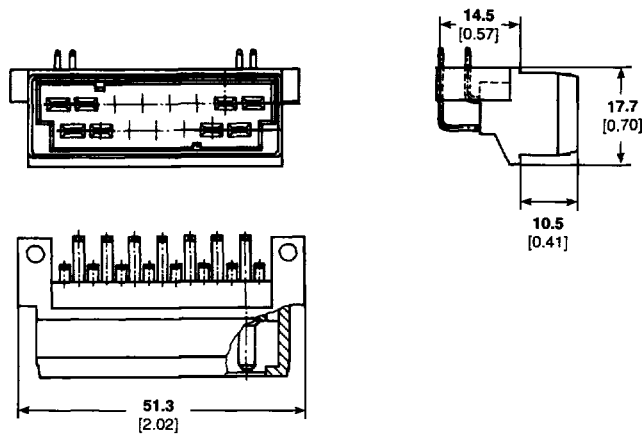
14 Position
 Part No. 826115-1
 (Selective Loading, Single Row)
 Brass, tin plated

Mates with—
 Part No. 826000
 Part No. 963318
 Part No. 827663
 Part No. 827257
 Part No. 828632
 Part No. 828633
 Part No. 828699
 Part No. 282195
 Part No. 282197



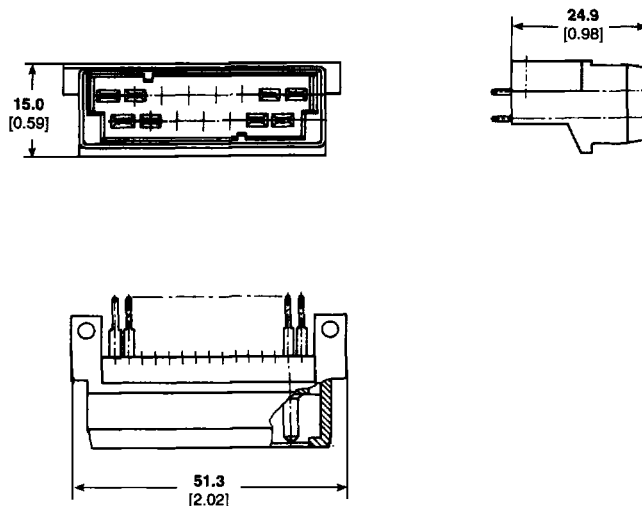
15 Position
 Part No. 826703-1 (black)
 Brass, tin plated
 Part No. 826703-2 (black)
 Brass, silver plated
 Part No. 826703-3 (blue)
 Part No. 826703-4 (yellow)
 Part No. 2-826703-1 (black)

Mates with—
 Part No. 926171
 Part No. 282199



15 Position
 Part No. 827467-1 (black)
 Part No. 827467-2 (yellow)

Mates with—
 Part No. 926171
 Part No. 282199

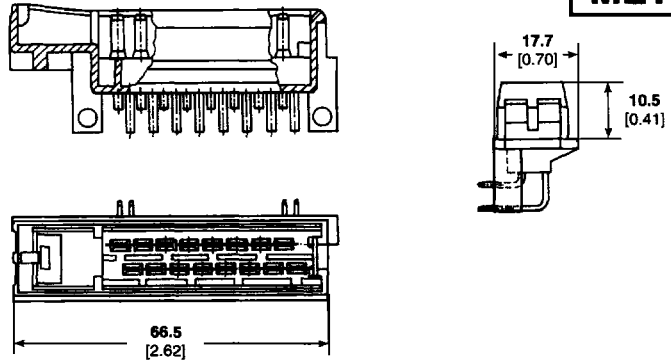


Blade-Type Connectors
 AMP Timer Connectors

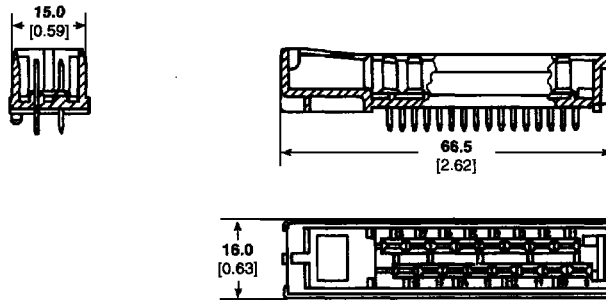
Male Connectors, Single Row and Double Row (Continued)

METRIC

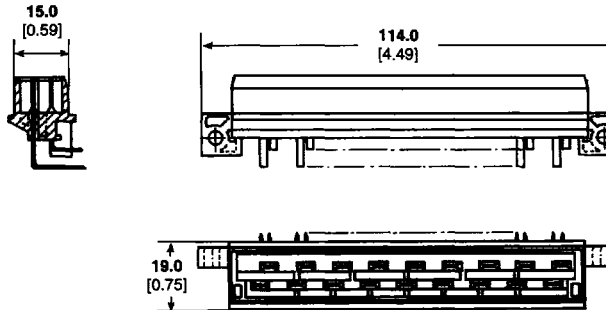
16 Position
Part No. 827539-1 (black)
 Brass, tin plated
Mates with—
Part No. 827584



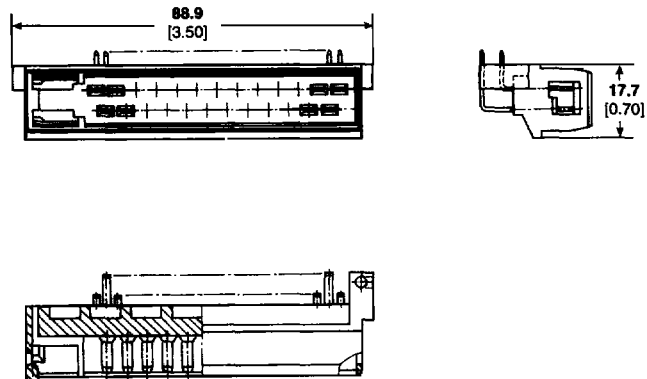
16 Position
Part No. 828662-1
Mates with—
Part No. 827584



18 Position
Part No. 827399-1
Mates with—
Part No. 826000
Part No. 963318
Part No. 827663
Part No. 827257
Part No. 828632
Part No. 828633
Part No. 828699
Part No. 282195
Part No. 282197



25 Position
3.1 [.122] Mounting Hole Dia.
Part No. 826140-1 (black)
 Brass, tin plated
Part No. 826140-2 (yellow)
 Brass, tin plated
Part No. 826140-3 (green)
 Brass, tin plated
Part No. 826140-4 (brown)
 Brass, tin plated
Part No. 826140-5 (black)
 Brass, silver plated
Mates with—
Part No. 925470



5
 Blade-Type Connectors
 AMP Timer Connectors

METRIC

Male Connectors, Single Row and Double Row
 (Continued)

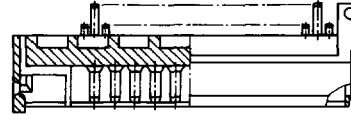
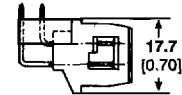
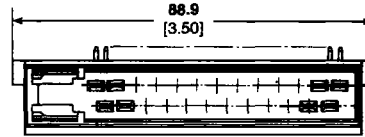
25 Position
4.1 [.161] Mounting Hole Dia.
Part No. 826141-1 (black)
 Brass, tin plated

Part No. 826141-2 (yellow)
 Brass, tin plated

Part No. 826141-3 (black)
 Brass, silver plated

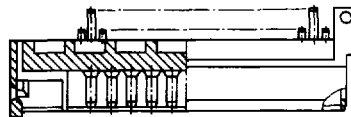
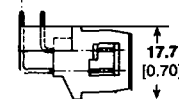
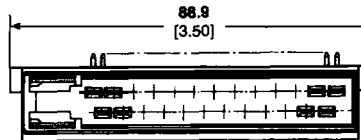
Part No. 826141-4 (yellow)
 Brass, silver plated

Mates with—
Part No. 925471



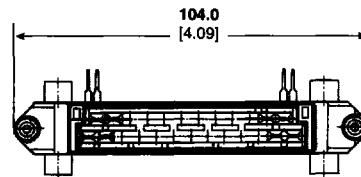
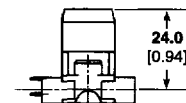
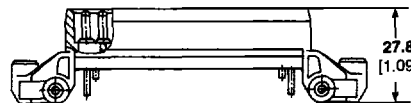
25 Position
Part No. 826195-1 (black)
 Brass, tin plated
Part No. 826195-2 (yellow)
 (Same as Part No. 826140 but
 different keying)

Mates with—
Part No. 925471



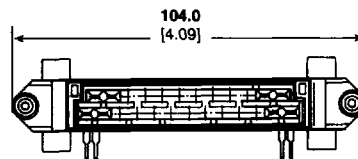
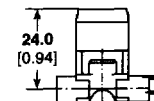
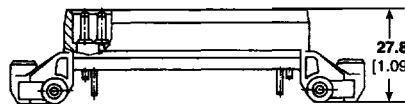
25 Position
Part No. 827050-1 (black)
 Brass, tin plated
Part No. 827050-2 (black)
 Brass, gold plated
Part No. 2-827050-1 (black)
 (with center plate)

Mates with—
Part No. 827249
Part No. 827047
Part No. 963317
Part No. 963325
Part No. 827591
Part No. 281810



25 Position
Part No. 827019-1
 Brass, tin plated

Mates with—
Part No. 827249
Part No. 827047
Part No. 963317
Part No. 963325
Part No. 827591
Part No. 281810

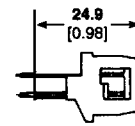
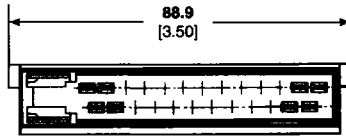


SOURCE: Catalog 124799

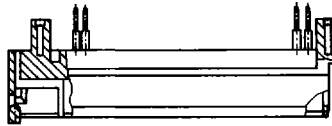
5
Blade-Type Connectors
AMP Timer Connectors

Male Connectors, Single Row and Double Row (Continued)

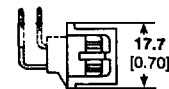
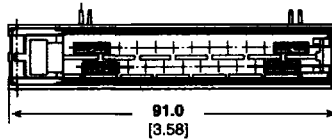
METRIC



25 Position
Part No. 827468-1 (black)
 Brass, tin plated
Mates with—
Part No. 925470



25 Position
Part No. 827535-1 (black)
 Brass, tin plated
Part No. 827535-2 (yellow)
Part No. 827535-3 (black)
Part No. 827535-4 (black)
Part No. 1-827535-2 (black)
Part No. 2-827535-2 (black)

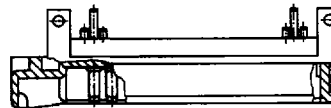


Part No. 342650-1
 Brass, tin plated
Part No. 342650-2
 Brass, pre-tin plated

Mates with—
Part No. 827534

Additional Coding
 (yellow)
Part No. 342651-1

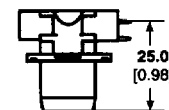
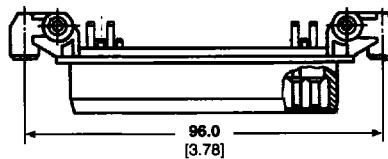
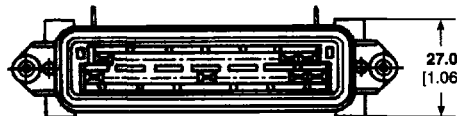
Mates with—
Part No. 827553
Part No. 344529-1
Part No. 828923



Blade-Type Connectors
 AMP Timer Connectors

25 Position
Part No. 828661-1

Mates with—
Part No. 827249
Part No. 827047
Part No. 963317
Part No. 963325
Part No. 827591
Part No. 281810



METRIC

Male Connectors, Single Row and Double Row
 (Continued)

35 Position

Part No. 828822-1 (black)
 Brass, tin plated

Part No. 828822-2 (black)
 Brass, silver plated

Part No. 828822-3 (black)
 Brass, gold plated

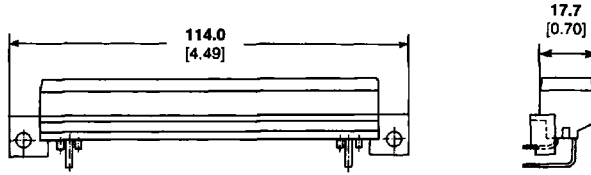
Part No. 828822-5 (black)
 Brass, tin plated

Part No. 828822-6 (blue)
 Brass, silver plated

Stitched Version of
Part No. 825213

Mates with—

- Part No. 826000
- Part No. 963318
- Part No. 827663
- Part No. 827257
- Part No. 828632
- Part No. 828633
- Part No. 828699
- Part No. 282195
- Part No. 282197



35 Position

Part No. 825213-1 (black)

Part No. 825213-2 (black)

Part No. 825213-3 (black)

Part No. 1-825213-5 (black)

Part No. 2-825213-1 (black)

Brass, tin plated

Part No. 2-825213-2 (black)

Brass, silver plated

Part No. 2-825213-3 (black)

Brass, gold plated

Part No. 2-825213-5 (black)

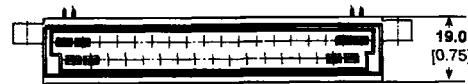
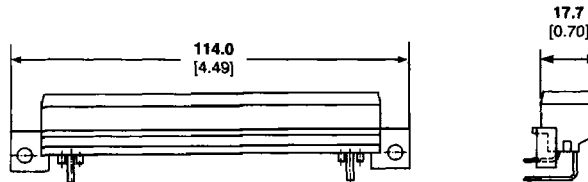
Brass, tin plated

Part No. 2-825213-6 (blue)

Part No. 3-825213-1 (black)

Mates with—

- Part No. 826000
- Part No. 963318
- Part No. 827663
- Part No. 827257
- Part No. 828632
- Part No. 828633
- Part No. 828699
- Part No. 282195
- Part No. 282197



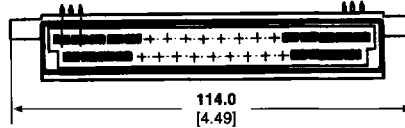
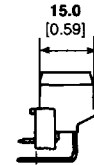
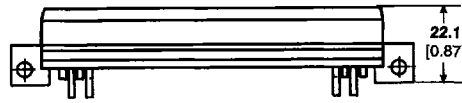
Blade-Type Connectors
 AMP Timer Connectors

Male Connectors, Single Row and Double Row (Continued)

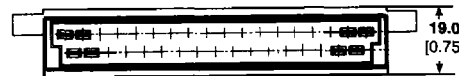
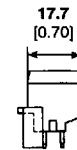
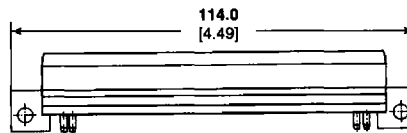
METRIC

35 Position
Part No. 827408-1
 (Same as Part No. 825213, but with 4.2 [1.65] Mounting Hole Diameter)

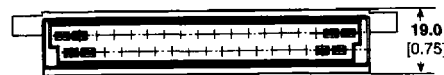
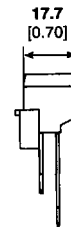
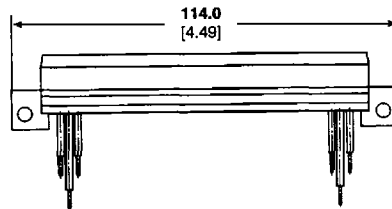
Mates with—
Part No. 826000
Part No. 963318
Part No. 827663
Part No. 827257
Part No. 828632
Part No. 828633
Part No. 828699
Part No. 282195
Part No. 282197



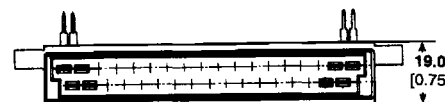
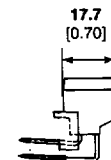
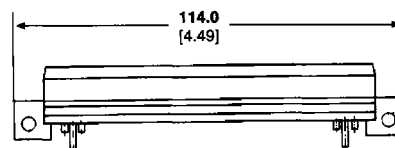
35 Position
Part No. 827254-1 (black)
 Brass, tin plated



35 Position
Part No. 826822-1 (black)
 Brass, tin plated



35 Position
Part No. 826611-1 (black)
 Brass, tin plated



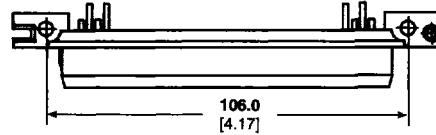
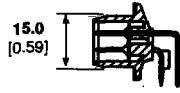
Blade-Type Connectors
AMP Timer Connectors

METRIC

Male Connectors, Single Row and Double Row
 (Continued)

35 Position
 Part No. 827657-1

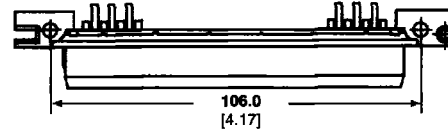
- Mates with—
 Part No. 826000
 Part No. 963318
 Part No. 827663
 Part No. 827257
 Part No. 828632
 Part No. 828633
 Part No. 828699
 Part No. 282195
 Part No. 282197



35 Position
 Part No. 828823-1

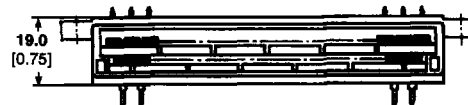
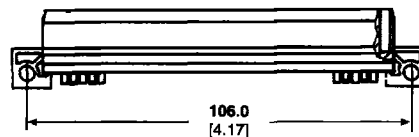
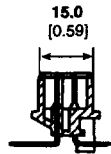
Stitched Version of
 Part No. 827657

- Mates with—
 Part No. 826000
 Part No. 963318
 Part No. 827663
 Part No. 827257
 Part No. 828632
 Part No. 828633
 Part No. 828699
 Part No. 282195
 Part No. 282197



35 Position
 Part No. 963183-1

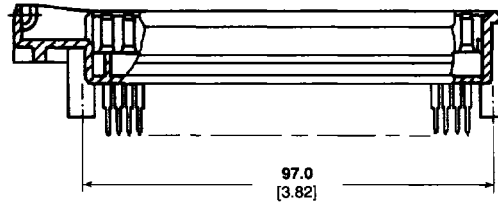
- Mates with—
 Part No. 826000
 Part No. 963318
 Part No. 827663
 Part No. 827257
 Part No. 828632
 Part No. 828633
 Part No. 828699
 Part No. 282195
 Part No. 282197



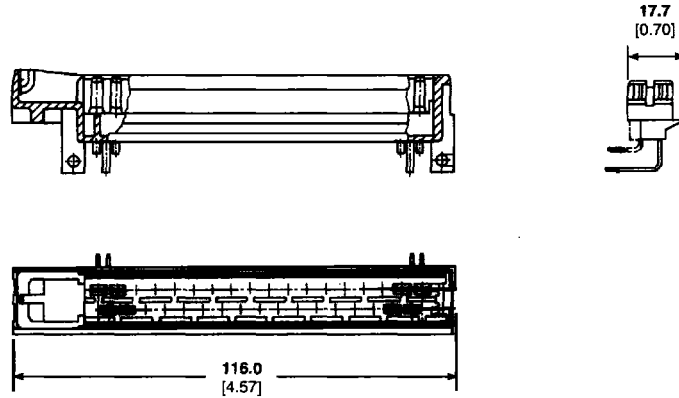
METRIC

Male Connectors, Single Row and Double Row
 (Continued)

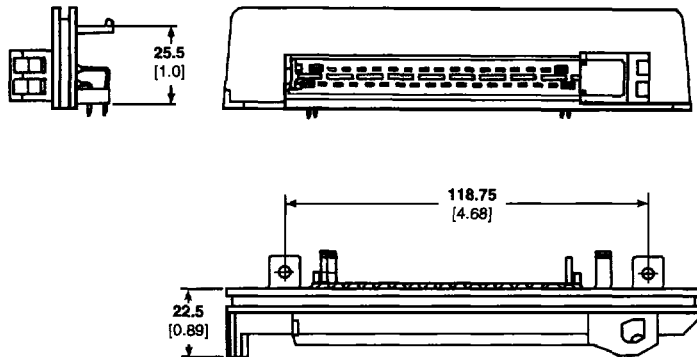
35 Position
Part No. 827439-1
Mates with—
Part No. 827667



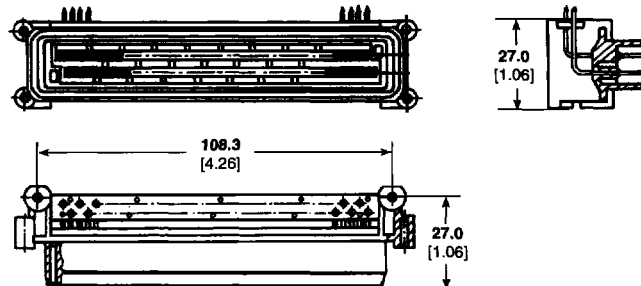
35 Position
Part No. 827137-1 (black)
 Brass, tin plated
Part No. 827137-2 (grey)
 Brass, tin plated
Part No. 827137-3 (grey)
 Brass, silver plated
Mates with—
Part No. 827667



35 Position with Flange
Part No. 827360-1
Mates with—
Part No. 827667



38 Position
Part No. 827698-1
Mates with—
Part No. 828808



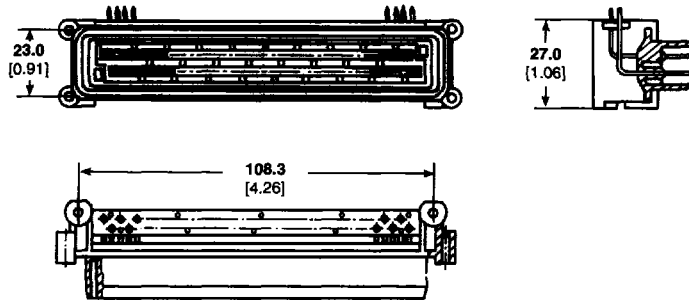
6
 Blade-Type Connectors
 AMP Timer Connectors

METRIC

Male Connectors, Single Row and Double Row (Continued)

38 Position
Part No. 828989-1 (black)
Part No. 828989-2 (black)
 (Same as Part No. 827698
 except for mounting holes)

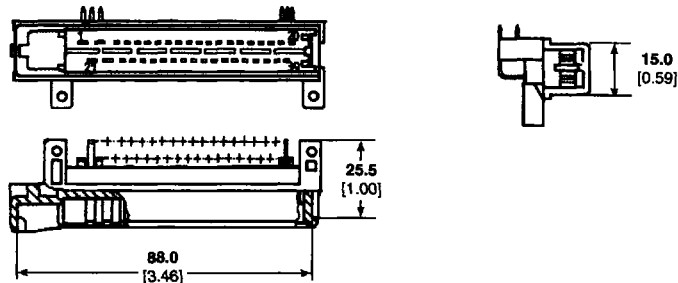
Mates with—
Part No. 828808



39 Position
(90° Solder leg exit)
Part No. 828773-1
 Brass, tin plated

Part No. 828773-2
 Phosphor bronze, tin plated

Mates with—
Part No. 828771

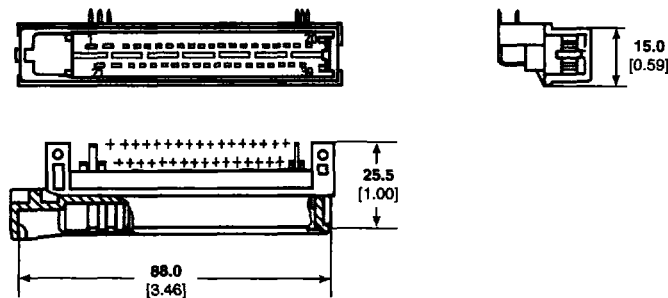


39 Position
(90° Solder leg exit)

Part No. 963578-1
 Brass, tin plated

Part No. 963578-2
 Phosphor bronze, tin plated

Mates with—
Part No. 828771



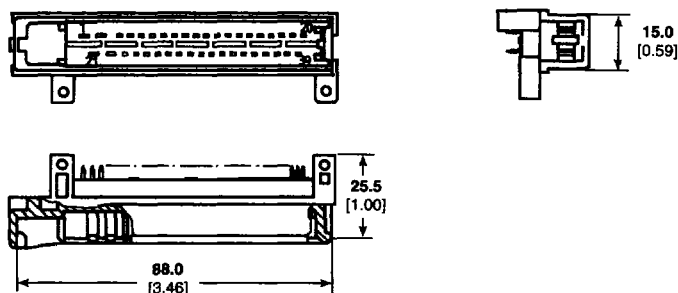
39 Position
(180° Solder leg exit)

Part No. 828772-1
 Brass, tin plated

Part No. 828772-2
 Phosphor bronze, tin plated

Part No. 828772-3
 Brass, tin-gold plated

Mates with—
Part No. 828771



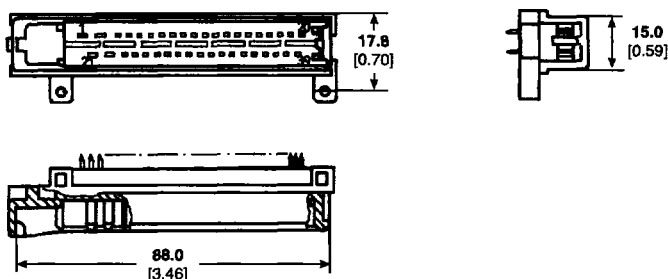
39 Position
(180° Solder leg exit)

Part No. 963574-1
 Brass, tin plated

Part No. 963574-2
 Phosphor bronze, tin plated

Part No. 963574-3
 Brass, tin-gold plated

Mates with—
Part No. 828771



SOURCE: Catalog 124799

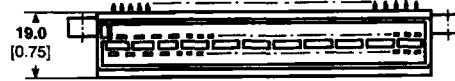
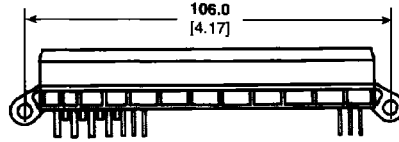
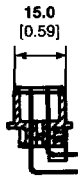
Blade-Type Connectors
 AMP Timer Connectors

METRIC

Male Connectors, Double Row and Triple Row

55 Position
 Part No. 828763-1

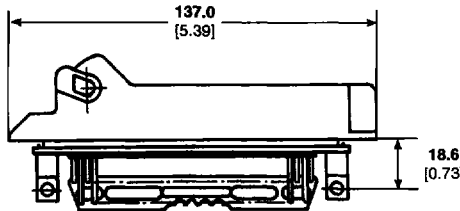
Mates with—
 Part No. 828761



55 Position
 Coding 8:
 Part No. 963063-1

Coding 7:
 Part No. 963063-2

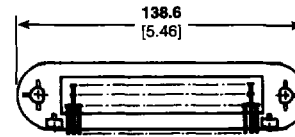
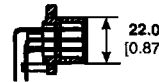
Mates with—
 Part No. 963534



55 Position
 Part No. 142723-2

Frame
 Part No. 142719-2

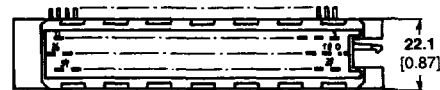
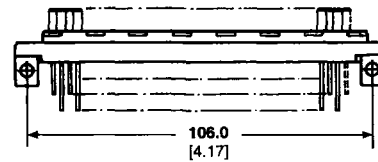
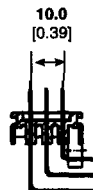
Mates with—
 Part No. 963534



55 Position
 Part No. 963042

See Drawing 87-9435-16

Mates with—
 Part No. 963041



Blade-Type Connectors
 AMP Timer Connectors

X-ON Electronics

Largest Supplier of Electrical and Electronic Components

Click to view similar products for [Automotive Connectors](#) category:

Click to view products by [TE Connectivity](#) manufacturer:

Other Similar products are found below :

[003-018-000](#) [600858](#) [60403001](#) [60993906-B](#) [60993913-B](#) [629515004020001](#) [M902-2131](#) [M902-2161](#) [M902-2344](#) [72.330.1035.1](#)
[73.353.4028.0](#) [F118010](#) [F119300-B](#) [F132210](#) [F132210-B](#) [F166900](#) [F180100](#) [F258300](#) [F258300-B](#) [F294300-B](#) [F339100](#) [F339700](#) [F358300-](#)
[B](#) [F374110](#) [F407400](#) [F412210](#) [F427600](#) [F444110](#) [F487000](#) [F495100-B](#) [F500900-B](#) [F509500B-B](#) [770444-1](#) [776880-1](#) [827153-1](#) [881735-1](#)
[8N1515-32-24P](#) [9-1326727-8](#) [9-1326729-8](#) [925467-1](#) [925474-1](#) [928905-1](#) [936398-2](#) [964562-1](#) [964562-4](#) [964731-2](#) [965051-1](#) [968782-1](#)
[GT17SA-8DS-HU](#) [GT17VS-10DP-5.2CF](#)