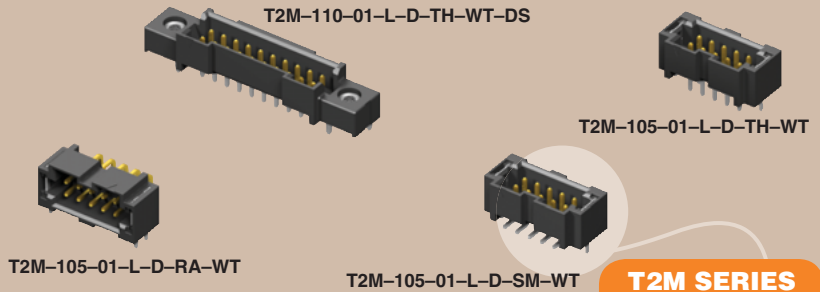




(2,00 mm) .0787"



T2M SERIES

HIGH RELIABILITY CABLE HEADER

SPECIFICATIONS

For complete specifications and recommended PCB layouts see www.samtec.com?T2M

Insulator Material: Black Liquid Crystal Polymer

Terminal Material: Phosphor Bronze

Plating: Sn or Au over 50µ" (1,27 µm) Ni

Current Rating (T2M/S2SD): 3.8 A per pin (1 pin powered per row)

Operating Temp Range: -55°C to +105°C with Tin; -55°C to +125°C with Gold

RoHS Compliant: Yes

Processing: Lead-Free Solderable: Yes

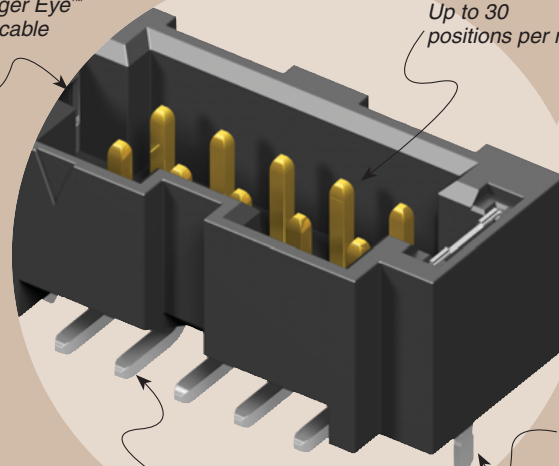
SMT Lead Coplanarity: (0,10 mm) .004" max

Mates with: S2SD, S2M, S2SDT



Mates with Tiger Eye™ discrete wire cable assemblies

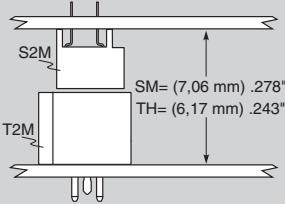
Up to 30 positions per row



Optional weld tab

Choice of Surface Mount, Through-hole or Right Angle

MATED HEIGHT



RECOGNITIONS

For complete scope of recognitions see www.samtec.com/quality



05, 07, 10, 15, 20, 25, 30 (Per Row)

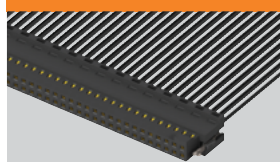
-L = 10µ" (0,25 µm) Gold on contact, Matte Tin on tail

-TH = Through-hole
-RA = Right Angle
-SM = Surface Mount

-WT = Weld Tab (S2SD & S2SDT, -SR/-DR required mate)
-DS = Screw Down (N/A with -RA) (mates with -S2M-DS, S2SD/S2SDT -SS/-DS option)
-K = (7,50 mm) .295" DIA Polyimide film Pick & Place Pad (-SM only)
-TR = Tape & Reel (-SM only)



OTHER SOLUTIONS

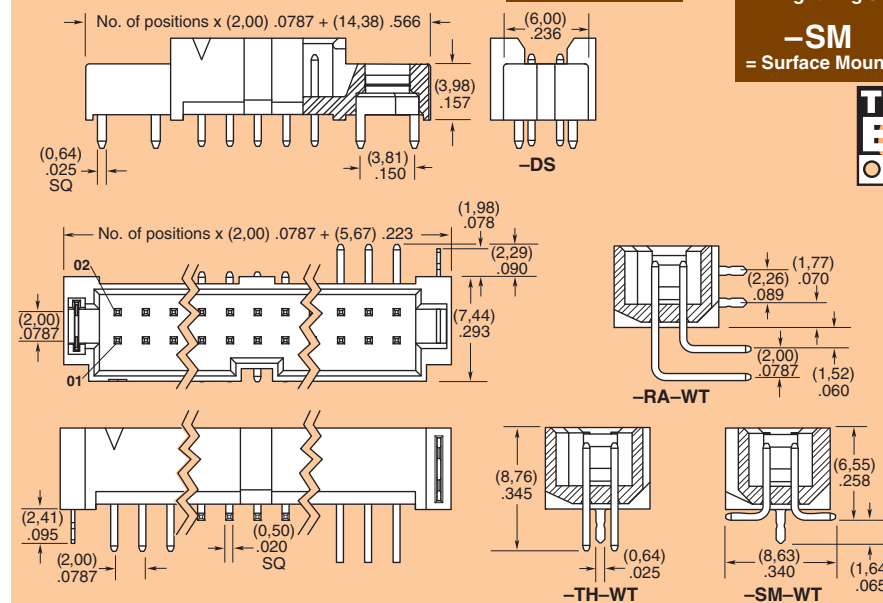


See S2SD in the discrete wire section or contact Samtec.

ALSO AVAILABLE (MOQ Required)

- Other platings Contact Samtec.

Note: Some lengths, styles and options are non-standard, non-returnable.



Due to technical progress, all designs, specifications and components are subject to change without notice.

WWW.SAMTEC.COM

X-ON Electronics

Largest Supplier of Electrical and Electronic Components

Click to view similar products for [FFC & FPC Connectors](#) category:

Click to view products by [Samtec](#) manufacturer:

Other Similar products are found below :

[HFW11R-1STE1H1LF](#) [FH29B-100S-0.2SHW\(99\)](#) [FA5S008HP1](#) [FH29B-120S-0.2SHW\(99\)](#) [FH29B-80S-0.2SHW\(99\)](#) [FHS-16](#) [FPH-2022G](#)
[52610-1075](#) [52610-1275](#) [52610-1934](#) [XF3M\(1\)-1415-1B-R100](#) [501864-3091-TR225](#) [0525594033](#) [086210010340800](#) [086222026001800](#)
[52271-2869-CUT-TAPE](#) [62674-201121DLF](#) [62684-36210E9ALF](#) [52610-1675](#) [52746-1671-TR250](#) [10051922-2810EHLF](#) [6-520415-9](#)
[BD021-09A-A1-0350-0200-0550-LD](#) [SFV6R-1STE9HLF](#) [XF3M-2915-1B-R100](#) [1658549-1](#) [62674-221121ALF](#) [46214008010800](#)
[046298003000883](#) [151660622](#) [842-816-2630-035](#) [AYF530665TA](#) [AYF351525](#) [046296011930846+](#) [AYF352325A](#) [046254020000800+](#)
[FH19C-13S-0.5SH\(99\)](#) [FH39J-51S-0.3SHW\(99\)](#) [AYF355125A](#) [AYF530365TA](#) [FH29B-44S-0.2SHW\(99\)](#) [SFW5R-2STAE9LF](#) [AYF351125A](#)
[AYF350725A](#) [62684-502100AHLF](#) [FH39-61S-0.3SHW\(99\)](#) [AYF414035A](#) [10064555-172520HLF](#) [AYF212335A](#) [504754-2500](#)