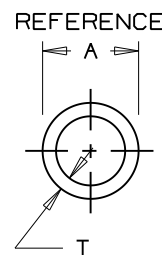
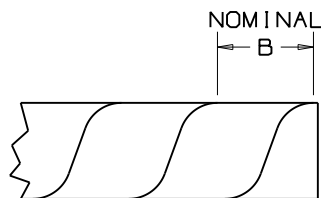


THIS COPY IS PROVIDED ON A RESTRICTED BASIS AND IS NOT TO BE USED IN ANY WAY DETRIMENTAL TO THE INTERESTS OF PANDUIT CORP.

*PANDUIT PART NUMBER	A IN (mm)	B IN (mm)	T IN (mm)	WEIGHT LBS / 100 FT (g)
T12F	.125 (3.2)	.218±.047 (5.5±1.2)	.030±.006 (0.8±0.2)	0.4 (181.4)
T19F	.188 (4.8)	.250±.047 (6.4±1.2)	.035±.008 (0.9±0.2)	0.6 (270.1)
T25F	.250 (6.4)	.375±.047 (9.5±1.2)	.040±.008 (1.0±0.2)	1.1 (498.9)
T38F	.375 (9.5)	.437±.047 (11.1±1.2)	.055±.010 (1.4±0.3)	2.2 (997.9)
T50F	.500 (12.7)	.500±.047 (12.7±1.2)	.060±.016 (1.5±0.4)	3.3 (1496.8)
T62F	.625 (15.9)	.625±.047 (15.9±1.2)	.062±.020 (1.6±0.5)	4.4 (1995.8)
T75F	.750 (19.1)	.875±.047 (22.2±1.2)	.065±.020 (1.7±0.5)	5.6 (2539.6)
T100F	1.000 (25.4)	1.125±.047 (28.6±1.2)	.070±.020 (1.8±0.5)	8.2 (3718.7)



NOTES:

- *1) See current price sheet for part number suffix designations, package size and part color.
- 2) For roll sizes larger than 10 ft., splicing may occur. For additional information, contact Product Management at 1-800-777-3300 ext.7432.

DIMENSIONS IN PARENTHESES ARE IN METRIC UNITS

CAD FILENAME/LAYERS

G00239D1_PB_NATPOLYWRAP_02

PANDUIT

CORP.

TINLEY PARK, ILLINOIS

(NATURAL) SPIRAL WRAP

UNLESS OTHERWISE SPECIFIED,
DIMENSIONAL TOLERANCES ARE:
(.X) ± ---- (.XXX) ± ----
(.XX) ± ---- ANGLES ± ----

UNLESS OTHERWISE SPECIFIED,
ALL DIMENSIONS ARE GIVEN
IN INCHES, THIRD ANGLE PROJECTION.

REV	DATE	BY	CHK	DESCRIPTION	ECN	R	CUST	SUP
2	6-23-97	JAD		ADDED NOTE 2	GB0239D1	2		
1	1/20/97	RJK		ADDED T19F TO DRAWING	GB0239D1	1		
R	6/5/96	CJG		INITIAL RELEASE	GB0239D1	R		

DRAWN BY
CJG
DATE
6/5/96
CHK'D

MAT'L:
POLYETHYLENE

SCALE
NONE
DRAWING NO.
GB0239D1
DWG
A
SIZE

X-ON Electronics

Largest Supplier of Electrical and Electronic Components

Click to view similar products for [Wire Identification](#) category:

Click to view products by [Panduit](#) manufacturer:

Other Similar products are found below :

[CU6337-000](#) [CU6342-000](#) [FCA-410-12](#) [11631010](#) [1-1768037-1](#) [1-1768037-2](#) [1-1768050-0](#) [PXLK-VI](#) [Q62184-1](#) [A64304-000](#) [QMT221](#)
[HK032WE1NF038B](#) [1330-0519-10](#) [1395199-1](#) [1395200-1](#) [1395202-1](#) [DMVF050WE-300S6](#) [D-SCE-1K-2.4-50-4-CS7834](#) [1538738-1](#)
[E90935-000](#) [EC1238-000](#) [EC1465-000](#) [EC1855-000](#) [EC1859-000](#) [EC1863-000](#) [EC5415-000](#) [EC7277-000](#) [EC7352-000](#) [EC7603-000](#)
[EC7707-000](#) [EC7735-000](#) [EC7768-000](#) [EC7828-000](#) [EC7854-000](#) [EC7952-000](#) [EC8128-000](#) [1768037-8](#) [1768041-7](#) [NC-127191-10-9](#)
[HS048WE2NF038B](#) [C03232-000](#) [HTCM-SCE-14-4H-9](#) [HTMS-3/16-9](#) [HT-SCE-1/4-2.0-4](#) [HT-SCE-3/16-2.0-4](#) [HTTMS-1/2-1.50-9](#) [HTTMS-](#)
[CM-1/2-4H-9](#) [HX-SCE-19.0-50-9](#) [HX-SCE-6.4-50-4](#) [C25254-000](#)