

42D Series Plug-in Switch Mode Power Supply Unit

INPUT

	MINIMUM	NORMAL	MAXIMUM
AC Input Voltage	90V AC	100 – 240V AC	264V AC
AC Input Frequency	47 Hz	50 / 60 Hz	63 Hz
AC Input Current – 115V AC (max)			0.8A
AC Input Current – 230V AC (max)			0.4A
AC Inrush Current* – 115V AC, 60Hz	No damage shall occur and the input fuse shall not blow.		
AC Inrush Current* – 230V AC, 50Hz			
Primary current protection	An internal fuse on the AC input line is provided.		
Configuration	3-conductors, <Active, Neutral, Earth>		

* At full-load, 25°C, cold start.

Power consumption at no load (maximum)

Input 110V AC 60 Hz	0.50W max
Input 230V AC 50 Hz	0.75W max

OUTPUT

MODEL	5V	12V	18V	24V
Normal DC Output Voltage	+5.0V	+12.0V	+18.0V	+24.0V
Minimum Load Current	0.0A	0.0A	0.0A	0.0A
Maximum Load Current	6.0A	3.5A	2.33A	1.75A
Maximum Output Power	30W	42W	42W	42W
Ripple and Noise *	75mV	120mV	180mV	240mV
Efficiency (min) **	70%	80%	80%	80%
Over-voltage protection (max)	6.5V DC	15.75V DC	21.6V DC	28V DC
Over-current protection ***	12A	8A	4.5A	3.5A
Total Output Regulation	+/- 5%			
Dynamic Load Regulation ****	+/- 5%			
Short-circuit protection	No damage when shorting the DC output to ground.			
Open-circuit protection	When primary power is applied with no load on any output level, no damage or hazardous conditions should occur.			
Drop-out	With half cycle input voltage drop-out, the unit shall meet the regulation requirement and operate within the prescribed voltages with a drop-out pulse repetition rate of 500mS under full load and with normal AC input voltage.			

* Voltage measured P-P at 20MHz and output parallel with 0.1uF & 47uF capacitor to ground. Temperature at 25°C and normal AC input voltage.

** At normal input voltage and full load.

*** Maximum with auto recovery function.

**** For 50% ~ 100% ~ 50% load change at any frequency up to 250Hz with 50% duty.

42D Series Plug-in Switch Mode Power Supply Unit

MECHANICAL

Dimensions	102.5(L) x 57.5(W) x 34.5(H)mm maximum.
Weight	280g maximum.
Input Plug Type	3-pin 3-conductors, <Active, Neutral, Earth>
Output Cord (5V)	Wire: SPT-1, VW-1, 18AWG, 800mm.
Output Cord (12V, 18V, 24V)	Wire: SPT-1, VW-1, 18AWG, 1828mm.
Output Plug	11(L) x 5.5(D) x 2.1(ID)mm

ENVIRONMENTAL

Cooling	Natural convection.
Operating Temperature	0°C to +40°C
Storage Temperature	-20°C to +60°C
Operating Humidity	20 ~ 85 % RH. Non-condensing
Storage Humidity	5 ~ 95 % RH. Non-condensing

SAFETY

Dielectric withstanding voltage test (Hi-pot test) input to output	1,800V AC, 10mA, 1 second OR 2,545V DC, 10mA, 1 second.
Dielectric withstanding voltage test (Hi-pot test) input to safety ground	1,500V AC, 10mA, 1 minute OR 1,800V AC, 10mA, 1 second.
Ground continuity test. Primary inlet F.G to secondary ground	25A for 3 seconds, 100mΩ maximum.
Insulation Resistance	> 100MΩ at 500V DC between Primary Active, Neutral line and secondary.
Leakage Current	0.5mA maximum at normal AC input voltage and frequency

RELIABILITY

Mean Time Between failure (MTBF)	The power supply is designed to have a MTBF of 50,000 operating hours at 90% confidence-level.
Burn-in Test	4 hours at 40°C +/- 5°C, normal input voltage, 80% of maximum load.

42D Series Plug-in Switch Mode Power Supply Unit

RATING PLATE

BY	DATE	DRAWING NO.
	08-09-2003	11

DEPARTMENT	SCALE	UNIT	TOLERANCE	PA
APP	1:1	mm	+0/-0.2	
	CKD.	SAFETY	MATERIAL	DRAW
1 OF 1				
4	6	7	8	9

2:1

REV	A	REF	A	12
NAME		PART NO.		

POWERMASTER®
 SWITCH MODE POWER SUPPLY
 MODEL: 42D05600P21
 INPUT: 90-264V AC 47-63Hz
 OUTPUT: +5V DC 6Amp

1:1

ELECTRICAL SAFETY
 IEC: 100071
 CENTRONE 003302 MADE IN CHINA

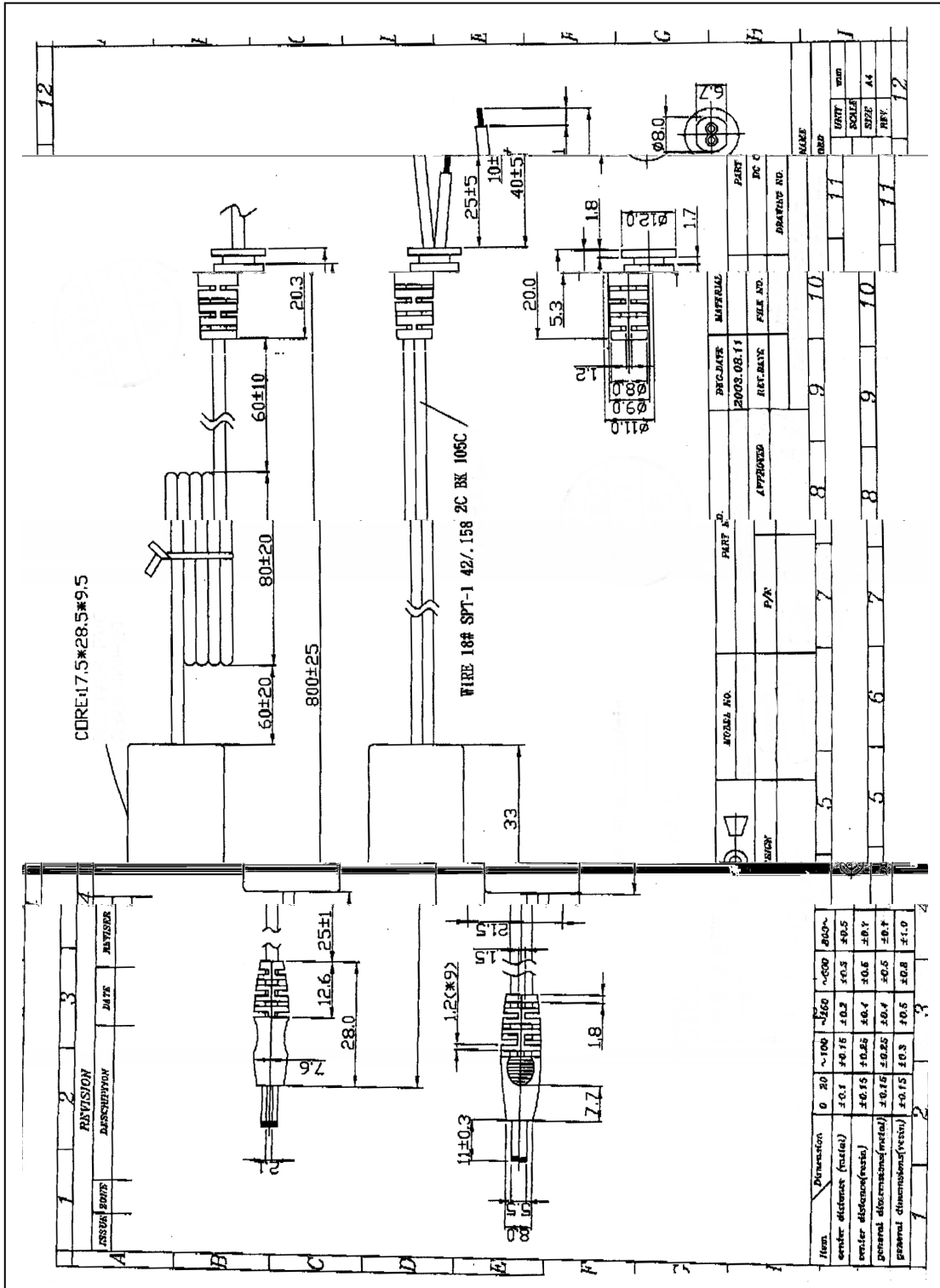
POWERMASTER®
 SWITCH MODE POWER SUPPLY
 MODEL: 42D05600P21
 INPUT: 90-264V AC 47-63Hz
 OUTPUT: +5V DC 6Amp

1:1

ELECTRICAL SAFETY
 IEC: 100071
 CENTRONE 003302 MADE IN CHINA

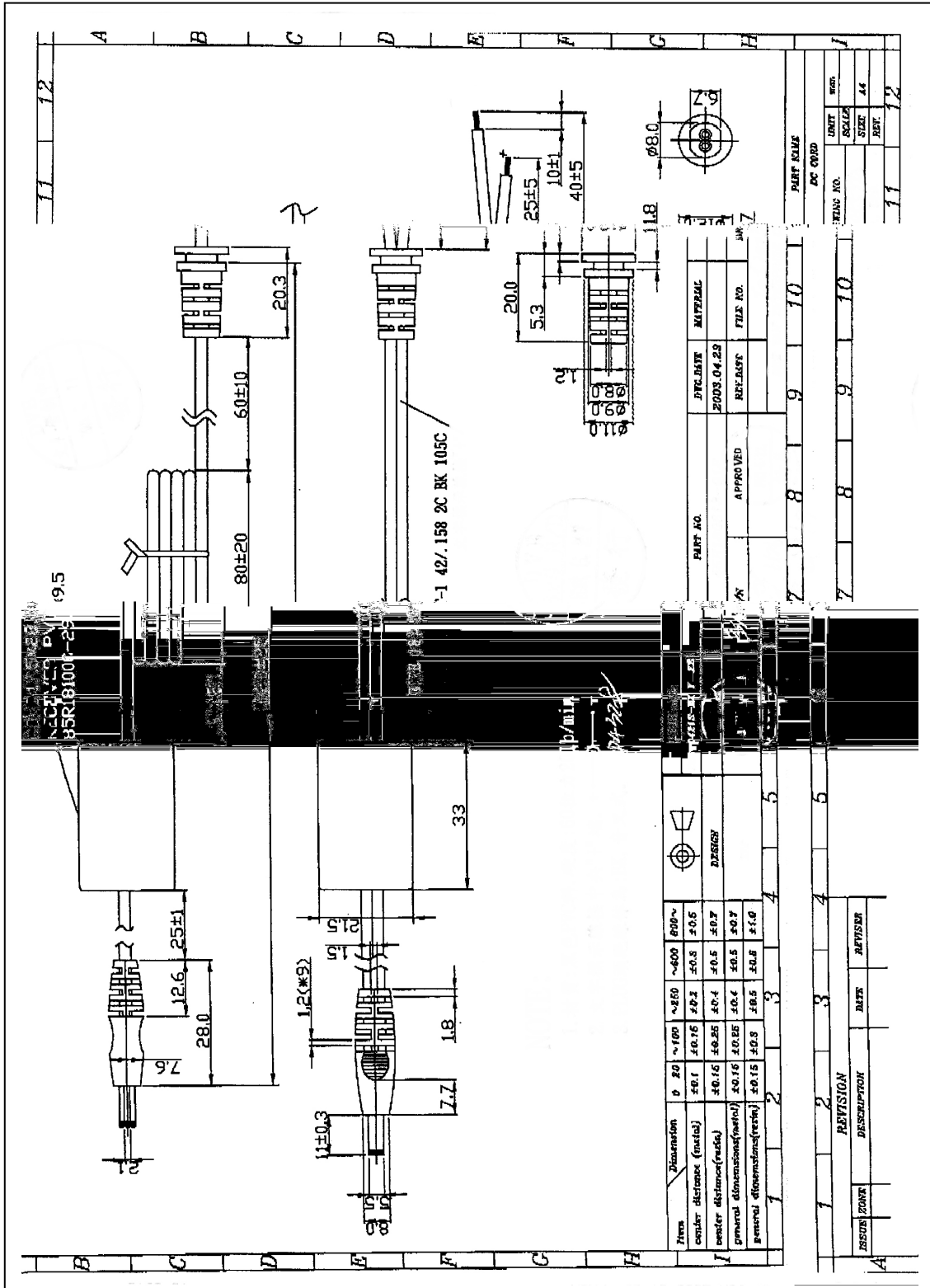
42D Series Plug-in Switch Mode Power Supply Unit

DC OUTPUT CORD DRAWING 5V MODEL



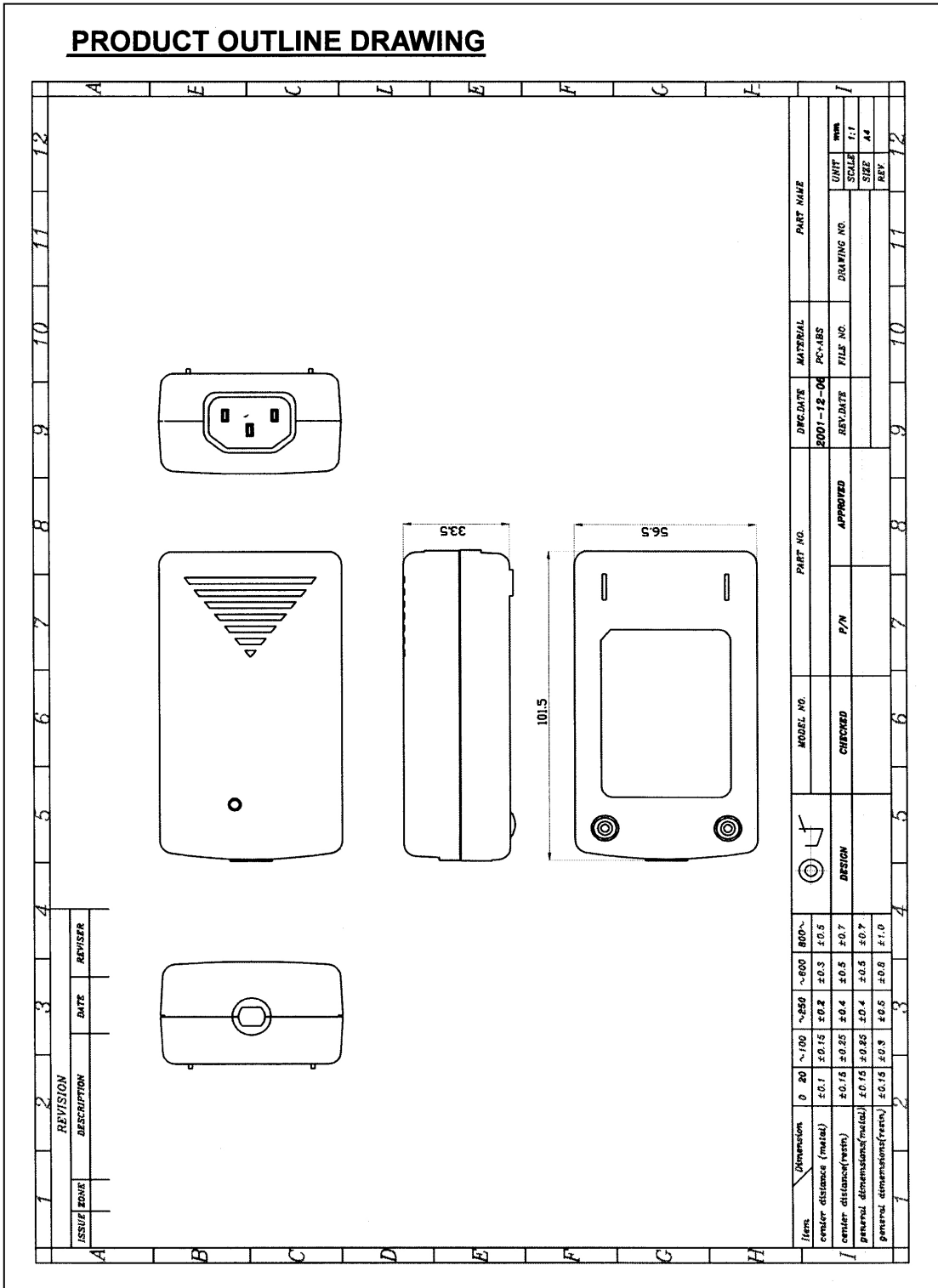
42D Series Plug-in Switch Mode Power Supply Unit

DC OUTPUT CORD DRAWING 12V, 18V & 24V MODELS



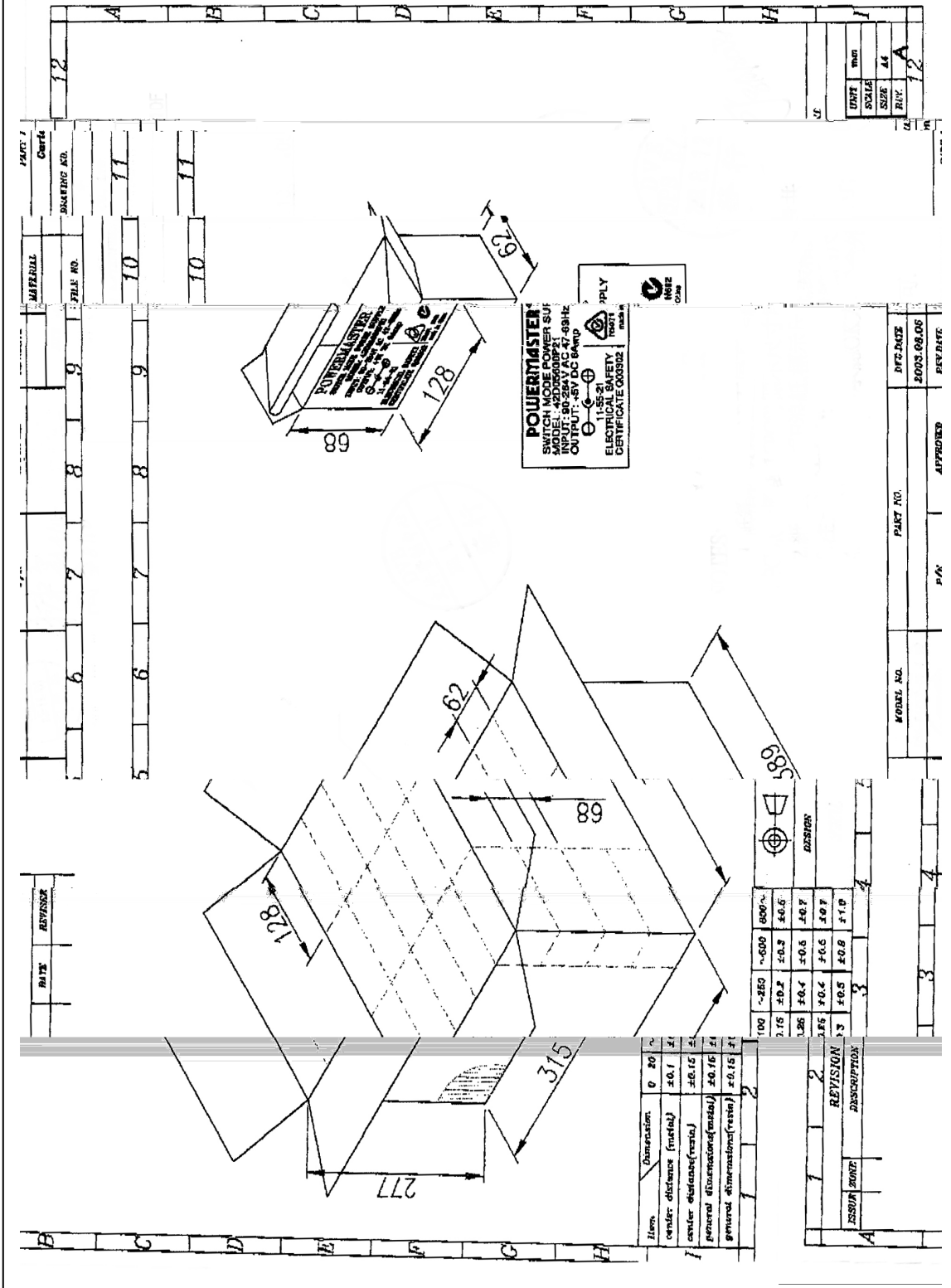
42D Series Plug-in Switch Mode Power Supply Unit

PRODUCT OUTLINE DRAWING



42D Series Plug-in Switch Mode Power Supply Unit

PACKING DRAWING



X-ON Electronics

Largest Supplier of Electrical and Electronic Components

Click to view similar products for [access communications manufacturer](#):

Other Similar products are found below :

[T1212-150](#) [Y9211](#) [K3754ORA](#) [K3744-015](#) [W2685RED](#) [W2652ASH](#) [W2682RED](#) [K3792](#) [K3743-050](#) [K3749](#) [K37557ORA](#) [K3759](#) [K3759-005](#) [P2163](#) [K3759-001](#) [K3791](#) [W2650BLU](#) [K3745](#) [K3762](#) [P2210](#) [K3781](#) [K3748ORA](#) [K3750](#) [P2124](#)