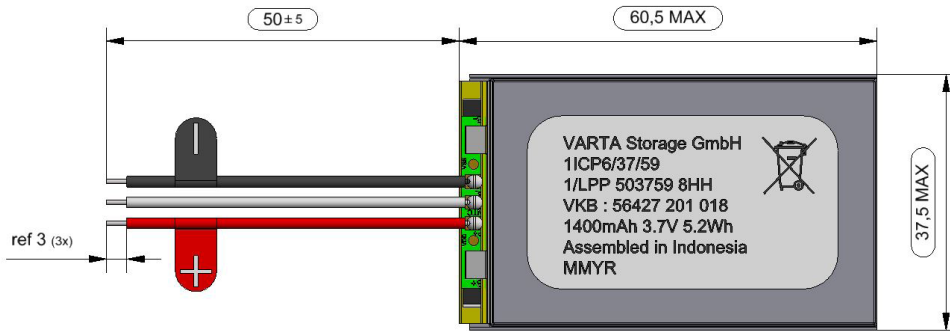


Product Information



1/LPP 503759 8HH PCM W
 ▶ VKB 56427 201 018



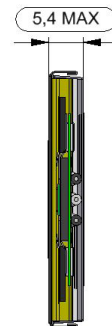
VARTA Storage GmbH
 1ICP6/37/59
 1/LPP 503759 8HH
 VKB : 56427 201 018
 1400mAh 3.7V 5.2Wh
 Assembled in Indonesia
 MMYR

MM ▶ month two digits
 Y ▶ year one digit
 R ▶ week one digit

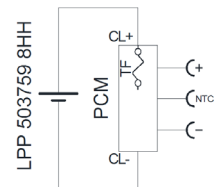
1. GENERAL

Battery Pack in shrink sleeve incl. safety circuit & wires

- Cell ▶ LPP 503759 8HH
- PCM ▶ Yes
- NTC ▶ 10kΩ ± 1%; B-value 3380
- ID ▶ None
- Configuration ▶ 1S
- Weight ▶ appr. 25g



Circuit Diagram



2. ELECTRICAL SPECIFICATION

- Rated Capacity ▶ 1320mAh min., 1400mAh typical
- Nominal Voltage ▶ 3.7V
- Watt-Hour Rating ▶ 5.2Wh
- Charging Method ▶ Constant Current + Constant Voltage
- Max. Charge Voltage: ▶ 4.2V (±50mV)
- Max. Continuous Charge Current: ▶ 1980mA (limited by cell DS)
- Rec. Charge Cut Off: ▶ 50mA or timer 2.5h
- Max. Continuous Discharge Current: ▶ 2000mA (limited by PCM)
- Rec. Discharge Cut Off: ▶ 3V
- Internal Impedance: ▶ approx. 100mΩ
- Exp. Cycle Life @ (1C/0.5C) @ 23 ±2°C ▶ 500 cycles ≥ 1098mAh

CELL PROTECTION

- Overcharge Detection ▶ 4.275V ± 25mV (0.7 to 1.3sec. delay, resume 4.275V ± 25mV)
- Overdischarge Detection: ▶ 2.3V ± 58mV (14 to 26msec. delay, resume 2.3V ± 58mV)
- Overcurrent Detection ▶ 2A to 4.5A (8 to 16msec. delay @ discharge)

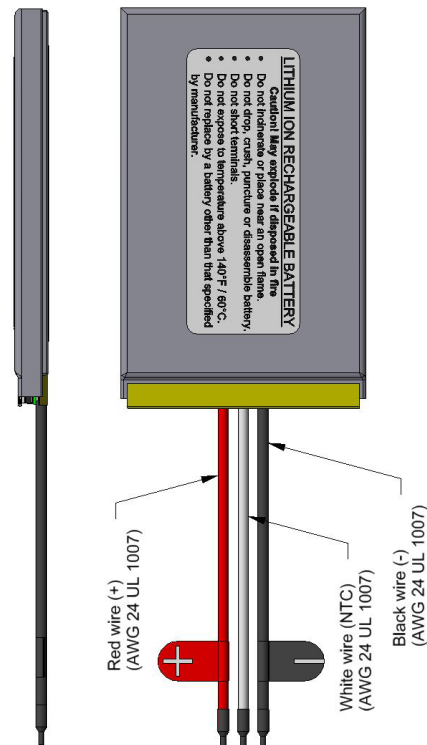
3. AMBIENT CONDITIONS

- Temperature Range
 - Charge ▶ 0 to +45°C
 - Discharge ▶ -20 to +60°C
- Storage Capacity Recovery Rate ▶ 1 month at -10 to +45°C > 85%
- Humidity ▶ 65 ± 20%RH

4. ENVIRONMENTAL AND SAFETY

Please follow VARTA Handling and Safety Precautions for Lilon & LiPolymer.
 The cell used is a UL recognized component according to UL1642.
 This battery meets the requirements of Battery Directives and the battery parts are RoHS-Compliant.
 The battery is certified according to IEC 62133 edition 2 and UN 38.3.

Minimum Order Quantity: 600 pcs / Order Multiples: 120 pcs - Product for OEM customers only!



X-ON Electronics

Largest Supplier of Electrical and Electronic Components

Click to view similar products for [varta](#) manufacturer:

Other Similar products are found below :

[56456 702 099](#) [18750](#) [4114 210 501](#) [4610 726 406](#) [4122 210 511](#) [LCD-CHARGER + 4XAA 2400MAH](#) [449915B](#) [4607 726 406](#)
[55171403014](#) [55625603059](#) [55615602940](#) [4112101411](#) [4 022 211 111](#) [4 106 101 436](#) [4 020 211 111](#) [MINI CHARGER + 2XAA 2100MAH](#)
[MINI-CHARGER](#) [17730](#) [LCD-SMART-CHARGER](#) [414086X](#) [POCKET-CHARGER + 4XAA 2100MAH](#) [458980A](#) [LCD MULTI](#)
[CHARGER](#) [CG511-150-PB](#) [EE UNIVERSAL CHARGER](#) [CG401D-050-PB](#) [CG511-050-PB](#) [CU303-018-PB](#) [413675G](#) [CG381D-G-100-PB](#)
[CU202-030-PB](#) [55615603059](#) [CG381D-G-150-PB](#) [CG481G-050-PB](#) [CU303-030-PB](#) [CG511D-030-PB](#) [CA317-PB](#) [CU201G-B-030-PB](#)
[095668F](#) [4600 726 406](#) [CA418-PB](#) [CG481G-030-PB](#) [CG511D-100-PB](#) [CG511-030-PB](#) [CG511D-150-PB](#) [CG381D-G-050-PB](#) [CU302-030-](#)
[PB](#) [CG341-030-PB](#) [CU201G-B-050-PB](#) [CA089-PB](#)