



## aluCASE

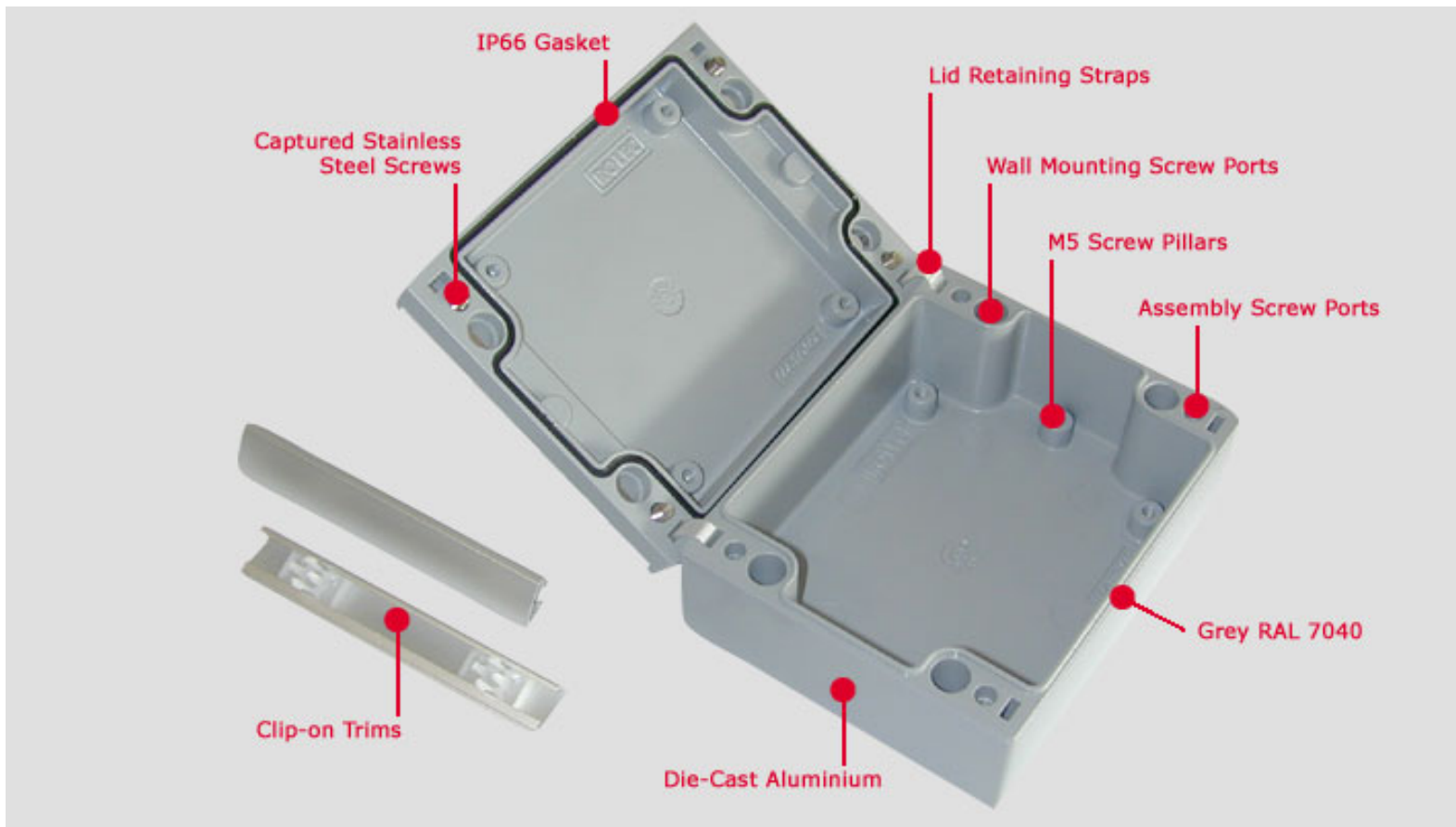


### THE NEW ENCLOSURES CONCEPT!

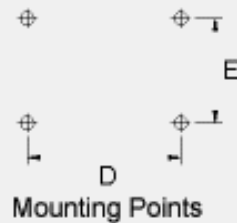
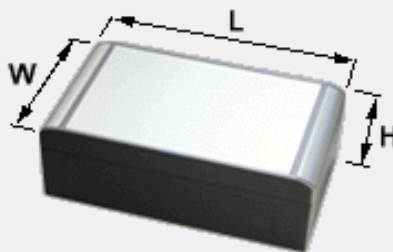
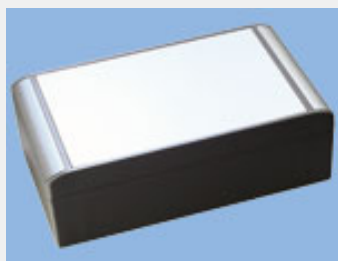
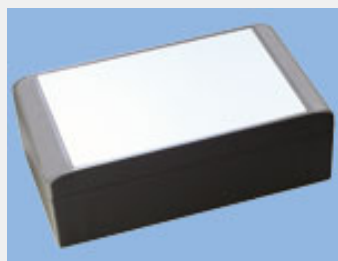
**aluCASE** is our latest range of IP67 die-cast enclosures. Our design team have incorporated many new and unique features in order to create a much more modern and ergonomic series of off-the-shelf enclosures. Just take a look at these new features:



- 1** Recessed lid for membrane keypads or control panels - *No need to crop around the screws*
- 2** Screw ports for wall mounting even when the unit is assembled - *No need for wall brackets*
- 3** Clip-on trims hide the case and wall fixings - *Enclosures with visible screws now look very dated*
- 4** When open, the lid is retained by two straps (included) - *No need for separate accessories*
- 5** Modern integrated hinge design with no visible fixings - *Ugly hinges now obsolete*
- 6** Optional keylock incorporated in the hinge assembly - *Better design than traditional keylocks*
- 7** Also available from our [Distributors](#)



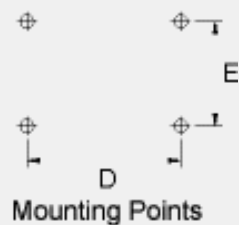
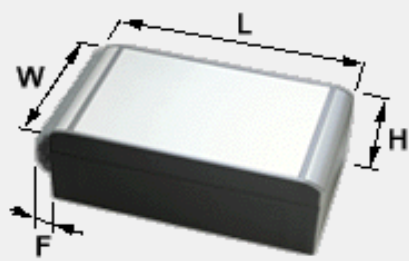
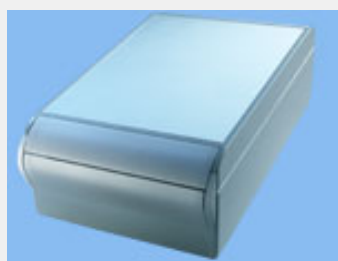
## aluCASE ENCLOSURES



Part No. With Plastic Trims Grey RAL 7040 (click for price!)	Part No. With Anodised Aluminium Trims (click for price!)	Type	W	L	H	D	E	Weight	Drawings PDF or DWG Formats
<a href="#">191.090.000</a>	<a href="#">191.090.100</a>	AC 090	90	120	60	102	40	580g	<a href="#">PDF</a> <a href="#">DWG</a>
<a href="#">191.092.000</a>	<a href="#">191.092.100</a>	AC 092	90	160	60	142	40	680g	<a href="#">PDF</a> <a href="#">DWG</a>
<a href="#">190.110.000</a>	<a href="#">190.110.100</a>	ACF 110	110	140	60	122	60	700g	<a href="#">PDF</a> <a href="#">DWG</a>
<a href="#">190.112.000</a>	<a href="#">190.112.100</a>	ACF 112	110	200	60	182	60	880g	<a href="#">PDF</a> <a href="#">DWG</a>
<a href="#">190.130.000</a>	<a href="#">190.130.100</a>	ACF 130	130	160	70	142	80	910g	<a href="#">PDF</a> <a href="#">DWG</a>
<a href="#">190.132.000</a>	<a href="#">190.132.100</a>	ACF 132	130	220	70	202	80	1,130g	<a href="#">PDF</a> <a href="#">DWG</a>
<a href="#">190.150.000</a>	<a href="#">190.150.100</a>	ACF 150	150	180	60	162	100	968g	<a href="#">PDF</a> <a href="#">DWG</a>

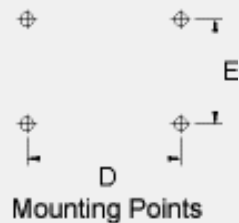
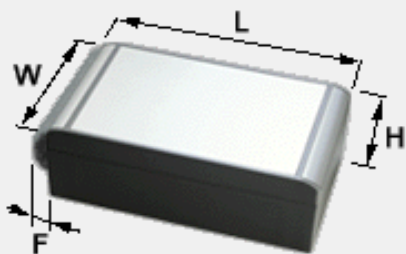
<a href="#">191.150.000</a>	<a href="#">191.150.100</a>	AC 150	150	180	90	162	100	1,216g	<a href="#">PDF</a> <a href="#">DWG</a>
<a href="#">190.152.000</a>	<a href="#">190.152.100</a>	ACF 152	150	260	60	242	100	1,273g	<a href="#">PDF</a> <a href="#">DWG</a>
<a href="#">191.152.000</a>	<a href="#">191.152.100</a>	AC 152	150	260	90	242	100	1,569g	<a href="#">PDF</a> <a href="#">DWG</a>
<a href="#">190.170.000</a>	<a href="#">190.170.100</a>	ACF 170	170	200	60	182	120	1,096g	<a href="#">PDF</a> <a href="#">DWG</a>
<a href="#">191.170.000</a>	<a href="#">191.170.100</a>	AC 170	170	200	90	182	120	1,430g	<a href="#">PDF</a> <a href="#">DWG</a>
<a href="#">190.172.000</a>	<a href="#">190.172.100</a>	ACF 172	170	280	60	262	120	1,471g	<a href="#">PDF</a> <a href="#">DWG</a>
<a href="#">191.172.000</a>	<a href="#">191.172.100</a>	AC 172	170	280	90	262	120	1,789g	<a href="#">PDF</a> <a href="#">DWG</a>

## aluCASE ENCLOSURES With Hinge



Part No. (click for price!)	Type	W	L	H	D	E	F	Weight	Drawing PDF or DWG formats
<a href="#">190.110.111</a>	ACF 110 S	110	140	60	122	60	9.5	700g	<a href="#">PDF</a> <a href="#">DWG</a>
<a href="#">190.112.111</a>	ACF 112 S	110	200	60	182	60	9.5	880g	<a href="#">PDF</a> <a href="#">DWG</a>
<a href="#">190.130.111</a>	ACF 130 S	130	160	70	142	80	9.5	910g	<a href="#">PDF</a> <a href="#">DWG</a>
<a href="#">190.132.111</a>	ACF 132 S	130	220	70	202	80	9.5	1,130g	<a href="#">PDF</a> <a href="#">DWG</a>
<a href="#">190.150.111</a>	ACF 150 S	150	180	60	162	100	9.5	968g	<a href="#">PDF</a> <a href="#">DWG</a>
<a href="#">191.150.111</a>	AC 150 S	150	180	90	162	100	9.5	1,216g	<a href="#">PDF</a> <a href="#">DWG</a>
<a href="#">190.152.111</a>	ACF 152 S	150	260	60	242	100	9.5	1,273g	<a href="#">PDF</a> <a href="#">DWG</a>
<a href="#">191.152.111</a>	AC 152 S	150	260	90	242	100	9.5	1,569g	<a href="#">PDF</a> <a href="#">DWG</a>
<a href="#">190.170.111</a>	ACF 170 S	170	200	60	182	120	9.5	1,096g	<a href="#">PDF</a> <a href="#">DWG</a>
<a href="#">191.170.111</a>	AC 170 S	170	200	90	182	120	9.5	1,430g	<a href="#">PDF</a> <a href="#">DWG</a>
<a href="#">190.172.111</a>	ACF 172 S	170	280	60	262	120	9.5	1,471g	<a href="#">PDF</a> <a href="#">DWG</a>
<a href="#">191.172.111</a>	AC 172 S	170	280	90	262	120	9.5	1,789g	<a href="#">PDF</a> <a href="#">DWG</a>

## aluCASE ENCLOSURES With Hinge & Integrated Keylock



Part No. (click for price!)	Type	W	L	H	D	E	F	Weight	Drawing PDF or DWG formats
<a href="#">190.110.115</a>	ACF 110 ST	110	140	60	122	60	9.5	700g	<a href="#">PDF</a> <a href="#">DWG</a>
<a href="#">190.112.115</a>	ACF 112 ST	110	200	60	182	60	9.5	880g	<a href="#">PDF</a> <a href="#">DWG</a>
<a href="#">190.130.115</a>	ACF 130 ST	130	160	70	142	80	9.5	910g	<a href="#">PDF</a> <a href="#">DWG</a>
<a href="#">190.132.115</a>	ACF 132 ST	130	220	70	202	80	9.5	1,130g	<a href="#">PDF</a> <a href="#">DWG</a>
<a href="#">190.150.115</a>	ACF 150 ST	150	180	60	162	100	9.5	968g	<a href="#">PDF</a> <a href="#">DWG</a>
<a href="#">191.150.115</a>	AC 150 ST	150	180	90	162	100	9.5	1,216g	<a href="#">PDF</a> <a href="#">DWG</a>
<a href="#">190.152.115</a>	ACF 152 ST	150	260	60	242	100	9.5	1,273g	<a href="#">PDF</a> <a href="#">DWG</a>
<a href="#">191.152.115</a>	AC 152 ST	150	260	90	242	100	9.5	1,569g	<a href="#">PDF</a> <a href="#">DWG</a>
<a href="#">190.170.115</a>	ACF 170 ST	170	200	60	182	120	9.5	1,096g	<a href="#">PDF</a> <a href="#">DWG</a>
<a href="#">191.170.115</a>	AC 170 ST	170	200	90	182	120	9.5	1,430g	<a href="#">PDF</a> <a href="#">DWG</a>
<a href="#">190.172.115</a>	ACF 172 ST	170	280	60	262	120	9.5	1,471g	<a href="#">PDF</a> <a href="#">DWG</a>
<a href="#">191.172.115</a>	AC 172 ST	170	280	90	262	120	9.5	1,789g	<a href="#">PDF</a> <a href="#">DWG</a>

## TECHNICAL DATA & OPTIONS

<p><b>Enclosure</b></p>		<p>Die-cast aluminium: EN AC-44300 DIN EN 1706 (GD AL Si 12 / DIN 1725)</p>
<p><b>Lid screws</b></p>		<p>Captive screws in stainless steel 1.4567</p>
<p><b>Lid support straps</b></p>		<p>PP (polypropylene)</p>

<p><b>Clip-on Trims</b></p>		<p>Plastic version - POM (polyoxymethylene) Grey RAL 7040 Aluminium version - Anodised</p>
<p><b>Enclosure temperature range</b></p>		<p>As per gasket type fitted.</p>
<p><b>Ingress Protection</b></p>		<p>IP 67 / DIN EN 60529:2000</p>
<p><b>IP 66 Gasket (Standard)</b></p>		<p>Forprene gasket (siliconfree) (-40°C to +150°C).</p>
<p><b>EMC Gasket (On request)</b></p>		<p><b>Option 'EMV'*</b> - EMC gasket fitted into the enclosure lid. Maintains IP 66 protection. (-30°C to +100°C). * - On request at extra cost.</p>
<p><b>Internal mounting</b></p>		<p>M5 threaded pillars in the lid and the base for mounting your assemblies.</p>
<p><b>Condensation Glands - IP 67 (on request)</b></p>		<p>Gortex condensation glands can be fitted to the cases on request. These are especially useful when there is a large variance in the operating temperature over a short period, which can result in condensation on the inside of the enclosure. These glands ventilate the case while maintaining IP67 protection.</p>
<p><b>Finish / colour</b></p>		<p><b>Standard</b> - Window grey RAL 7040 <b>Option 'K'</b> - Chromatizing before painting* <b>Option 'L'</b> - Corrosion proof coating RAL 5009* <b>Other options</b>- stove-finished structured paint, special colours * * - at extra cost.</p>
<p><b>Modifications</b></p>		<p>We can supply the enclosures ready for your assemblies by drilling, milling, engraving, painting, silk-screen printing, adding inserts and much more. Just ask us for a quotation. <a href="#">More about customising...</a></p>

[Request a catalogue](#)

[return to enclosures index](#)

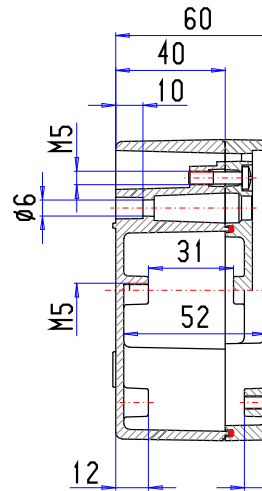
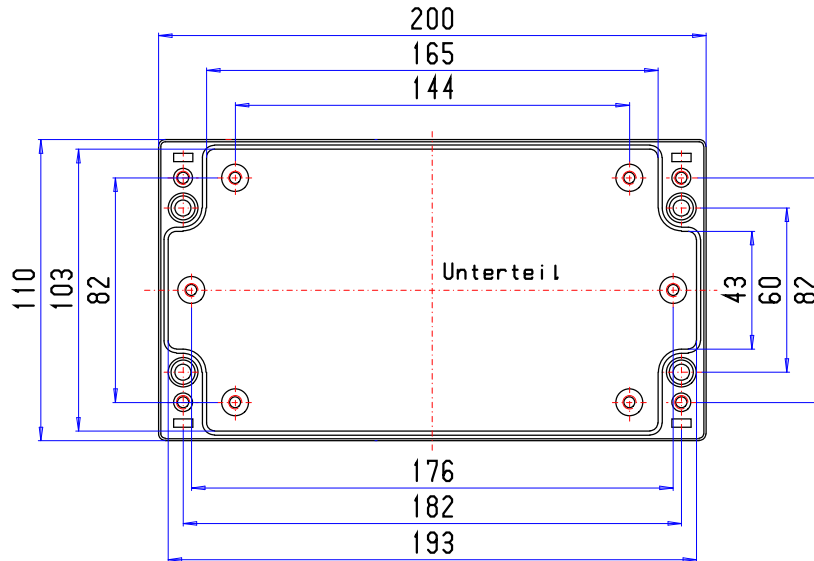
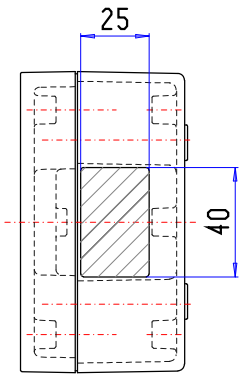
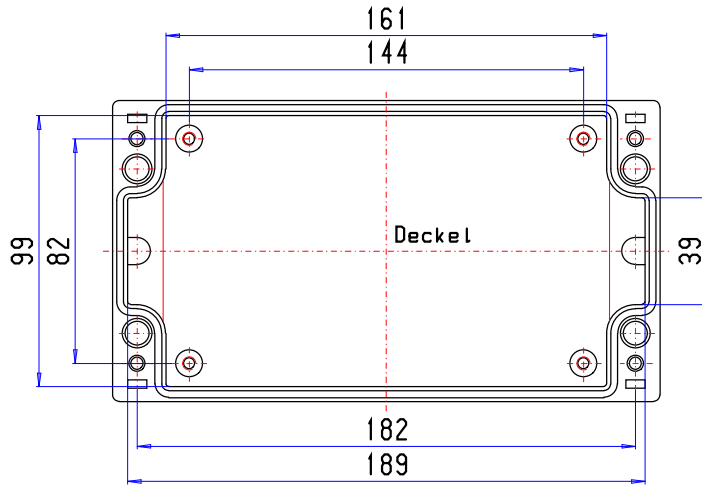
[Request a sample](#)

[Home](#) [About Us](#) [Enclosures](#) [Technical](#) [Service Desk](#) [News](#) [Contact](#)

**CALL (01489) 583858**

Legal notice: copyright © 2000-2005 OKW Enclosures Ltd, UK. All rights reserved. Rev: 2005.09.27  
Rolec ® is the registered trademark of Rolec Gehäuse-Systeme GmbH, Germany.

aluCASE 112 flach



## **X-ON Electronics**

Largest Supplier of Electrical and Electronic Components

*Click to view similar products for [rolec](#) manufacturer:*

Other Similar products are found below :

[230.172.000](#) [190.112.000](#) [191.172.000](#)