

T-1R7-02-G



**T, S SERIES**

# MACHINED TERMINALS & SOCKETS

Mates with:  
SC, SK, SP

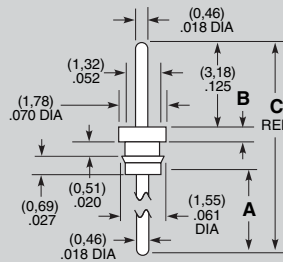
**Specifications:  
T, S**

All T and S Series are available with a choice of Gold or Tin plating. Add -G or -T as a suffix to the part number shown.

- G Plating:**  
Au over 50µ" (1,27 µm) Ni
- T Plating:**  
Sn over 50µ" (1,27 µm) Ni or 100µ" (2,54 µm) Cu
- Current Rating:**  
1A per contact;  
except T-1S6 is 5A per contact

| RECOMMENDED<br>PC HOLE SIZE: |                 |
|------------------------------|-----------------|
| LEAD SIZE                    | HOLE SIZE       |
| (0,46) .018 DIA              | (0,61) .024 DIA |
| (0,51) .020 DIA              | (0,66) .026 DIA |
| (0,64) .025 DIA              | (0,79) .031 DIA |
| (0,76) .030 DIA              | (0,91) .036 DIA |
| (0,89) .035 DIA              | (1,04) .041 DIA |
| (1,14) .045 DIA              | (1,30) .051 DIA |
| (1,32) .052 DIA              | (1,47) .058 DIA |
| (0,46) .018 SQ               | (0,76) .030 DIA |
| (0,64) .025 SQ               | (1,02) .040 DIA |
| (1,14) .045 SQ               | (1,75) .069 DIA |
| (0,20) .008 x (0,71) .028    | (0,89) .035 DIA |
| (0,25) .010 x (0,51) .020    | (0,71) .028 DIA |
| (0,41) .016 x (0,51) .020    | (0,79) .031 DIA |
| (0,41) .016 x (0,61) .024    | (0,89) .035 DIA |
| (0,41) .016 x (0,79) .031    | (1,04) .041 DIA |

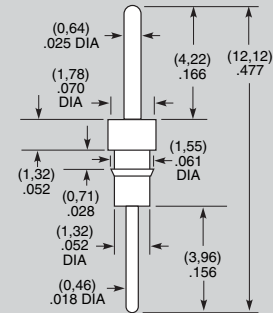
**T-1R6-**



| Part No. | A<br>TAIL      | B<br>HEAD      | C<br>OAL       |
|----------|----------------|----------------|----------------|
| T-1R6-   | (2,74)<br>.108 | (0,51)<br>.020 | (7,62)<br>.300 |

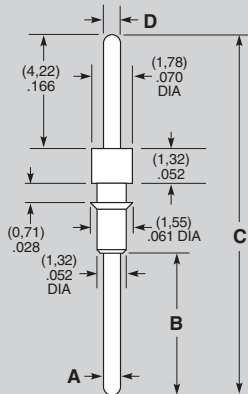
Material: Brass  
-G = 20µ" (0,51 µm) Gold  
-T = 200µ" (5,08 µm) Tin

**T-1R0-**



Material: Brass  
-G = 20µ" (0,51 µm) Gold  
-T = 200µ" (5,08 µm) Tin

**T-1R7-**



| Part No. | A<br>DIA       | B<br>TAIL      | C<br>OAL        | D<br>DIA |
|----------|----------------|----------------|-----------------|----------|
| T-1R7-01 | (0,64)<br>.025 | (5,33)<br>.210 | (13,46)<br>.530 | (0,64)   |
| T-1R7-02 | (0,89)<br>.035 |                |                 | .025     |

Material: Brass  
-G = 10µ" (0,25 µm) Gold  
-T = 200µ" (5,08 µm) Tin

**Note:**  
Some sizes, styles and options are non-standard, non-returnable.

Due to technical progress, all designs, specifications and components are subject to change without notice.

**WWW.SAMTEC.COM**



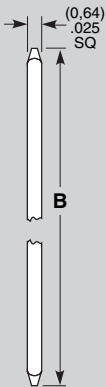
S-1P1-G

T-1R0-G

T, S SERIES

# MACHINED TERMINALS & SOCKETS

## T-1S6-



| PART NO.     | B             |
|--------------|---------------|
| T-1S6-07-X-2 | (10,92) .430  |
| T-1S6-08-X-2 | (13,46) .530  |
| T-1S6-09-X-2 | (18,54) .730  |
| T-1S6-10-X-2 | (21,08) .830  |
| T-1S6-11-X-2 | (23,62) .930  |
| T-1S6-12-X-2 | (26,16) 1.030 |
| T-1S6-13-X-2 | (31,24) 1.230 |
| T-1S6-14-X-2 | (36,32) 1.430 |
| T-1S6-15-X-2 | (16,00) .630  |
| T-1S6-16-X-2 | (11,30) .445  |
| T-1S6-17-X-2 | (12,19) .480  |
| T-1S6-18-X-2 | (7,62) .300   |
| T-1S6-19-X-2 | (33,78) 1.330 |
| T-1S6-20-X-2 | (28,70) 1.130 |
| T-1S6-21-X-2 | (8,51) .335   |

Pins are supplied on a bandolier.

Material: Phosphor Bronze

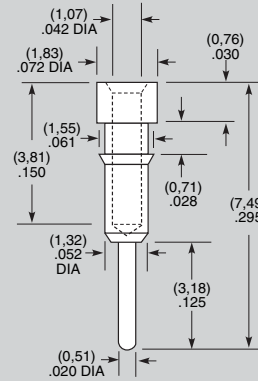
X = Plating option (specify G or T)

-G = 10µm (0,25 µm) Gold on .165" (4,19 mm)

contact area. Gold flash on balance

-T = 200µm (5,08 µm) Tin

## S-1P1-

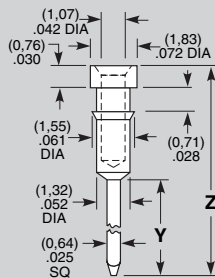


Material: Brass

-G = 10µm (0,25 µm) Gold

-T = 200µm (5,08 µm) Tin

## S-1W1-



| Part No. | Y<br>±.010      | Z<br>±.015      |
|----------|-----------------|-----------------|
| S-1W1-1- | (12,95)<br>.510 | (17,86)<br>.703 |
| S-1W1-2- | (9,14)<br>.360  | (14,05)<br>.553 |
| S-1W1-3- | (6,60)<br>.260  | (11,51)<br>.453 |

Material: Brass

-G = 10µm (0,25 µm) Gold

-T = 200µm (5,08 µm) Tin

Due to technical progress, all designs, specifications and components are subject to change without notice.

[WWW.SAMTEC.COM](http://WWW.SAMTEC.COM)

## X-ON Electronics

Largest Supplier of Electrical and Electronic Components

*Click to view similar products for [samtec](#) manufacturer:*

Other Similar products are found below :

[MTMM-105-09-H-D-390](#) [YTW-20-07-H-6-520-110](#) [TW-10-08-H-D-616-107](#) [TW-15-08-H-D-600-080](#) [TW-30-08-H-D-616-107](#) [MTMM-108-05-H-D-220](#) [MTMM-120-06-H-D-180](#) [MTMM-103-05-H-D-220](#) [SSM-105-H-DV-A-P-TR](#) [ERCD-060-19.00-TEU-TBL-1-3](#) [SSQ-108-01-SM-S](#) [SSQ-105-01-SM-S](#) [ACD-185680-02](#) [ESQT-112-02-F-D-375](#) [ESQT-135-03-F-D-380](#) [FTSH-111-01-L-DV](#) [QTE-060-01-L-D-A](#) [MSAS-179-ZUGG-18](#) [MTMM-103-05-H-D-300](#) [MTMM-142-05-H-D-126](#) [MTSW-103-07-F-S-240](#) [MTSW-125-24-H-D-285](#) [ERF8-020-05.0-S-DV-K-TR](#) [IDMD-10-T-12.00-A-G-R](#) [IPL1-112-01-L-D-K](#) [IPL1-116-01-H-D](#) [SFM-107-02-S-D-LC](#) [SFML-115-01-S-D](#) [SFML-125-01-S-D](#) [SFSDT-15-28-H-04.50-DR-NDS](#) [LSHM-120-02.5-L-DV-A-N-K-TR](#) [SMS-125-02-S-D](#) [ESQ-110-14-G-D](#) [ESQT-125-03-F-D-310](#) [ESQT-133-03-F-D-350](#) [SO-0515-01-01-02](#) [SQW-120-01-F-D-VS-A](#) [SSW-110-02-H-D](#) [FJH-50-D-12.00-4](#) [CES-150-01-T-D](#) [QFS-052-01-SL-D-RA](#) [QTE-040-04-L-D-A](#) [QTH-020-04-F-D-DP-A-K-TR](#) [QTH-060-01-F-D-A](#) [QTH-090-04-L-D-A](#) [TFM-110-02-S-D](#) [TFM-115-02-L-DH](#) [TFM-120-12-S-D-LC](#) [TFML-140-02-S-D](#) [TLW-107-05-G-D](#)