

The standard model for lead-free soldering

**HAKKO FX-951** ESD SAFE  
SOLDERING STATION

The standard model for lead-free soldering upgraded



Optional Tips

Unit : mm

T12-B SHAPE-B	T12-B2 SHAPE-0.5B	T12-B3 SHAPE-0.7B	T12-B4 SHAPE-0.4B	T12-BL SHAPE-BL	T12-BC1 SHAPE-1BC T12-BCF1 *
T12-BC2 SHAPE-2BC T12-BCF2 *	T12-BC3 SHAPE-3BC T12-BCF3 *	T12-C1 SHAPE-1C	T12-C4 SHAPE-4C T12-CF4 *	T12-D08 SHAPE-0.8D	T12-D12 SHAPE-1.2D
T12-D16 SHAPE-1.6D	T12-D24 SHAPE-2.4D	T12-D4 SHAPE-4D	T12-D52 SHAPE-5.2D	T12-DL08 SHAPE-0.8DL	T12-DL12 SHAPE-1.2DL
T12-DL32 SHAPE-3.2DL	T12-DL52 SHAPE-5.2DL	T12-I1 SHAPE-I	T12-IL SHAPE-IL	T12-ILS SHAPE-ILS	T12-J02 SHAPE-0.2J
T12-JL02 SHAPE-0.2JL	T12-JS02 SHAPE-0.2JS	T12-K SHAPE-K	T12-KF SHAPE-KF	T12-KL SHAPE-KL	T12-KR SHAPE-KR
T12-KU SHAPE-KU	T12-1201 QUAD 13.6 x 8.5	T12-1202 QUAD 10.3 x 10.3	T12-1203 QUAD 12.8 x 12.8	T12-1204 QUAD 17.9 x 17.9	T12-1205 QUAD 23.4 x 17.3
T12-1206 QUAD 22.5 x 16.5	T12-1207 QUAD 15.5 x 15.5	T12-1208 QUAD 15.8 x 15.8	T12-1209 QUAD 8.4 x 8.4	T12-1001 TUNNEL 5.1 x 4.6	T12-1002 TUNNEL 5.1 x 10.4
T12-1003 TUNNEL 9.5 x 18.3	T12-1004 TUNNEL 9.5 x 15.8	T12-1005 TUNNEL 9.5 x 13.2	T12-1006 TUNNEL 6.9 x 11.4	T12-1007 TUNNEL 7.9 x 18.8	T12-1008 TUNNEL 19.5 x 10.2
T12-1009 TUNNEL 13.4 x 20.5	T12-1010 TUNNEL 19.5 x 12	T12-1401 SPATULA 10.4	T12-1402 SPATULA 15.7	T12-1403 SPATULA 21.2	T12-1404 SPATULA 25
T12-1405 SPATULA 32	T12-1406 SPATULA 40	T12-BZ SHAPE-B(Z)	T12-B2Z SHAPE-0.5B(Z)	T12-BC1Z SHAPE-1BC(Z) T12-BCF1Z *	T12-BC2Z SHAPE-2BC(Z) T12-BCF2Z *
T12-BCM2 SHAPE-2BC Bevel with indent **	T12-BC3Z SHAPE-3BC(Z) T12-BCF3Z *	T12-BCM3 SHAPE-3BC Bevel with indent **	T12-C4Z SHAPE-4C(Z) T12-CF4Z *	T12-D12Z SHAPE-1.2D(Z)	T12-D16Z SHAPE-1.6D(Z)
T12-D24Z SHAPE-2.4D(Z)	T12-D4Z SHAPE-4D(Z)	T12-KFZ SHAPE-KF(Z)	T12-KRZ SHAPE-KR(Z)	T12-WB2 SHAPE-0.5WB	T12-WD08 SHAPE-0.8WD
T12-WD12 SHAPE-1.2WD	T12-WD16 SHAPE-1.6WD	T12-WD52 SHAPE-5.2WD	T12-W1 SHAPE-W1		

SHAPE B

SHAPE J

SMD TYPE(SPATULA)

SHAPE BC

SHAPE K

SPECIAL APPLICATIONS TYPE

SHAPE C

SMD TYPE(QUAD)

SHAPE D

SMD TYPE(TUNNEL)

SHAPE I

HEAVY DUTY TYPE

\* Tinned on the soldering surface only. \*\* The part numbers T12-BCM2 and T12-BCM3 are not available for sale or use in the U.S.A.

Due to continuing product improvement efforts, specifications and external appearance are subject to change without notice.  
Copyright Hakko Corporation. All right reserved.

CA00252BbBa001 Oct. 2006

**HAKKO**  
HAKKO CORPORATION  
OVERSEAS AFFILIATES

**HEAD OFFICE**  
4-5, SHIOKUSA 2-CHOME, NANIWA-KU, OSAKA, 556-0024 JAPAN  
TEL: +81-6-6561-3225 FAX: +81-6-6561-8466  
http://www.hakko.com E-mail: sales@hakko.com

**U.S.A.**  
AMERICAN HAKKO PRODUCTS, INC.  
28920 N. AVE. WILLIAMS VALENCIA, CA 91355, U.S.A.  
TEL: (661) 294-0090 FAX: (661) 294-0096  
Toll Free (800)88-HAKKO  
http://www.hakkousa.com

**HONG KONG**  
HAKKO DEVELOPMENT CO., LTD.  
ROOM 1504, EASTERN HARBOUR CENTRE,  
28 HOI CHAK STREET, QUARRY BAY, HONG KONG.  
TEL: 2811-5588 FAX: 2590-0217  
http://www.hakko.com.hk  
E-mail: info@hakko.com.hk

**SINGAPORE**  
HAKKO PRODUCTS PTE., LTD.  
1, GENTING LINK #02-04, PERFECT INDUSTRIAL  
BUILDING, SINGAPORE 349518  
TEL: 6748-2277 FAX: 6744-0033  
http://www.hakko.com.sg  
E-mail: sales@hakko.com.sg

Please access to the following for the other Sales affiliates.  
http://www.hakko.com

**HAKKO**

# HAKKO's advanced lead-free soldering model added safe function and upgrading performance.



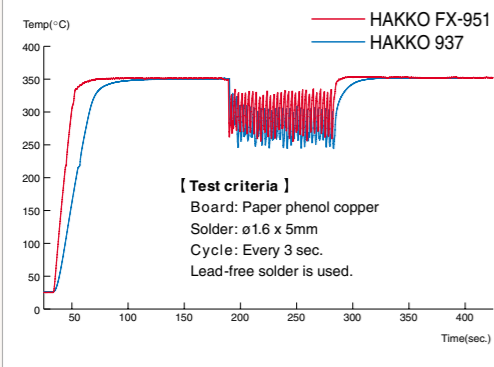
## Basic functions

### Excellent thermal control

Shows great thermal recovery and thermal accuracy

The composite tip combining heating element and sensor allows great thermal recovery and thermal accuracy.

#### Thermal recovery graph



### User-friendly design

Space-saving vertical design allows more space on the work bench.

The neat and compact design conforms to the work space more easily. Dimensions: 80(W) x 130 (H) x 131 (D) mm

User-friendly iron holder

The angle can be adjusted to suit the individual working style.

The unit can be used with HAKKO 599B instead of a cleaning sponge.

HAKKO 599B  
 No water is required.

Thermal control function

- The temperature setting can be locked with the control card.
- An alarm can be set to inform reaching the preset lower limit.
- The digital display makes it easier to offset the temperature.

Safe design

- ESD safe by design.
- Various kinds of information by a buzzer or display.

### Standard 84 types of tip variations

The standard 84 types of tips are available to suit various kinds of soldering work.

## New functions

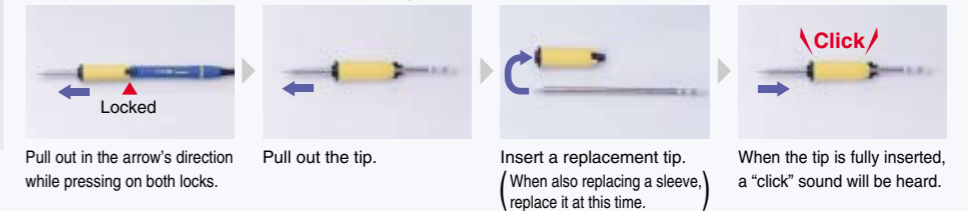
### Point 1



### Lock-type sleeve

The lock-type sleeve enables it to be firmly secured. When replacing a tip, a clicking sound shows that it is inserted fully.

#### < Replacement of tip and sleeve assembly >



### Sleeve assembly in 4-color

Yellow, blue, orange and green color sleeve assemblies are available. Workability increases if sleeves are changed according to the tip shape and job application.

- Sleeve assembly (Lock-type/antibacterial)
- Yellow : No. B3216
- Blue : No. B3218
- Orange : No. B3217
- Green : No. B3219



### Point 2

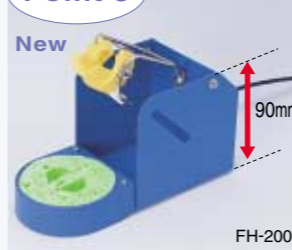


### Power-save function performance increased

The power-save function operates while being linked to the iron holder. After the iron is inserted into the iron holder, the sleep function\*1 activates for an arbitrarily-set time (0 to 29 min.) and the tip temperature will decrease to 200°C. After 30 minutes have elapsed, the automatic power-off function\*2 activates.

\*1 To use sleep function, it is necessary to set the desired time arbitrarily in advance.  
 \*2 In order to use the automatic power shut-off function, it is necessary to set it in advance.

### Point 3



### Solder-splashing prevention

A higher side plate of the iron holder prevents solder from splashing when placing the tip.

#### [ For customers using the former FX-951 unit ]

- In the former FX-951 station, FM-2028/lock-type sleeve can be used. (A new sleeve assembly cannot be used interchangeably.)
- The former FX-951 station cannot be connected to the new iron holder/FH-200.
- A new sleeve assembly is available for the FM-2028 soldering iron only.

## Specifications

### HAKKO FX-951 soldering station

Power consumption	75W
Temperature range	200 - 450°C
Temperature stability	±5°C

### Station

Output	24V
Dimensions	80(W) x 130(H) x 131(D)mm
Weight	1.2kg

### HAKKO FM-2028 soldering iron

Power consumption	70W
Tip to ground resistance	< 2
Tip to ground potential	< 2mV
Length of cord	1.2m
Total Length (w/o cord)	188mm with 2.4D tip
Weight (w/o cord)	30g with 2.4D tip

NOTE : The temperature were measured using the HAKKO 191 or FG-100 thermometer.  
 This product is protected against electrostatic discharge.

## Packing List

Station	1
Iron (FM-2028)	1
Power cord	1
Iron holder (FH-200)	1
Control card	1
Connecting cable	1
Heat resistant pad	1

\*Tip is an optional part.

The standard model for lead-free soldering

**HAKKO FX-951** ESD SAFE  
SOLDERING STATION

The standard model for lead-free soldering upgraded



Optional Tips

Unit : mm

T12-B SHAPE-B	T12-B2 SHAPE-0.5B	T12-B3 SHAPE-0.7B	T12-B4 SHAPE-0.4B	T12-BL SHAPE-BL	T12-BC1 SHAPE-1BC T12-BCF1 *
T12-BC2 SHAPE-2BC T12-BCF2 *	T12-BC3 SHAPE-3BC T12-BCF3 *	T12-C1 SHAPE-1C	T12-C4 SHAPE-4C T12-CF4 *	T12-D08 SHAPE-0.8D	T12-D12 SHAPE-1.2D
T12-D16 SHAPE-1.6D	T12-D24 SHAPE-2.4D	T12-D4 SHAPE-4D	T12-D52 SHAPE-5.2D	T12-DL08 SHAPE-0.8DL	T12-DL12 SHAPE-1.2DL
T12-DL32 SHAPE-3.2DL	T12-DL52 SHAPE-5.2DL	T12-I1 SHAPE-I	T12-IL SHAPE-IL	T12-ILS SHAPE-ILS	T12-J02 SHAPE-0.2J
T12-JL02 SHAPE-0.2JL	T12-JS02 SHAPE-0.2JS	T12-K SHAPE-K	T12-KF SHAPE-KF	T12-KL SHAPE-KL	T12-KR SHAPE-KR
T12-KU SHAPE-KU	T12-1201 QUAD 13.6 x 8.5	T12-1202 QUAD 10.3 x 10.3	T12-1203 QUAD 12.8 x 12.8	T12-1204 QUAD 17.9 x 17.9	T12-1205 QUAD 23.4 x 17.3
T12-1206 QUAD 22.5 x 16.5	T12-1207 QUAD 15.5 x 15.5	T12-1208 QUAD 15.8 x 15.8	T12-1209 QUAD 8.4 x 8.4	T12-1001 TUNNEL 5.1 x 4.6	T12-1002 TUNNEL 5.1 x 10.4
T12-1003 TUNNEL 9.5 x 18.3	T12-1004 TUNNEL 9.5 x 15.8	T12-1005 TUNNEL 9.5 x 13.2	T12-1006 TUNNEL 6.9 x 11.4	T12-1007 TUNNEL 7.9 x 18.8	T12-1008 TUNNEL 19.5 x 10.2
T12-1009 TUNNEL 13.4 x 20.5	T12-1010 TUNNEL 19.5 x 12	T12-1401 SPATULA 10.4	T12-1402 SPATULA 15.7	T12-1403 SPATULA 21.2	T12-1404 SPATULA 25
T12-1405 SPATULA 32	T12-1406 SPATULA 40	T12-BZ SHAPE-B(Z)	T12-B2Z SHAPE-0.5B(Z)	T12-BC1Z SHAPE-1BC(Z) T12-BCF1Z *	T12-BC2Z SHAPE-2BC(Z) T12-BCF2Z *
T12-BCM2 SHAPE-2BC Bevel with indent **	T12-BC3Z SHAPE-3BC(Z) T12-BCF3Z *	T12-BCM3 SHAPE-3BC Bevel with indent **	T12-C4Z SHAPE-4C(Z) T12-CF4Z *	T12-D12Z SHAPE-1.2D(Z)	T12-D16Z SHAPE-1.6D(Z)
T12-D24Z SHAPE-2.4D(Z)	T12-D4Z SHAPE-4D(Z)	T12-KFZ SHAPE-KF(Z)	T12-KRZ SHAPE-KR(Z)	T12-WB2 SHAPE-0.5WB	T12-WD08 SHAPE-0.8WD
T12-WD12 SHAPE-1.2WD	T12-WD16 SHAPE-1.6WD	T12-WD52 SHAPE-5.2WD	T12-W1 SHAPE-W1		

SHAPE B

SHAPE J

SHAPE K

SMD TYPE(SPATULA)

SHAPE BC

SHAPE C

SHAPE D

SHAPE I

SMD TYPE(QUAD)

SPECIAL APPLICATIONS TYPE

SHAPE E

SHAPE F

SHAPE G

SHAPE H

SHAPE L

SHAPE M

SHAPE N

SHAPE O

SHAPE P

SHAPE Q

SHAPE R

SHAPE S

SHAPE T

SHAPE U

SHAPE V

SHAPE W

SHAPE X

SHAPE Y

SHAPE Z

SMD TYPE(TUNNEL)

HEAVY DUTY TYPE

\* Tinned on the soldering surface only. \*\* The part numbers T12-BCM2 and T12-BCM3 are not available for sale or use in the U.S.A.

Due to continuing product improvement efforts, specifications and external appearance are subject to change without notice.  
Copyright Hakko Corporation. All right reserved.

CA00252BbBa001 Oct. 2006

**HAKKO**  
HAKKO CORPORATION  
OVERSEAS AFFILIATES

**HEAD OFFICE**  
4-5, SHIOKUSA 2-CHOME, NANIWA-KU, OSAKA, 556-0024 JAPAN  
TEL: +81-6-6561-3225 FAX: +81-6-6561-8466  
http://www.hakko.com E-mail: sales@hakko.com

**U.S.A.**  
AMERICAN HAKKO PRODUCTS, INC.  
28920 N. AVE. WILLIAMS VALENCIA, CA 91355, U.S.A.  
TEL: (661) 294-0090 FAX: (661) 294-0096  
Toll Free (800)88-HAKKO  
http://www.hakkousa.com

**HONG KONG**  
HAKKO DEVELOPMENT CO. LTD.  
ROOM 1504, EASTERN HARBOUR CENTRE,  
28 HOI CHAK STREET, QUARRY BAY, HONG KONG.  
TEL: 2811-5588 FAX: 2590-0217  
http://www.hakko.com.hk  
E-mail: info@hakko.com.hk

**SINGAPORE**  
HAKKO PRODUCTS PTE., LTD.  
1, GENTING LINK #02-04, PERFECT INDUSTRIAL  
BUILDING, SINGAPORE 349518  
TEL: 6748-2277 FAX: 6744-0033  
http://www.hakko.com.sg  
E-mail: sales@hakko.com.sg

Please access to the following for the other Sales affiliates.  
http://www.hakko.com

**HAKKO**

## X-ON Electronics

Largest Supplier of Electrical and Electronic Components

*Click to view similar products for [hakko manufacturer](#):*

Other Similar products are found below :

[A1006](#) [FT8002-01](#) [PTG-2T1G0008](#) [HFJ11-1G06ERL](#) [HFJ12-E2450ER-L11RL](#) [B3048](#) [FM203-15](#) [N1-L10](#) [A1014](#) [N1-20](#) [T12-D24](#) [T12-BCM2](#) [FM2023-04](#) [FT8003](#) [G3-1601](#) [T31-01JS02](#) [T33-BC4](#) [T33-BC5](#) [T33-D24](#) [950-CK](#) [A1013](#) [A1067](#) [A1187B](#) [A1379](#) [B1309](#) [B1787](#) [C1392B](#) [A1553](#) [A1554](#) [FX300-03](#) [FT300](#) [918-T-1.6D/P](#) [C1148B/P](#) [111-SA](#) [T15-1006](#) [T15-1202](#) [N3-23](#) [B5045](#) [B5046](#) [N60-03](#) [N60-05](#) [N60-07](#) [N60-09](#) [T12-1612](#) [C1148B](#) [HFJ11-1G11E-L11RL](#) [TG41-2006NRLTR](#) [T30-KU](#) [T12-BC2](#) [B3474](#)