

CONTACT ARRANGEMENT

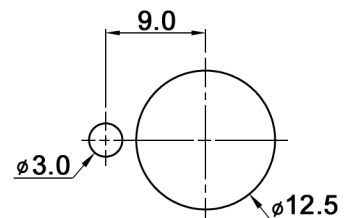
code for x	function	connected terminals
D	ON - ON	1-2, 4-5, 7-8 alternating with 2-3, 5-6, 8-9
F	ON - MOM	rest position: 1-2, 4-5, 7-8; pushed down: 2-3, 5-6, 8-9

RATING

y	contacts	all other conductive parts	rating DC	rating AC
empty	Ag (solid)	Brass, 10 µm Ag over 1.5 µm Ni	6V / 6 A 12V / 5 A 30 V / 4 A	125 V / 6 A 250 V / 3 A
B	Brass, 2 µm Au over 3 µm Ni	Brass, 2 µm Au over 3 µm Ni	max. 0.4 VA, max. 20 V AC/DC	
G	Ag (solid), 2 µm Au over 3 µm Ni	Brass, 2 µm Au over 3 µm Ni	6V / 6 A 12V / 5 A 30 V / 4 A 150 V / 10 mA	125 V / 6 A 250 V / 3 A

Min. rating for silver contacts: 10mA, 5V AC/DC
 Min. rating for gold plated contacts: 1µA, 20mV AC/DC

PANEL MOUNTING



Specifications

Contact resistance: 20mOhm max.
 Insulation resistance: 1000MOhm min. at 500V DC
 Dielectric strength: 1500V RMS
 Operating temperature: -30°C to +85°C
 Mechanical life: 30 000 make-and-break cycles
 Material: Slide: PMC
 Contact / terminal: brass, GC2010, silver plated
 Pin: brass
 Case: DAP
 Housing: steel, nickel plated
 Bushing: copper alloy, C3604BD, nickel plated
 Plunger: copper alloy, C3604BD, chrome plated
 Included accessories: 2 pcs. nut 15/32-32, nickel plated, 14mm wrench size
 1 pc. tooth washer
 1 pc. locking washer

Compliance: RohS II (2011/65/EU)

Tolerances: 0.00: ±0.25mm 0.0: ±0.40mm	Date	Name	MPG 306 x y	30 28 24	Page
	03/13	dr			1/1
Contact arrangement	07/15	dr	knitter-switch	30 28 24	
Modifications	Date	Name			

X-ON Electronics

Largest Supplier of Electrical and Electronic Components

Click to view similar products for [Pushbutton Switches](#) category:

Click to view products by [Knitter-Switch](#) manufacturer:

Other Similar products are found below :

[LW1L-M1C10V-A](#) [LW2L-A1C20M-GD](#) [LW2L-M1C20M-A](#) [60324L](#) [M7E-HRN2](#) [67021K512](#) [67081K512X](#) [701PB580](#) [719-5504-000](#)
[MDPSSGLFS](#) [810KSV30B](#) [MML23KA3AC05K-001](#) [MML23KW3AA01W](#) [8418K2](#) [8646AB6X718UL](#) [8646ABUL](#) [FSDWH](#) [9001KXRK](#)
[9001T8BK](#) [9533CD4+U574+U4922](#) [1203MRA](#) [A22EM01S](#) [A595](#) [1202A6](#) [12037A2ULCSA](#) [1203A2UL](#) [ABD122N-B](#) [1211390004](#)
[ABN111-Y](#) [1211500044](#) [1211580012](#) [1212MRA](#) [1232A6NF](#) [RA3CSH6A](#) [1241.1183.7047](#) [1241.2511](#) [1241.3428](#) [1223A2ULCSA](#)
[1223MRA](#) [1232AX2119](#) [1241.1183.8000](#) [1241.1183.8029](#) [1241.2506](#) [1241.2606](#) [12MA6](#) [1301940184](#) [RELBARF6X10\(PLASTIC\)](#)
[13435AG](#) [13440AD2G25X822+U4546](#) [13445A4GX768](#)