

32.768kHz CMOS CERAMIC SMD CRYSTAL OSCILLATOR



3.2 x 2.5 x 0.9 mm

ASHEK SERIES



ESD Sensitive



RoHS/RoHS II compliant

MSL = N/A: Not Applicable

FEATURES:

- Ultra low uA current consumption with CMOS output
- Miniature ceramic package (3.2 x 2.5 x 0.9mm)
- Start up time less than 1 sec with supply voltage 1.5 to 5.0V
- Tri-state function
- Pb-free reflow capable

APPLICATIONS:

- General purpose clock generator for digital systems
- Clock drivers for Real Time Clocks
- Timekeeping in network servers and computers
- Electricity, gas and water metering
- Portable field communication
- Mobile phone
- Clock & Data recovery
- CCD clock for VTR camera
- Computers and peripherals
- Portable MP3 players & games

STANDARD SPECIFICATIONS:

Parameters	Minimum	Typical	Maximum	Units	Notes
Frequency	32.768			kHz	
Operating Temperature	-20		+70	°C	See options
Storage Temperature	-55		+125	°C	
Frequency Tolerance @ +25°C	-15	+5	+25	ppm	
Frequency Stability	-120		+10	ppm	- 20 to + 70 °C; referenced to frequency measured @ +25°C See options
Supply Voltage (V _{dd})	3.135	3.3	3.465	V	Standard
	4.75	5.0	5.25		Option 2
	2.66	2.8	2.94		Option 3
	1.71	1.8	1.89		Option 4
	1.425	1.5	1.575		Option 5
Supply Current (I _{dd})		0.9	1.5	uA	no load, V _{dd} =+ 3.3V
		1.8	2.5		no load, V _{dd} =+ 5.0V
		0.8	1.5		no load, V _{dd} =+ 2.8V
		0.6	1.5		no load, V _{dd} =+ 1.8V
		0.5	1.5		no load, V _{dd} =+ 1.5V
Output Load			15	pF	CMOS
Output Voltage	V _{OH}	V _{dd} -0.4		V	
	V _{OL}		0.4		
Tri-state function	"1" (VIH≥0.8*V _{dd} or open) : Oscillation "0" (VIH<0.2*V _{dd}) : Hi Z				
Aging	-5.0		+5.0	ppm	@+25°C First year
Symmetry @1/2V _{dd}	40	50	60	%	Standard
Start-up Time			1	s	0.9*V _{dd} @ +25°C
Rise/Fall Time (T _r /T _f)			200	ns	

32.768kHz CMOS CERAMIC SMD CRYSTAL OSCILLATOR



3.2 x 2.5 x 0.9 mm

ASHEK SERIES



RoHS/RoHS II compliant

OPTIONS & PART IDENTIFICATION:

(Left blank if standard)

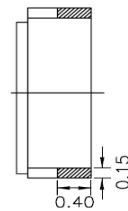
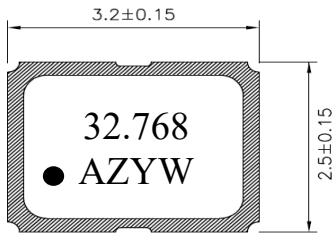
ASHEK -32.768kHz - -

Supply Voltage	
Blank:	3.3V
2:	5.0V
3:	2.8V
4:	1.8V
5:	1.5V

Frequency Temp Characteristics / Stability	
Blank:	-20°C to +70°C / -120 to +10 ppm
L:	-40°C to +85°C / -200 to +10 ppm

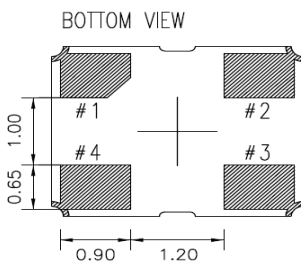
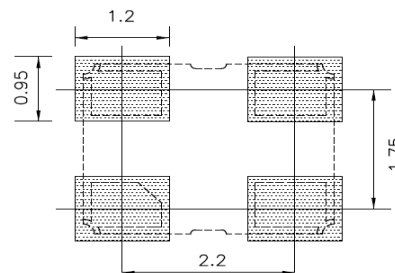
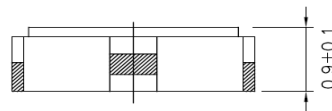
Packaging	
Blank:	Bulk
T:	Tape and Reel (1kpcs)
T3:	Tape and Reel (3kpcs)

OUTLINE DIMENSION:



PIN #	Name
1	Tri-state or NC
2	GND
3	Output
4	Vdd

Note: Recommend using an approximately 0.01uF bypass capacitor between PIN 2 and 4.



Dimensions: mm

32.768kHz CMOS CERAMIC SMD CRYSTAL OSCILLATOR

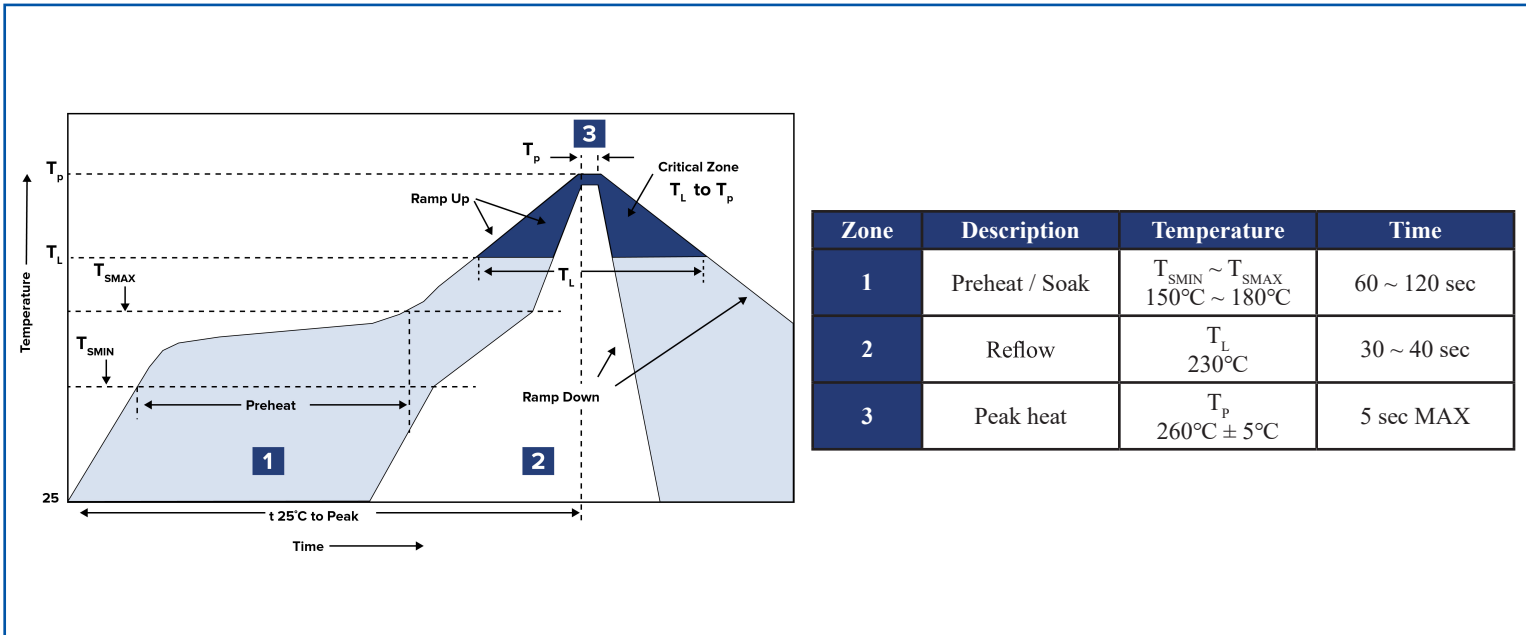


3.2 x 2.5 x 0.9 mm

ASHEK SERIES



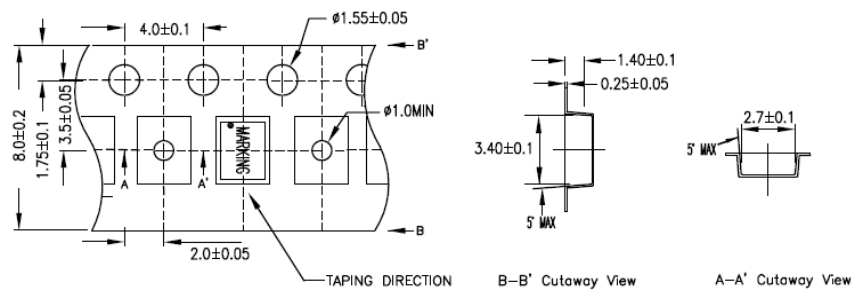
REFLOW PROFILE:



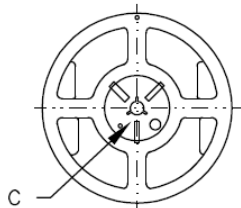
TAPE & REEL:

T= Tape and reel (1,000pcs/reel)
T3= Tape and reel (3,000pcs/reel)

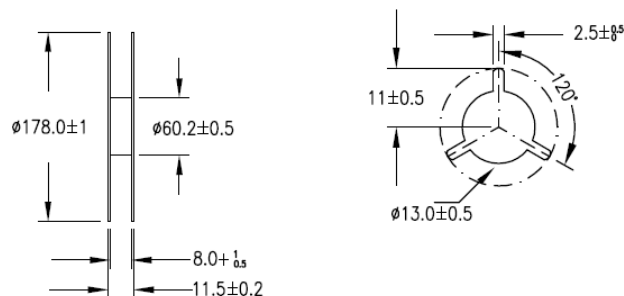
1. CARRIER TYPE



2. REEL



C. ENLARGE



Dimensions: mm



5101 Hidden Creek Lane Spicewood TX 78669
Phone: 512-371-6159 | Fax: 512-351-8858
For terms and conditions of sale please visit:
www.abracon.com

REVISED: 12.05.2018

ABRACON IS
ISO9001-2015
CERTIFIED

X-ON Electronics

Largest Supplier of Electrical and Electronic Components

Click to view similar products for [Standard Clock Oscillators](#) category:

Click to view products by [ABRACON](#) manufacturer:

Other Similar products are found below :

[EP1400SJTSC-125.000M](#) [601137](#) [601252](#) [CSX750FBC-24.000M-UT](#) [CSX750FBC-33.333M-UT](#) [CSX750FCC-3.6864M-UT](#) [F335-12](#) [F335-25](#) [F535L-50](#) [DSC506-03FM2](#) [ASA-20.000MHZ-L-T](#) [ASA-25.000MHZ-L-T](#) [ASA-27.000MHZ-L-T](#) [ASV-20.000MHZ-LR-T](#) [ECS-2018-160-BN-TR](#) [EL13C7-H2F-125.00M](#) [MXO45HS-2C-66.6666MHZ](#) [NBXDBB017LN1TAG](#) [NBXHBA019LN1TAG](#) [SiT1602BI-22-33E-50.000000E](#) [SIT8003AC-11-33S-2.04800X](#) [SiT8256AC-23-33E-156.250000X](#) [SIT8918AA-11-33S-50.000000G](#) [SM4420TEV-40.0M-T1K](#) [SMA4306-TL-H](#) [F335-24](#) [F335-40](#) [F335-50](#) [F535L-10](#) [F535L-12](#) [F535L-16](#) [F535L-24](#) [F535L-27](#) [F535L-48](#) [CSX750FBC-20.000M-UT](#) [CSX-750FBC33333000T](#) [CSX750FBC-4.000M-UT](#) [CSX750FBC-7.3728M-UT](#) [CSX750FBC-8.000M-UT](#) [CSX-750FCC14745600T](#) [CSX750FCC-16.000M-UT](#) [CSX-750FCC40000000T](#) [CSX750FCC-4.000M-UT](#) [ASA-22.000MHZ-L-T](#) [ASA2-26.000MHZ-L-T](#) [ASA-40.000MHZ-L-T](#) [ASA-48.000MHZ-L-T](#) [ASA-60.000MHZ-L-T](#) [ASF1-3.686MHZ-N-K-S](#) [XLH735025.000JU4I8](#)