

Drq. No.: 1059600496

Title: SPECIFICATION

Used On: 59600-496

DESCRIPTION: - Single Pole, High Voltage Form A, Proximity Device.
CONSTRUCTION: - Encapsulated in a Moulded Plastic Body.

CUSTOMER: -
CUSTOMER DRG. No.: -

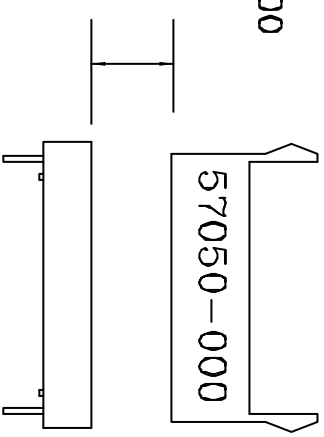
ELECTRICAL

Maximum Switched Current	0.5A
Maximum Switched Voltage	300Vdc
Maximum Switched Power	10W
Maximum Initial Contact Resistance	
Maximum Carry Current (inc. leadouts)	100m Ω
Minimum Insulation Resistance	1.5A
Min. Voltage Holdoff	10 ¹⁰ Ω
	450Vdc

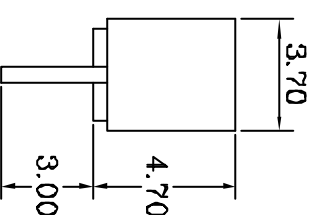
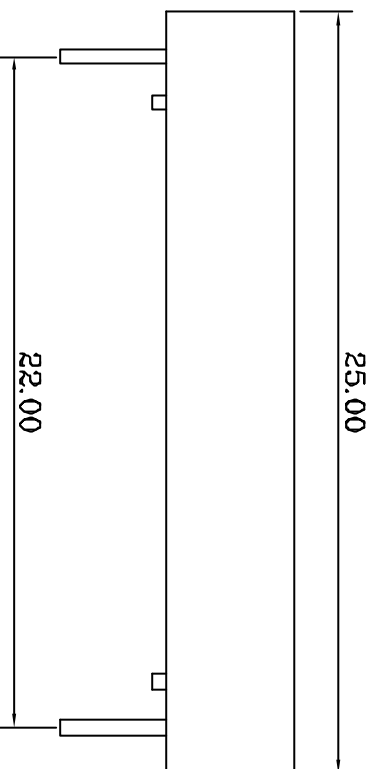
PHYSICAL

Body Material: -
Encapsulant: -
Leadouts: -
Operation
Actuator: -
Operate Distance: - > 4mm
Release Distance: - < 20mm

Celanex - Black
Urethane - Black
ø0.50mm, Tinned



FOR CONDITIONS OF TESTING REFER TO DRG. No. 30.003
GENERAL TOLERANCES ±0.13mm UNLESS STATED OTHERWISE



MOD. No.	DATE	ISSUE No.	MOD. No.	DATE	ISSUE No.

© HAMILIN ELECTRONICS (EUROPE) LTD. 2002

Drawn *PA*

Doc. Ret. Code: D

Issued

THIS DESIGN AND PRINT IS COPYRIGHT AND IS THE PROPERTY OF HEBEL. IT MUST NOT BE COPIED OR PERMITTED TO BE COPIED, NOR MUST ITS CONTENTS BE DIVULGED TO ANY THIRD PARTY WITHOUT PRIOR WRITTEN PERMISSION FROM THE COMPANY.

Sheet 1 of 1 Sheet(s)

Dimensions: mm Scale: 4 : 1

Date: 09.12.02 File: A

Drq. No.: 1059600496

X-ON Electronics

Largest Supplier of Electrical and Electronic Components

Click to view similar products for [hamlin](#) manufacturer:

Other Similar products are found below :

[HE722A0600](#) [HE722A2410](#) [RA31232051-02](#) [RA30441051](#) [RA30451121](#) [RA31171051](#) [OAC15-A](#) [RA30312121](#) [59025-2-T-02-F](#)
[BBW1A05B30](#) [VP02A12A10](#) [VP01A24A10](#) [HE721C0510](#) [57065-000](#) [RA30692241](#) [59145-030](#) [HE722A1210](#) [HE721A2410](#) [HE722A0610](#)
[59135-4-U-03-A](#) [HE3321C0500](#) [59630-1-T-02-F](#) [RA30201051](#) [MARR-5](#) [59140-1-T-02-F](#) [59040-3-S-02-A](#) [RA30461061-02](#) [HE721E2400](#)
[CM-1](#) [57070-000](#) [625](#) [HE3621A0540](#) [RA30521051](#) [HE721A1210](#) [55100-3H-04-A](#) [RA31551241](#) [ODC15](#) [55310-00-02-A](#) [55300-00-02-C](#)
[MDCG-4 32-38](#) [MDRR-DT 15-30 U](#) [59045-010](#) [RA30521241](#) [DRS-DTH-45-50](#) [RA30231241](#) [59022-1-T-02-A](#) [RA30651051](#) [VPS1A05A10](#)
[59145-020](#) [RA30551051](#)