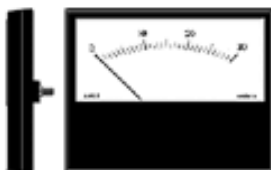


- Meters Overview
- Product Categories**
- Customised Products
- Services & Support
- News
- Online Enquiry Form**

product family

Meters categories > [Short Scale Meters](#) > **Acclaim - Stock Range**



Acclaim - Stock Range

[more info](#)   

- 3 sizes stocked in 3 sensitivities
- Flat "no barrel" design
- Slide in scale plates
- Modular design for front or rear of panel mounting
- Optional cover and picture frame bezel


Attractive, slim style "flat" meters incorporating an ultra thin sandwich type movement. The high performance 1.5% taut band moving coil movement is, self shielding, very rugged, has excellent linearity with efficient damping and can easily be adjusted to centre or right hand zero.

Normal surface mounting using the two insulated input terminals saves space behind the panel and eliminates the need for complex barrel cut-outs. Meters can also replace conventional barrel meters using the four corner screw fixings provided. An optional black cover is available for surface mounting the meter.

Alternatively, the Acclaim range can be rear mounted via a simple window cut out in the panel or using the optional picture frame bezel.

Part Number	Case Size (mm)	Scale Length	Description
AM25UA100	78 X 60	45mm	0-100uA DC
AM25MA1	78 x 60	45mm	0-1mA DC
AM25MV75	78 x 60	45mm	0-75mV DC
CAM25	81.5 x 63.5	N/A	Black cover AM25
BAM25	81.2 x 36.2	N/A	Black bezel AM25
SAM25/0	N/A	N/A	Scale AM25 Blank
SAM25/10	N/A	N/A	Scale AM25 0-10
SAM25/30	N/A	N/A	Scale AM25 0-30
SAM25/100	N/A	N/A	Scale AM25 0-100
AM35UA100	95.5 x 75	65mm	0-100uA DC
AM35MA1	95.5 x 75	65mm	0-1mA DC
AM35MV75	95.5 x 75	65mm	0-75mV DC
CAM35	99.5 x 78.5	N/A	Black cover AM35
BAM35	99.2 x 49.2	N/A	Black bezel AM35
SAM35/0	N/A	N/A	Scale AM35 Blank
SAM35/10	N/A	N/A	Scale AM35 0-10
SAM35/30	N/A	N/A	Scale AM35 0-30
SAM35/100	N/A	N/A	Scale AM35 0-100
AM45UA100	132 x 102	95mm	0-100uA DC
AM45MA1	132 x 102	95mm	0-1mA DC
AM45MV75	132 x 102	95mm	0-75mV DC
CAM45	135.5 x 105.5	N/A	Black cover AM45
BAM45	135.2 x 68.2	N/A	Black Bezel AM45
SAM45/0	N/A	N/A	Scale AM45 Blank
SAM45/10	N/A	N/A	Scale AM45 0-10
SAM45/30	N/A	N/A	Scale AM45 0-30
SAM45/100	N/A	N/A	Scale AM45 0-100

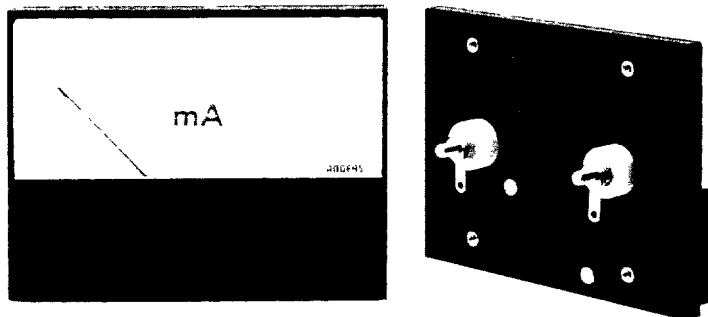
 [Online Enquiry Form](#)

 [Contact our meters division](#)

that provides outstanding ruggedness (will withstand 200G shock), excellent linearity (1.5%) with good damping and low overshoot.

Available in the choice of attractive case styles detailed below.

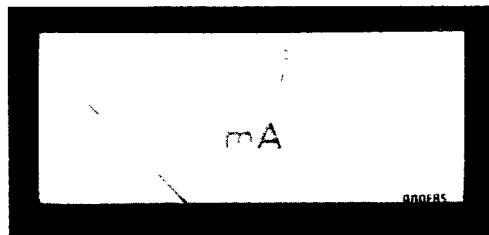
ACCLAIM Range **NEW**



Distinctive 'flat' meters having a slim appearance barrel-less case design. Features include removable scale plates, optional bezels for back-of-panel mounting and the 'sandwich' type taut-band moving coil movement — having the advantages described above. Lower section of cover and frame are matt black. Normally surface mounted by the two insulated input terminals, but can also replace conventional barrel meters by using the four screw fixings provided.

Model	Flange	Scale Length	Class
AM25	78 x 60	45	1.5
AM35	96 x 75	65	1.5
AM45	132 x 103	95	1.5

For detailed dimensions see Page 22.



With Bezel. Black moulded bezels for compact back-of-panel mounting with minimum space requirement inside equipment.

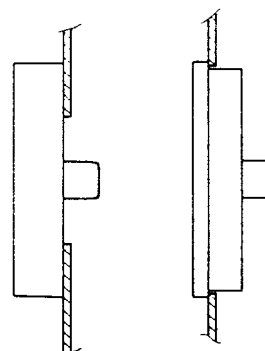
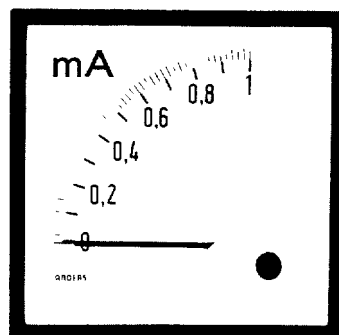
Model	Bezel Flange	Scale Length	Class
AM25B	85 x 40	45	1.5
AM35B	103 x 50	65	1.5
AM45B	140 x 66	95	1.5

Attractive slim style 'flat' meters using the 'sandwich' type taut-band moving coil movement and having the features described above. Transparent acrylic cover provides wide-angle shadow-free viewing of the flattened arc scale. Lower section of the cover and base moulding are light grey. Normally surface mounted by the two insulated input terminals, but can also replace conventional barrel meters by using the four screw fixings provided.

Model	Flange	Scale Length	Class
KF48A	49 x 49	34	2
KF66A	68 x 59	46	2
KF86A	88 x 74	63	2

For detailed dimensions see Page 22.

PRODIN Range **NEW**



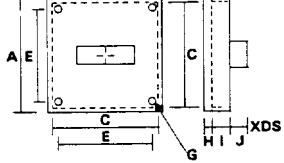
PDS version

XDS version

Two types of 'flat' meters having the same flange size as the European standard DINO range (DIN43700) and using the 'sandwich' type taut-band moving coil movement described above. The **PDS** version is designed to be surface mounted but has a greater bezel projection (20mm) to closely match other process control devices such as timers and temperature controllers. The **XDS** version has a slim bezel (6.5mm) and shallow body that fits the standard square cut-out, to suit applications in portable or bench instrument designs where DINO meters would be too deep. Both versions feature removable scale plates for user convenience.

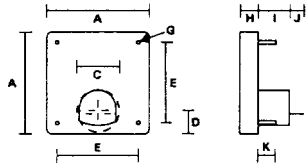
Model	Flange	Barrel	Scale Length	Class
PDS96	96 x 96	—	90	1.5
XDS96	96 x 96	91 x 91	90	1.5

Dimensional detailed dimensions see Page 22.



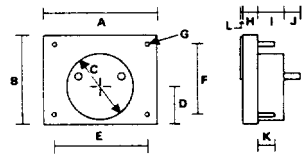
PRO DIN

PDS96	96x96	—	—	*	84x84	—	2 x M3	20	—	18	—	—
XDS96	96x96	—	91x91	*	84x84	—	2 Brackets	6.5	13.5	18	—	—



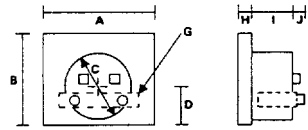
ECONOMY

38	43x43	—	38dia	*	32x32	—	4 studs 2.3dia	10	20	6	13	—
52X	61x61	—	25dia	17	48x48	—	4 studs 3dia	10.5	19	10	10	—



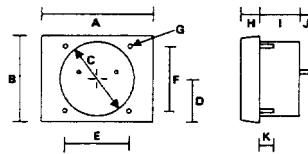
KESTREL

KM48	48	42	38dia	*	32	32	4 studs 3 dia	9	22	6.5	12	1.5
KM66	66	60	55dia	*	48	48	4 studs 3 dia	11.5	24	15	15	2
KM86	86	78	69dia	*	57	57	4 studs 3 dia	13.5	24	15	15	2
KM106	106	83	61dia	35.5	88.5	65.7	4 studs 3 dia	13.5	24	15	15	2.5
KM118	118	106	69dia	46.5	101.5	90.5	4 studs 3 dia	13.5	24	15	15	3
KM152	152	110	69dia	39	133	95.3	4 studs 3.5 dia	13.5	24	15	15	3.5
KM178	178	128	69dia	42	149	89	4 studs 3.5 dia	14	24	15	15	4



PORTLAND

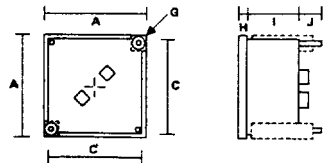
Z1	70	60	55dia	30	—	—	U-Bracket	12	33	15	—	—
Z2	90	75	55dia	30	—	—	U-Bracket	12	33	15	—	—
Z3	125	100	55dia	30	—	—	U-Bracket	12	33	15	—	—



REGAL

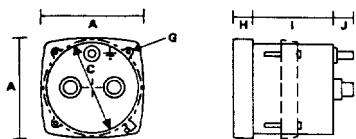
R45	69	53	45dia	25	48	36.5	4 studs 3dia	13	24	15	10	—
R55T	87	63	55dia	*	48	48	4 studs 3dia	14	30	15	10	—
R65T	110	77	65dia	*	57	57	4 studs 3dia	14	30	15	10	—

SHORT/LONG SCALE METERS



DINO

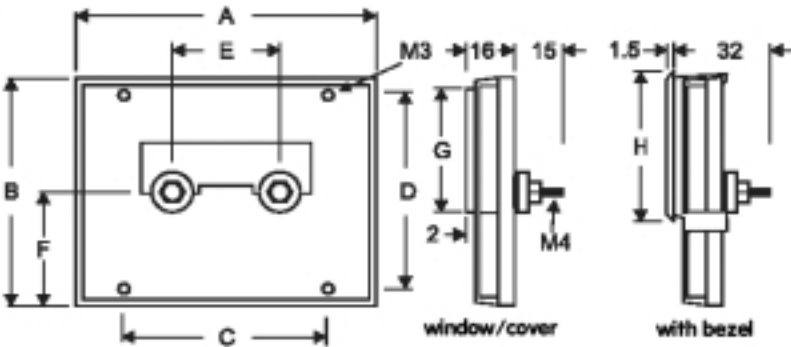
DS48	48x48	—	44x44	—	—	—	2 Brackets	5.5	37	15	—	—
DS72	72x72	—	66.5x66.5	—	—	—	2 Brackets	5.5	36	15	—	—
DS96	96x96	—	91x91	—	—	—	2 Brackets	5.5	40	15	—	—
DS144	144x144	—	137x137	—	—	—	2 Brackets	5.5	54	15	—	—
DL48	48x48	—	44x44	—	—	—	2 Brackets	5.5	49	15	—	—
DL72	72x72	—	66.5x66.5	—	—	—	2 Brackets	5.5	MI 76	15	—	—
									MC 49			
DL96	96x96	—	91x91	—	—	—	2 Brackets	5.5	MI 80	15	—	—
									MC 53			
DL144	144x144	—	137x137	—	—	—	2 Brackets	5.5	MI 78	15	—	—
									MC 54			
DL192	192x192	—	187x187	—	—	—	2 Brackets	8	73	—	—	—



TRENT/STAFFORD

1E/1ES	59x59	—	51dia	—	—	—	Clamp	10	46	14	—	—
2E/2ES	82x82	—	64dia	—	—	—	Clamp	10	46	14	—	—
SE/SES	95x95	—	64dia	—	—	—	Clamp	13	43	14	—	—
3E	115x115	—	101dia	—	—	—	Clamp	12	MI 69	31	—	—
									MC 86			
4E	137x137	—	122dia	—	—	—	Clamp	12	86	31	—	—
6E	178x178	—	163dia	—	—	—	Clamp	12	86	31	—	—

Dimensions



To surface mount, drill 2 x 8mm holes for terminals (and fixing) with centres at dimension E, F and 4 x 3.5mm holes with centres at dimensions C, D (optional).

	Window		Cover								Cut outs	
	A	B	A	B	C	D	E	F	G	H	Win	Bez
AM25	78	60	81.5	63.5	48	48	50	36	71.5	81.2	81.5	79.5
									x	x	x	x
AM35	95.5	75	99.5	78.5	57	57	50	41	89.5	99.2	99.5	97.4
									x	x	x	x
AM45	132	102	135.5	105.5	100	90	50	56	126	135.2	135.5	133.4
									x	x	x	x
									59	68.2	68.5	65.2

X-ON Electronics

Largest Supplier of Electrical and Electronic Components

Click to view similar products for [anderson power](#) manufacturer:

Other Similar products are found below :

[Anderson Power](#)