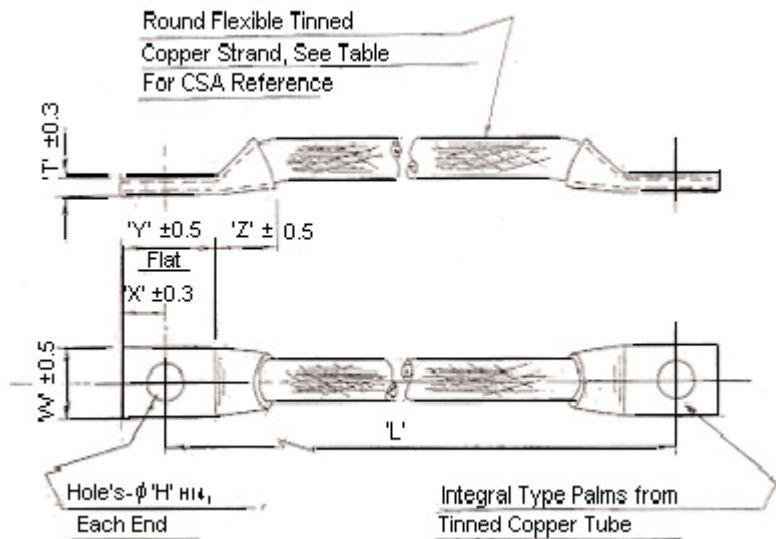


Earth Bonding Straps



Feature:

- Circular tinned copper braid leads. Both ends fitted with integral lug terminations. Suitable for a wide range of earthing applications for equipment housings and enclosures etc



Dimensions : Millimetres

Specification Table

Length ('L')	Conductor CSA (mm ²)	Stud Size Reference	Hole Reference (ØH) H14	Terminal Dimensions					Current Rating (A)	Part Number
				Lug Width ('W' ±0.5)	Lug Thickness ('T' ±0.3)	'X' ±0.3	'Y' ±0.5	'Z' ±0.5		
150	10	M5	5.2	14.5	2	6.5	17	7	85	59990251
250	15	M6	6.4	15.5	2.2	8.5	18	12	120	59990252
400	25	M8	8.3	16.5	2.8	9	20	9	180	59990253

Dimensions : Millimetres

Important Notice : This data sheet and its contents (the "Information") belong to the members of the Premier Farnell group of companies (the "Group") or are licensed to it. No licence is granted for the use of it other than for information purposes in connection with the products to which it relates. No licence of any intellectual property rights is granted. The Information is subject to change without notice and replaces all data sheets previously supplied. The Information supplied is believed to be accurate but the Group assumes no responsibility for its accuracy or completeness, any error in or omission from it or for any use made of it. Users of this data sheet should check for themselves the Information and the suitability of the products for their purpose and not make any assumptions based on information included or omitted. Liability for loss or damage resulting from any reliance on the Information or use of it (including liability resulting from negligence or where the Group was aware of the possibility of such loss or damage arising) is excluded. This will not operate to limit or restrict the Group's liability for death or personal injury resulting from its negligence. Pro-POWER is the registered trademark of the Group. © Premier Farnell plc 2012.

X-ON Electronics

Authorized Distributor

Click to view similar products for [Pro Power manufacturer](#).

Other Similar products are found below :

[PPCY4C075100M](#) [PPCY3C10050M](#) [PPC217](#) [PP001328](#) [PP001316](#) [PP001109](#) [PP001088](#)

[PP000940](#) [PP030](#) [PP000909](#) [PP001326](#) [PP001308](#) [PP000877](#) [PP000868](#) [PP000704](#)

[PP001163](#) [PP001156](#) [PP001085](#) [PP000510](#) [PP001076](#) [PP000944](#) [PP000914](#) [PP000407](#)

[PP000386](#) [PP000870](#)